



Texas Crop Progress and Condition

Southern Plains Regional Field Office
Post Office Box 70 Austin, Texas 78767
(800) 626-3142 · FAX (855) 270-2725 · www.nass.usda.gov/tx

Issue: TX-CW3316

Weekly Summary for Aug 22 - Aug 28

Released: August 29, 2016

Scattered showers were received around the state last week. Areas of the Upper Coast and the Trans-Pecos saw the greatest amount of precipitation, with some areas recording as much as 8 to 10 inches. The High Plains, Southeast Texas, and the Upper Coast experienced between 2 to 4 inches of rainfall. Portions of the Cross Timbers and the Coastal Bend received little or no precipitation.

Small Grains: Field preparations for small grains were underway in many areas following much-needed rain showers. In South Texas, tillage work occurred in preparation for winter oats.

Stage	Crop Progress			
	Percent of Acreage			
	Current	Previous Week	Previous Year	5 Year Average
Corn				
Dough	100	96	89	91
Dented	74	70	68	77
Mature	65	57	56	64
Harvested	56	47	49	53
Cotton				
Setting Bolls	95	92	86	92
Bolls Opening	22	17	16	22
Harvested	6	4	2	7
Rice				
Harvested	82	70	69	72
Sorghum				
Headed	94	88	95	93
Coloring	78	76	74	78
Mature	74	68	64	71
Harvested	47	46	48	58
Soybeans				
Setting Pods	88	80	91	88
Dropping Leaves	43	39	46	50
Harvested	17	10	14	20
Sunflowers				
Harvested	22	20	38	26

Row Crops: Corn was tasseling in areas of the Northern High Plains and harvest neared completion in the Blacklands. Recent rainfall delayed corn and sorghum harvest in areas of South Central Texas and the Blacklands. In the Southern Low Plains, sorghum harvest continued. Peanut conditions were rated 76 percent fair to good across the state. Soybean harvest was up 3 points from the previous year but down 3 from normal. Rice harvest neared completion in areas of South Central Texas, while producers in the Upper Coast experienced delays due to scattered showers. In the High Plains, dry land cotton conditions were aided by rainfall and cooler temperatures. Cotton harvest was slowed in areas of the Coastal Bend and the Upper Coast. Cotton harvest continued in the southern part of the state.

Fruit, Vegetable and Specialty Crops: In the Lower Valley, preparation for fall vegetable planting resumed. Pecan nut development progressed in South Texas.

Livestock, Range, and Pasture: Livestock were in good condition throughout most of the state, and supplemental feeding continued in areas of the Lower Valley. Forage production progressed in areas of the Blacklands and stock tanks in areas of the Edwards Plateau were still full. Range and pasture improved in the Southern Low Plains, South Texas, and the Edwards Plateau due to recent rainfall.

Crop Condition

Crop	Percent of Acreage					Index ¹	
	Excellent	Good	Fair	Poor	Very Poor	2016	2015
Corn	11	45	31	11	2	74	75
Cotton	7	33	39	16	5	65	68
Peanuts	16	41	35	7	1	77	80
Rice	13	55	25	4	3	80	75
Sorghum	16	41	34	7	2	77	80
Soybeans	6	38	49	5	2	72	64
Range and Pasture	12	41	33	10	4	--	--

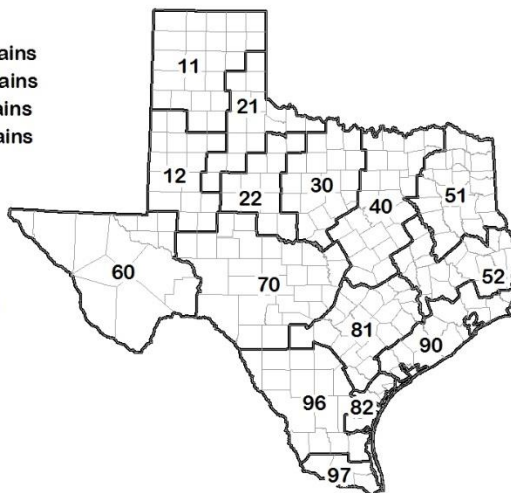
¹ The formula for the condition index is $I = (5V + 25P + 60F + 90G + 110E)/100$ where I = crop condition index and V, P, F, G, E = percentage of crop rated very poor, poor, fair, good, excellent.

Soil Moisture and Days Suitable by District

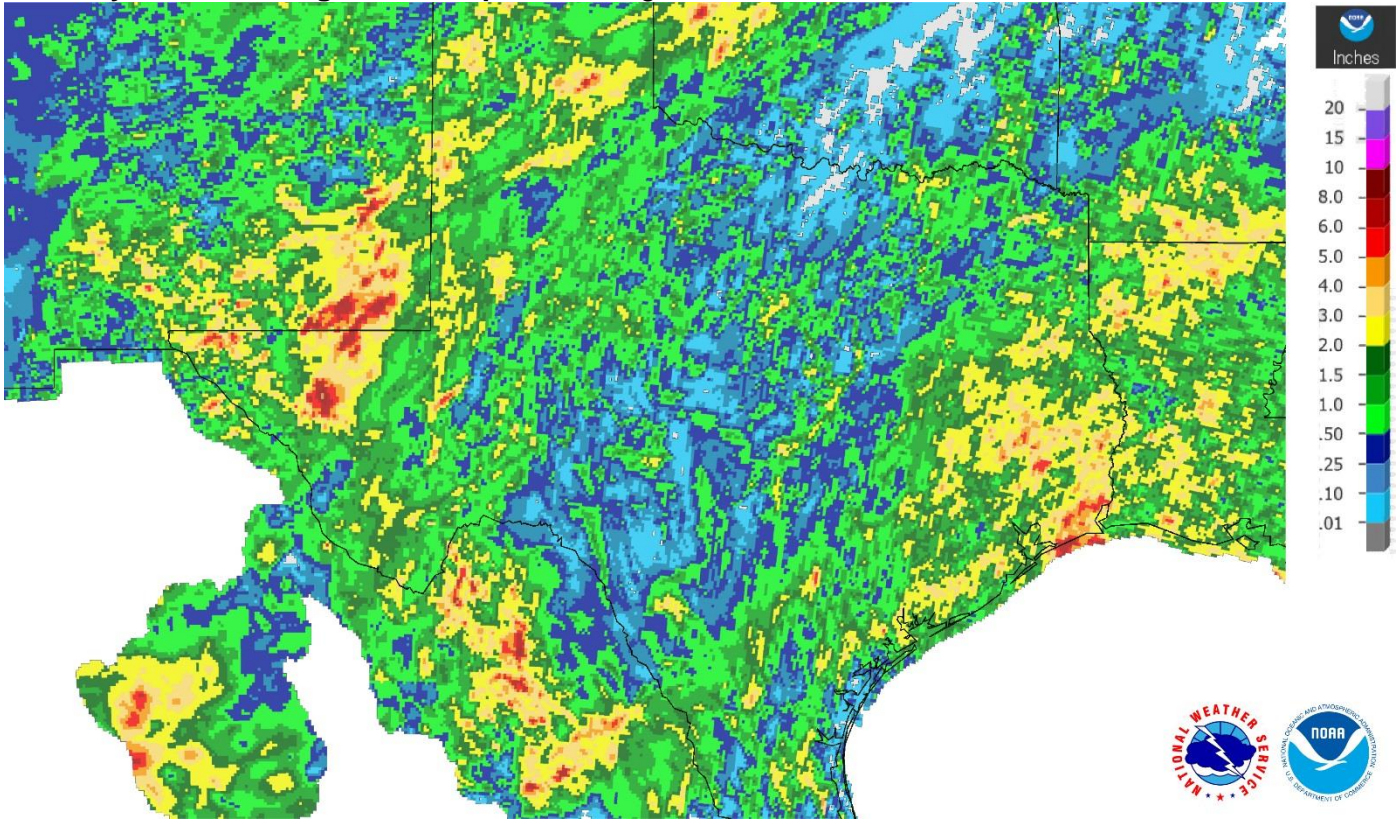
District	Topsoil Moisture Condition by District				Subsoil Moisture Condition by District				Days Suitable for Fieldwork
	Percentage of Acreage				Percentage of Acreage				
	Very Short	Short	Adequate	Surplus	Very Short	Short	Adequate	Surplus	
11	20	30	48	2	20	36	43	1	5.1
12	5	34	57	4	4	43	51	2	5.7
21	4	42	48	6	4	32	61	3	4.9
22	13	30	51	6	16	45	33	6	4.9
30	10	20	67	3	10	32	58	0	5.6
40	1	9	71	19	0	7	73	20	3.9
51	2	13	68	17	4	9	72	15	5.1
52	1	6	60	33	2	5	67	26	5.3
60	19	12	68	1	21	14	65	0	6.4
70	9	18	59	14	9	12	69	10	5.5
81	1	7	70	22	1	8	73	18	4.2
82	19	32	47	2	5	42	51	2	4.4
90	1	1	38	60	2	4	52	42	2.4
96	0	4	95	1	1	9	90	0	5.4
97	26	64	10	0	26	63	11	0	7.0
State	9	24	56	11	9	28	55	8	5.0

Texas Agricultural Districts

- 11 Northern High Plains
- 12 Southern High Plains
- 21 Northern Low Plains
- 22 Southern Low Plains
- 30 Cross Timbers
- 40 Blacklands
- 51 North East
- 52 South East
- 60 Trans-Pecos
- 70 Edwards Plateau
- 81 South Central
- 82 Coaster Bend
- 90 Upper Coast
- 96 South
- 97 Lower Valley

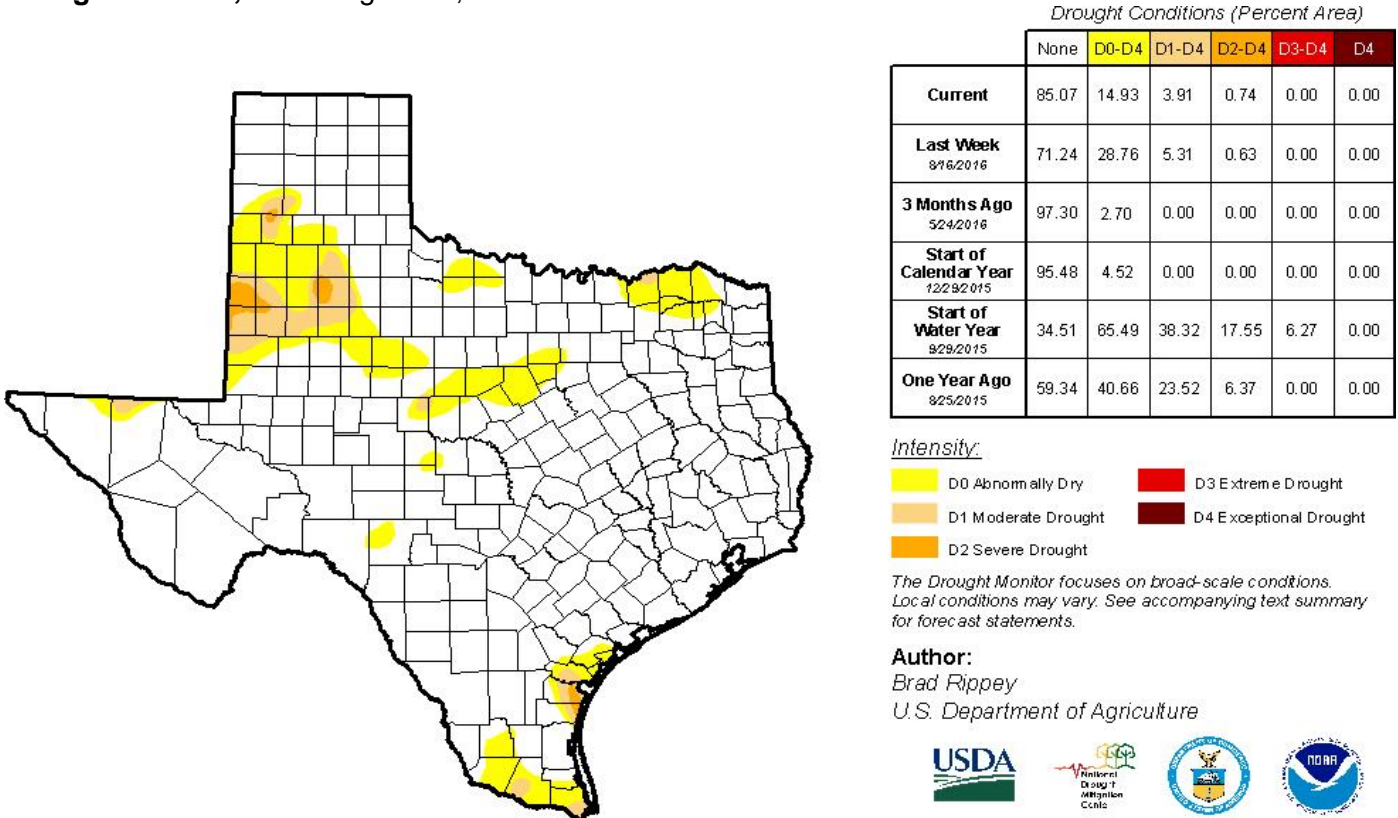


Seven Day Observed Regional Precipitation, August 28, 2016



Source: National Weather Service, www.nws.noaa.gov

Drought Monitor, Valid August 23, 2016



Source: National Drought Mitigation Center, a partnership with USDA, U.S. Department of Commerce/NOAA, <http://droughtmonitor.unl.edu>