



# Texas Crop Progress and Condition

Southern Plains Regional Field Office  
Post Office Box 70 Austin, Texas 78767  
(800) 626-3142 · FAX (855) 270-2725 · www.nass.usda.gov/tx

**Issue: TX-CW3416      Weekly Summary for August 30-September 4      Released: September 6, 2016**

Scattered showers were received last week across the majority of the state. Areas of the High Plains and coastal regions observed between 2 to 8 inches of precipitation. Central, South, and East Texas experienced up to 2 inches of rainfall.

**Small Grains:** Ground preparations continued for fall wheat and oats seeding. Some producers in the High Plains experienced fieldwork delays due to recent rainfall. In areas of the Cross Timbers, wheat planting neared completion.

**Row Crops:** Cotton harvest continued from the Coastal Bend through the Lower Valley, while cotton harvest was delayed in areas of the Blacklands. Cotton maturity in the Plains continued to make good progress. Corn and sorghum harvest was delayed due to wet conditions in the Blacklands and South Central Texas. Sorghum harvest neared completion in the areas of the Southern Low Plains and the Cross Timbers. In South Texas, peanuts were being irrigated and producers were preparing for harvest.

**Fruit, Vegetable and Specialty Crops:** Fall vegetable planting was active in areas of the Lower Valley. Watermelon, cantaloupe, and onion harvest neared completion in South Texas. Pecans were progressing well in South Texas, while some orchards in South Central and Northeast Texas experienced stress and pecan scab.

**Livestock, Range and Pasture:** Pasture conditions improved with recent rainfall in the Coastal Bend and South Texas. Armyworms in pasture fields were an issue in areas of the Blacklands and Northeast Texas. Livestock were in good condition in most areas of the state and the majority of stock tanks were full.

## Crop Progress

Stage	Percent of Acreage			
	Current	Previous Week	Previous Year	5 Year Average
<b>Corn</b>				
Dented	82	74	73	82
Mature	66	65	57	66
Harvested	57	56	51	56
<b>Cotton</b>				
Bolls Opening	28	22	20	29
Harvested	7	6	5	9
<b>Rice</b>				
Harvested	88	82	76	83
<b>Sorghum</b>				
Headed	97	94	97	96
Coloring	80	78	76	79
Mature	76	74	65	73
Harvested	49	47	51	60
<b>Soybeans</b>				
Setting Pods	96	88	99	93
Dropping Leaves	48	43	51	63
Harvested	39	17	23	31
<b>Sunflowers</b>				
Harvested	25	22	39	37
<b>Winter Wheat</b>				
Planted	2	N/A	1	1

### Crop Condition

Crop	Percent of Acreage					Index <sup>1</sup>	
	Excellent	Good	Fair	Poor	Very Poor	2016	2015
Corn	11	45	31	11	2	74	74
Cotton	7	33	40	16	4	66	65
Peanuts	16	42	34	7	1	78	77
Rice	13	55	25	4	3	80	80
Sorghum	15	43	33	7	2	77	77
Soybeans	6	38	49	5	2	72	72
Range and Pasture	17	41	31	8	3	--	--

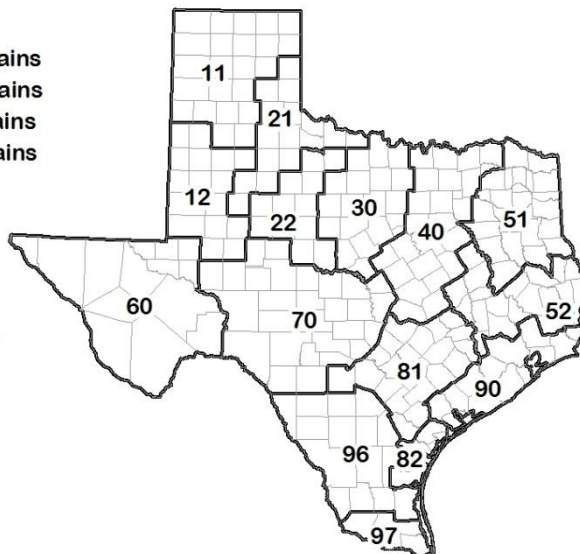
<sup>1</sup> The formula for the condition index is  $I = (5V + 25P + 60F + 90G + 110E)/100$  where I = crop condition index and V, P, F, G, E = percentage of crop rated very poor, poor, fair, good, excellent.

### Soil Moisture and Days Suitable by District

District	Topsoil Moisture Condition by District				Subsoil Moisture Condition by District				Days Suitable for Fieldwork
	Percentage of Acreage				Percentage of Acreage				
	Very Short	Short	Adequate	Surplus	Very Short	Short	Adequate	Surplus	
11	13	13	68	6	12	24	63	1	3.3
12	1	17	45	37	2	17	71	10	2.1
21	2	27	62	9	2	24	68	6	4.7
22	12	34	50	4	15	31	49	5	6.1
30	7	17	74	2	8	25	67	0	4.7
40	1	12	72	15	1	8	77	14	5.3
51	2	10	70	18	2	9	74	15	6.2
52	1	6	60	33	2	5	66	27	6.0
60	12	12	60	16	13	14	58	15	5.8
70	9	11	67	13	9	13	68	10	5.8
81	1	8	70	21	1	8	72	19	4.9
82	3	34	59	4	5	42	51	2	5.0
90	1	1	35	63	1	3	53	43	3.0
96	0	12	88	0	0	16	84	0	5.2
97	26	64	10	0	26	63	11	0	7.0
State	6	17	60	17	6	19	65	10	4.3

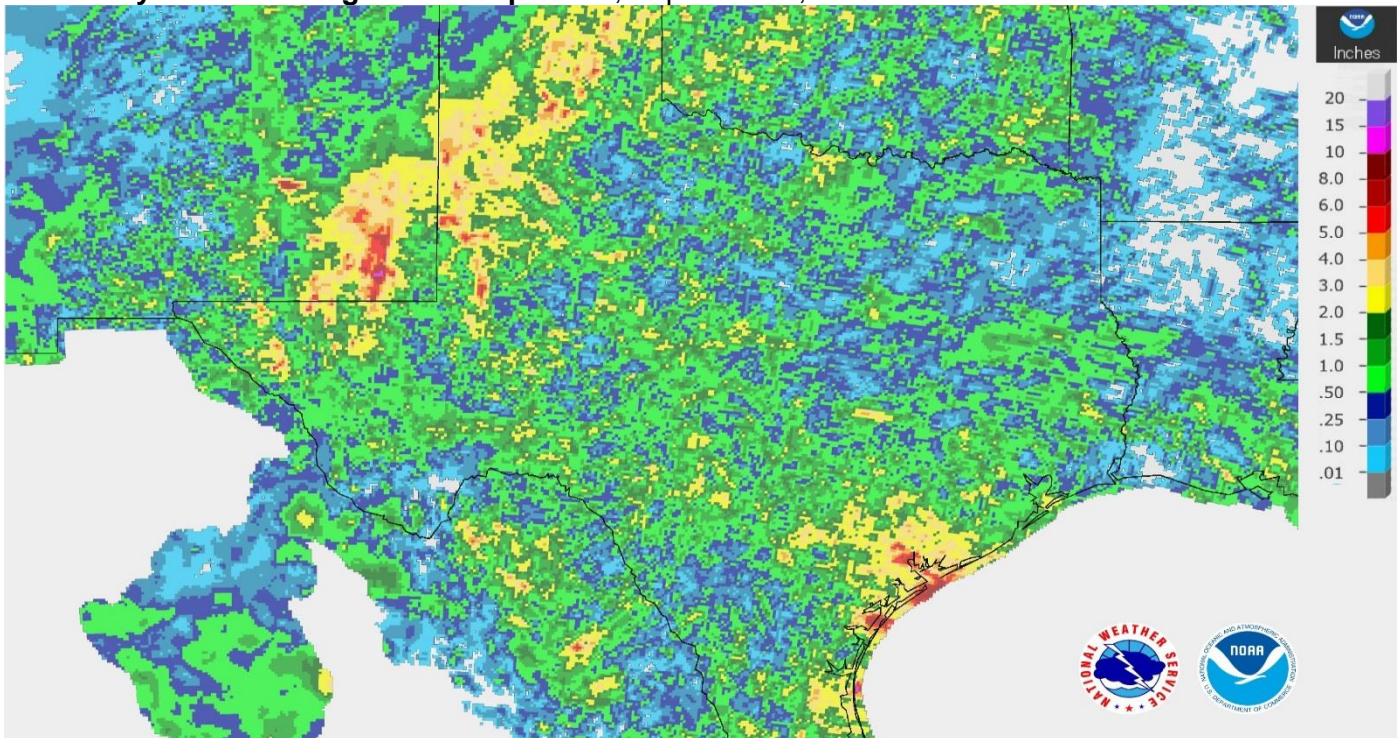
### Texas Agricultural Districts

- 11 Northern High Plains
- 12 Southern High Plains
- 21 Northern Low Plains
- 22 Southern Low Plains
- 30 Cross Timbers
- 40 Blacklands
- 51 North East
- 52 South East
- 60 Trans-Pecos
- 70 Edwards Plateau
- 81 South Central
- 82 Coaster Bend
- 90 Upper Coast
- 96 South
- 97 Lower Valley



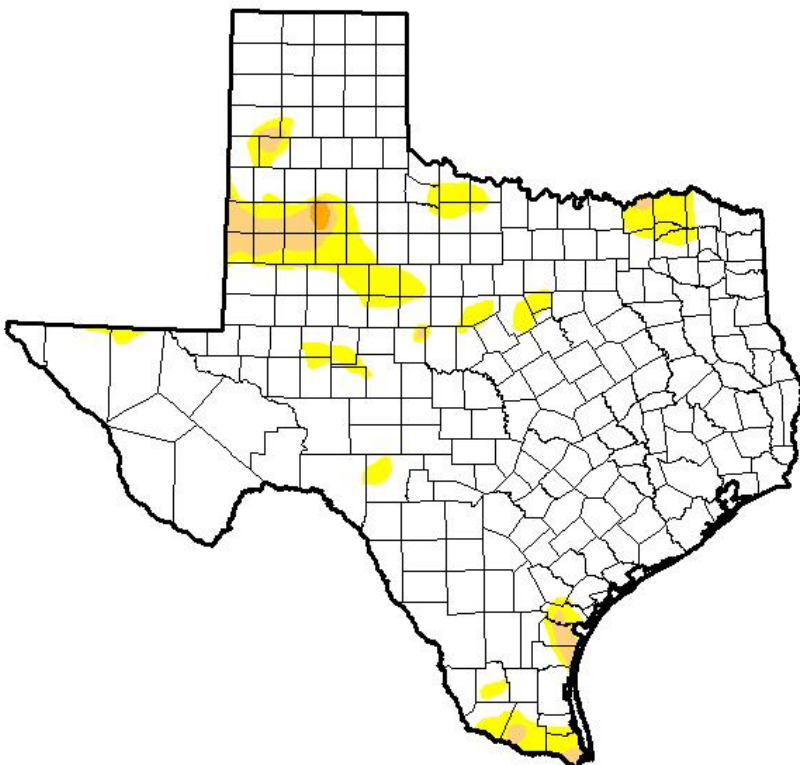


## Seven Day Observed Regional Precipitation, September 5, 2016



Source: National Weather Service, [www.nws.noaa.gov](http://www.nws.noaa.gov)

## Drought Monitor, Valid August 30, 2016



Drought Conditions (Percent Area)

	None	D0-D4	D1-D4	D2-D4	D3-D4	D4
<b>Current</b>	89.86	10.14	2.43	0.16	0.00	0.00
<b>Last Week</b> 8/23/2016	85.07	14.93	3.91	0.74	0.00	0.00
<b>3 Months Ago</b> 5/31/2016	98.62	1.38	0.00	0.00	0.00	0.00
<b>Start of Calendar Year</b> 1/2/2015	95.48	4.52	0.00	0.00	0.00	0.00
<b>Start of Water Year</b> 9/29/2015	34.51	65.49	38.32	17.55	6.27	0.00
<b>One Year Ago</b> 9/1/2015	58.06	41.94	24.76	9.99	1.32	0.00

*Intensity:*

- D0 Abnormally Dry
- D1 Moderate Drought
- D2 Severe Drought
- D3 Extreme Drought
- D4 Exceptional Drought

*The Drought Monitor focuses on broad-scale conditions. Local conditions may vary. See accompanying text summary for forecast statements.*

**Author:**

Chris Fenimore  
NCE/NESDIS/NOAA



Source: National Drought Mitigation Center, a partnership with USDA, U.S. Department of Commerce/NOAA, <http://droughtmonitor.unl.edu>