



# Texas Crop Progress and Condition

Southern Plains Regional Field Office  
Post Office Box 70 Austin, Texas 78767  
(800) 626-3142 · FAX (855) 270-2725 · www.nass.usda.gov/tx

Issue: TX-CW3616

Weekly Summary for September 12- 18

Released: September 19, 2016

Most of the state received moderate rainfall last week, with areas of the Plains, Trans-Pecos, and the Cross Timbers recording up to 5 inches. Other areas, including the Upper Coast, South Texas, and the Lower Valley experienced between .5 of an inch and 3 inches of rainfall. The rest of the state received only trace amounts of precipitation.

Stage	Crop Progress			
	Percent of Acreage			
	Current Week	Previous Week	Previous Year	5 Year Average
<b>Corn</b>				
Dented	93	83	87	92
Mature	75	67	72	79
Harvested	63	58	59	63
<b>Cotton</b>				
Bolls Opening	31	29	43	48
Harvested	9	8	12	13
<b>Peanuts</b>				
Harvested	1	N/A	11	3
<b>Sorghum</b>				
Coloring	82	81	88	86
Mature	78	77	71	76
Harvested	61	60	61	64
<b>Soybeans</b>				
Dropping Leaves	71	64	66	74
Harvested	45	42	39	52
<b>Sunflowers</b>				
Harvested	40	35	48	46
<b>Winter Wheat</b>				
Planted	14	5	14	15

**Small Grains:** Wheat seeding was active in areas of the Plains, the Cross Timbers, and South Texas. Seeding preparation for oats continued in other areas of the state.

**Row Crops:** Cotton harvest progressed in areas of the Blacklands, Southeast Texas, and South Texas, while harvest was delayed in the Trans-Pecos, Edwards Plateau, and the Upper Coast. Cotton stalk shredding was active in many parts of the state. Producers in Northeast Texas were preparing for defoliation in the coming week. Sugar cane aphids were a concern of sorghum producers in areas of the High Plains, while harvest was wrapping up in areas of the Southern Low Plains. Corn continued to mature in the Northern High Plains, and harvest was nearing completion in the Blacklands and South Central Texas. The peanut crop progressed in areas of South Texas aided by recent rainfall. Soybeans in the Blacklands continued to progress.

**Fruit, Vegetable and Specialty Crops:** In the Lower Valley, fall vegetable planting was underway. Pecans made good progress in the Trans-Pecos and South Texas.

**Livestock, Range and Pasture:** Range and pasture conditions in the Southern Low Plains, the Lower Valley, and South Texas benefitted from recent rains. Armyworm infestations were reported in pastures and hayfields around the Cross Timbers, the Blacklands, and South Texas. Around the state, rainfall increased stock tank levels, but many tanks and ponds remained low. Livestock remained in good condition across the state.

### Crop Condition

Crop	Percent of Acreage					Index <sup>1</sup>	
	Excellent	Good	Fair	Poor	Very Poor	2016	2015
Corn	11	45	31	11	2	74	76
Cotton	7	35	38	15	5	66	67
Peanuts	16	42	35	6	1	78	79
Sorghum	15	41	34	8	2	76	80
Soybeans	6	40	45	7	2	71	65
Range and Pasture	16	44	29	8	3	--	--

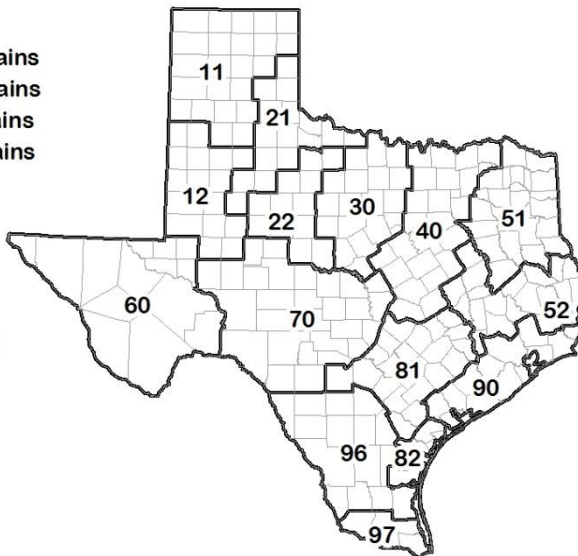
<sup>1</sup> The formula for the condition index is  $I = (5V + 25P + 60F + 90G + 110E)/100$  where I = crop condition index and V, P, F, G, E = percentage of crop rated very poor, poor, fair, good, excellent.

### Soil Moisture and Days Suitable by District

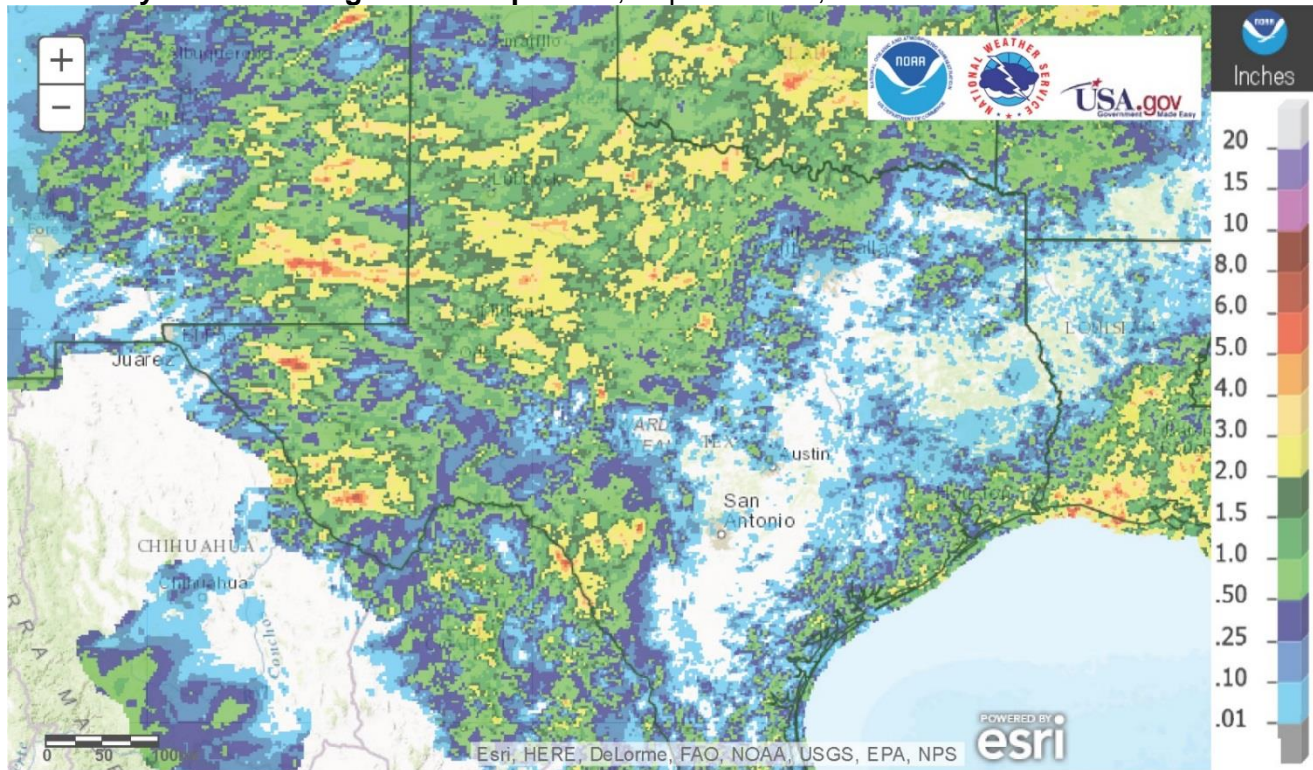
District	Topsoil Moisture Condition by District				Subsoil Moisture Condition by District				Days Suitable for Fieldwork
	Percentage of Acreage				Percentage of Acreage				
	Very Short	Short	Adequate	Surplus	Very Short	Short	Adequate	Surplus	
11	12	9	75	4	11	19	69	1	5.6
12	1	9	62	28	1	7	69	23	3.3
21	0	12	78	10	1	13	77	9	3.9
22	7	20	67	6	8	19	62	11	4.4
30	8	15	63	14	10	18	70	2	4.9
40	3	29	60	8	2	18	73	7	6.7
51	2	20	71	7	2	13	75	10	6.9
52	1	12	65	22	2	9	71	18	6.9
60	13	18	39	30	14	25	45	16	6.2
70	6	18	69	7	5	22	63	10	5.4
81	1	20	70	9	1	16	71	12	6.8
82	0	34	66	0	5	42	53	0	5.0
90	0	4	48	48	0	8	57	35	4.9
96	0	20	80	0	1	25	74	0	4.3
97	23	67	10	0	23	65	12	0	7.0
State	5	17	65	13	5	18	67	10	5.2

### Texas Agricultural Districts

- 11 Northern High Plains
- 12 Southern High Plains
- 21 Northern Low Plains
- 22 Southern Low Plains
- 30 Cross Timbers
- 40 Blacklands
- 51 North East
- 52 South East
- 60 Trans-Pecos
- 70 Edwards Plateau
- 81 South Central
- 82 Coaster Bend
- 90 Upper Coast
- 96 South
- 97 Lower Valley

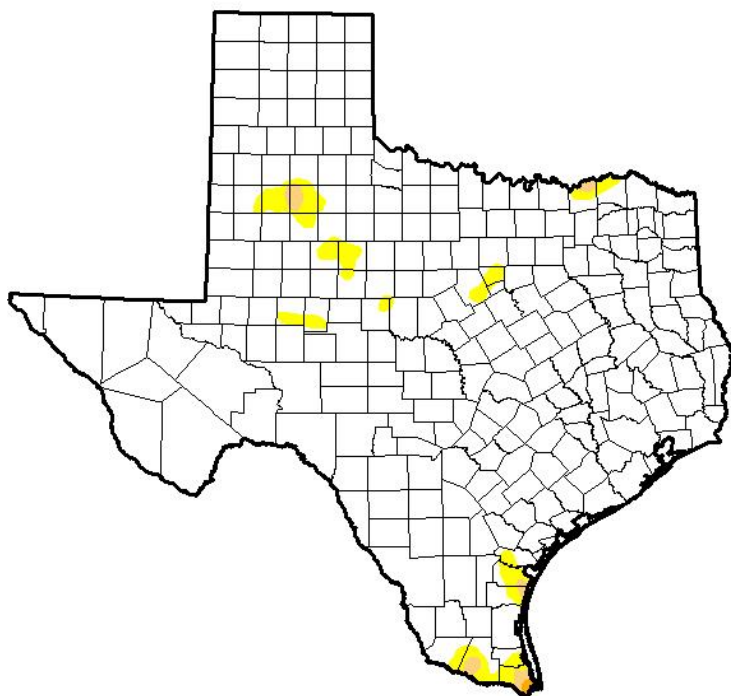


## Seven Day Observed Regional Precipitation, September 18, 2016



Source: National Weather Service, [www.nws.noaa.gov](http://www.nws.noaa.gov)

## Drought Monitor, Valid September 13, 2016



Drought Conditions (Percent Area)

	None	D0-D4	D1-D4	D2-D4	D3-D4	D4
<b>Current</b>	96.22	3.78	0.67	0.09	0.00	0.00
<b>Last Week</b> 9/6/2016	92.46	7.54	0.57	0.00	0.00	0.00
<b>3 Months Ago</b> 6/14/2016	98.62	1.38	0.00	0.00	0.00	0.00
<b>Start of Calendar Year</b> 12/29/2015	95.48	4.52	0.00	0.00	0.00	0.00
<b>Start of Water Year</b> 9/29/2015	34.51	65.49	38.32	17.55	6.27	0.00
<b>One Year Ago</b> 9/15/2015	48.77	51.23	26.71	10.46	3.92	0.00

**Intensity:**

- D0 Abnormally Dry
- D1 Moderate Drought
- D2 Severe Drought
- D3 Extreme Drought
- D4 Exceptional Drought

The Drought Monitor focuses on broad-scale conditions. Local conditions may vary. See accompanying text summary for forecast statements.

**Author:**

Eric Luebehusen  
U.S. Department of Agriculture



Source: National Drought Mitigation Center, a partnership with USDA, U.S. Department of Commerce/NOAA, <http://droughtmonitor.unl.edu>