



# Texas Crop Progress and Condition

Southern Plains Regional Field Office  
Post Office Box 70 Austin, Texas 78767  
(800) 626-3142 · FAX (855) 270-2725 · www.nass.usda.gov/tx

Issue: TX-CW3916

Weekly Summary for October 3 - October 9 Released: October 11, 2016

Areas of the Low Plains, Cross Timbers, and Coastal Bend received up to 3 inches of rainfall, while areas of the Trans-Pecos and the Blacklands received up to 1.5 inches of rainfall. Scattered showers totaling less than 1 inch were seen in areas of the High Plains, Edwards Plateau, and the Upper Coast. The rest of the state received little to no rainfall.

**Small Grains:** Winter wheat and oats seeding continued across the state. Rainfall helped the germination and emergence of recently-seeded fields, but also delayed small grains seeding activities in some areas.

## Crop Progress

Stage	Percent of Acreage			
	Current	Previous Week	Previous Year	5 Year Average
<b>Corn</b>				
Mature	90	86	86	90
Harvested	76	75	66	74
<b>Cotton</b>				
Bolls Opening	70	59	82	76
Harvested	19	17	23	20
<b>Peanuts</b>				
Harvested	14	8	28	23
<b>Sorghum</b>				
Coloring	97	93	99	95
Mature	86	80	86	82
Harvested	70	69	68	70
<b>Soybeans</b>				
Dropping Leaves	86	85	77	88
Harvested	57	55	57	69
<b>Sunflowers</b>				
Harvested	60	58	66	64
<b>Winter Wheat</b>				
Planted	48	35	45	52
Emerged	31	18	17	24
<b>Oats</b>				
Planted	29	17	38	42

**Row Crops:** Cotton bolls were opening in areas of the Southern Low Plains and Edwards Plateau, while harvest continued in the Blacklands, Upper Coast, and South Texas. Cotton defoliation was active in areas of the Southern Plains and Edwards Plateau. Corn harvest was in full swing in the Northern High Plains. Soybean harvest progressed in the Blacklands, while sorghum harvest continued in areas of South Texas. Peanuts harvest was underway with some later planted fields receiving a final irrigation application in South Texas.

**Fruit, Vegetable and Specialty Crops:** Citrus and sugarcane harvest began in the Lower Valley. Onions, cabbage, and spinach crops progressed in South Texas. Pecan harvest was underway in South Central and South Texas, and nut development continued to progress in the Edwards Plateau and Cross Timbers.

**Livestock, Range and Pasture:** Livestock were in good condition throughout most of the state. Stock tanks and ponds remained full in areas of the Blacklands. Range and pasture remained in good condition in areas of the Blacklands, Edwards Plateau, and the Lower Valley. Winter pasture seeding was active in areas of South Central Texas and the Upper Coast, while armyworm populations were causing persistent damage to emerging winter pasture in areas of the Coastal Bend.

### Crop Condition

Crop	Percent of Acreage					Index <sup>1</sup>	
	Excellent	Good	Fair	Poor	Very Poor	2016	2015
Corn	11	45	31	11	2	74	75
Cotton	8	36	37	15	4	67	65
Peanuts	17	43	34	6	0	79	81
Sorghum	15	40	35	8	2	76	80
Soybeans	7	36	43	11	3	69	62
Range and Pasture	12	42	34	9	3	--	--

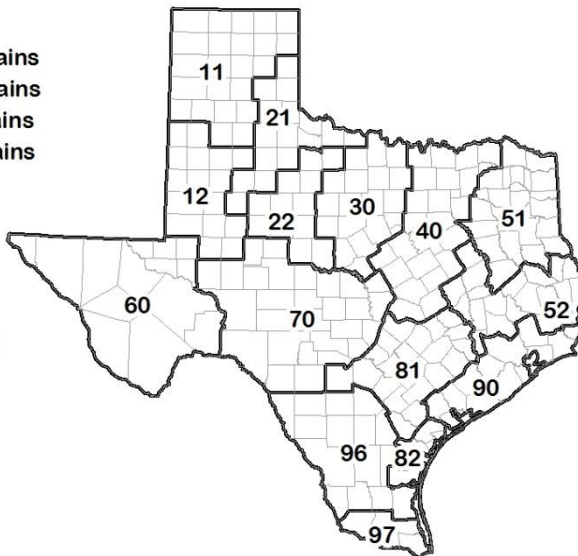
<sup>1</sup> The formula for the condition index is  $I = (5V + 25P + 60F + 90G + 110E)/100$  where I = crop condition index and V, P, F, G, E = percentage of crop rated very poor, poor, fair, good, excellent.

### Soil Moisture and Days Suitable by District

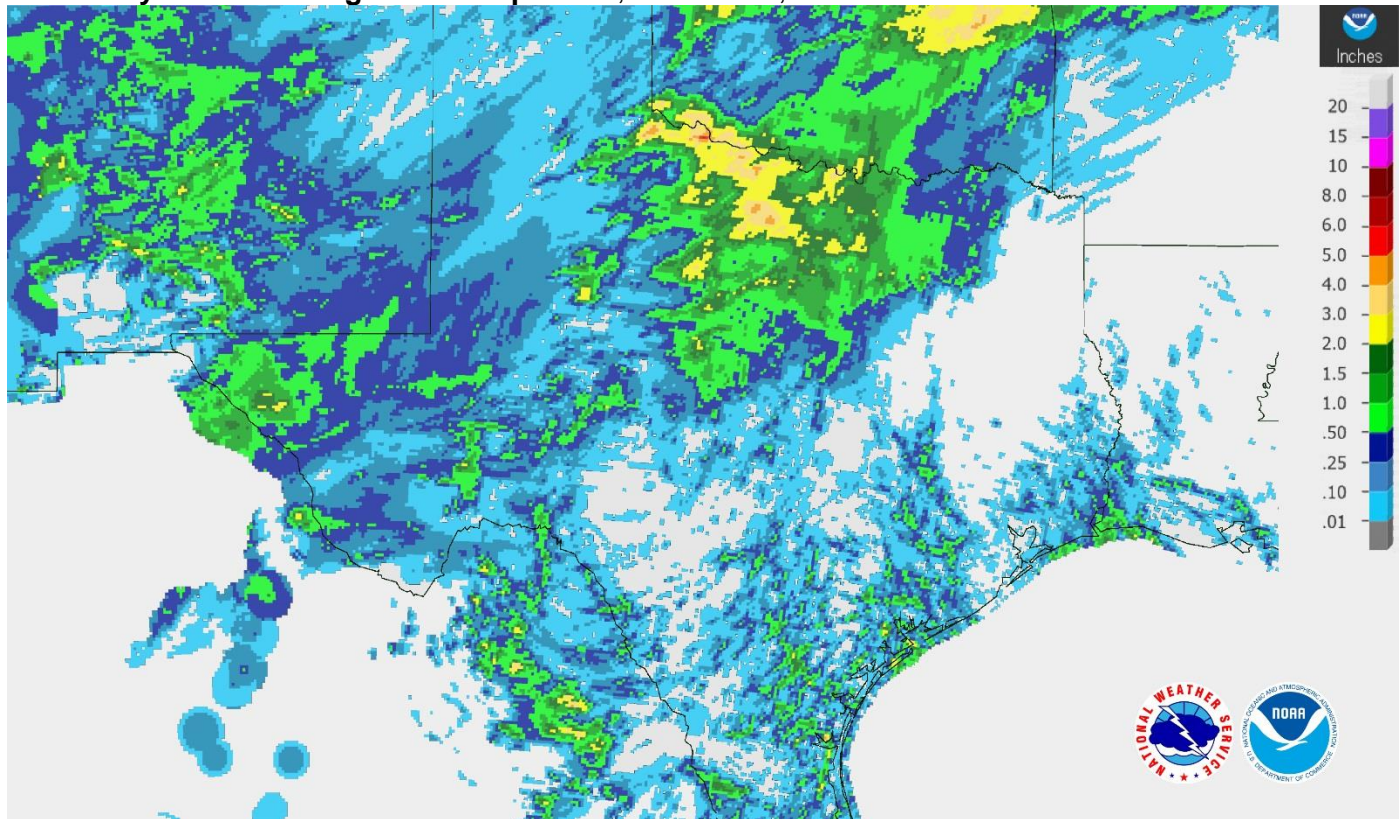
District	Topsoil Moisture Condition by District				Subsoil Moisture Condition by District				Days Suitable for Fieldwork
	Percentage of Acreage				Percentage of Acreage				
	Very Short	Short	Adequate	Surplus	Very Short	Short	Adequate	Surplus	
11	15	30	54	1	12	29	57	2	6.9
12	1	31	59	9	1	15	80	4	6.9
21	1	19	61	19	1	22	71	6	5.9
22	0	20	69	11	2	20	66	12	5.2
30	6	11	81	2	7	13	78	2	5.7
40	15	37	46	2	7	31	55	7	6.2
51	9	39	47	5	6	37	50	7	6.9
52	4	20	76	0	4	14	81	1	7.0
60	13	26	61	0	15	32	53	0	6.7
70	4	14	72	10	2	16	71	11	6.7
81	3	23	70	4	2	18	76	4	6.8
82	0	18	72	10	5	25	66	4	5.4
90	0	18	65	17	0	16	52	32	6.3
96	14	37	49	0	14	29	57	0	6.2
97	58	27	15	0	0	89	11	0	7.0
State	9	27	58	6	5	25	64	6	6.4

### Texas Agricultural Districts

- 11 Northern High Plains
- 12 Southern High Plains
- 21 Northern Low Plains
- 22 Southern Low Plains
- 30 Cross Timbers
- 40 Blacklands
- 51 North East
- 52 South East
- 60 Trans-Pecos
- 70 Edwards Plateau
- 81 South Central
- 82 Coaster Bend
- 90 Upper Coast
- 96 South
- 97 Lower Valley

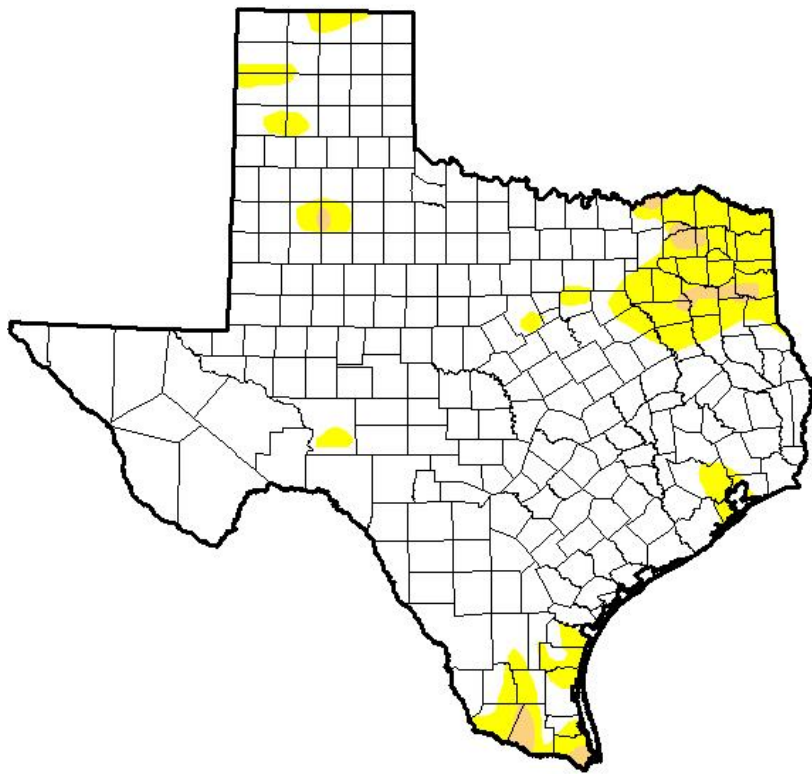


## Seven Day Observed Regional Precipitation, October 10, 2016



Source: National Weather Service, [www.nws.noaa.gov](http://www.nws.noaa.gov)

## Drought Monitor, Valid October 4, 2016



Drought Conditions (Percent Area)

	None	D0-D4	D1-D4	D2-D4	D3-D4	D4
<b>Current</b>	88.04	11.96	1.41	0.00	0.00	0.00
<b>Last Week</b> 9/27/2016	94.83	5.17	0.62	0.00	0.00	0.00
<b>3 Months Ago</b> 7/5/2016	97.07	2.93	0.00	0.00	0.00	0.00
<b>Start of Calendar Year</b> 12/29/2015	95.48	4.52	0.00	0.00	0.00	0.00
<b>Start of Water Year</b> 9/27/2016	94.83	5.17	0.62	0.00	0.00	0.00
<b>One Year Ago</b> 10/6/2015	29.70	70.30	48.43	24.66	10.17	0.00

Intensity:

- D0 Abnormally Dry
- D1 Moderate Drought
- D2 Severe Drought
- D3 Extreme Drought
- D4 Exceptional Drought

The Drought Monitor focuses on broad-scale conditions. Local conditions may vary. See accompanying text summary for forecast statements.

**Author:**

Brian Fuchs  
National Drought Mitigation Center



Source: National Drought Mitigation Center, a partnership with USDA, U.S. Department of Commerce/NOAA, <http://droughtmonitor.unl.edu>

### Texas Crop Progress and Condition (October 2016)

USDA, National Agricultural Statistics Service, Southern Plains Regional Field Office