



Texas Crop Progress and Condition

Southern Plains Regional Field Office
Post Office Box 70 Austin, Texas 78767
(800) 626-3142 · FAX (855) 270-2725 · www.nass.usda.gov/tx

Issue: TX-CW4016 Weekly Summary for October 10 - October 16 Released: October 17, 2016

Areas in East Texas experienced upwards of 2.0 inches of rain, with concentrated areas receiving upwards of 5.0 inches in North East Texas. Rainfall totals upwards of 1.0 inch were reported across areas of the Plains and Cross Timbers. As for the rest of the state rainfall ranged from no measurable precipitation to light scattered showers.

Small Grains: Winter wheat and oat seedings continued across the state, with producers taking advantage of soil moisture while available. Re-seeding of some wheat fields was necessary in areas of the Northern High Plains due to insects and disease issues.

Row Crops: Cotton harvest continued to progress statewide. Growers in areas of the Trans-Pecos applied defoliant preparing for harvest. Corn and sorghum harvest continued in the Plains as producers moved closer to completion. Soybean harvest progressed in areas of the Northern High Plains and South East Texas. Peanuts harvest continued in areas of the Southern High and Low Plains along with South Texas.

Fruit, Vegetable and Specialty Crops: Fall vegetable planting was active, while sugarcane harvest continued in areas of the Lower Valley. Pecan harvest continued in areas of the Edwards Plateau, the Cross Timbers, and South Central Texas.

Livestock, Range and Pasture: Livestock continued to progress across the state with abundant forage growth due to good pasture conditions. Stock tank and pond levels declined in areas of North East Texas. Army worm continued to cause problems for producers in areas of the Cross Timbers, the Blacklands, and South East Texas.

Crop Progress

Stage	Percent of Acreage			
	Current	Previous Week	Previous Year	5 Year Average
Corn				
Mature	95	90	89	93
Harvested	80	76	73	80
Cotton				
Bolls Opening	84	70	91	83
Harvested	22	19	27	24
Peanuts				
Harvested	25	14	33	38
Sorghum				
Mature	90	86	88	87
Harvested	73	70	73	72
Soybeans				
Dropping Leaves	90	86	92	92
Harvested	70	57	71	74
Sunflowers				
Harvested	65	60	72	70
Winter Wheat				
Planted	65	48	59	62
Emerging	32	31	31	36
Oats				
Planted	55	29	53	57
Emerging	20	N/A	17	24

Crop Condition

Crop	Percent of Acreage					Index ¹	
	Excellent	Good	Fair	Poor	Very Poor	2016	2015
Corn	11	44	31	11	3	73	75
Cotton	8	36	37	15	4	67	65
Peanuts	17	41	35	6	1	78	81
Sorghum	15	40	35	8	2	76	80
Soybeans	6	36	43	11	4	68	62
Range & Pasture	10	40	37	9	4	--	--

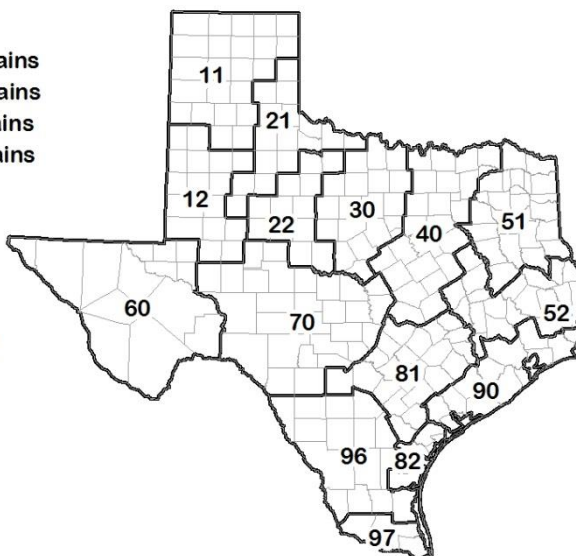
¹ The formula for the condition index is $I = (5V + 25P + 60F + 90G + 110E)/100$ where I = crop condition index and V, P, F, G, E = percentage of crop rated very poor, poor, fair, good, excellent.

Soil Moisture and Days Suitable by District

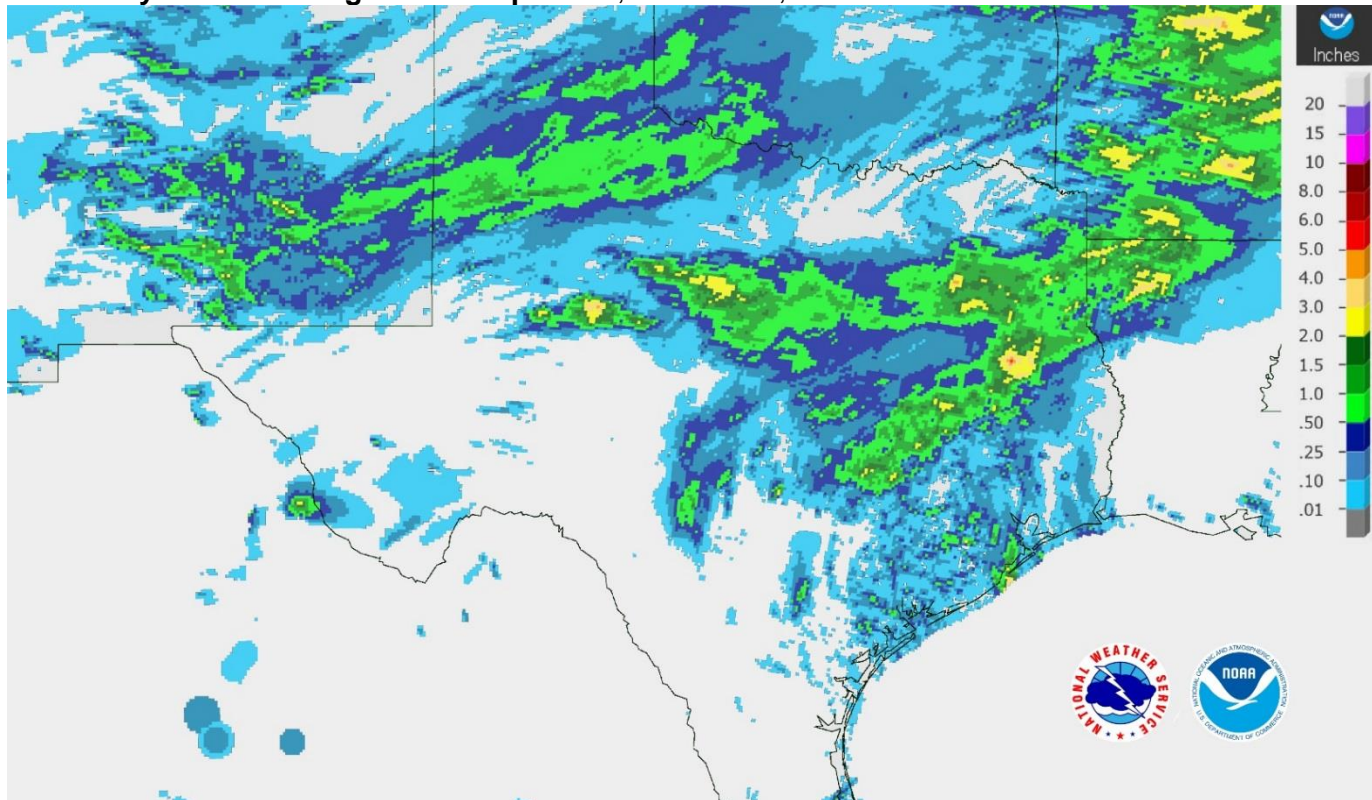
District	Topsoil Moisture Condition by District				Subsoil Moisture Condition by District				Days Suitable For Fieldwork
	Percentage of Acreage				Percentage of Acreage				
	Very Short	Short	Adequate	Surplus	Very Short	Short	Adequate	Surplus	
11	18	37	44	1	12	40	48	0	6.0
12	1	23	65	11	1	19	76	4	6.0
21	1	16	64	19	0	19	75	6	6.0
22	0	24	70	6	2	20	69	9	5.0
30	6	13	80	1	7	14	78	1	6.0
40	18	40	40	2	11	43	39	7	7.0
51	11	44	42	3	10	45	39	6	7.0
52	2	41	56	1	4	18	77	1	7.0
60	15	28	57	0	17	34	49	0	7.0
70	5	17	74	4	3	19	74	4	7.0
81	5	30	61	4	5	24	67	4	7.0
82	0	22	70	8	4	31	62	3	6.0
90	0	19	64	17	0	17	51	32	7.0
96	15	45	40	0	16	28	56	0	7.0
97	58	27	15	0	0	89	11	0	7.0
State	10	29	55	6	6	30	59	5	6.0

Texas Agricultural Districts

- 11 Northern High Plains
- 12 Southern High Plains
- 21 Northern Low Plains
- 22 Southern Low Plains
- 30 Cross Timbers
- 40 Blacklands
- 51 North East
- 52 South East
- 60 Trans-Pecos
- 70 Edwards Plateau
- 81 South Central
- 82 Coaster Bend
- 90 Upper Coast
- 96 South
- 97 Lower Valley

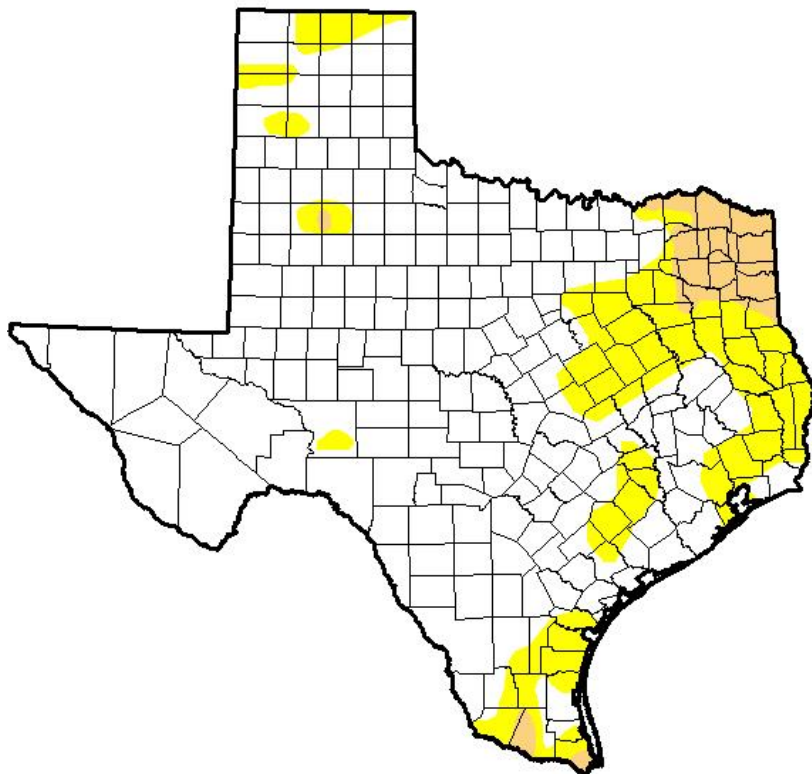


Seven Day Observed Regional Precipitation, October 17, 2016



Source: National Weather Service, www.nws.noaa.gov

Drought Monitor, Valid October 11, 2016



Drought Conditions (Percent Area)

	None	D0-D4	D1-D4	D2-D4	D3-D4	D4
Current	78.07	21.93	4.40	0.00	0.00	0.00
Last Week <i>10/4/2016</i>	88.04	11.96	1.41	0.00	0.00	0.00
3 Months Ago <i>7/12/2016</i>	93.97	6.03	0.00	0.00	0.00	0.00
Start of Calendar Year <i>12/29/2015</i>	95.48	4.52	0.00	0.00	0.00	0.00
Start of Water Year <i>9/27/2016</i>	94.83	5.17	0.62	0.00	0.00	0.00
One Year Ago <i>10/13/2015</i>	36.47	63.53	47.03	31.88	13.89	1.42

Intensity:

- D0 Abnormally Dry
- D1 Moderate Drought
- D2 Severe Drought
- D3 Extreme Drought
- D4 Exceptional Drought

The Drought Monitor focuses on broad-scale conditions. Local conditions may vary. See accompanying text summary for forecast statements.

Author:

Brian Fuchs
National Drought Mitigation Center



Source: National Drought Mitigation Center, a partnership with USDA, U.S. Department of Commerce/NOAA, <http://droughtmonitor.unl.edu>

Texas Crop Progress and Condition (October 2016)

USDA, National Agricultural Statistics Service, Southern Plains Regional Field Office