



Texas Crop Progress and Condition

Southern Plains Regional Field Office Post Office Box 70 Austin, Texas 78767
(800) 626-3142 · FAX (855) 270-2725 · www.nass.usda.gov/tx

Issue: TX-4116

Weekly Summary for Oct 17- 23

Released: October 24, 2016

Many areas of the state received little to no precipitation last week. Light scattered showers ranging from 0.1 inch to upwards of 1.0 inch were experienced in areas of the Southern Low Plains, the Cross Timbers, and East Texas. With isolated areas in the Cross Timbers receiving upwards of 2.0 inches.

Small Grains: Seeding of winter wheat and oats continued throughout the state last week. Insect problems continue to affect some wheat producers in areas of the Northern High Plains, the Blacklands, and South Texas. Winter wheat planted was at 67 percent, 2 points above previous year and 3 points below normal. Oats planted was at 65 percent, 2 points below previous year and 3 points below normal.

Crop Progress

Stage	Percent of Acreage			
	Current Week	Previous Week	Previous Year	5 Year Average
Corn				
Harvested	85	80	76	85
Cotton				
Bolls Opening	90	84	93	89
Harvested	28	22	34	31
Peanuts				
Harvested	45	25	40	49
Sorghum				
Mature	93	90	92	91
Harvested	78	73	78	75
Soybeans				
Dropping Leaves	95	90	98	95
Harvested	78	70	79	80
Sunflowers				
Harvested	70	65	75	72
Winter Wheat				
Planted	67	65	66	70
Emerged	42	32	41	45
Oats				
Planted	65	55	67	68
Emerged	25	20	27	36

Row Crops: Cotton harvest continued across the state with many fields defoliated and ready for picking. Corn, sorghum, and soybeans harvest was in full swing. Sugar cane aphids continued to damage some sorghum fields in areas of the Northern High Plains. Irrigation continued on unharvested peanuts in areas of the Southern High Plains and South Texas.

Fruit, Vegetable and Specialty Crops: In areas of the Lower Valley irrigated fruits and vegetables progressed well. In South Texas, low precipitation kept irrigation active on fall vegetable crops. Pecan harvest was ongoing in areas of the Upper Coast, South Central and South Texas.

Livestock, Range and Pasture: Livestock remained in good condition throughout most of the state, while range and pasture conditions began to suffer across many areas of the state due to lack of rainfall. Pond levels continued to decline in areas of North East Texas.

Crop Condition

Crop	Percent of Acreage					Index ¹	
	Excellent	Good	Fair	Poor	Very Poor	2016	2015
Corn	11	44	31	11	3	73	75
Cotton	8	36	37	15	4	67	65
Peanuts	17	41	35	6	1	78	81
Sorghum	15	40	35	8	2	76	80
Soybeans	6	36	43	11	4	68	62
Winter Wheat	3	34	50	10	3	67	70
Range & Pasture	9	39	37	11	4	--	--

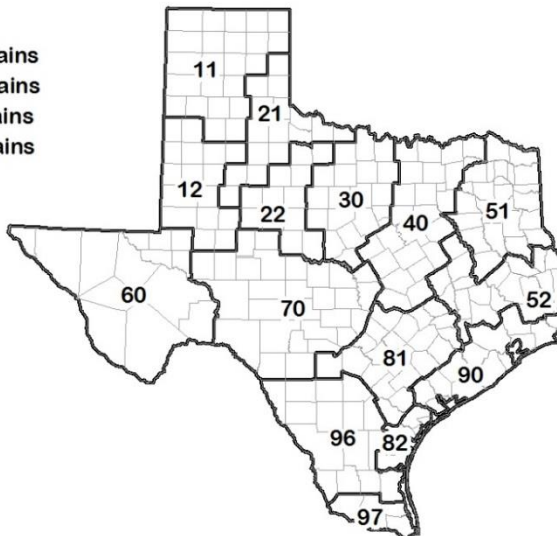
¹ The formula for the condition index is $I = (5V + 25P + 60F + 90G + 110E)/100$ where I = crop condition index and V, P, F, G, E = percentage of crop rated very poor, poor, fair, good, excellent.

Soil Moisture and Days Suitable by District

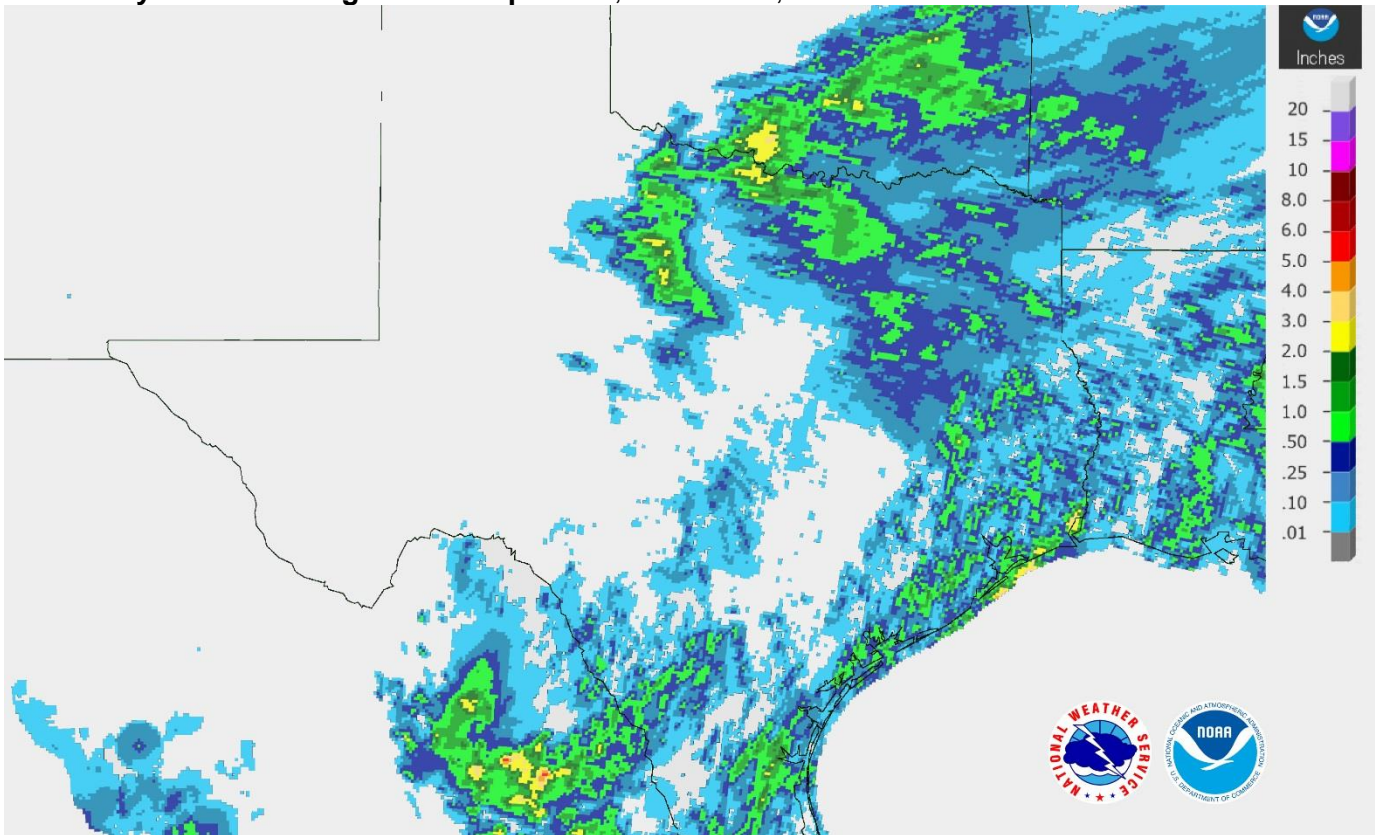
District	Topsoil Moisture Condition by District				Subsoil Moisture Condition by District				Days Suitable For Fieldwork
	Percentage of Acreage				Percentage of Acreage				
	Very Short	Short	Adequate	Surplus	Very Short	Short	Adequate	Surplus	
11	20	45	34	1	14	42	44	0	7.0
12	1	29	64	6	2	26	68	4	7.0
21	0	24	72	4	0	29	65	6	6.0
22	0	26	65	9	2	22	65	11	6.0
30	6	14	77	3	7	17	75	1	6.0
40	23	38	37	2	16	36	41	7	7.0
51	12	38	48	2	11	43	42	4	7.0
52	4	47	48	1	7	26	66	1	7.0
60	19	32	49	0	19	33	48	0	7.0
70	8	22	67	3	3	24	69	4	7.0
81	9	40	49	2	7	36	56	1	7.0
82	4	27	61	8	5	32	60	3	6.0
90	3	20	69	8	3	16	48	33	6.0
96	20	49	28	3	18	46	36	0	6.0
97	51	25	14	10	20	71	9	0	5.0
State	12	33	51	4	9	33	53	5	6.6

Texas Agricultural Districts

- 11 Northern High Plains
- 12 Southern High Plains
- 21 Northern Low Plains
- 22 Southern Low Plains
- 30 Cross Timbers
- 40 Blacklands
- 51 North East
- 52 South East
- 60 Trans-Pecos
- 70 Edwards Plateau
- 81 South Central
- 82 Coaster Bend
- 90 Upper Coast
- 96 South
- 97 Lower Valley

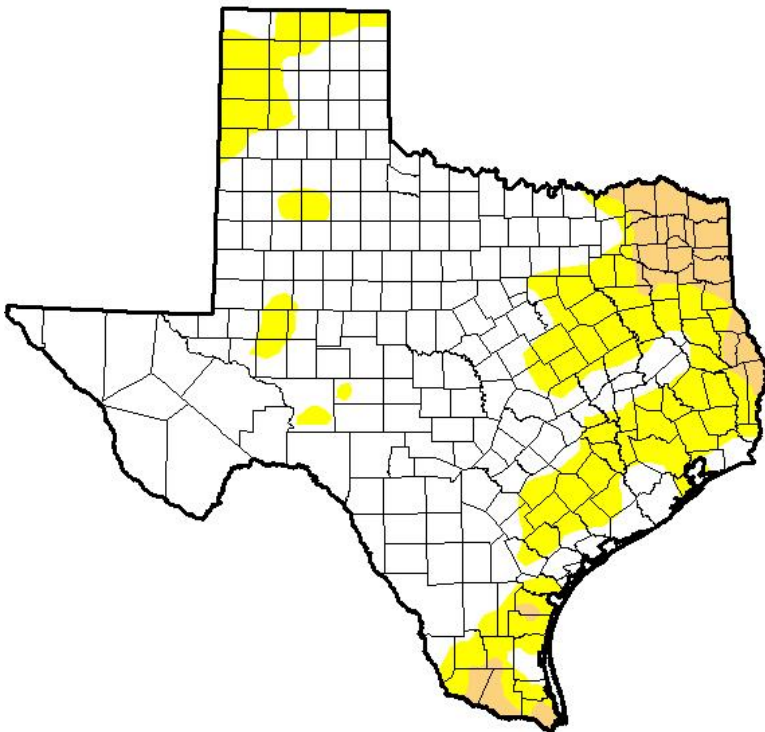


Seven Day Observed Regional Precipitation, October 23, 2016



Source: National Weather Service, www.nws.noaa.gov

Drought Monitor, Valid October 18, 2016



Drought Conditions (Percent Area)

	None	D0-D4	D1-D4	D2-D4	D3-D4	D4
Current	70.53	29.47	5.91	0.00	0.00	0.00
Last Week <i>10/11/2016</i>	78.07	21.93	4.40	0.00	0.00	0.00
3 Months Ago <i>7/19/2016</i>	86.88	13.12	1.66	0.00	0.00	0.00
Start of Calendar Year <i>12/29/2015</i>	95.48	4.52	0.00	0.00	0.00	0.00
Start of Water Year <i>9/27/2016</i>	94.83	5.17	0.62	0.00	0.00	0.00
One Year Ago <i>10/20/2015</i>	34.75	65.25	50.28	41.88	21.40	5.52

Intensity:

- D0 Abnormally Dry
- D1 Moderate Drought
- D2 Severe Drought
- D3 Extreme Drought
- D4 Exceptional Drought

The Drought Monitor focuses on broad-scale conditions. Local conditions may vary. See accompanying text summary for forecast statements.

Author:

Eric Luebbehusen
U.S. Department of Agriculture



Source: National Drought Mitigation Center, a partnership with USDA, U.S. Department of Commerce/NOAA, <http://droughtmonitor.unl.edu>

Texas Crop Progress and Condition (September 2016)

USDA, National Agricultural Statistics Service, Southern Plains Regional Field Office