



Texas Crop Progress and Condition

Southern Plains Regional Field Office
Post Office Box 70 Austin, Texas 78767
(800) 626-3142 · FAX (855) 270-2725 · www.nass.usda.gov/tx

Issue: TX-CW4216

Weekly Summary for October 24 - 30

Released: October 31, 2016

Areas of the Cross Timbers, Blacklands, Northeast Texas, and the Trans Pecos received up to 2 inches of rainfall, while the Edwards Plateau, Upper Coast, and Southeast Texas observed scattered showers. Large parts of the Panhandle and the Southern Plains remained dry.

Small Grains: Winter wheat and oat seeding continued in most areas. Winter wheat in areas of the Emerged winter wheat was in need of additional rainfall in areas of the Northern Plains, Cross Timbers, and the Edwards Plateau. Oats development was slowed in areas of the Upper Coast due to dry weather.

Crop Progress

Stage	Percent of Acreage			
	Current Week	Previous Week	Previous Year	5 Year Average
Corn				
Harvested	90	85	82	90
Cotton				
Bolls Opening	93	90	95	93
Harvested	30	28	39	39
Peanuts				
Harvested	57	45	53	63
Sorghum				
Mature	94	93	94	94
Harvested	80	78	82	78
Soybeans				
Dropping Leaves	96	95	99	96
Harvested	80	78	83	82
Sunflowers				
Harvested	72	70	82	76
Winter Wheat				
Planted	75	67	70	78
Emerged	56	42	52	56
Oats				
Planted	75	65	75	77
Emerged	30	25	31	46

Row Crops: Cotton harvest was underway in areas of the Southern High Plains, Blacklands, and Northeast Texas. Cotton gins were in full swing in areas of the Southern Low Plains and the Edwards Plateau. Cotton defoliation was active in areas of the Northern Low Plains. Corn harvest progressed in the Lower Valley as dry fields aided fieldwork. Soybean harvest was nearing completion in area of the Blacklands. In the Northern High Plains, sorghum harvest continued despite problems with sugarcane aphids. Peanuts harvest was in full swing in South Texas.

Fruit, Vegetable and Specialty Crop Report: Harvest of early-maturing pecan varieties continued in South Central and South Texas. Fall vegetables continued to develop in South Texas with irrigation active on cabbage, onions, and spinach. Planting of winter vegetables continued in the Lower Valley.

Livestock, Range and Pasture Report: Livestock remained in good condition across most of the state, with some livestock producers continuing supplemental feeding in areas of South Texas. In areas of the Upper Coast and Southeast Texas range and pasture conditions and stock tank levels continued to decline due to lack of rainfall. In areas of Northeast Texas, issues with feral hogs continued. Hay baling on improved pastures in the Lower Valley continued this week.

Crop Condition

Crop	Percent of Acreage					Index ¹	
	Excellent	Good	Fair	Poor	Very Poor	2016	2015
Corn	11	44	31	11	3	73	75
Cotton	8	38	35	15	4	68	65
Peanuts	17	42	35	6	0	79	81
Sorghum	15	40	35	8	2	76	80
Soybeans	6	36	43	11	4	68	62
Winter Wheat	2	35	46	14	3	65	69
Range and Pasture	6	37	40	13	4	--	--

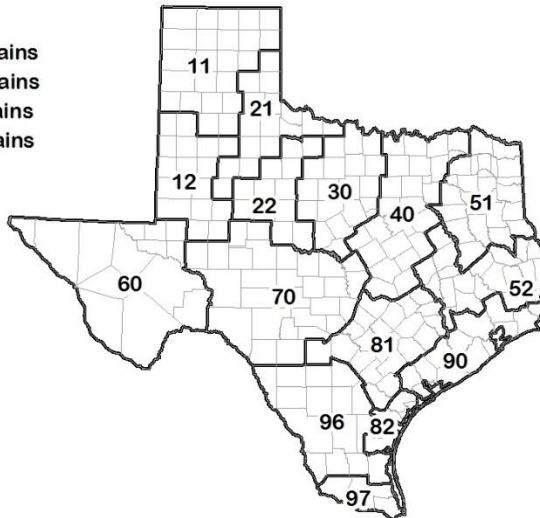
¹ The formula for the condition index is $I = (5V + 25P + 60F + 90G + 110E)/100$ where I = crop condition index and V, P, F, G, E = percentage of crop rated very poor, poor, fair, good, excellent.

Soil Moisture and Days Suitable by District

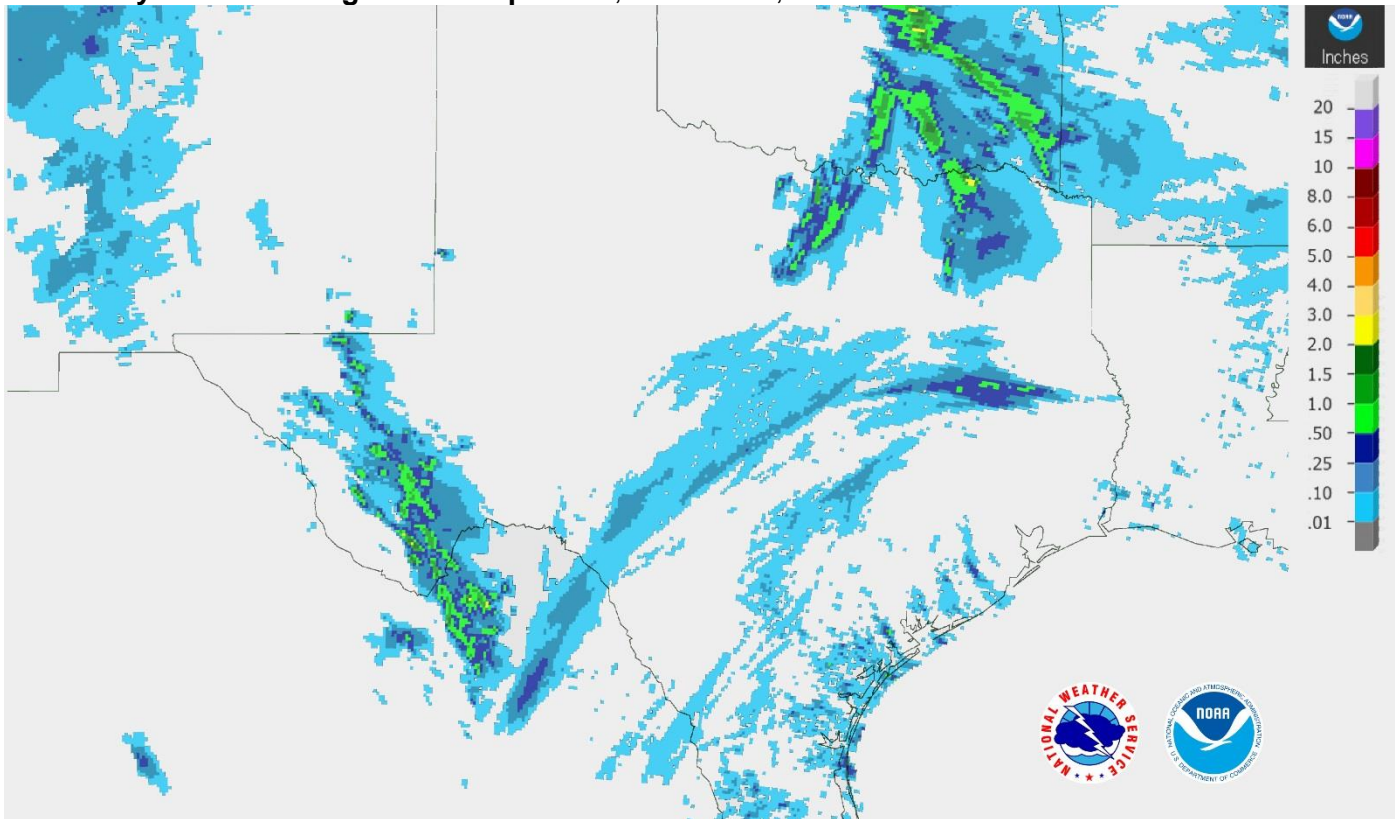
District	Topsoil Moisture Condition by District				Subsoil Moisture Condition by District				Days Suitable for Fieldwork
	Percentage of Acreage				Percentage of Acreage				
	Very Short	Short	Adequate	Surplus	Very Short	Short	Adequate	Surplus	
11	30	47	23	0	17	49	34	0	6.9
12	3	47	45	5	4	38	54	4	7.0
21	1	33	62	4	0	34	60	6	6.8
22	0	32	67	1	2	24	65	9	6.4
30	7	23	69	1	7	21	72	0	6.5
40	28	38	33	1	19	40	36	5	6.7
51	16	46	38	0	14	50	33	3	6.9
52	6	52	42	0	5	34	61	0	7.0
60	20	31	49	0	19	33	48	0	6.7
70	9	38	50	3	6	27	64	3	7.0
81	16	49	33	2	13	41	46	0	6.8
82	3	34	55	8	5	42	50	3	7.0
90	8	47	42	3	7	20	69	4	6.8
96	38	32	30	0	28	30	42	0	7.0
97	47	25	28	0	0	72	28	0	5.7
State	16	41	41	2	10	38	49	3	6.8

Texas Agricultural Districts

- 11 Northern High Plains
- 12 Southern High Plains
- 21 Northern Low Plains
- 22 Southern Low Plains
- 30 Cross Timbers
- 40 Blacklands
- 51 North East
- 52 South East
- 60 Trans-Pecos
- 70 Edwards Plateau
- 81 South Central
- 82 Coaster Bend
- 90 Upper Coast
- 96 South
- 97 Lower Valley

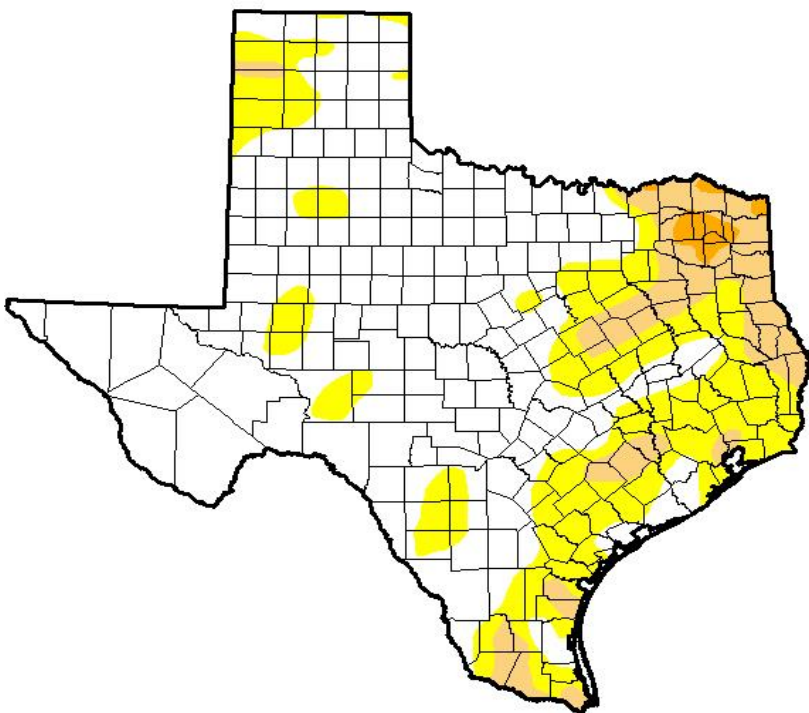


Seven Day Observed Regional Precipitation, October 30, 2016



Source: National Weather Service, www.nws.noaa.gov

Drought Monitor, Valid October 25, 2016



Drought Conditions (Percent Area)

	None	D0-D4	D1-D4	D2-D4	D3-D4	D4
Current	64.92	35.08	10.84	1.10	0.00	0.00
Last Week <i>10/18/2016</i>	70.53	29.47	5.91	0.00	0.00	0.00
3 Months Ago <i>7/26/2016</i>	63.03	36.97	5.89	0.18	0.00	0.00
Start of Calendar Year <i>12/29/2015</i>	95.48	4.52	0.00	0.00	0.00	0.00
Start of Water Year <i>9/27/2016</i>	94.83	5.17	0.62	0.00	0.00	0.00
One Year Ago <i>10/27/2015</i>	56.34	43.66	15.67	2.85	0.00	0.00

Intensity:

- D0 Abnormally Dry
- D1 Moderate Drought
- D2 Severe Drought
- D3 Extreme Drought
- D4 Exceptional Drought

The Drought Monitor focuses on broad-scale conditions. Local conditions may vary. See accompanying text summary for forecast statements.

Author:

David Simeral
Western Regional Climate Center



Source: National Drought Mitigation Center, a partnership with USDA, U.S. Department of Commerce/NOAA, <http://droughtmonitor.unl.edu>