



Texas Crop Progress and Condition

Southern Plains Regional Field Office
Post Office Box 70 Austin, Texas 78767
(800) 626-3142 · FAX (855) 270-2725 · www.nass.usda.gov/tx

Issue: TX-CW4316

Weekly Summary for Oct 31 - Nov 6

Released: November 7, 2016

Significant rainfall was received in many areas of the state with parts of the Low Plains, Blacklands, and the Cross Timbers recording up to 6 inches for the week. Areas of South Texas, South Central Texas, and the Trans Pecos received up to 3 inches of rainfall. Totals across other areas of the state ranged from 0.25 of an inch up to 2 inches.

Small Grains: Small grain seeding continued throughout the state. In areas of South Texas, wheat and oat fields were emerging. Preparations were underway to turn cattle out on wheat pasture for winter grazing in areas of the Low Plains and the Cross Timbers. In the Blacklands and Northeast Texas, wheat seeding progressed well, but was delayed in areas of the Edwards Plateau due to wet conditions.

Crop Progress

Stage	Percent of Acreage			
	Current Week	Previous Week	Previous Year	5 Year Average
Corn				
Harvested	95	90	86	94
Cotton				
Bolls Opening	96	93	98	96
Harvested	39	30	49	51
Peanuts				
Harvested	65	57	63	76
Sorghum				
Mature	96	94	96	95
Harvested	83	80	85	83
Soybeans				
Harvested	85	80	85	84
Sunflowers				
Harvested	81	72	86	81
Winter Wheat				
Planted	85	75	75	84
Emerged	71	56	58	64
Oats				
Planted	85	75	81	85
Emerged	59	30	46	58

Row Crops: Corn harvest was complete in most areas, while late fields were being harvested in the Northern High Plains. Cotton harvest continued across the state. In the High Plains, cotton harvest was in full swing and picking up in the Low Plains. In areas of the Blacklands, soybean harvest was wrapping up. Sorghum harvest continued in the Northern High Plains and peanut harvest was in full swing in areas of South Texas.

Fruit, Vegetable and Specialty Crop Report: In the Lower Valley, fall vegetable crops were being irrigated and tomatoes and onions were progressing well. Cabbage harvest was delayed in areas of South Texas due to heavy precipitation, pecan harvest was nearing completion, and spinach progressed well. Pecan harvest was active in areas of the Cross Timbers, Blacklands, and South Central Texas. In the Edwards Plateau, spinach, cabbage, and lettuce crops benefitted from recent rainfall.

Livestock, Range and Pasture Report: Most pastures across the state had adequate moisture and livestock were in good condition. Some producers were still trying to get a last cutting of hay, as weather permitted. Many stock tanks and ponds were in need of runoff water. Stock tanks were full in some areas of the Blacklands and pond levels were declining in Northeast Texas.

Crop Condition

Crop	Percent of Acreage					Index ¹	
	Excellent	Good	Fair	Poor	Very Poor	2016	2015
Corn	11	44	31	11	3	73	75
Cotton	8	38	35	15	4	68	67
Peanuts	17	42	35	6	0	79	81
Sorghum	15	40	35	8	2	76	80
Soybeans	6	36	43	11	4	68	62
Winter Wheat	4	35	46	12	3	67	73
Range and Pasture	6	35	40	14	5	--	--

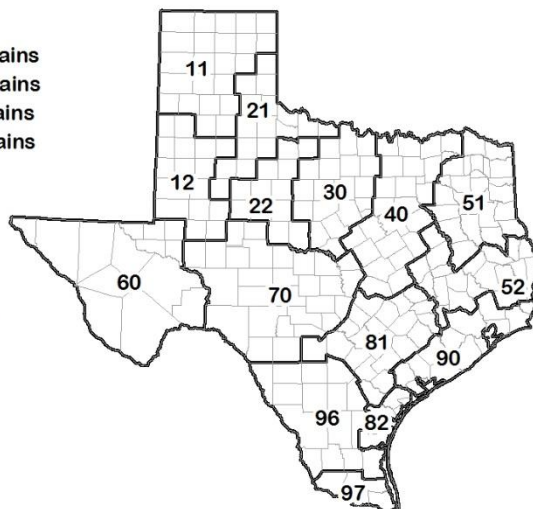
¹ The formula for the condition index is $I = (5V + 25P + 60F + 90G + 110E)/100$ where I = crop condition index and V, P, F, G, E = percentage of crop rated very poor, poor, fair, good, excellent.

Soil Moisture and Days Suitable by District

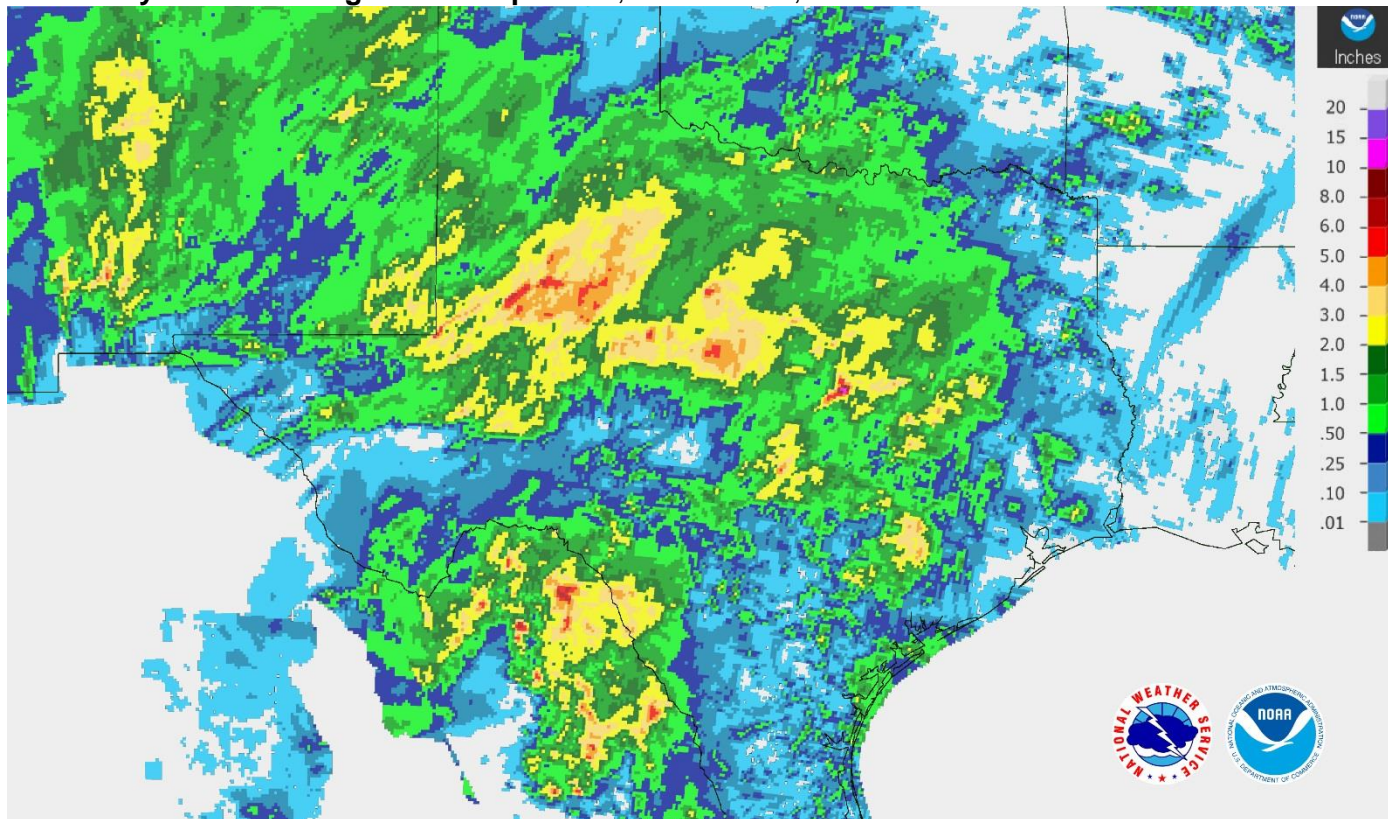
District	Topsoil Moisture Condition by District				Subsoil Moisture Condition by District				Days Suitable for Fieldwork
	Percentage of Acreage				Percentage of Acreage				
	Very Short	Short	Adequate	Surplus	Very Short	Short	Adequate	Surplus	
11	19	31	49	1	10	40	47	3	5.6
12	3	32	50	15	4	32	59	5	4.0
21	0	14	78	8	0	23	67	10	6.0
22	0	23	72	5	2	15	72	11	4.9
30	2	9	70	19	4	10	78	8	4.7
40	16	30	52	2	12	36	45	7	5.3
51	17	48	35	0	16	56	25	3	6.9
52	7	33	39	21	6	34	49	11	6.3
60	21	28	51	0	21	31	48	0	6.8
70	7	21	67	5	5	23	69	3	5.5
81	3	47	44	6	3	40	55	2	5.4
82	4	35	61	0	6	40	51	3	6.6
90	10	35	52	3	8	20	68	4	5.4
96	22	29	49	0	23	21	56	0	6.6
97	47	26	27	0	21	51	28	0	5.4
State	11	30	53	6	8	32	55	5	5.3

Texas Agricultural Districts

- 11 Northern High Plains
- 12 Southern High Plains
- 21 Northern Low Plains
- 22 Southern Low Plains
- 30 Cross Timbers
- 40 Blacklands
- 51 North East
- 52 South East
- 60 Trans-Pecos
- 70 Edwards Plateau
- 81 South Central
- 82 Coaster Bend
- 90 Upper Coast
- 96 South
- 97 Lower Valley

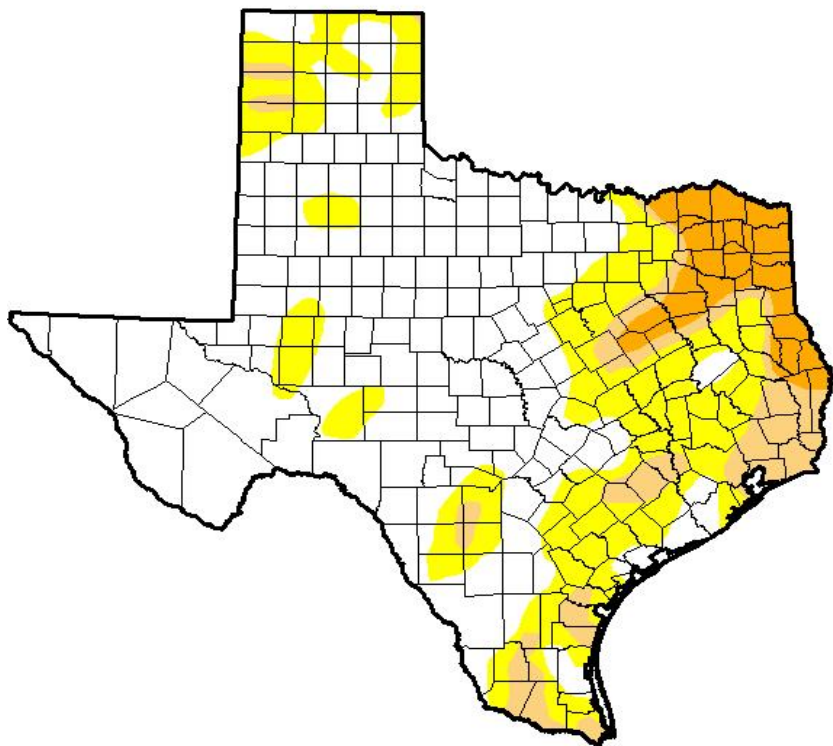


Seven Day Observed Regional Precipitation, November 6, 2016



Source: National Weather Service, www.nws.noaa.gov

Drought Monitor, Valid November 1, 2016



Drought Conditions (Percent Area)

	None	D0-D4	D1-D4	D2-D4	D3-D4	D4
Current	59.55	40.45	14.87	6.50	0.00	0.00
Last Week <i>10/25/2016</i>	64.92	35.08	10.84	1.10	0.00	0.00
3 Months Ago <i>8/2/2016</i>	65.35	34.65	5.83	0.64	0.00	0.00
Start of Calendar Year <i>1/2/2016</i>	95.48	4.52	0.00	0.00	0.00	0.00
Start of Water Year <i>9/27/2015</i>	94.83	5.17	0.62	0.00	0.00	0.00
One Year Ago <i>11/3/2015</i>	78.47	21.53	4.27	0.00	0.00	0.00

Intensity:

- D0 Abnormally Dry
- D1 Moderate Drought
- D2 Severe Drought
- D3 Extreme Drought
- D4 Exceptional Drought

The Drought Monitor focuses on broad-scale conditions. Local conditions may vary. See accompanying text summary for forecast statements.

Author:
Deborah Bathke
National Drought Mitigation Center



Source: National Drought Mitigation Center, a partnership with USDA, U.S. Department of Commerce/NOAA, <http://droughtmonitor.unl.edu>