



Texas Crop Progress and Condition

Southern Plains Regional Field Office
Post Office Box 70 Austin, Texas 78767
(800) 626-3142 · FAX (855) 270-2725 · www.nass.usda.gov/tx

Issue: TX-CW4416

Weekly Summary for Nov 7 - 13

Released: November 14, 2016

Many areas of the state received significant rainfall last week, with areas of the Upper Coast and the Lower Valley recording up to 6 inches. Areas of the Edwards Plateau, Blacklands, and the Cross Timbers received up to 3 inches of rainfall. The Low Plains, South Texas, and South Central experienced between 1 to 2 inches, while the rest of the state observed scattered showers.

Small Grains: Seeding of winter wheat continued throughout the state last week, while oats seeding was wrapping up in many areas. Winter wheat and oats responded well to the recent rainfall with conditions rated mostly fair to good. Some producers released cattle to graze on winter small grain fields in areas of the Blacklands and the Edwards Plateau.

Crop Progress

Stage	Percent of Acreage			
	Current Week	Previous Week	Previous Year	5 Year Average
Cotton				
Harvested	41	39	55	61
Peanuts				
Harvested	78	65	77	87
Sorghum				
Harvested	87	83	89	87
Soybeans				
Harvested	86	85	86	88
Sunflowers				
Harvested	85	81	87	85
Winter Wheat				
Planted	88	85	80	88
Emerged	72	71	69	70
Oats				
Planted	89	85	87	89
Emerged	75	59	61	66

Row Crops: In the Northern High Plains, producers were still harvesting some late corn and remaining sorghum acres. Peanut harvest had slowed due to damp field conditions in areas of the Southern High Plains and South Texas. In the Southern Plains, cotton harvest was also delayed, while in the Blacklands, harvest made good progress.

Fruit, Vegetable and Specialty Crops: Pecan harvest was delayed in areas of South Central Texas due to wet conditions. In South Texas, cabbage and spinach harvest was delayed by recent rains. Spinach and onion crops made good progress due to favorable growing conditions. Fall vegetables continued to mature in the Lower Valley.

Livestock, Range and Pasture: Rainfall and mild temperatures aided pasture growth in many parts of the state. Cool-season grasses were beginning to emerge and some small grains were ready to be grazed out. Livestock were reported to be in mostly good condition with some supplemental feeding taking place.

Crop Condition

Crop	Percent of Acreage					Index ¹	
	Excellent	Good	Fair	Poor	Very Poor	2016	2015
Cotton	9	35	35	17	4	67	67
Peanuts	17	42	35	6	0	79	81
Sorghum	15	40	35	8	2	76	80
Soybeans	6	36	43	11	4	68	62
Wheat	5	38	42	12	3	68	73
Oats	7	35	40	10	8	66	62
Range and Pasture	6	36	39	14	5	--	--

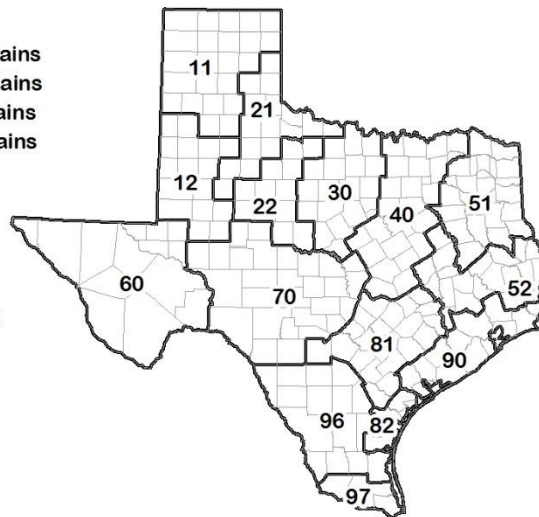
¹ The formula for the condition index is $I = (5V + 25P + 60F + 90G + 110E)/100$ where I = crop condition index and V, P, F, G, E = percentage of crop rated very poor, poor, fair, good, excellent.

Soil Moisture and Days Suitable by District

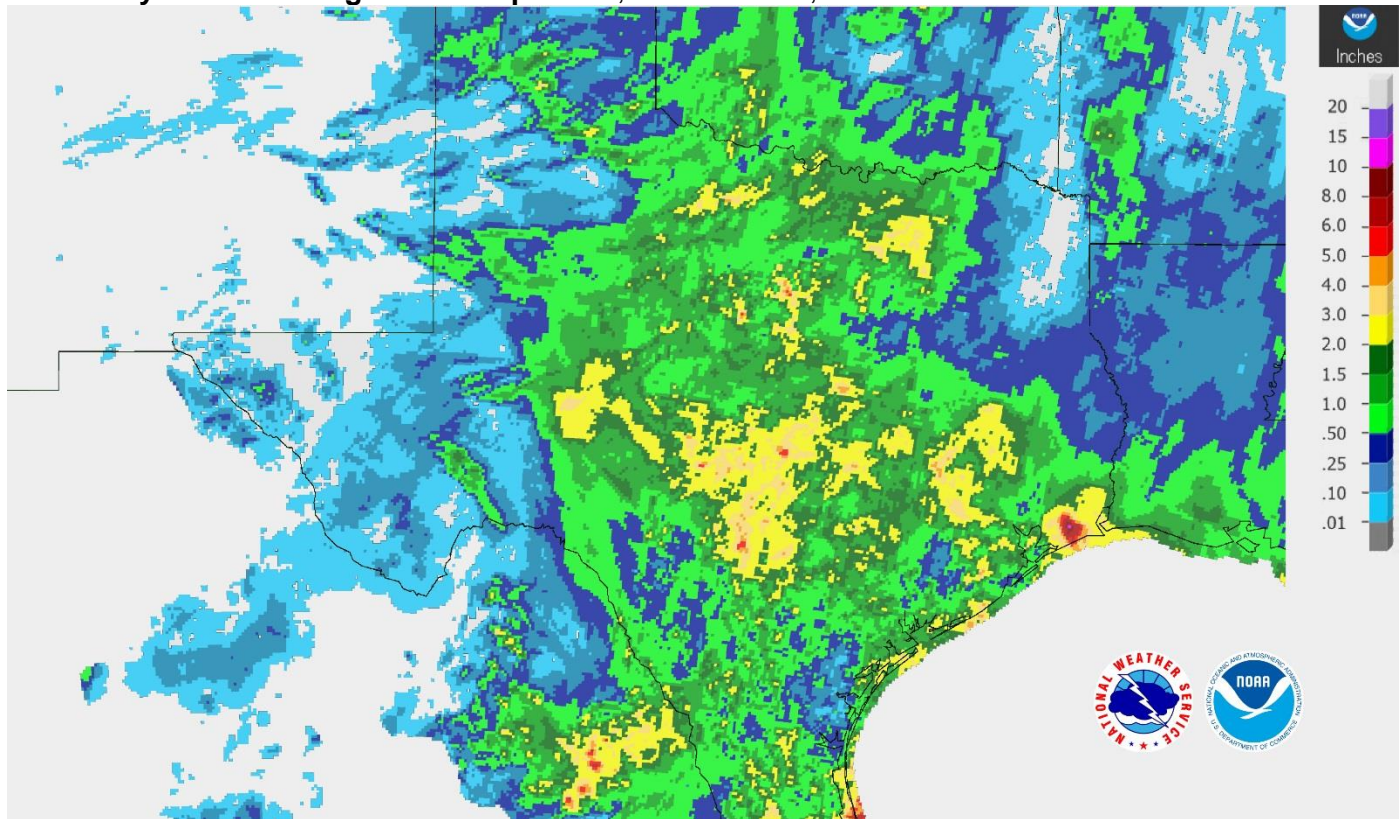
District	Topsoil Moisture Condition by District				Subsoil Moisture Condition by District				Days Suitable for Fieldwork
	Percentage of Acreage				Percentage of Acreage				
	Very Short	Short	Adequate	Surplus	Very Short	Short	Adequate	Surplus	
11	20	36	44	0	10	40	47	3	6.5
12	10	15	56	19	11	26	50	13	4.6
21	0	16	78	6	0	14	78	8	3.9
22	0	2	87	11	2	5	84	9	2.3
30	2	5	74	19	3	9	79	9	3.7
40	1	23	66	10	1	26	62	11	3.3
51	17	49	34	0	16	54	27	3	6.9
52	5	29	30	36	4	28	34	34	4.0
60	21	28	51	0	22	29	49	0	6.1
70	7	14	67	12	5	17	69	9	2.9
81	1	26	68	5	2	29	68	1	5.4
82	0	39	57	4	5	45	44	6	6.0
90	6	38	52	4	8	21	67	4	6.2
96	1	18	80	1	17	23	60	0	3.1
97	47	14	39	0	0	59	41	0	5.7
State	9	23	59	9	7	28	58	7	4.8

Texas Agricultural Districts

- 11 Northern High Plains
- 12 Southern High Plains
- 21 Northern Low Plains
- 22 Southern Low Plains
- 30 Cross Timbers
- 40 Blacklands
- 51 North East
- 52 South East
- 60 Trans-Pecos
- 70 Edwards Plateau
- 81 South Central
- 82 Coaster Bend
- 90 Upper Coast
- 96 South
- 97 Lower Valley

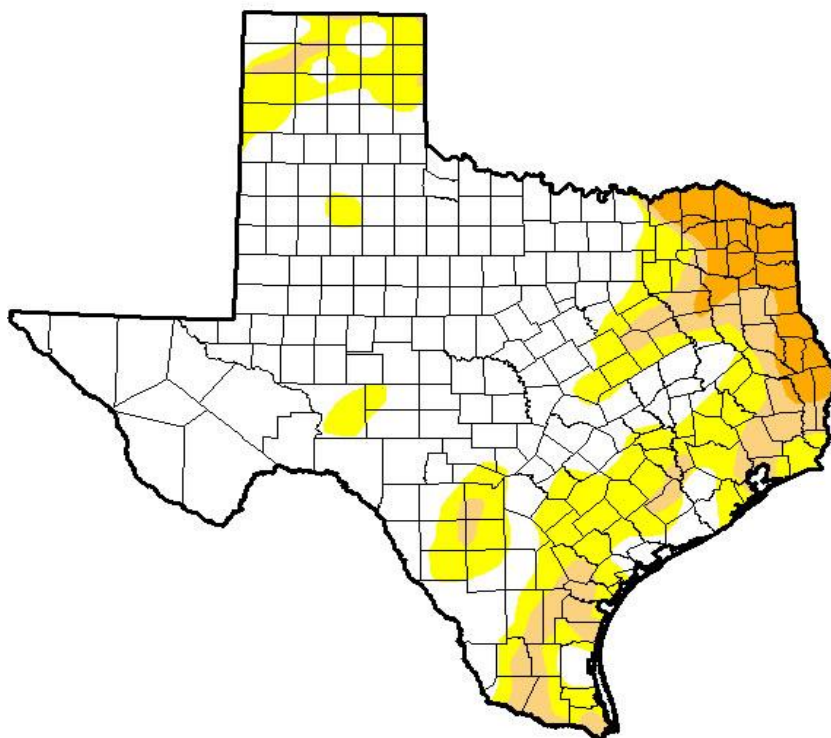


Seven Day Observed Regional Precipitation, November 13, 2016



Source: National Weather Service, www.nws.noaa.gov

Drought Monitor, Valid November 8, 2016



Drought Conditions (Percent Area)

	None	D0-D4	D1-D4	D2-D4	D3-D4	D4
Current	64.99	35.01	14.03	5.55	0.00	0.00
Last Week <i>11/1/2016</i>	59.55	40.45	14.87	6.50	0.00	0.00
3 Months Ago <i>8/9/2016</i>	55.83	44.17	10.16	0.93	0.00	0.00
Start of Calendar Year <i>12/29/2015</i>	95.48	4.52	0.00	0.00	0.00	0.00
Start of Water Year <i>9/27/2016</i>	94.83	5.17	0.62	0.00	0.00	0.00
One Year Ago <i>11/10/2015</i>	90.15	9.85	0.61	0.00	0.00	0.00

Intensity:

- D0 Abnormally Dry
- D1 Moderate Drought
- D2 Severe Drought
- D3 Extreme Drought
- D4 Exceptional Drought

The Drought Monitor focuses on broad-scale conditions. Local conditions may vary. See accompanying text summary for forecast statements.

Author:

Deborah Bathke
National Drought Mitigation Center



Source: National Drought Mitigation Center, a partnership with USDA, U.S. Department of Commerce/NOAA, <http://droughtmonitor.unl.edu>