



Texas Crop Progress and Condition

Southern Plains Regional Field Office
Post Office Box 70 Austin, Texas 78767
(800) 626-3142 · FAX (855) 270-2725 · www.nass.usda.gov/tx

Issue: TX-CW4516

Weekly Summary for Nov 14 - Nov 20

Released: November 21, 2016

Dry weather conditions prevailed across much of the state last week. Areas of Southeast Texas, South Central Texas, the Upper Coast, and the Lower Valley recorded between 1 to 3 inches of rainfall. Portions of the Blacklands and Southeast Texas received scattered showers with isolated areas receiving up to 0.5 of an inch. Other areas received little or no precipitation.

Small Grains: Seeding of winter wheat continued throughout the state last week, following row crop harvest, while oats seeding was wrapping up in most areas. Dry weather was negatively impacting recently-emerged small grains and rainfall was needed to sustain crop development. Producers released grazing cattle on small grain fields in areas of the Plains.

Crop Progress				
Stage	Percent of Acreage			
	Current Week	Previous Week	Previous Year	5 Year Average
Cotton				
Harvested	47	41	59	68
Peanuts				
Harvested	81	78	84	92
Sorghum				
Harvested	91	87	91	90
Soybeans				
Harvested	90	86	88	91
Sunflowers				
Harvested	87	85	89	87
Winter Wheat				
Planted	91	88	83	91
Emerged	79	72	74	76
Oats				
Planted	91	89	89	91
Emerged	81	75	66	71

Row Crops: Harvest of row crops was in its final stages in most parts of the state. Corn and sunflower harvest had wrapped up around the state. Cotton harvest continued in areas of the Plains, Blacklands, and the Edwards Plateau. Peanut harvest continued in areas of South Texas.

Fruit, Vegetable and Specialty Crop Report: Onions and carrots made good progress last week in areas of South Texas. Dry conditions allowed harvest activities to take place for harvest of cabbage, fresh market spinach, and spinach for processing. In the Lower Valley, sugarcane, vegetable and citrus harvest continued, and fall vegetable crops progressed. Pecan harvest was underway in areas of the Cross Timbers and Blacklands.

Livestock, Range and Pasture Report: Livestock were in good condition heading into the winter grazing season. Range and pasture remained in good condition in many areas of the state. Hay was being cut in the Cross Timbers, South Texas, and the Lower Valley.

Crop Condition

Crop	Percent of Acreage					Index ¹	
	Excellent	Good	Fair	Poor	Very Poor	2016	2015
Cotton	9	35	34	17	5	66	67
Peanuts	17	42	35	6	0	79	81
Sorghum	15	40	35	8	2	76	76
Soybeans	6	36	43	11	4	68	62
Winter Wheat	7	34	41	14	4	67	76
Oats	7	31	44	10	8	65	66
Range and Pasture	5	35	41	14	5	--	--

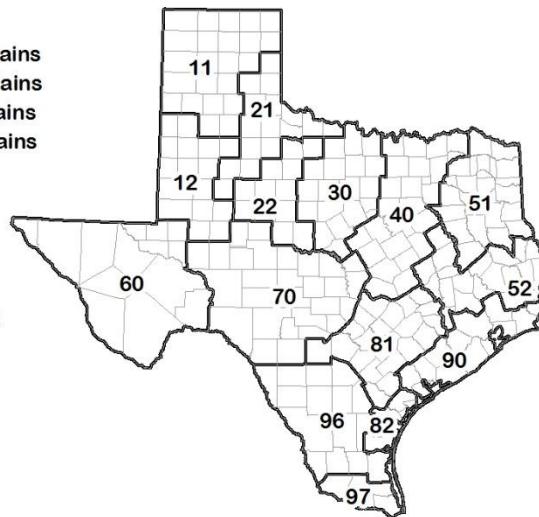
¹ The formula for the condition index is $I = (5V + 25P + 60F + 90G + 110E)/100$ where I = crop condition index and V, P, F, G, E = percentage of crop rated very poor, poor, fair, good, excellent.

Soil Moisture and Days Suitable by District

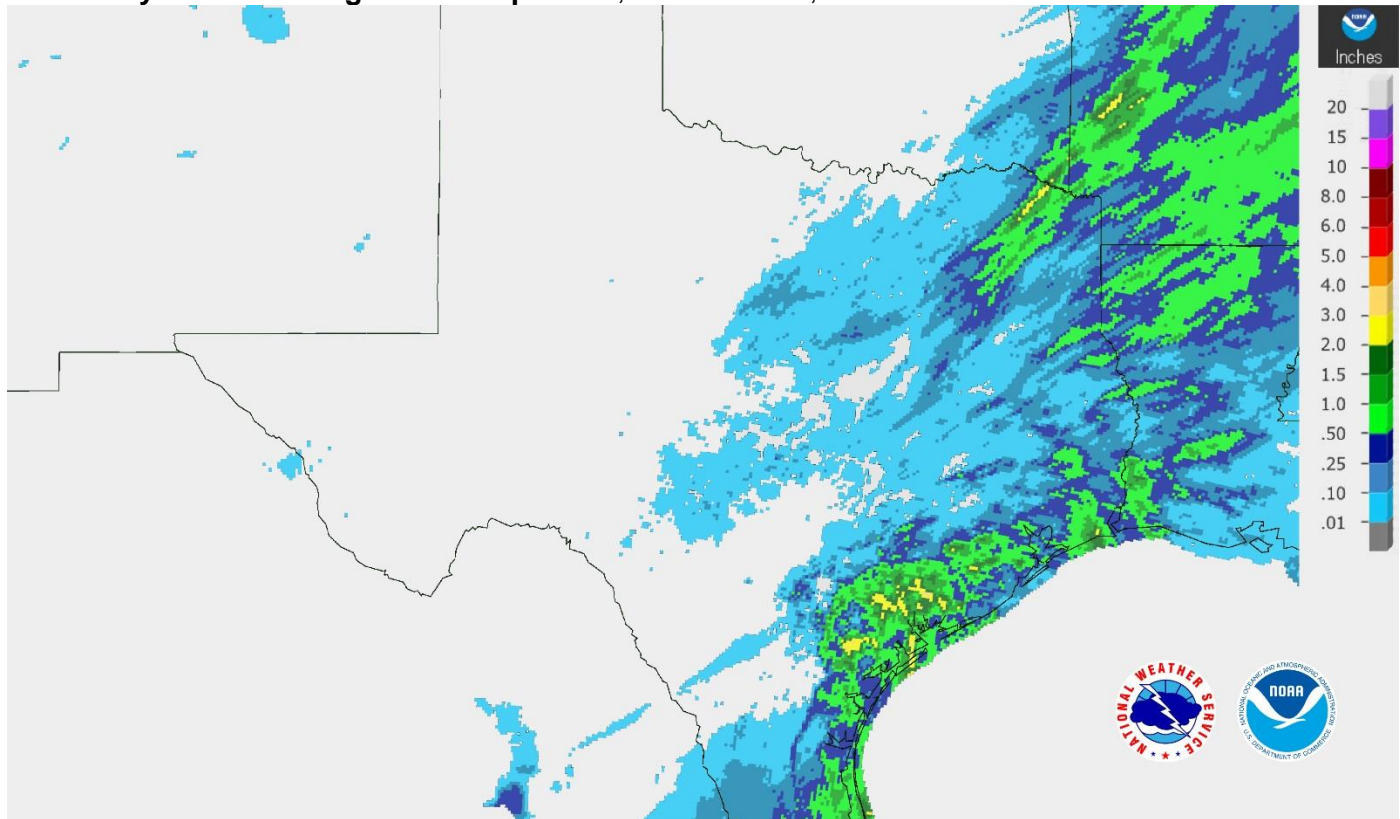
District	Topsoil Moisture Condition by District				Subsoil Moisture Condition by District				Days Suitable for Fieldwork
	Percentage of Acreage				Percentage of Acreage				
	Very Short	Short	Adequate	Surplus	Very Short	Short	Adequate	Surplus	
11	24	38	38	0	11	45	44	0	6.4
12	5	18	67	10	8	27	59	6	5.6
21	0	23	73	4	0	20	75	5	5.8
22	0	5	88	7	2	5	83	10	4.2
30	2	7	77	14	3	10	84	3	6.2
40	2	26	67	5	2	26	67	5	5.7
51	17	49	34	0	15	53	29	3	6.8
52	6	27	38	29	5	27	40	28	6.3
60	22	31	47	0	22	30	48	0	6.3
70	6	12	71	11	5	15	70	10	6.0
81	1	21	73	5	2	29	67	2	6.6
82	0	39	61	0	5	45	47	3	5.0
90	6	55	37	2	7	23	66	4	6.3
96	1	42	56	1	17	28	55	0	6.3
97	47	18	35	0	0	63	37	0	5.7
State	10	27	58	5	7	30	59	4	5.9

Texas Agricultural Districts

- 11 Northern High Plains
- 12 Southern High Plains
- 21 Northern Low Plains
- 22 Southern Low Plains
- 30 Cross Timbers
- 40 Blacklands
- 51 North East
- 52 South East
- 60 Trans-Pecos
- 70 Edwards Plateau
- 81 South Central
- 82 Coaster Bend
- 90 Upper Coast
- 96 South
- 97 Lower Valley

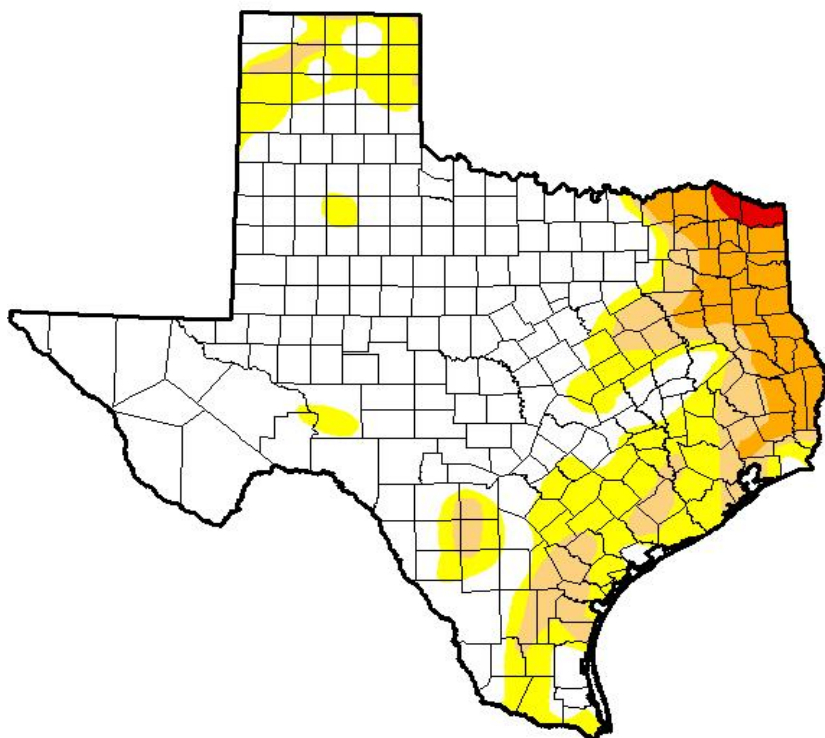


Seven Day Observed Regional Precipitation, November 20, 2016



Source: National Weather Service, www.nws.noaa.gov

Drought Monitor, Valid November 15, 2016



Drought Conditions (Percent Area)

	None	D0-D4	D1-D4	D2-D4	D3-D4	D4
Current	64.98	35.02	16.32	7.69	0.63	0.00
Last Week <i>11/8/2016</i>	64.99	35.01	14.03	5.55	0.00	0.00
3 Months Ago <i>8/16/2016</i>	71.24	28.76	5.31	0.63	0.00	0.00
Start of Calendar Year <i>12/29/2015</i>	95.48	4.52	0.00	0.00	0.00	0.00
Start of Water Year <i>9/27/2016</i>	94.83	5.17	0.62	0.00	0.00	0.00
One Year Ago <i>11/17/2015</i>	90.41	9.59	0.61	0.00	0.00	0.00

Intensity:

- D0 Abnormally Dry
- D1 Moderate Drought
- D2 Severe Drought
- D3 Extreme Drought
- D4 Exceptional Drought

The Drought Monitor focuses on broad-scale conditions. Local conditions may vary. See accompanying text summary for forecast statements.

Author:
Richard Heim
NCEI/NOAA



Source: National Drought Mitigation Center, a partnership with USDA, U.S. Department of Commerce/NOAA, <http://droughtmonitor.unl.edu>