



# Texas Crop Progress and Condition

Southern Plains Regional Field Office, Post Office Box 70 Austin, Texas 78767  
(800) 626-3142 · FAX (855) 270-2725 · www.nass.usda.gov/tx

**Issue: TX-CW0117**

**Weekly Summary for January 23-29**

**Released: January 30, 2017**

Scattered, mostly light showers were experienced in areas of the Trans-Pecos, the Plains region and North East Texas last week. Meanwhile the rest of the state experienced little to no measurable precipitation.

**Small Grains:** Winter wheat and oats continued to progress. Some fields showed signs of growth with warmer weather in areas of the High Plains. Oat producers reported slowed growth and partial damage in areas of the Cross Timbers due to cold temperatures.

Crop Progress			
Stage	Percent of Acreage		
	Current Year	Previous Year	5 Year Average
<b>Cotton</b>			
Harvested	97	97	99
<b>Winter Wheat</b>			
Emerged	93	96	96
<b>Oats</b>			
Emerged	95	99	98
<b>Pecans</b>			
Harvested	93	86	94

**Row Crops:** Statewide cotton harvest neared completion. Row crop producers in areas of the Blacklands, South Central, Upper Coast, and Lower Valley began field preparations with some pre-watering and tilling of fields.

**Fruit, Vegetable, and Specialty Crops:** Vegetables suffered damage due to late freeze in areas of South Texas. Onion planting was active in areas of North Texas. Pecan harvest neared completion in areas of the Cross Timbers, the Blacklands, and the Edwards Plateau.

**Livestock, Range, and Pasture:** Pastures continued to progress, with some conditions declining in areas of the Coastal Bend, and South Texas due to cold temperatures. Livestock producers across the state continued supplemental feeding. Feral hogs were active in area of North East Texas.

## Crop Condition

Crop	Percent of Acreage					Index <sup>1</sup>	
	Excellent	Good	Fair	Poor	Very Poor	2017	2016
Winter Wheat	5	24	44	22	5	59	72
Oats	5	29	50	11	5	65	60
Range & Pasture	4	35	41	15	5	--	--

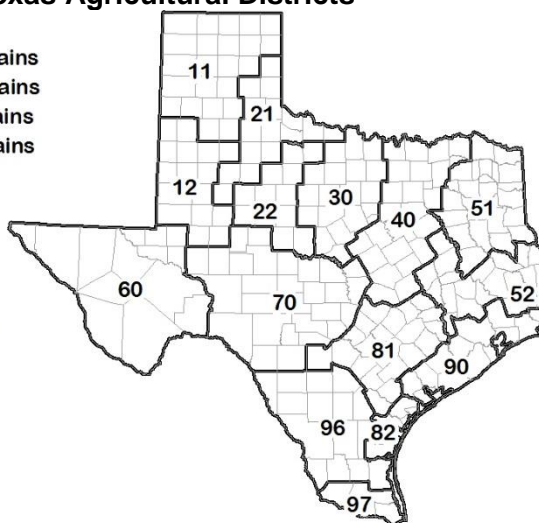
<sup>1</sup> The formula for the condition index is  $I = (5V + 25P + 60F + 90G + 110E)/100$  where I = crop condition index and V, P, F, G, E = percentage of crop rated very poor, poor, fair, good, excellent

### Soil Moisture and Days Suitable by District

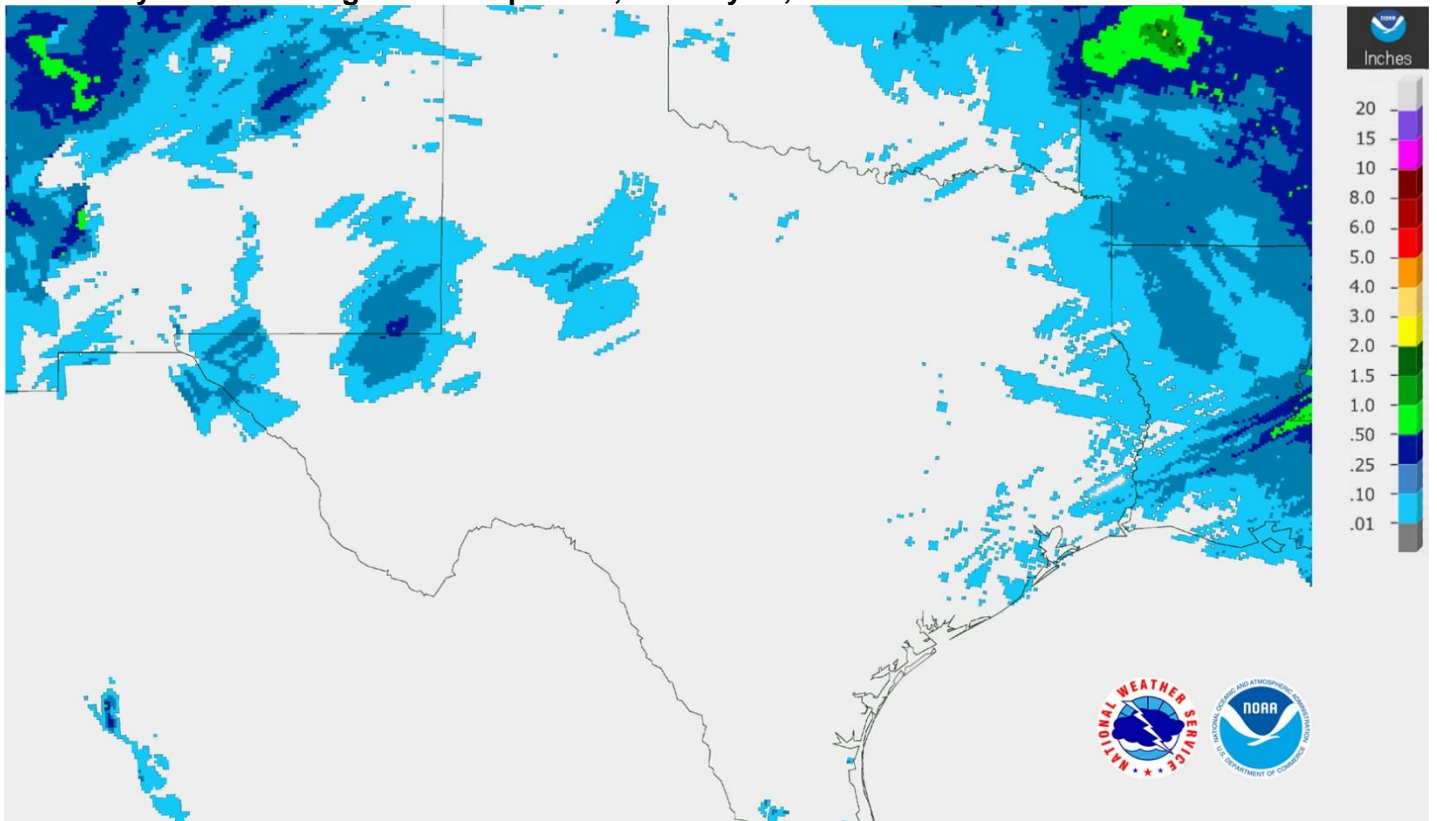
District	Topsoil Moisture Condition by District				Subsoil Moisture Condition by District				Days Suitable For Fieldwork
	Percentage of Acreage				Percentage of Acreage				
	Very Short	Short	Adequate	Surplus	Very Short	Short	Adequate	Surplus	
11	0	6	93	1	1	12	86	1	4.3
12	0	48	50	2	0	60	39	1	6.4
21	0	35	65	0	0	28	72	0	6.1
22	0	9	90	1	0	12	83	5	5.5
30	2	22	75	1	1	27	72	0	5.8
40	3	14	77	6	1	16	77	6	4.9
51	1	19	66	14	0	15	69	16	6.0
52	3	12	75	10	2	10	78	10	6.5
60	41	52	7	0	52	40	8	0	6.8
70	5	28	64	3	3	18	77	2	6.5
81	1	17	76	6	0	16	75	9	5.9
82	11	22	67	0	9	37	50	4	7.0
90	0	8	74	18	0	25	63	12	2.8
96	5	45	49	1	5	47	47	1	6.4
97	22	59	19	0	22	59	19	0	7.0
State	3	23	70	4	2	27	67	4	5.5

### Texas Agricultural Districts

- 11 Northern High Plains
- 12 Southern High Plains
- 21 Northern Low Plains
- 22 Southern Low Plains
- 30 Cross Timbers
- 40 Blacklands
- 51 North East
- 52 South East
- 60 Trans-Pecos
- 70 Edwards Plateau
- 81 South Central
- 82 Coaster Bend
- 90 Upper Coast
- 96 South
- 97 Lower Valley

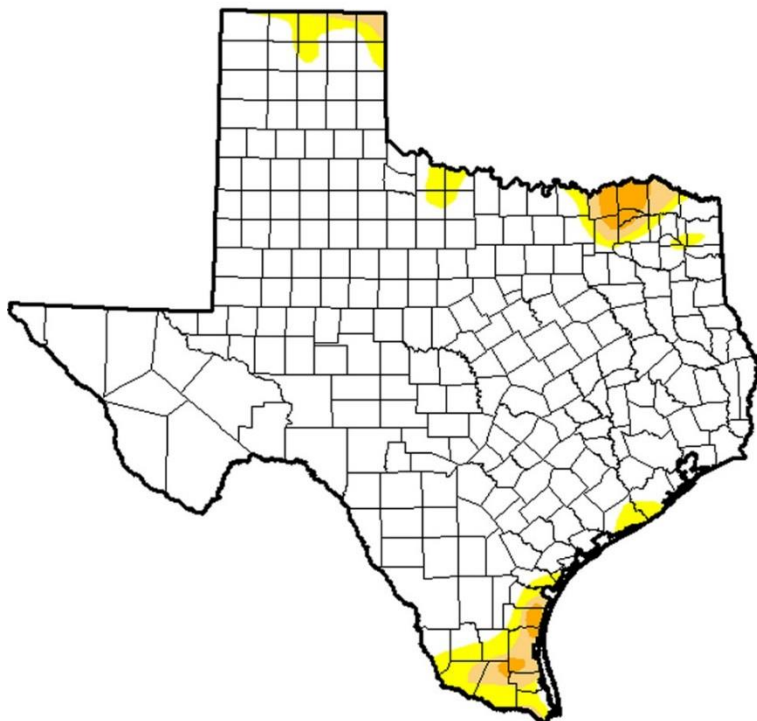


## Seven Day Observed Regional Precipitation, January 30, 2017



Source: National Weather Service, [www.nws.noaa.gov](http://www.nws.noaa.gov)

## Drought Monitor, Valid January 24, 2017



Drought Conditions (Percent Area)

	None	D0-D4	D1-D4	D2-D4	D3-D4	D4
<b>Current</b>	92.24	7.76	3.19	1.08	0.01	0.00
<b>Last Week</b> 1/17/2017	82.78	17.22	4.01	0.94	0.15	0.00
<b>3 Months Ago</b> 10/25/2016	64.92	35.08	10.84	1.10	0.00	0.00
<b>Start of Calendar Year</b> 1/3/2017	81.50	18.50	6.29	1.97	0.04	0.00
<b>Start of Water Year</b> 9/27/2016	94.83	5.17	0.62	0.00	0.00	0.00
<b>One Year Ago</b> 1/26/2016	98.05	1.95	0.00	0.00	0.00	0.00

**Intensity:**

- D0 Abnormally Dry
- D1 Moderate Drought
- D2 Severe Drought
- D3 Extreme Drought
- D4 Exceptional Drought

The Drought Monitor focuses on broad-scale conditions. Local conditions may vary. See accompanying text summary for forecast statements.

**Author:**

Richard Tinker  
CPC/NOAA/NWS/NCEP



Source: National Drought Mitigation Center, a partnership with USDA, U.S. Department of Commerce/NOAA, <http://droughtmonitor.unl.edu>

## Texas Crop Progress and Condition (January 2017)

USDA, National Agricultural Statistics Service, Southern Plains Regional Field Office