



Texas Crop Progress and Condition

Southern Plains Regional Field Office
Post Office Box 70 Austin, Texas 78767
(800) 626-3142 · FAX (855) 270-2725 · www.nass.usda.gov/tx

Issue: TX-CW0217

Weekly Summary for January 30 - February 5

Released: February 6, 2017

Crop Progress

Stage	Percent of Acreage			
	Current Week	Previous Week	Previous Year	5 Year Average
Cotton				
Harvested	98	97	98	99
Pecans				
Harvested	94	93	89	96
Winter Wheat				
Emerged	94	93	98	97
Oats				
Emerged	99	95	100	99

The state experienced little to no measurable rainfall last week. Light showers were experienced in areas of North East Texas and the Coastal Bend, with isolated areas in the Upper Coast, South Texas, and the Lower Valley receiving upwards of 0.5 of an inch of rainfall.

Small Grains: Winter wheat was in fair condition across much of the state. Wheat and oat crops emerged and irrigation systems were active in areas of the Southern High Plains and South Texas. In the Blacklands and North East Texas, producers were beginning to top dress in anticipation of spring growth.

Row Crops: Cotton harvest was nearing completion in the High Plains. Field preparations for corn continued in the Blacklands, South Central, South Texas, and the Lower Valley.

Fruit, Vegetable and Specialty Crops: Preparation for planting of tomatoes and onions was underway in the Lower Valley. In the Cross Timbers and Northeast Texas, growers were concerned about the lack of chilling hours for fruit trees.

Livestock, Range and Pasture: Supplemental feeding continued across much of the state. Pasture quality deteriorated in the Coastal Bend from the freeze, while South Texas pastures suffered from a lack of rainfall. Warm weather helped growth in the Northern Low Plains and South East Texas.

Crop Condition

Crop	Percent of Acreage					Index ¹	
	Excellent	Good	Fair	Poor	Very Poor	2017	2016
Wheat	5	26	43	22	4	60	70
Oats	4	28	51	11	6	63	60
Range and Pasture	4	35	39	17	5	--	--

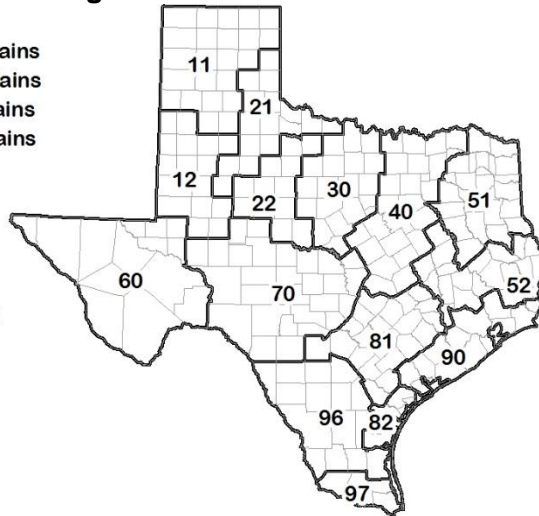
¹ The formula for the condition index is $I = (5V + 25P + 60F + 90G + 110E)/100$ where I = crop condition index and V, P, F, G, E = percentage of crop rated very poor, poor, fair, good, excellent.

Soil Moisture and Days Suitable by District

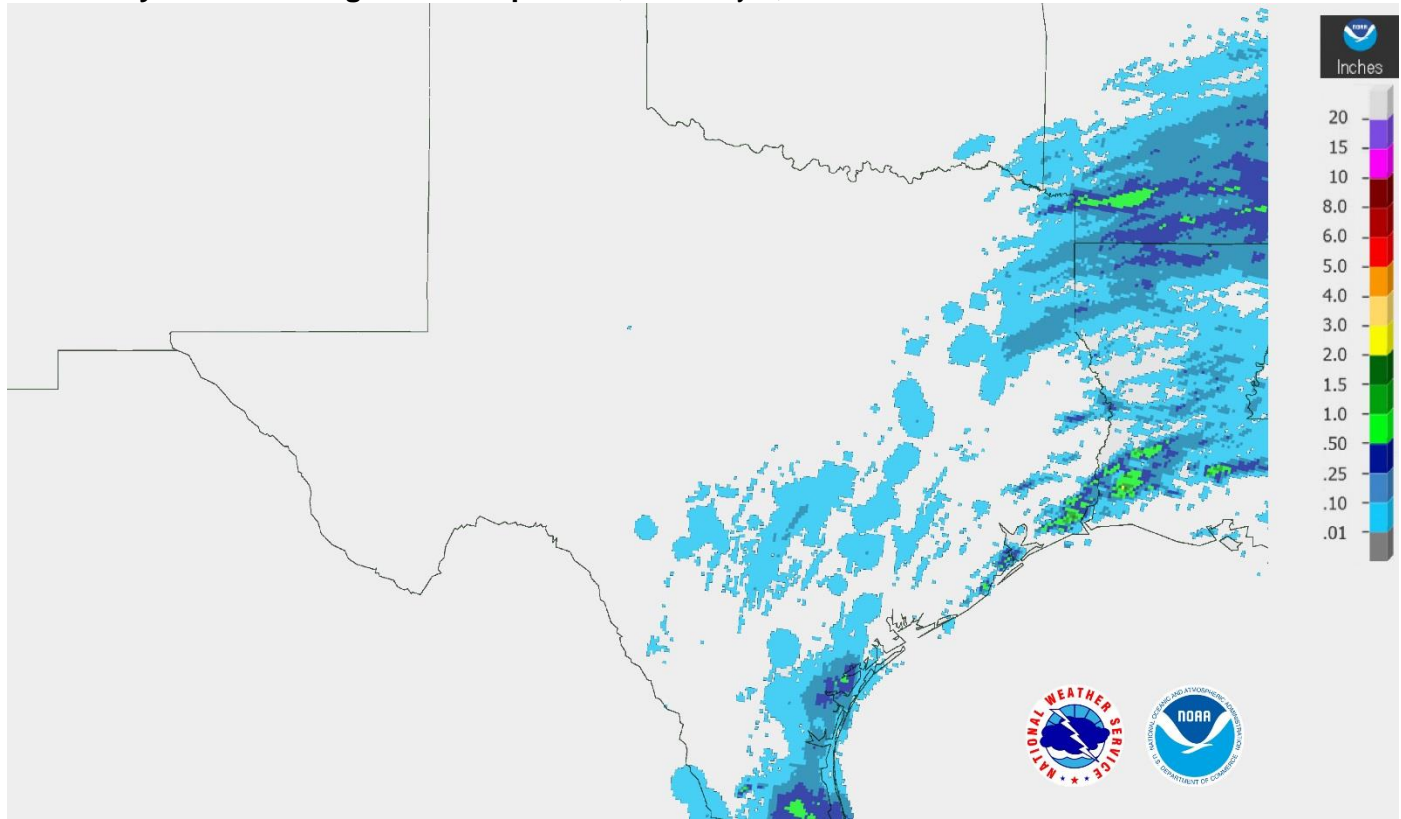
District	Topsoil Moisture Condition by District				Subsoil Moisture Condition by District				Days Suitable for Fieldwork
	Percentage of Acreage				Percentage of Acreage				
	Very Short	Short	Adequate	Surplus	Very Short	Short	Adequate	Surplus	
11	3	10	86	1	4	13	82	1	6.0
12	6	54	39	1	0	55	44	1	7.0
21	2	33	64	1	2	25	72	1	6.8
22	0	16	81	3	0	17	77	6	6.1
30	2	29	68	1	2	22	74	2	6.4
40	5	30	61	4	1	18	77	4	6.6
51	3	23	63	11	0	18	67	15	6.4
52	2	15	77	6	1	9	83	7	6.3
60	35	42	23	0	44	32	24	0	6.8
70	5	29	63	3	3	22	73	2	6.7
81	3	22	71	4	0	22	71	7	6.4
82	8	31	61	0	6	33	58	3	6.2
90	0	11	76	13	1	27	61	11	7.0
96	19	34	46	1	20	34	45	1	6.8
97	4	73	23	0	4	73	23	0	4.5
State	4	29	64	3	3	27	67	3	6.4

Texas Agricultural Districts

- 11 Northern High Plains
- 12 Southern High Plains
- 21 Northern Low Plains
- 22 Southern Low Plains
- 30 Cross Timbers
- 40 Blacklands
- 51 North East
- 52 South East
- 60 Trans-Pecos
- 70 Edwards Plateau
- 81 South Central
- 82 Coaster Bend
- 90 Upper Coast
- 96 South
- 97 Lower Valley

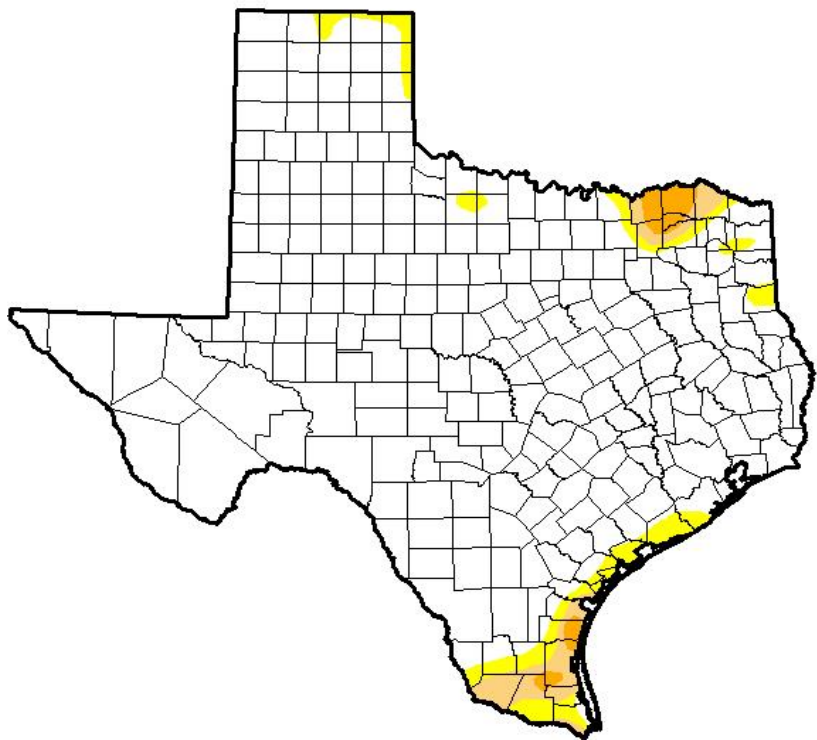


Seven Day Observed Regional Precipitation, February 5, 2017.



Source: National Weather Service, www.nws.noaa.gov

Drought Monitor, Valid January 31, 2017.



Drought Conditions (Percent Area)

	None	D0-D4	D1-D4	D2-D4	D3-D4	D4
Current	92.34	7.66	3.40	1.08	0.01	0.00
Last Week <i>1/24/2017</i>	92.24	7.76	3.19	1.08	0.01	0.00
3 Months Ago <i>11/1/2016</i>	59.55	40.45	14.87	6.50	0.00	0.00
Start of Calendar Year <i>1/3/2017</i>	81.50	18.50	6.29	1.97	0.04	0.00
Start of Water Year <i>9/27/2016</i>	94.83	5.17	0.62	0.00	0.00	0.00
One Year Ago <i>2/2/2016</i>	97.66	2.34	0.00	0.00	0.00	0.00

Intensity:

- D0 Abnormally Dry
- D1 Moderate Drought
- D2 Severe Drought
- D3 Extreme Drought
- D4 Exceptional Drought

The Drought Monitor focuses on broad-scale conditions. Local conditions may vary. See accompanying text summary for forecast statements.

Author:

David Simeral
Western Regional Climate Center



Source: National Drought Mitigation Center, a partnership with USDA, U.S. Department of Commerce/NOAA, <http://droughtmonitor.unl.edu>