



# Texas Crop Progress and Condition

Southern Plains Regional Field Office  
Post Office Box 70 Austin, Texas 78767  
(800) 626-3142 · FAX (855) 270-2725 · www.nass.usda.gov/tx

**Issue: TX-CW0317      Weekly Summary for February 6 - February 12      Released: February 13, 2017**

## Crop Progress

Stage	Percent of Acreage			
	Current Week	Previous Week	Previous Year	5 Year Average
<b>Pecans</b>				
Harvested	97	94	94	97
<b>Winter Wheat</b>				
Emerged	98	94	99	98

Warm and dry weather was experienced across many areas of Texas during the past week. The majority of the state received little to no rainfall, with East Texas recording precipitation at 0.10 of an inch.

**Small Grains:** Winter wheat was in need of moisture in areas of the Low and High Plains. Some producers in the Northern Plains began irrigating wheat. Oats progressed in areas of South Texas.

**Row Crops:** Field work in preparation for cotton planting continued in areas of the Blacklands. Corn crop preparations continued in areas of North East Texas, South Central Texas, and the Upper Coast.

**Fruit, Vegetable and Specialty Crops:** Cool season vegetable planting was active in areas of North East Texas and the Lower Valley. Onions in North East Texas and South Texas progressed. In the Lower Valley, harvest of sugarcane, citrus, and vegetables continued.

**Livestock, Range and Pasture:** Supplemental feeding was active across the state. Livestock were in good condition. Pastures in the Northern part of the state improved, while conditions continued to decline in Southern areas.

## Crop Condition

Crop	Percent of Acreage					Index <sup>1</sup>	
	Excellent	Good	Fair	Poor	Very Poor	2017	2016
Wheat	4	25	42	24	5	58	69
Oats	3	28	50	13	6	62	59
Range and Pasture	4	34	39	17	6	--	--

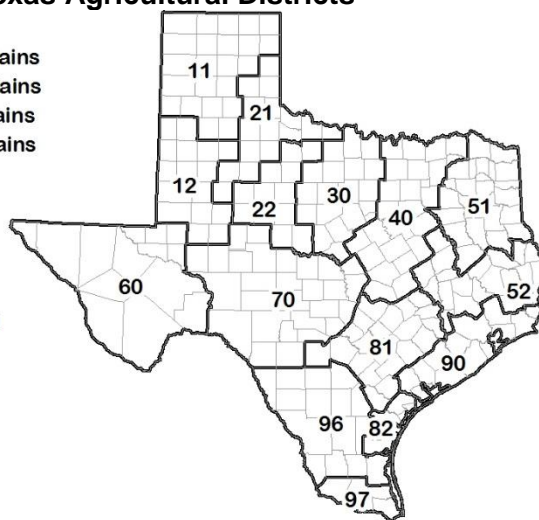
<sup>1</sup> The formula for the condition index is  $I = (5V + 25P + 60F + 90G + 110E)/100$  where I = crop condition index and V, P, F, G, E = percentage of crop rated very poor, poor, fair, good, excellent.

### Soil Moisture and Days Suitable by District

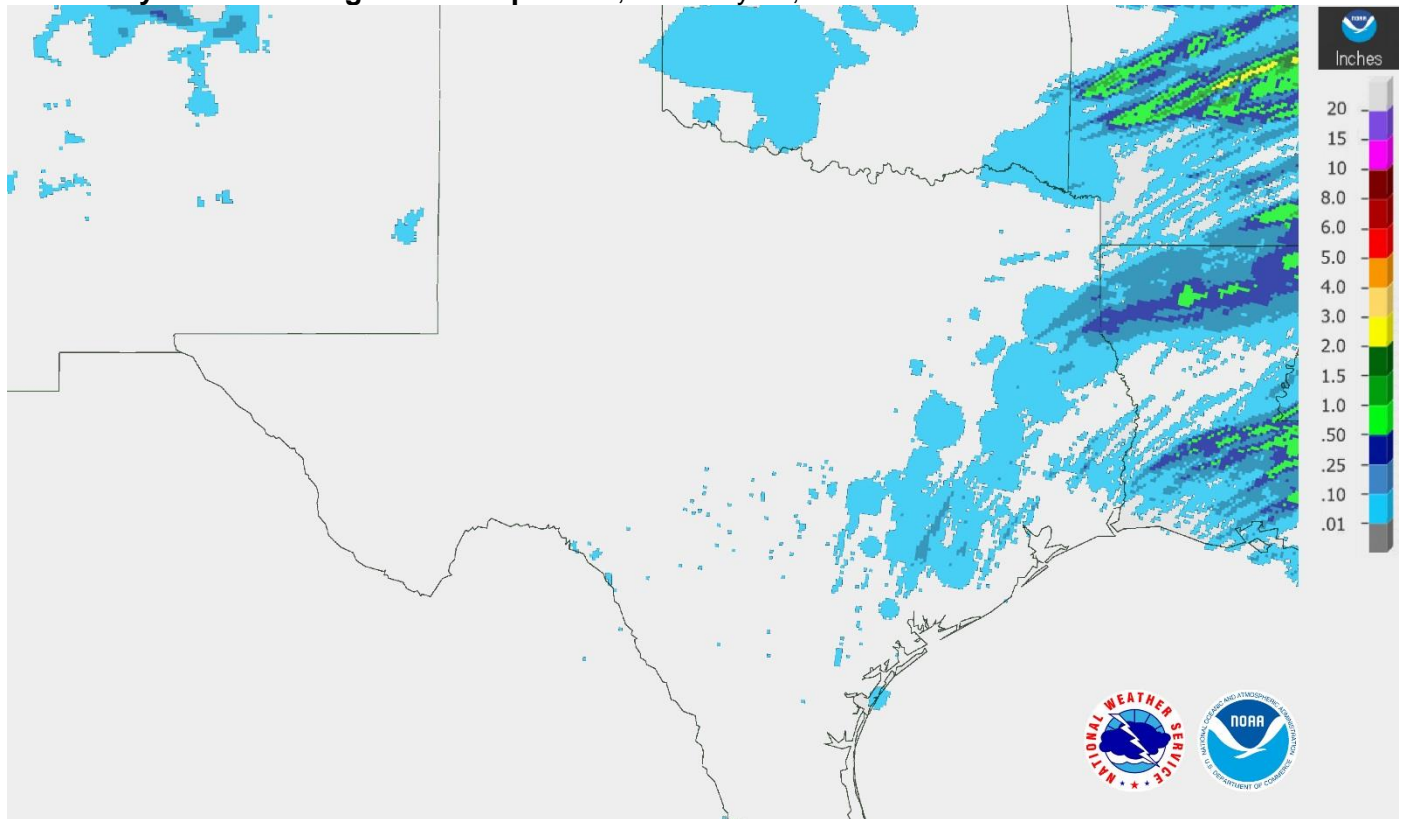
District	Topsoil Moisture Condition by District				Subsoil Moisture Condition by District				Days Suitable for Fieldwork
	Percentage of Acreage				Percentage of Acreage				
	Very Short	Short	Adequate	Surplus	Very Short	Short	Adequate	Surplus	
11	4	21	74	1	5	19	75	1	7.0
12	9	56	34	1	2	49	48	1	7.0
21	3	38	58	1	2	27	70	1	7.0
22	4	27	67	2	1	21	74	4	7.0
30	5	35	57	3	2	27	69	2	6.0
40	8	46	44	2	5	36	57	2	7.0
51	5	24	59	12	2	20	64	14	7.0
52	3	21	74	2	2	13	81	4	6.0
60	35	28	37	0	36	27	37	0	7.0
70	5	37	56	2	4	29	66	1	7.0
81	2	36	59	3	1	33	61	5	7.0
82	14	31	55	0	6	38	53	3	7.0
90	2	30	60	8	4	34	53	9	6.0
96	19	34	46	1	20	34	45	1	7.0
97	4	73	4	19	4	73	4	19	6.0
State	6	37	54	3	4	32	61	3	7.0

### Texas Agricultural Districts

- 11 Northern High Plains
- 12 Southern High Plains
- 21 Northern Low Plains
- 22 Southern Low Plains
- 30 Cross Timbers
- 40 Blacklands
- 51 North East
- 52 South East
- 60 Trans-Pecos
- 70 Edwards Plateau
- 81 South Central
- 82 Coaster Bend
- 90 Upper Coast
- 96 South
- 97 Lower Valley

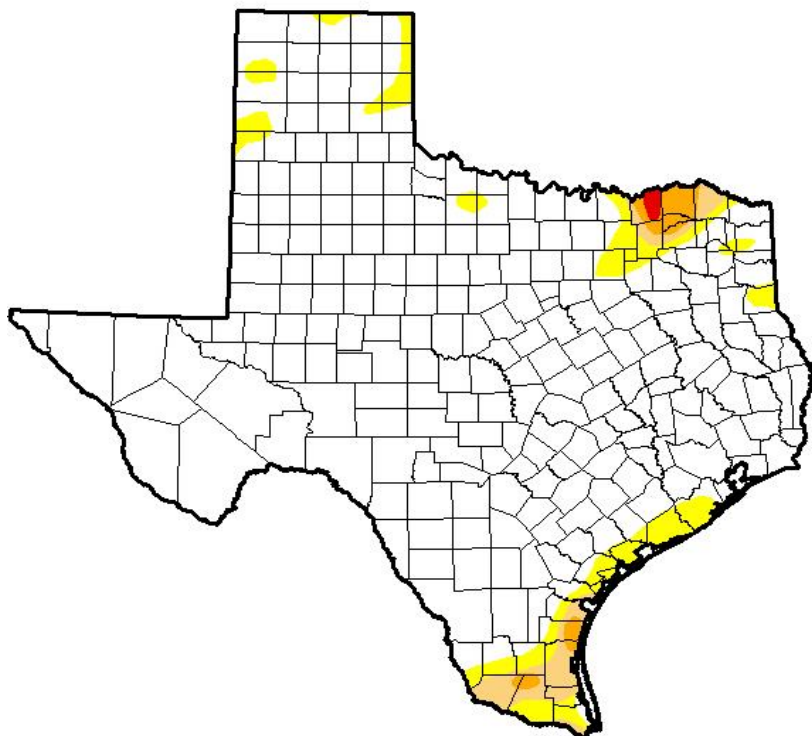


**Seven Day Observed Regional Precipitation, February 12, 2017.**



Source: National Weather Service, [www.nws.noaa.gov](http://www.nws.noaa.gov)

**Drought Monitor, Valid February 7, 2017.**



*Drought Conditions (Percent Area)*

	None	D0-D4	D1-D4	D2-D4	D3-D4	D4
<b>Current</b>	90.56	9.44	3.40	1.22	0.19	0.00
<b>Last Week</b> <i>1/31/2017</i>	92.34	7.66	3.40	1.08	0.01	0.00
<b>3 Months Ago</b> <i>11/8/2016</i>	64.99	35.01	14.03	5.55	0.00	0.00
<b>Start of Calendar Year</b> <i>1/3/2017</i>	81.50	18.50	6.29	1.97	0.04	0.00
<b>Start of Water Year</b> <i>9/27/2016</i>	94.83	5.17	0.62	0.00	0.00	0.00
<b>One Year Ago</b> <i>2/9/2016</i>	88.01	11.99	0.00	0.00	0.00	0.00

**Intensity:**

- D0 Abnormally Dry
- D1 Moderate Drought
- D2 Severe Drought
- D3 Extreme Drought
- D4 Exceptional Drought

*The Drought Monitor focuses on broad-scale conditions. Local conditions may vary. See accompanying text summary for forecast statements.*

**Author:**

David Simeral  
Western Regional Climate Center



Source: National Drought Mitigation Center, a partnership with USDA, U.S. Department of Commerce/NOAA, <http://droughtmonitor.unl.edu>