



# Texas Crop Progress and Condition

Southern Plains Regional Field Office  
Post Office Box 70 Austin, Texas 78767  
(800) 626-3142 · FAX (855) 270-2725 · www.nass.usda.gov/tx

**Issue: TX-CW0417**

**Weekly Summary for February 13 - 19**

**Released: February 21, 2017**

Weather across the state last week ranged from cool to warm and windy. The majority of the state received between 0.5 and 3.0 inches of rain. However, isolated areas between South Central and the Upper Coast received upwards of 6.0 inches of precipitation. Days suitable for field work was 4.9, two days below the previous week, primarily due to widespread precipitation.

**Small Grains:** Winter wheat was rated mostly fair to good due to the recent rains and warm weather. Oats in some areas of South Texas are in need of moisture.

**Row Crops:** Field work in preparation for cotton planting continued in areas of the Blacklands. Corn was being planted across most of the state, but was slowed in areas of the Upper Coast and the Coastal Bend due to recent rains.

**Fruit, Vegetable and Specialty Crops:** Planting of spring vegetable crops were under way in North East Texas. Producers were concerned that the lack of cold weather will affect fruit development in the Cross Timbers and North East Texas. Harvest of sugarcane, citrus, and vegetables continued in the Lower Valley.

**Livestock, Range and Pasture:** The need to provide supplemental feed has decreased, but livestock producers in the Northern Low Plains were continuing the practice. Livestock were mostly in good condition. Pastures conditions are mostly fair to good across the state, but the lack of rain in South Texas and the Lower Valley resulted in a deterioration of conditions.

## Crop Progress

Stage	Percent of Acreage			
	Current Week	Previous Week	Previous Year	5 Year Average
<b>Pecans</b> Harvested	99	97	97	99
<b>Winter Wheat</b> Emerged	99	98	100	99

## Crop Condition

Crop	Percent of Acreage					Index <sup>1</sup>	
	Excellent	Good	Fair	Poor	Very Poor	2017	2016
Wheat	5	25	45	20	5	60	68
Oats	3	28	50	13	6	62	57
Range and Pasture	4	34	39	17	6	--	--

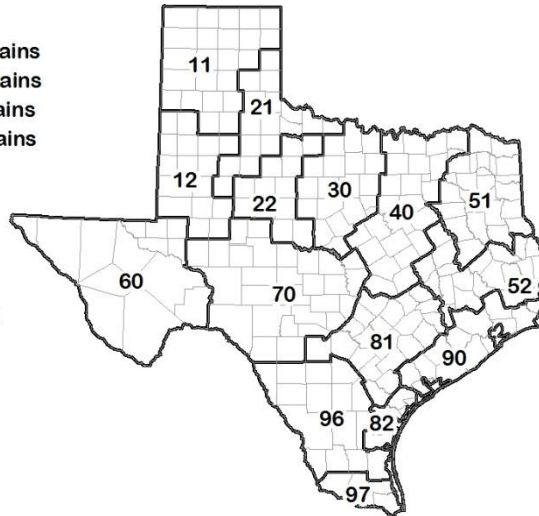
<sup>1</sup> The formula for the condition index is  $I = (5V + 25P + 60F + 90G + 110E)/100$  where I = crop condition index and V, P, F, G, E = percentage of crop rated very poor, poor, fair, good, excellent.

### Soil Moisture and Days Suitable by District

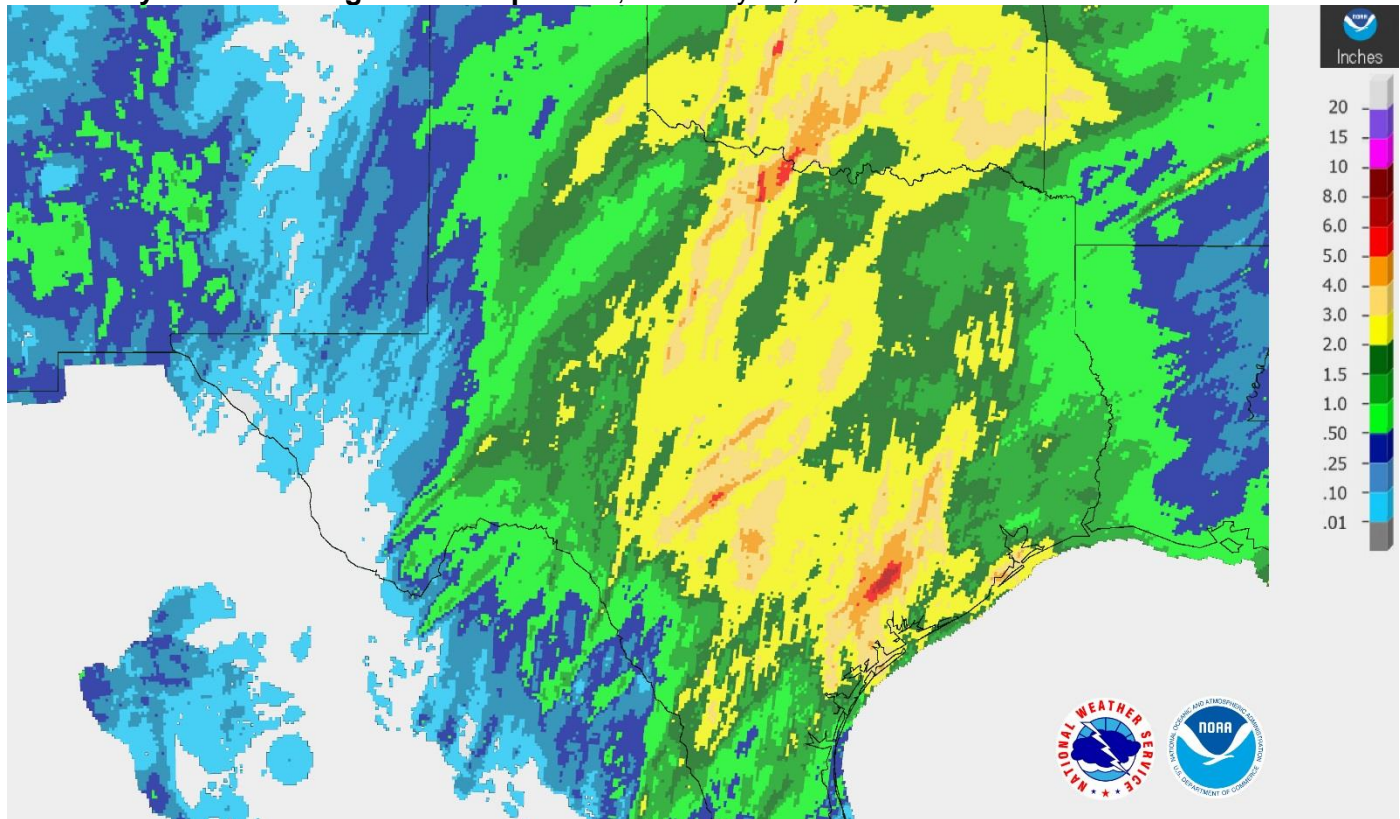
District	Topsoil Moisture Condition by District				Subsoil Moisture Condition by District				Days Suitable for Fieldwork
	Percentage of Acreage				Percentage of Acreage				
	Very Short	Short	Adequate	Surplus	Very Short	Short	Adequate	Surplus	
11	3	13	83	1	5	16	78	1	4.2
12	10	53	36	1	2	47	50	1	6.1
21	1	26	68	5	1	25	63	11	4.6
22	4	20	73	3	0	18	77	5	4.0
30	2	27	65	6	2	23	72	3	4.4
40	6	26	45	23	10	23	48	19	4.2
51	1	17	61	21	1	18	63	18	6.1
52	2	15	79	4	2	11	84	3	6.0
60	36	26	38	0	35	27	38	0	6.7
70	3	21	67	9	2	24	68	6	4.6
81	3	30	59	8	0	31	59	10	5.3
82	15	41	38	6	6	25	60	9	7.0
90	0	6	42	52	0	27	56	17	3.8
96	18	39	42	1	7	47	45	1	6.2
97	4	73	4	19	4	73	4	19	5.3
State	5	29	57	9	4	29	61	6	4.9

### Texas Agricultural Districts

- 11 Northern High Plains
- 12 Southern High Plains
- 21 Northern Low Plains
- 22 Southern Low Plains
- 30 Cross Timbers
- 40 Blacklands
- 51 North East
- 52 South East
- 60 Trans-Pecos
- 70 Edwards Plateau
- 81 South Central
- 82 Coaster Bend
- 90 Upper Coast
- 96 South
- 97 Lower Valley

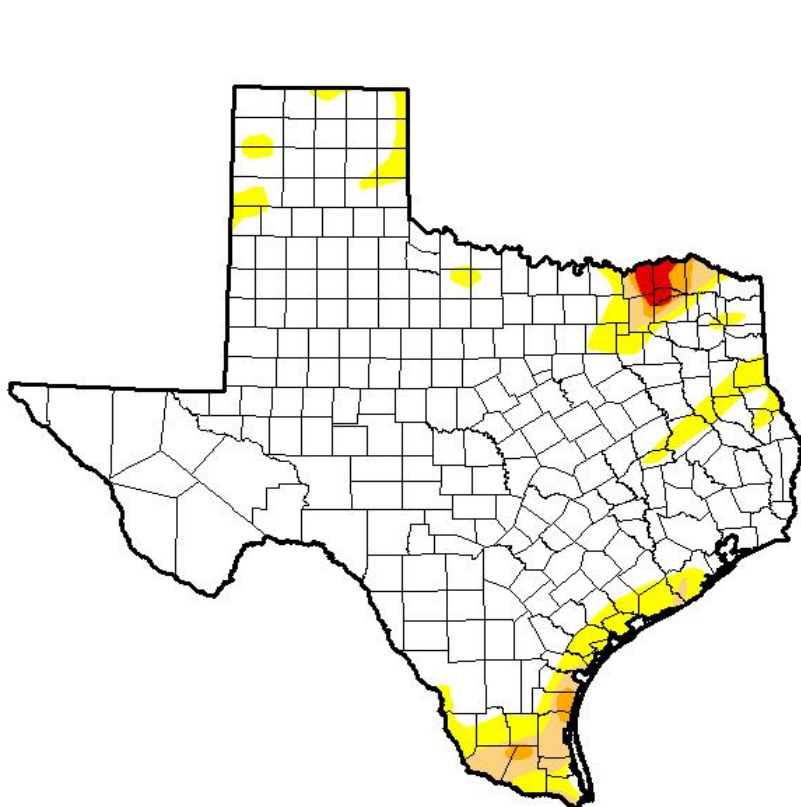


Seven Day Observed Regional Precipitation, February 20, 2017.



Source: National Weather Service, [www.nws.noaa.gov](http://www.nws.noaa.gov)

Drought Monitor, Valid February 14, 2017.



Drought Conditions (Percent Area)

	None	D0-D4	D1-D4	D2-D4	D3-D4	D4
<b>Current</b>	88.14	11.86	3.69	1.26	0.53	0.00
<b>Last Week</b> <i>2/7/2017</i>	90.56	9.44	3.40	1.22	0.19	0.00
<b>3 Months Ago</b> <i>11/15/2016</i>	64.98	35.02	16.32	7.69	0.63	0.00
<b>Start of Calendar Year</b> <i>1/3/2017</i>	81.50	18.50	6.29	1.97	0.04	0.00
<b>Start of Water Year</b> <i>9/27/2016</i>	94.83	5.17	0.62	0.00	0.00	0.00
<b>One Year Ago</b> <i>2/16/2016</i>	55.16	44.84	3.57	0.00	0.00	0.00

Intensity:

- D0 Abnormally Dry
- D1 Moderate Drought
- D2 Severe Drought
- D3 Extreme Drought
- D4 Exceptional Drought

The Drought Monitor focuses on broad-scale conditions. Local conditions may vary. See accompanying text summary for forecast statements.

Author:

Jessica Blunden  
NCEI/NOAA



Source: National Drought Mitigation Center, a partnership with USDA, U.S. Department of Commerce/NOAA, <http://droughtmonitor.unl.edu>