



Texas Crop Progress and Condition

Southern Plains Regional Field Office
Post Office Box 70 Austin, Texas 78767
(800) 626-3142 · FAX (855) 270-2725 · www.nass.usda.gov/tx

Issue: TX-CW0717

Weekly Summary for March 6-March 12

Released: March 13, 2017

Mild temperatures dominated the northern parts of the state. Precipitation in the eastern and southern districts ranged from 0.5 of an inch and 2 inches of rainfall, with isolated reports up to 4 inches. Most of the Edwards Plateau and Trans-Pecos recorded less than half of an inch of rainfall. There were 5.7 days suitable for fieldwork.

Small Grains: Winter wheat condition was rated 75 percent fair to good. Some producers in the Northern and Southern High Plains reported that their wheat fields were jointing. Wheat and oats in South Texas were entering the heading stage. Oats condition was rated 82 percent fair to good.

Row Crops: Cotton was being planted in the Coastal Bend, South Texas and the Lower Valley. Corn was being planted in Blacklands. Rains delayed the planting of corn in the Eastern parts of the state. Some of the corn and sorghum planted in South Central Texas and the Coastal Bend had emerged. Sorghum planting was underway in the Lower Valley.

Fruit, Vegetable and Specialty Crops: Vegetable planting and peach pruning continued in North East Texas. Summer tree fruits were blooming in the Southern Low Plains. Harvest of sugarcane, citrus, and vegetables continued in the Lower Valley.

Livestock, Range and Pasture: Cattle condition was rated mostly good to fair. Some producers in North and South East Texas reported cattle slowing down on hay consumption. Major wildfires were reported in areas of the Northern High and Low Plains. Pasture conditions were rated mostly fair to good across the rest of the state.

Crop Progress

Stage	Percent of Acreage			
	Current Week	Previous. Week	Previous Year	5 Year Average
Corn Planted	25	15	18	19
Sorghum Planted	19	10	13	11

Crop Condition

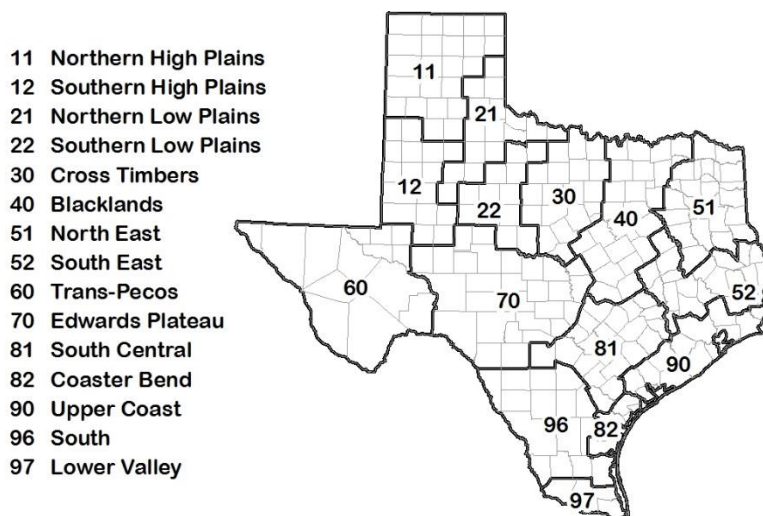
Crop	Percent of Acreage					Index ¹	
	Excellent	Good	Fair	Poor	Very Poor	2017	2016
Wheat	5	30	45	16	4	64	72
Oats	3	36	46	10	5	66	62
Range and Pasture	9	36	37	14	4	-	-

¹ The formula for the condition index is $I = (5V + 25P + 60F + 90G + 110E)/100$ where I = crop condition index and V, P, F, G, E = percentage of crop rated very poor, poor, fair, good, excellent.

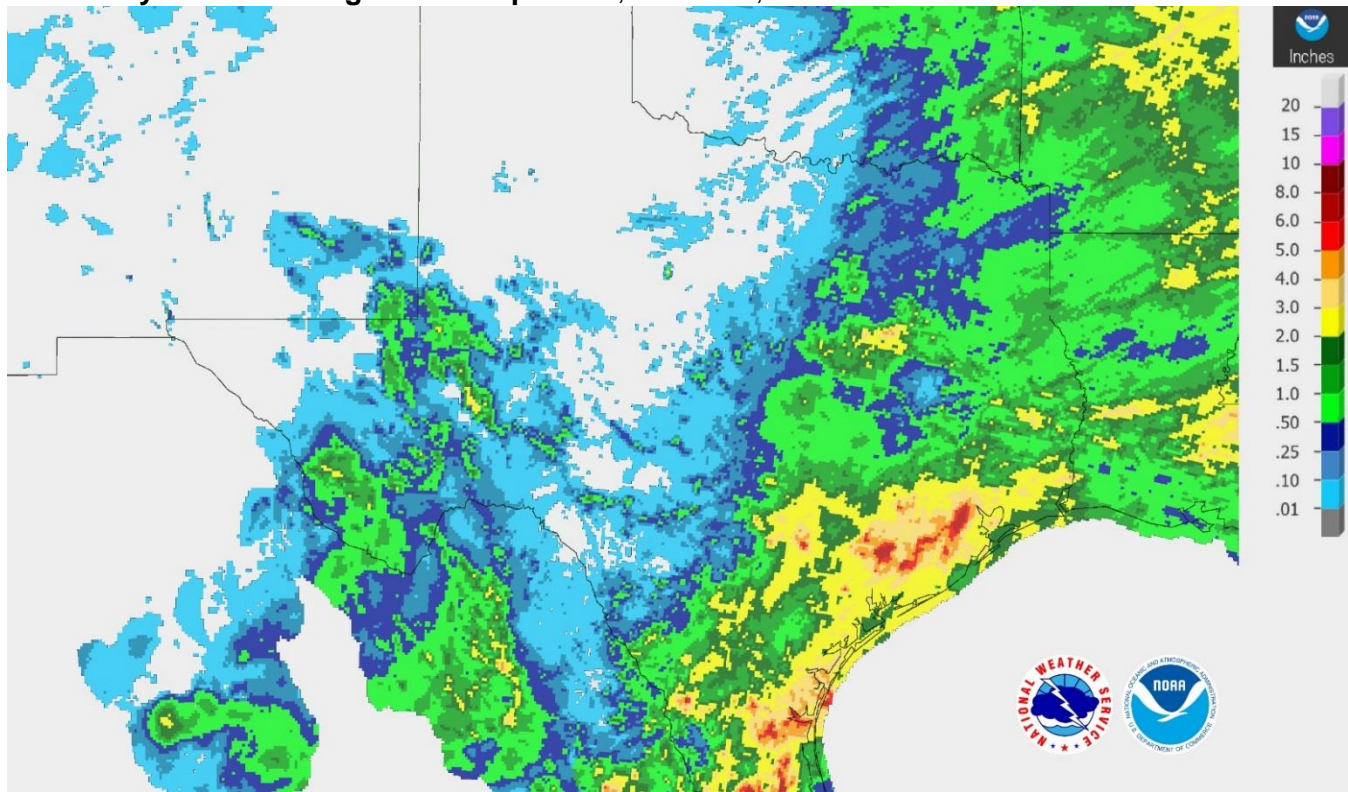
Soil Moisture and Days Suitable by District

District	Topsoil Moisture Condition by District				Subsoil Moisture Condition by District				Days Suitable for Fieldwork
	Percentage of Acreage				Percentage of Acreage				
	Very Short	Short	Adequate	Surplus	Very Short	Short	Adequate	Surplus	
11	22	33	45	0	10	36	54	0	6.4
12	15	61	24	0	6	49	45	0	6.9
21	4	45	47	4	5	38	56	1	6.5
22	1	23	74	2	1	16	83	0	6.4
30	7	17	67	9	3	21	67	9	6.3
40	0	12	58	30	1	20	57	22	4.4
51	1	9	72	18	0	15	67	18	5.8
52	0	7	59	34	1	5	61	33	4.8
60	45	26	29	0	43	28	29	0	6.8
70	5	14	76	5	2	18	75	5	6.6
81	0	7	77	16	0	7	78	15	3.9
82	1	7	55	37	1	18	51	30	0.5
90	0	6	69	25	0	25	53	22	4.2
96	2	20	72	6	3	15	78	4	3.8
97	5	65	25	5	5	65	25	5	6.8
State	9	29	52	10	5	29	58	8	5.7

Texas Agricultural Districts

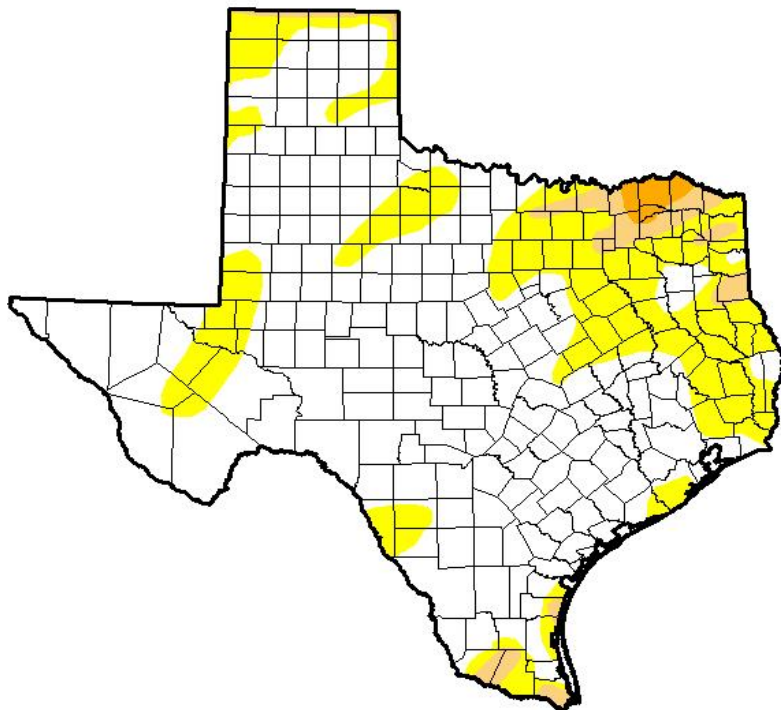


Seven Day Observed Regional Precipitation, March 12, 2017



Source: National Weather Service, www.nws.noaa.gov

Drought Monitor, Valid March 7, 2017



Drought Conditions (Percent Area)

	None	D0-D4	D1-D4	D2-D4	D3-D4	D4
Current	70.92	29.08	4.65	0.93	0.00	0.00
Last Week 2/28/2017	75.50	24.50	3.93	1.01	0.00	0.00
3 Months Ago 12/6/2016	81.90	18.10	4.87	0.65	0.03	0.00
Start of Calendar Year 1/3/2017	81.50	18.50	6.29	1.97	0.04	0.00
Start of Water Year 9/27/2016	94.83	5.17	0.62	0.00	0.00	0.00
One Year Ago 3/8/2016	69.32	30.68	1.47	0.00	0.00	0.00

Intensity:

D0 Abnormally Dry	D3 Extreme Drought
D1 Moderate Drought	D4 Exceptional Drought
D2 Severe Drought	

The Drought Monitor focuses on broad-scale conditions. Local conditions may vary. See accompanying text summary for forecast statements.

Author:

Brian Fuchs
National Drought Mitigation Center



Source: National Drought Mitigation Center, a partnership with USDA, U.S. Department of Commerce/NOAA, <http://droughtmonitor.unl.edu>