



Texas Crop Progress and Condition

Southern Plains Regional Field Office
Post Office Box 70 Austin, Texas 78767
(800) 626-3142 · FAX (855) 270-2725 · www.nass.usda.gov/tx

Issue: TX-CW0817

Weekly Summary for March 13 - March 19

Released: March 20, 2017

Precipitation across the state was scarce during the past week. Only some isolated areas in the Trans-Pecos and the High Plains recorded upwards a third of an inch of precipitation. Most of the state received less than a tenth of an inch of rain. There were 6.3 days suitable for fieldwork.

Small Grains: Winter wheat was rated 74 percent fair to good. Wheat in the Northern and Southern High Plains continued to progress in the jointing stage. In some areas of the Blacklands, wheat reached the heading stage. The lack of moisture caused concerns with some wheat producers in the Plains. Oats condition was rated 80 percent fair to good, two points below the previous week.

Row Crops: Cotton producers in the northern parts of the state continued field preparations for cotton and other row crops. Some of the cotton in the Coastal Bend emerged. Cotton planting continued in South Texas and the Lower Valley. Corn was being planted in the Blacklands, North East Texas, South Central, South Texas and the Upper Coast.

Fruit, Vegetable and Specialty Crops: Vegetable planting continued in North East Texas. Pecan trees in the Edwards Plateau were budding.

Livestock, Range and Pasture: Cattle condition was mostly rated good to fair. Supplemental feeding continued in the Plains and the Cross Timbers. Pasture and range condition was rated mostly good to fair.

Crop Progress

Stage	Percent of Acreage			
	Current Week	Previous Week	Previous Year	5 Year Average
Corn				
Planted	31	25	28	27
Sorghum				
Planted	26	19	21	18
Winter Wheat				
Headed	1	--	2	0
Oats				
Headed	5	--	4	4

Crop Condition

Crop	Percent of Acreage					Index ¹	
	Excellent	Good	Fair	Poor	Very Poor	2017	2016
Wheat	5	29	45	17	4	64	72
Oats	4	36	44	11	5	66	65
Range and Pasture	9	41	34	12	4	--	--

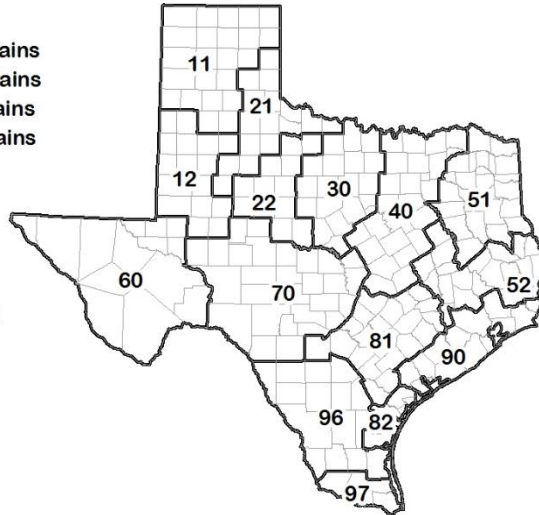
¹ The formula for the condition index is $I = (5V + 25P + 60F + 90G + 110E)/100$ where I = crop condition index and V, P, F, G, E = percentage of crop rated very poor, poor, fair, good, excellent.

Soil Moisture and Days Suitable by District

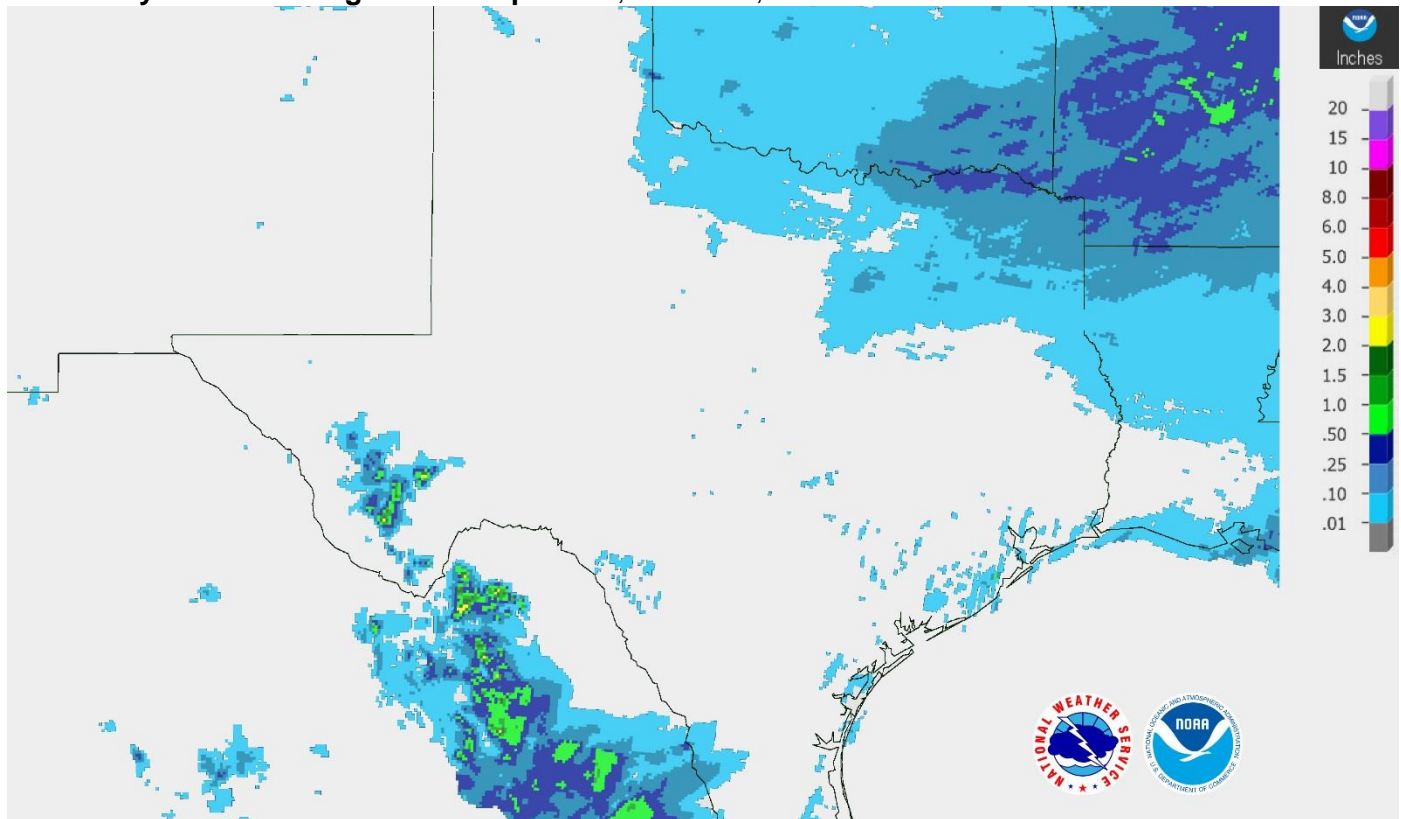
District	Topsoil Moisture Condition by District				Subsoil Moisture Condition by District				Days Suitable for Fieldwork
	Percentage of Acreage				Percentage of Acreage				
	Very Short	Short	Adequate	Surplus	Very Short	Short	Adequate	Surplus	
11	23	40	37	0	12	39	49	0	6.8
12	20	59	21	0	8	49	43	0	6.8
21	6	45	48	1	15	31	53	1	6.9
22	5	39	55	1	1	21	78	0	6.6
30	7	28	61	4	3	26	69	2	6.5
40	0	17	75	8	1	20	74	5	5.9
51	1	15	69	15	0	19	65	16	6.6
52	0	10	61	29	1	8	58	33	6.1
60	33	42	25	0	32	42	26	0	6.9
70	5	15	75	5	3	17	76	4	6.9
81	0	11	80	9	0	9	82	9	5.1
82	1	5	62	32	1	14	55	30	4.2
90	0	7	58	35	0	8	44	48	4.7
96	2	37	57	4	2	14	81	3	6.1
97	5	28	52	15	5	59	21	15	5.7
State	10	33	50	7	6	30	57	7	6.3

Texas Agricultural Districts

- 11 Northern High Plains
- 12 Southern High Plains
- 21 Northern Low Plains
- 22 Southern Low Plains
- 30 Cross Timbers
- 40 Blacklands
- 51 North East
- 52 South East
- 60 Trans-Pecos
- 70 Edwards Plateau
- 81 South Central
- 82 Coaster Bend
- 90 Upper Coast
- 96 South
- 97 Lower Valley

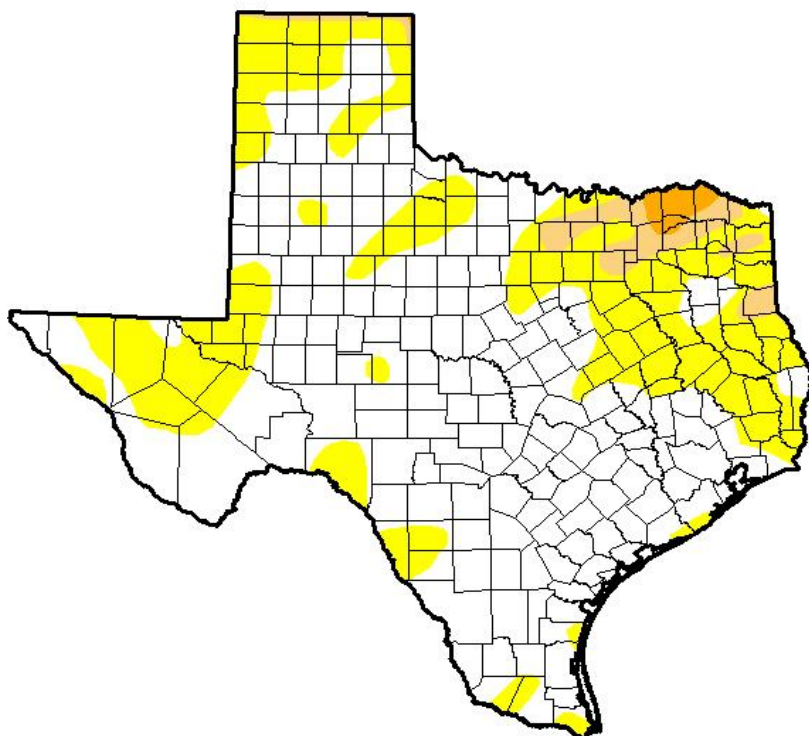


Seven Day Observed Regional Precipitation, March 19, 2017.



Source: National Weather Service, www.nws.noaa.gov

Drought Monitor, Valid March 14, 2017.



Drought Conditions (Percent Area)

	None	D0-D4	D1-D4	D2-D4	D3-D4	D4
Current	65.12	34.88	4.52	0.93	0.00	0.00
Last Week <i>3/7/2017</i>	70.92	29.08	4.65	0.93	0.00	0.00
3 Months Ago <i>12/13/2016</i>	80.86	19.14	7.36	1.94	0.04	0.00
Start of Calendar Year <i>1/3/2017</i>	81.50	18.50	6.29	1.97	0.04	0.00
Start of Water Year <i>9/27/2016</i>	94.83	5.17	0.62	0.00	0.00	0.00
One Year Ago <i>3/15/2016</i>	88.58	11.42	0.12	0.00	0.00	0.00

Intensity:

- D0 Abnormally Dry
- D1 Moderate Drought
- D2 Severe Drought
- D3 Extreme Drought
- D4 Exceptional Drought

The Drought Monitor focuses on broad-scale conditions. Local conditions may vary. See accompanying text summary for forecast statements.

Author:

Brian Fuchs
National Drought Mitigation Center



Source: National Drought Mitigation Center, a partnership with USDA, U.S. Department of Commerce/NOAA, <http://droughtmonitor.unl.edu>