



# Texas Crop Progress and Condition

Southern Plains Regional Field Office  
Post Office Box 70 Austin, Texas 78767  
(800) 626-3142 · FAX (855) 270-2725 · [www.nass.usda.gov/tx](http://www.nass.usda.gov/tx)

Issue: TX-CW0917

Weekly Summary for March 20- 26

Released: March 27, 2017

Warm, windy conditions were experienced in many areas of the state last week. Strong winds caused damage to some crops in the Trans Pecos. Precipitation in the Northeastern part of the state fluctuated between a quarter of an inch and 2.5 inches. Most areas of the state recorded less than a quarter of an inch of rainfall. There were 6.4 days suitable for fieldwork.

**Small Grains:** Winter wheat was rated 72 percent fair to good. Some wheat fields in the Southern Low Plains showed signs of moisture stress, but the dry conditions extended to most of the Northern parts of the state, the Edwards Plateau and South Texas. Oats condition was rated 79 percent fair to good, one point below the previous week.

**Row Crops:** Cotton planting continued in the Lower Valley and the Upper Coast. Producers in the Northern districts of the state continued field preparations for cotton planting. Corn planting continued across the state. Corn in the Blacklands was emerging and producers were fertilizing fields. Sorghum planting was underway in South Texas.

**Fruit, Vegetable and Specialty Crops:** Pecan trees in the Southern Low Plains, the Cross Timbers, the Edwards Plateau and South Texas were budding. Harvest of sugarcane, citrus and vegetables continued in the Lower Valley.

**Livestock, Range and Pasture:** Producers in the plains and the Blacklands were still supplementing cattle on range. Most of the cattle was in good condition. Although some of the pasture dried out due to the warm weather and strong winds, the pasture and range condition was rated mostly good to fair.

## Crop Progress

Stage	Percent of Acreage			
	Current Week	Previous Week	Previous Year	5 Year Average
<b>Corn</b>				
Planted	45	31	37	34
Emerged	14	NA	4	9
<b>Cotton</b>				
Planted	3	NA	2	4
<b>Rice</b>				
Planted	24	NA	15	11
<b>Sorghum</b>				
Planted	39	26	30	25
<b>Winter Wheat</b>				
Headed	11	1	5	3
<b>Oats</b>				
Headed	19	5	8	11

NA Not available.

### Crop Condition

Crop	Percent of Acreage					Index <sup>1</sup>	
	Excellent	Good	Fair	Poor	Very Poor	2017	2016
Wheat	5	29	43	18	5	62	73
Oats	4	37	42	11	6	66	66
Range and Pasture	11	40	34	11	4	--	--

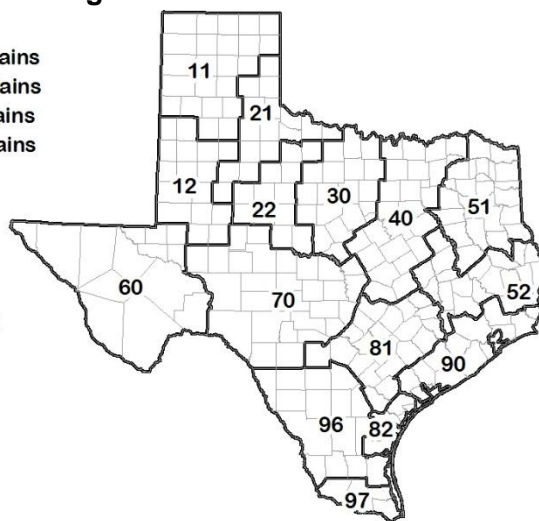
<sup>1</sup> The formula for the condition index is  $I = (5V + 25P + 60F + 90G + 110E)/100$  where I = crop condition index and V, P, F, G, E = percentage of crop rated very poor, poor, fair, good, excellent.

### Soil Moisture and Days Suitable by District

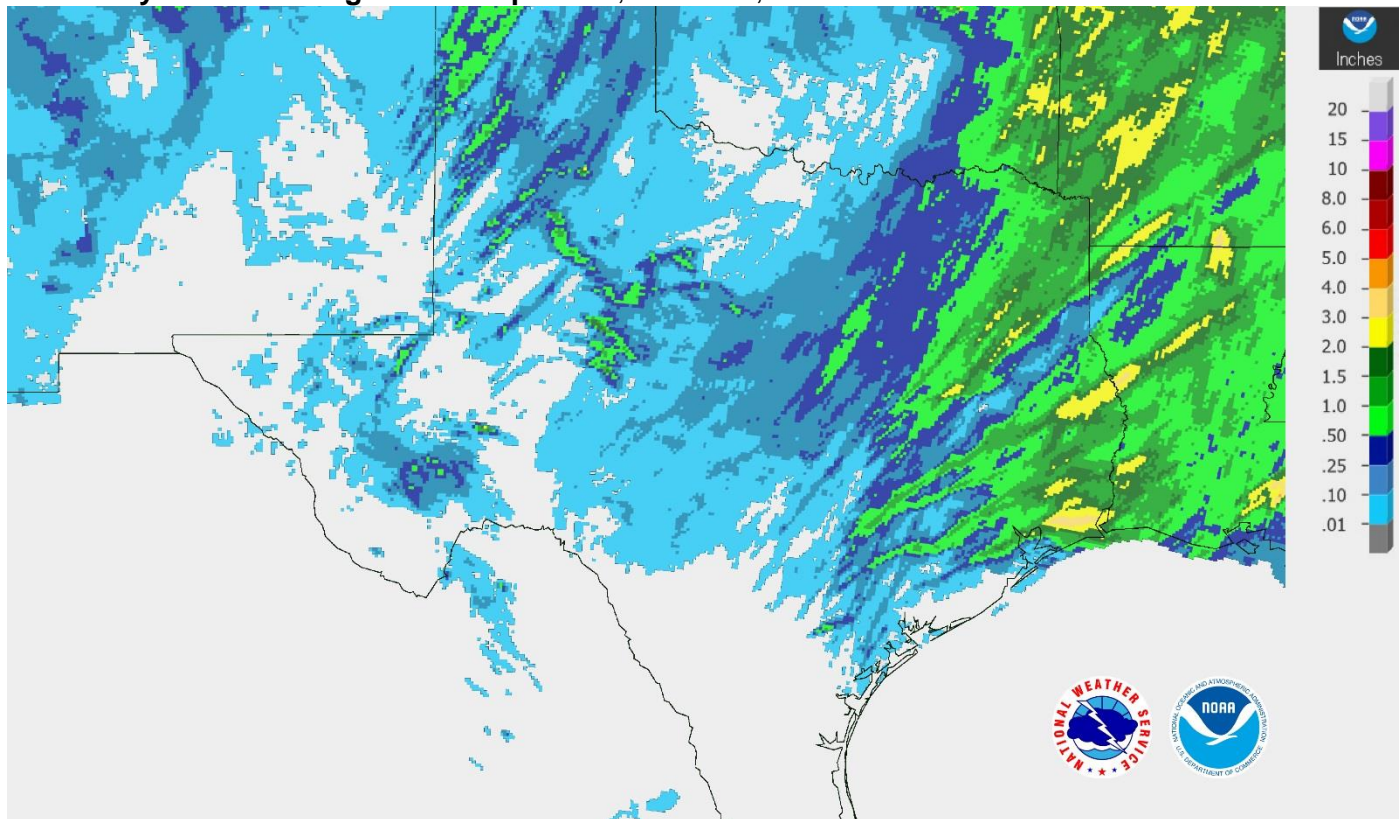
District	Topsoil Moisture Condition by District				Subsoil Moisture Condition by District				Days Suitable for Fieldwork
	Percentage of Acreage				Percentage of Acreage				
	Very Short	Short	Adequate	Surplus	Very Short	Short	Adequate	Surplus	
11	28	35	37	0	20	33	47	0	6.6
12	25	55	20	0	11	50	39	0	6.6
21	8	58	33	1	6	46	47	1	6.5
22	8	57	34	1	2	40	58	0	6.3
30	8	39	51	2	4	32	63	1	6.0
40	1	23	67	9	1	19	76	4	6.3
51	1	18	67	14	1	21	62	16	6.5
52	0	7	85	8	1	9	82	8	6.5
60	36	40	24	0	36	41	23	0	6.8
70	7	15	73	5	4	16	76	4	6.8
81	0	19	72	9	0	12	80	8	6.1
82	1	9	84	6	1	14	82	3	7.0
90	1	10	79	10	0	11	48	41	5.8
96	15	25	59	1	3	17	80	0	6.9
97	5	32	63	0	5	63	32	0	5.7
State	13	35	48	4	8	32	56	4	6.4

### Texas Agricultural Districts

- 11 Northern High Plains
- 12 Southern High Plains
- 21 Northern Low Plains
- 22 Southern Low Plains
- 30 Cross Timbers
- 40 Blacklands
- 51 North East
- 52 South East
- 60 Trans-Pecos
- 70 Edwards Plateau
- 81 South Central
- 82 Coaster Bend
- 90 Upper Coast
- 96 South
- 97 Lower Valley

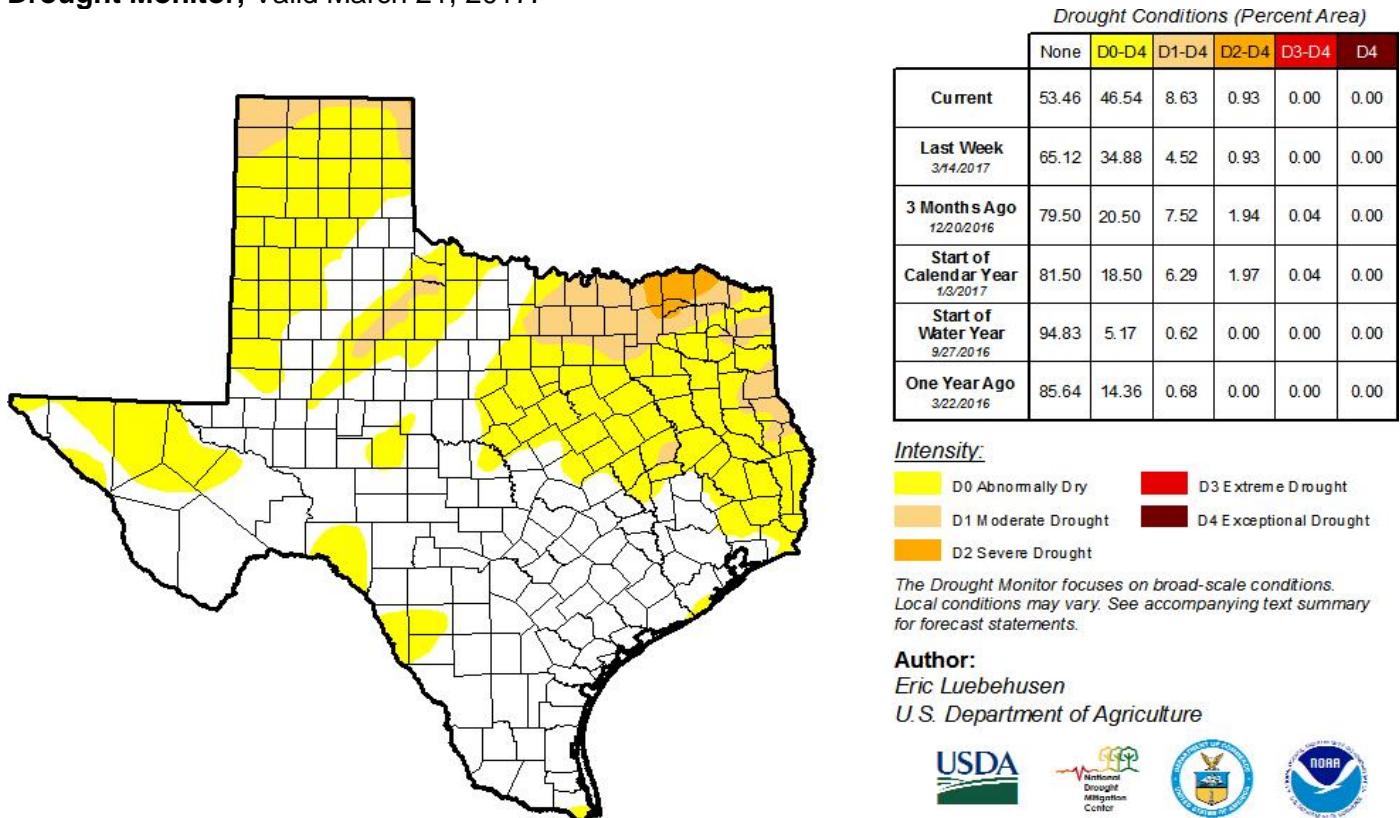


**Seven Day Observed Regional Precipitation, March 26, 2017.**



Source: National Weather Service, [www.nws.noaa.gov](http://www.nws.noaa.gov)

**Drought Monitor, Valid March 21, 2017.**



Source: National Drought Mitigation Center, a partnership with USDA, U.S. Department of Commerce/NOAA, <http://droughtmonitor.unl.edu>