



Texas Crop Progress and Condition

Southern Plains Regional Field Office
Post Office Box 70 Austin, Texas 78767
(800) 626-3142 · FAX (855) 270-2725 · www.nass.usda.gov/tx

Issue: TX-CW1117

Weekly Summary for April 3-April 9

Released: April 10, 2017

Mostly warm and windy conditions were experienced across the state last week. Precipitation in the Northern Plains and the Cross Timbers fluctuated between a quarter of an inch and 1.5 inches. The Blacklands, North East and South East Texas received between 1.0 inch and 2.5 inches of rainfall. There were 5.6 days suitable for fieldwork.

Small Grains: Winter wheat condition was rated 79 percent fair to good. Wheat was heading in the Plains, the Blacklands and North East Texas. Wheat streak mosaic virus and Russian wheat aphids were reported in fields on the Northern High Plains. Rust was affecting wheat and oats in the Blacklands. Oats condition was rated 77 percent fair to good, five points below the previous week.

Row Crops: Cotton planted was estimated at 10 percent, on pace with the five-year average. Cotton planting continued in the Blacklands, South East Texas, South Central Texas and the Upper Coast. Preparations for cotton planting were underway in the Southern Low Plains. Corn planting was still in progress in the Blacklands. Rootless corn syndrome was reported in a few fields in the Upper Coast.

Fruit, Vegetable and Specialty Crops: Producers in North East Texas continued harvest of cool season vegetables and planting warm season vegetables. Pecan trees had budded in the Cross Timbers.

Livestock, Range and Pasture: Most of the state's cattle were in good condition. However, ticks and other pests were becoming more prevalent in areas of the Trans Pecos. Supplemental feeding of livestock slowed in the Blacklands. Pasture and pasture condition was rated 75 percent good to fair.

Crop Progress

Stage	Percent of Acreage			
	Current	Prev. Week	Prev. Year	5 Year Avg
Corn				
Planted	59	56	45	50
Emerged	32	25	32	32
Cotton				
Planted	10	7	8	9
Rice				
Planted	53	37	62	54
Emerged	34	11	41	26
Sorghum				
Planted	53	46	39	41
Winter Wheat				
Headed	40	33	19	20
Oats				
Headed	35	30	18	30

Crop Condition

Crop	Percent of Acreage					Index ¹	
	Excellent	Good	Fair	Poor	Very Poor	2017	2016
Wheat	6	35	44	13	2	68	71
Oats	4	34	43	12	7	64	69
Range and Pasture	13	43	32	9	3	--	--

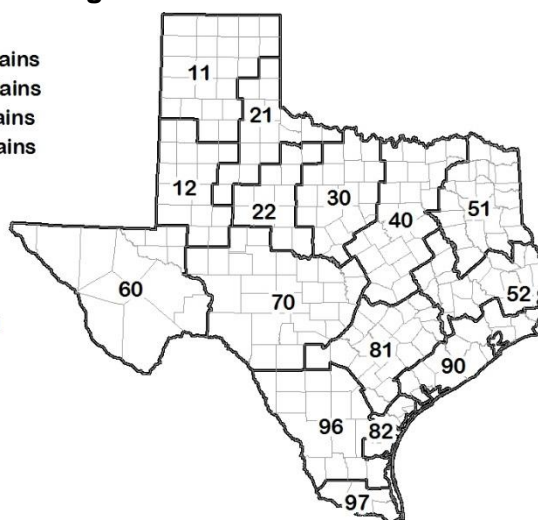
¹ The formula for the condition index is $I = (5V + 25P + 60F + 90G + 110E)/100$ where I = crop condition index and V, P, F, G, E = percentage of crop rated very poor, poor, fair, good, excellent.

Soil Moisture and Days Suitable by District

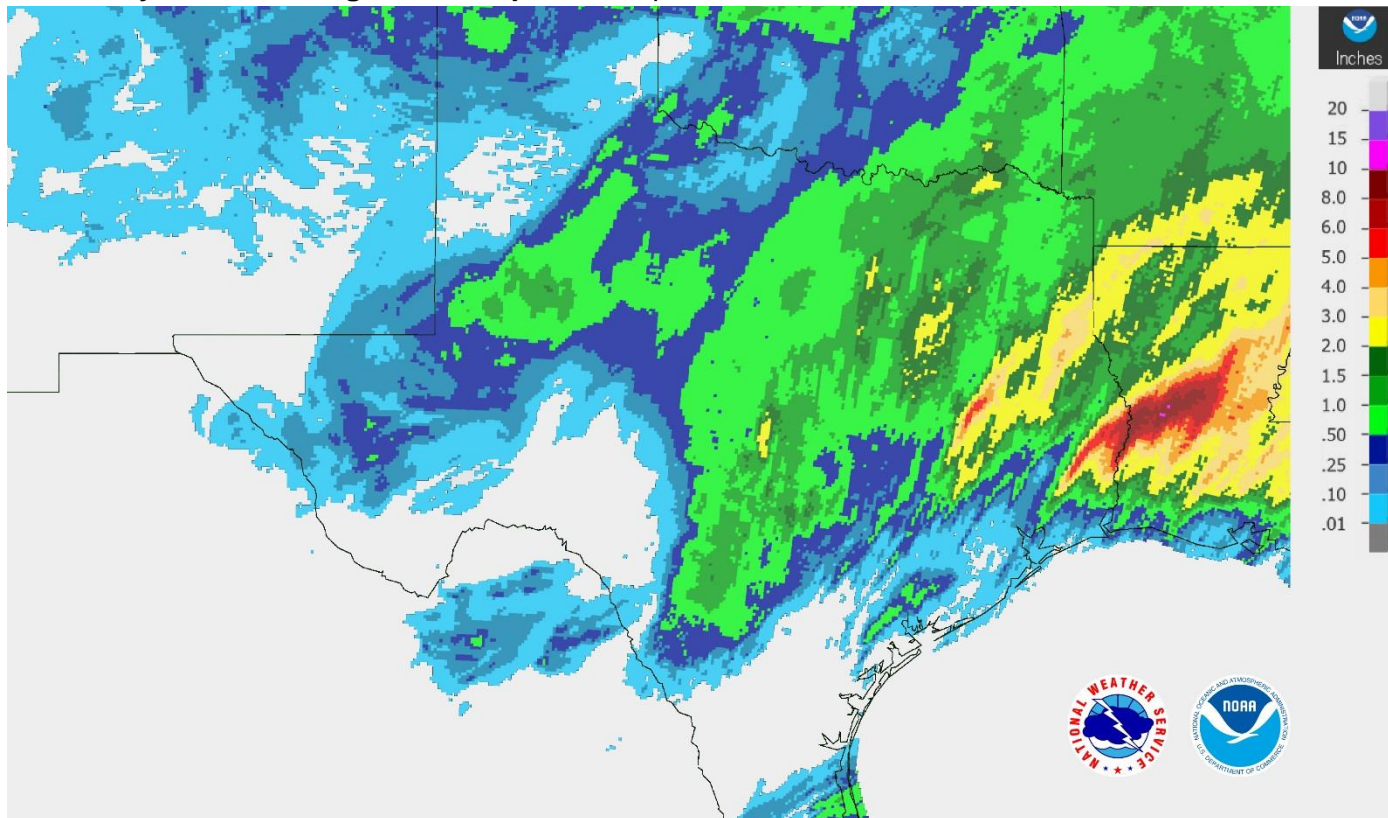
District	Topsoil Moisture Condition by District				Subsoil Moisture Condition by District				Days Suitable for Fieldwork
	Percentage of Acreage				Percentage of Acreage				
	Very Short	Short	Adequate	Surplus	Very Short	Short	Adequate	Surplus	
11	10	18	64	8	5	24	71	0	4.4
12	22	51	26	1	9	47	44	0	6.9
21	1	24	67	8	1	22	69	8	5.1
22	14	18	63	5	0	33	65	2	4.9
30	3	21	64	12	3	22	61	14	5.6
40	1	8	73	18	0	10	71	19	4.3
51	0	17	66	17	4	14	68	14	6.4
52	1	11	64	24	1	8	67	24	4.8
60	32	45	23	0	33	43	24	0	6.8
70	5	13	77	5	4	18	75	3	5.7
81	0	12	75	13	1	12	78	9	6.3
82	1	19	75	5	1	15	81	3	7.0
90	1	15	48	36	2	9	51	38	6.1
96	3	38	59	0	4	17	79	0	6.7
97	7	62	31	0	7	90	3	0	7.0
State	8	25	57	10	4	26	63	7	5.6

Texas Agricultural Districts

- 11 Northern High Plains
- 12 Southern High Plains
- 21 Northern Low Plains
- 22 Southern Low Plains
- 30 Cross Timbers
- 40 Blacklands
- 51 North East
- 52 South East
- 60 Trans-Pecos
- 70 Edwards Plateau
- 81 South Central
- 82 Coaster Bend
- 90 Upper Coast
- 96 South
- 97 Lower Valley

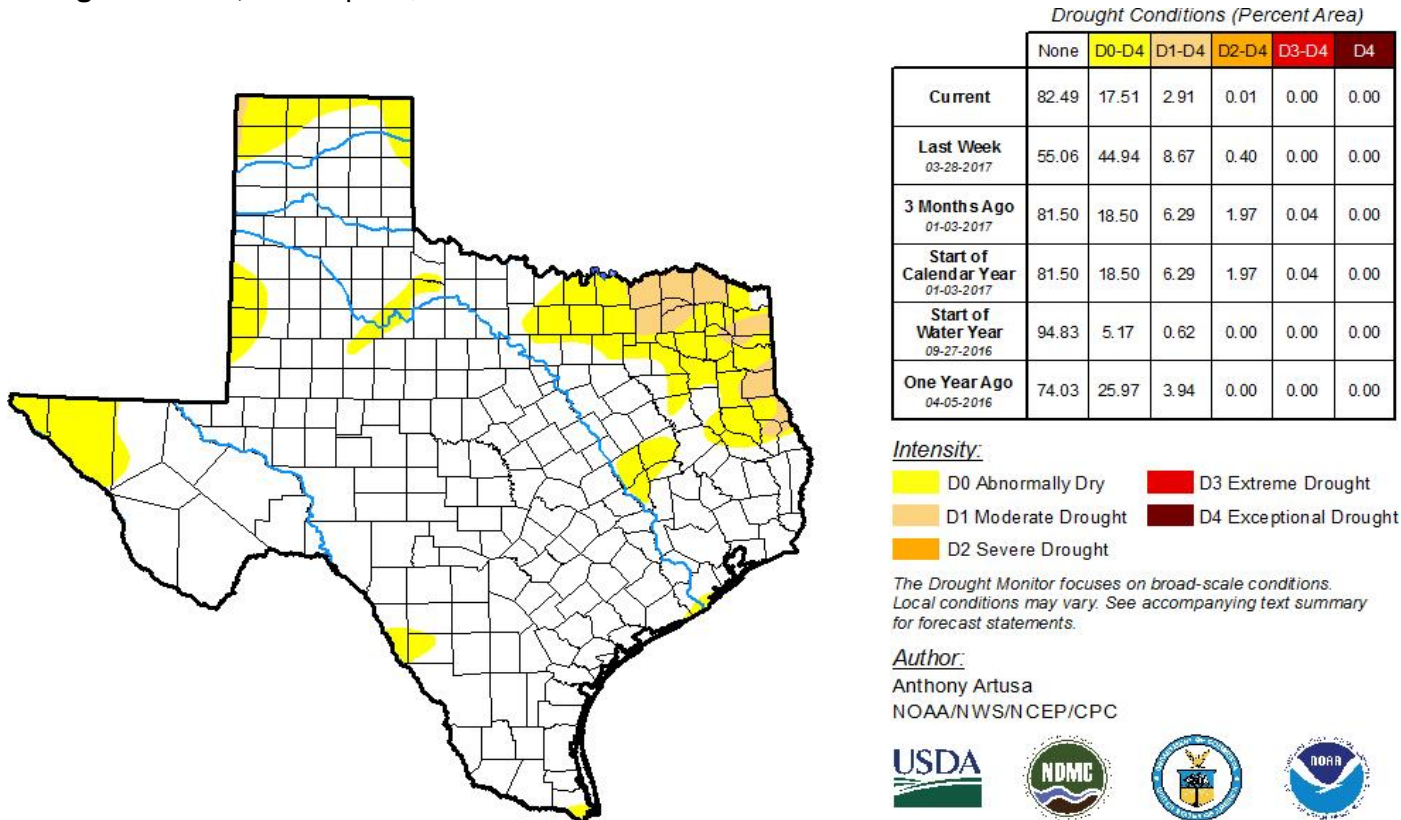


Seven Day Observed Regional Precipitation, April 9, 2017.



Source: National Weather Service, www.nws.noaa.gov

Drought Monitor, Valid April 4, 2017.



Source: National Drought Mitigation Center, a partnership with USDA, U.S. Department of Commerce/NOAA, <http://droughtmonitor.unl.edu>