



Texas Crop Progress and Condition

Southern Plains Regional Field Office
Post Office Box 70 Austin, Texas 78767
(800) 626-3142 · FAX (855) 270-2725 · www.nass.usda.gov/tx

Issue: TX-CW1317

Weekly Summary for April 17-April 23

Released: April 24, 2017

Temperatures across most of the state were slightly cooler than the previous week. Scattered storms affected mostly East and Central Texas, leaving between half of an inch to 2 inches of rainfall. Isolated areas got as much as 5 inches of precipitation. Baseball-size hail was reported in areas of the Blacklands, but the hail damage extended to fields in the Panhandle and the Cross Timbers.

Small Grains: Winter wheat condition was rated at 78 percent fair to good, the same as the previous week. Some winter wheat fields were damaged by hail in the Northern Plains and a few fields in the Blacklands had wheat lodging problems. Leaf rust continued to be an issue for some wheat producers in the Low Plains and the Blacklands. Oat conditions were rated at 76 percent fair to good, on par with the previous week.

Row Crops: Cotton field preparation continued in the High Plains and the Edwards Plateau. Planting continued in the Blacklands, South East, South Central and South Texas. Cotton planted was estimated at 12 percent complete, one point above the previous week. The wet weather conditions delayed planting of row crops in the central and eastern parts of the state.

Fruit, Vegetable and Specialty Crops: Fruit trees were blooming in North East Texas. Vegetable and citrus harvest continued in the Lower Valley. Pecan nut casebearer monitoring was underway in South Central Texas.

Livestock, Range and Pasture: Cattle were in mostly good condition across the state. Pasture and range condition was rated at 76 percent good to fair, unchanged from the previous week. Land owners in the Lower Valley bailed hay. Winter pastures in North East Texas were being cut for silage and hay. Feral hog activity has increased in pastures and hay meadows in North East Texas.

- over -

Crop Progress

Stage	Percent of Acreage			
	Current Week	Previous Week	Previous Year	5 Year Average
Corn				
Planted	68	60	52	59
Emerged	60	56	43	49
Cotton				
Planted	12	11	11	14
Peanuts				
Planted	NA	NA	2	1
Rice				
Planted	70	65	76	77
Emerged	60	48	67	63
Sorghum				
Planted	65	58	49	57
Emerged	45	16	24	22
Soybeans				
Planted	25	8	22	34
Emerged	12	NA	9	4
Winter Wheat				
Headed	67	51	48	50
Oats				
Headed	85	60	57	67

NA Not available.

Crop Condition

Crop	Percent of Acreage					Index ¹	
	Excellent	Good	Fair	Poor	Very Poor	2017	2016
Corn	20	57	20	2	1	86	--
Rice	19	25	50	6	0	75	--
Wheat	7	35	43	13	2	68	72
Oats	4	33	43	13	7	64	70
Range and Pasture	14	49	27	8	2	--	--

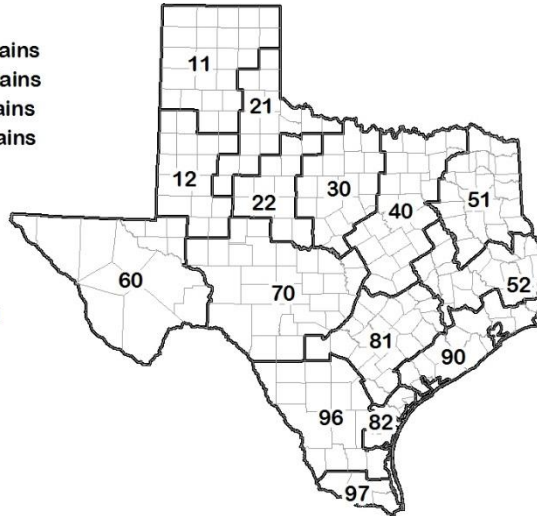
¹ The formula for the condition index is $I = (5V + 25P + 60F + 90G + 110E)/100$ where I = crop condition index and V, P, F, G, E = percentage of crop rated very poor, poor, fair, good, excellent.

Soil Moisture and Days Suitable by District

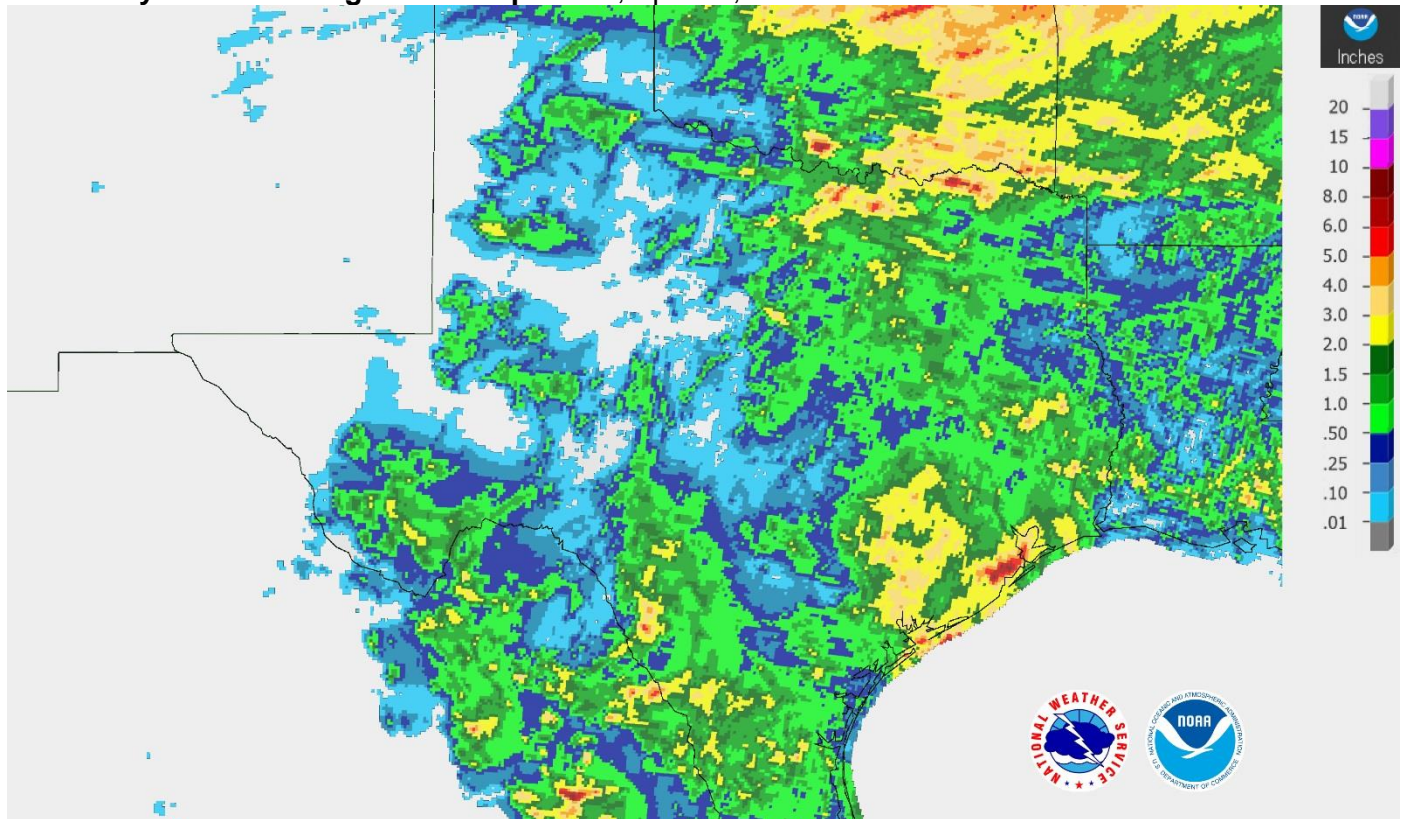
District	Topsoil Moisture Condition by District				Subsoil Moisture Condition by District				Days Suitable for Fieldwork
	Percentage of Acreage				Percentage of Acreage				
	Very Short	Short	Adequate	Surplus	Very Short	Short	Adequate	Surplus	
11	9	20	70	1	6	23	71	0	6.4
12	10	44	45	1	8	46	46	0	6.8
21	1	12	81	6	1	13	78	8	6.4
22	7	41	49	3	0	38	61	1	6.1
30	3	20	72	5	3	17	73	7	5.8
40	2	3	79	16	0	6	68	26	3.8
51	1	19	73	7	1	16	75	8	6.4
52	0	7	63	30	1	6	69	24	5.5
60	19	42	39	0	17	41	42	0	6.8
70	5	19	71	5	4	14	79	3	6.7
81	0	15	73	12	1	10	80	9	5.3
82	1	10	87	2	1	11	86	2	6.3
90	1	4	81	14	1	3	50	46	3.4
96	3	24	72	1	4	18	64	14	5.4
97	7	85	8	0	7	91	2	0	7.0
State	5	24	65	6	4	24	64	8	5.9

Texas Agricultural Districts

- 11 Northern High Plains
- 12 Southern High Plains
- 21 Northern Low Plains
- 22 Southern Low Plains
- 30 Cross Timbers
- 40 Blacklands
- 51 North East
- 52 South East
- 60 Trans-Pecos
- 70 Edwards Plateau
- 81 South Central
- 82 Coaster Bend
- 90 Upper Coast
- 96 South
- 97 Lower Valley

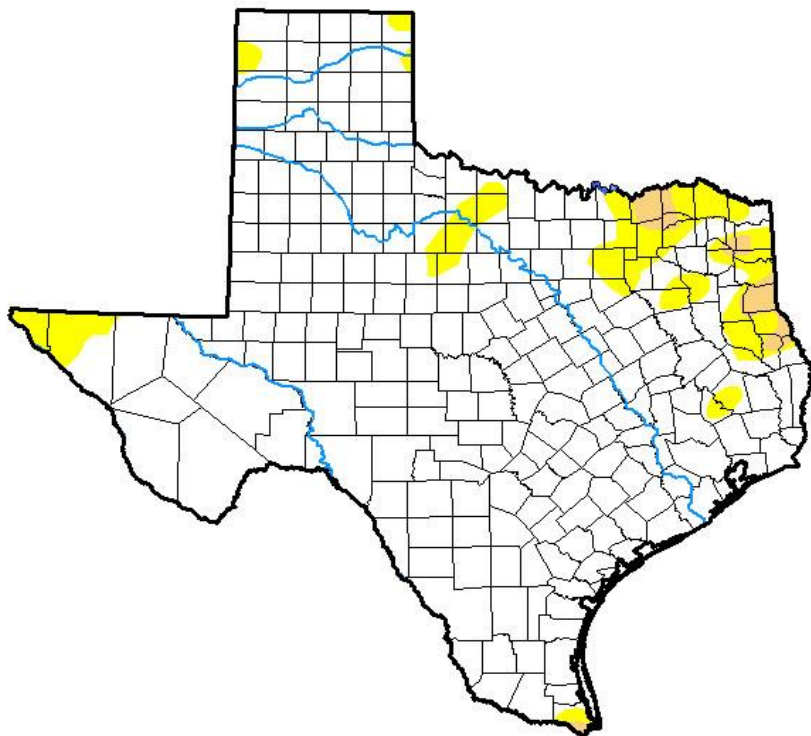


Seven Day Observed Regional Precipitation, April 23, 2017.



Source: National Weather Service, www.nws.noaa.gov

Drought Monitor, Valid April 18, 2017.



Drought Conditions (Percent Area)

	None	D0-D4	D1-D4	D2-D4	D3-D4	D4
Current	90.30	9.70	1.54	0.00	0.00	0.00
Last Week <i>04-11-2017</i>	84.74	15.26	1.71	0.01	0.00	0.00
3 Months Ago <i>01-17-2017</i>	82.78	17.22	4.01	0.94	0.15	0.00
Start of Calendar Year <i>01-03-2017</i>	81.50	18.50	6.29	1.97	0.04	0.00
Start of Water Year <i>09-27-2016</i>	94.83	5.17	0.62	0.00	0.00	0.00
One Year Ago <i>04-19-2016</i>	80.58	19.42	4.59	0.35	0.00	0.00

Intensity:

- D0 Abnormally Dry
- D1 Moderate Drought
- D2 Severe Drought
- D3 Extreme Drought
- D4 Exceptional Drought

The Drought Monitor focuses on broad-scale conditions. Local conditions may vary. See accompanying text summary for forecast statements.

Author:

Chris Fenimore
NCEI/NESDIS/NOAA



Source: National Drought Mitigation Center, a partnership with USDA, U.S. Department of Commerce/NOAA, <http://droughtmonitor.unl.edu>

Texas Crop Progress and Condition (24 April 2017)

USDA, National Agricultural Statistics Service, Southern Plains Regional Field Office