



Texas Crop Progress and Condition

Southern Plains Regional Field Office
Post Office Box 70 Austin, Texas 78767
(800) 626-3142 · FAX (855) 270-2725 · www.nass.usda.gov/tx

Issue: TX-CW1417

Weekly Summary for April 24-April 30

Released: May 1, 2017

Conditions were mostly hot and windy throughout the week, but a cold front lowered the temperature during the weekend and even brought snow to the Panhandle. Up to 5 inches of snow were reported in areas of the Northern High Plains. East Texas received between 0.5 of an inch and 2 inches of rain with isolated areas reporting as much as 5 inches. Wind gusts were clocked at up to 60 miles per hour in the Trans-Pecos

Small Grains: Winter wheat condition was rated at 78 percent fair to good. Producers in the Northern High Plains were concerned with the effects the passing cold front could have on the wheat crop. Wheat in the Cross Timbers and the Southern High Plains was turning colors. Some wheat and oat fields in the High Plains and the Blacklands were being cut and baled for hay. Oat conditions were rated at 74 percent fair to good, 2 points down from the previous week.

Row Crops: Cotton planting was delayed by wet weather in areas of the High Plains. Cotton was being replanted in some areas of the Blacklands due to excessive rain. With planting winding down in the Trans-Pecos, the Lower Valley, South Central and South Texas, producers were focusing on weed and insect control. Corn planting continued in the Northern High Plains. Some corn entered tassel stage in the Coastal Bend, the Upper Coast and South Texas. Sugarcane aphids were found in a sorghum field in the Upper Coast.

Fruit, Vegetable and Specialty Crops: Vegetables and citrus harvest continued in the Lower Valley.

Livestock, Range and Pasture: Flies were becoming a concern for cattle in areas of the Blacklands, South Central and North East Texas. However, cattle were mostly in good condition across the state. Pasture and range condition was rated at 80 percent good to fair, 4 points up from the week prior.

Crop Progress

Stage	Percent of Acreage			
	Current Week	Previous Week	Previous Year	5 Year Average
Corn				
Planted	71	68	64	67
Emerged	64	60	46	55
Cotton				
Planted	13	12	13	16
Peanuts				
Planted	5	N/A	11	5
Rice				
Planted	76	70	79	82
Emerged	69	60	75	74
Sorghum				
Planted	72	65	56	63
Emerged	48	45	29	27
Soybeans				
Planted	45	25	31	45
Emerged	25	12	21	18
Winter Wheat				
Headed	78	67	70	65
Oats				
Headed	96	85	73	80

N/A Not available.

USDA is an equal opportunity provider and employer. The information you provide will be used for statistical purposes only. Your responses will be kept confidential and any person who willfully discloses ANY identifiable information about you or your operation is subject to a jail term, a fine, or both. This survey is conducted in accordance with the Confidential Information Protection provisions of Title V, Subtitle A, Public Law 107-347 and other applicable Federal laws. For more information on how we protect your information please visit: <https://www.nass.usda.gov/confidentiality>. Response to this survey is **voluntary**.

Crop Condition

Crop	Percent of Acreage					Index ¹	
	Excellent	Good	Fair	Poor	Very Poor	2017	2016
Corn	16	54	29	1	0	84	N/A
Rice	17	39	43	1	0	80	72
Wheat	7	37	41	13	2	69	73
Oats	6	29	45	11	9	63	71
Range and Pasture	12	50	30	6	2	--	--

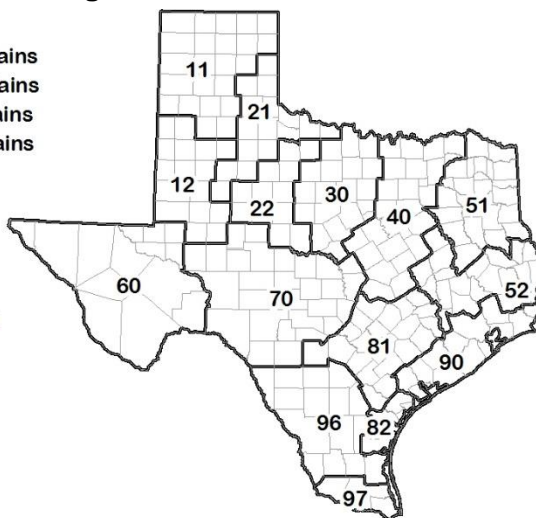
¹ The formula for the condition index is $I = (5V + 25P + 60F + 90G + 110E)/100$ where I = crop condition index and V, P, F, G, E = percentage of crop rated very poor, poor, fair, good, excellent. N/A Not available.

Soil Moisture and Days Suitable by District

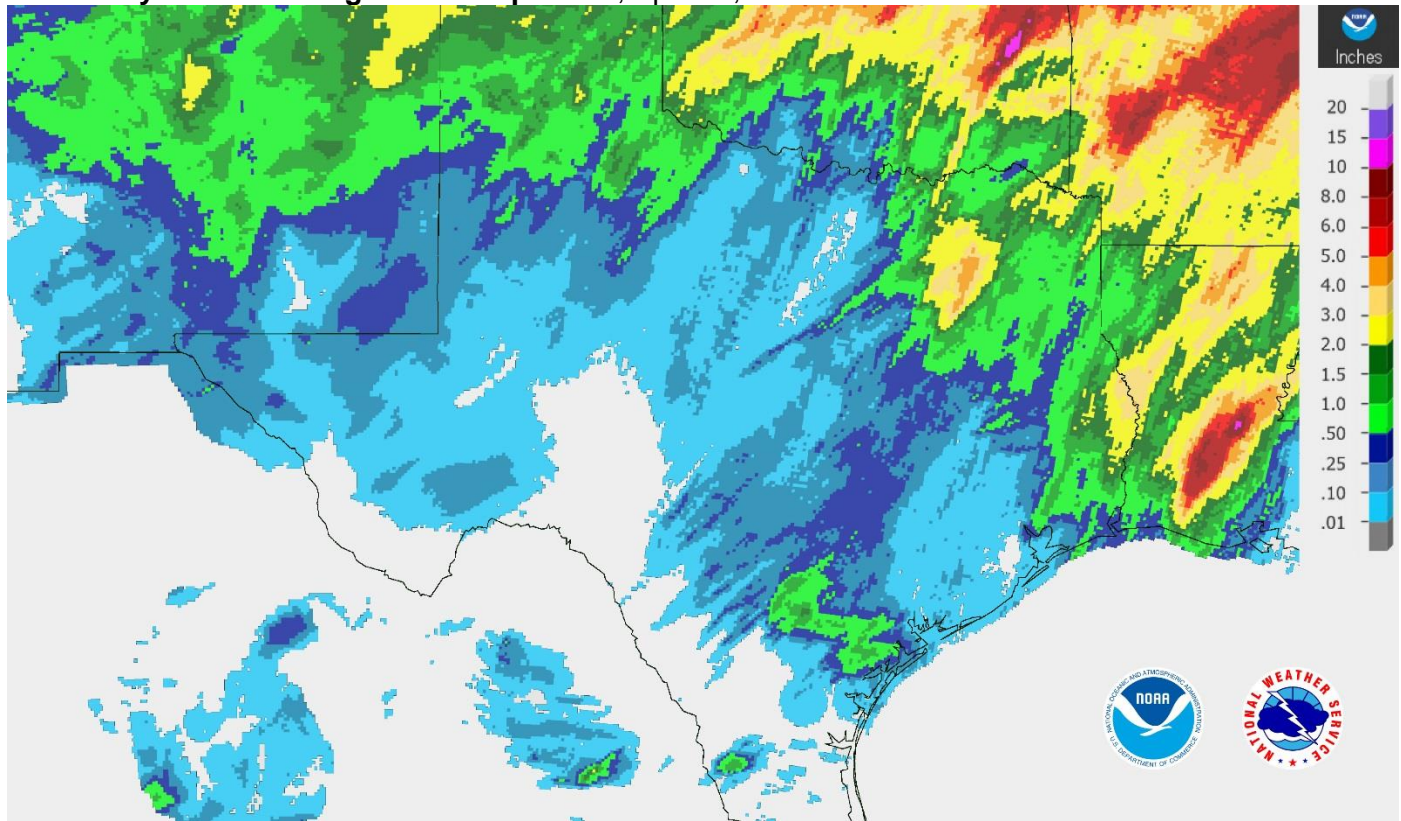
District	Topsoil Moisture Condition by District				Subsoil Moisture Condition by District				Days Suitable for Fieldwork
	Percentage of Acreage				Percentage of Acreage				
	Very Short	Short	Adequate	Surplus	Very Short	Short	Adequate	Surplus	
11	0	13	84	3	0	10	89	1	5.2
12	8	49	41	2	5	47	48	0	5.9
21	1	17	79	3	1	14	78	7	6.6
22	0	58	42	0	0	37	63	0	6.0
30	5	32	59	4	4	24	67	5	6.2
40	3	17	70	10	1	11	81	7	5.0
51	0	12	82	6	0	16	78	6	5.4
52	1	15	72	12	2	12	75	11	6.7
60	23	41	36	0	21	38	41	0	6.8
70	8	50	38	4	5	30	63	2	6.9
81	2	29	58	11	0	22	65	13	6.4
82	0	25	71	4	0	11	77	12	6.2
90	1	15	83	1	1	11	87	1	4.6
96	3	41	55	1	4	21	75	0	5.7
97	7	87	6	0	7	93	0	0	7.0
State	3	31	62	4	2	25	70	3	5.8

Texas Agricultural Districts

- 11 Northern High Plains
- 12 Southern High Plains
- 21 Northern Low Plains
- 22 Southern Low Plains
- 30 Cross Timbers
- 40 Blacklands
- 51 North East
- 52 South East
- 60 Trans-Pecos
- 70 Edwards Plateau
- 81 South Central
- 82 Coaster Bend
- 90 Upper Coast
- 96 South
- 97 Lower Valley

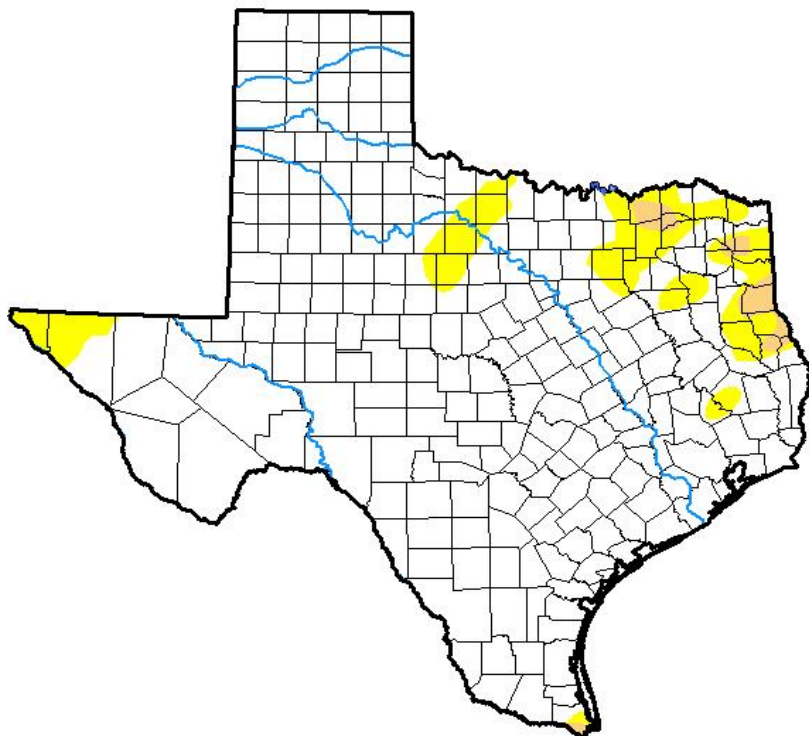


Seven Day Observed Regional Precipitation, April 30, 2017.



Source: National Weather Service, www.nws.noaa.gov

Drought Monitor, Valid April 25, 2017.



Drought Conditions (Percent Area)

	None	D0-D4	D1-D4	D2-D4	D3-D4	D4
Current	90.58	9.42	1.34	0.00	0.00	0.00
Last Week <i>04-18-2017</i>	90.30	9.70	1.54	0.00	0.00	0.00
3 Months Ago <i>01-24-2017</i>	92.24	7.76	3.19	1.08	0.01	0.00
Start of Calendar Year <i>01-03-2017</i>	81.50	18.50	6.29	1.97	0.04	0.00
Start of Water Year <i>09-27-2016</i>	94.83	5.17	0.62	0.00	0.00	0.00
One Year Ago <i>04-26-2016</i>	86.91	13.09	2.28	0.27	0.00	0.00

Intensity:

- D0 Abnormally Dry
- D1 Moderate Drought
- D2 Severe Drought
- D3 Extreme Drought
- D4 Exceptional Drought

The Drought Monitor focuses on broad-scale conditions. Local conditions may vary. See accompanying text summary for forecast statements.

Author:

Eric Luebehusen
U.S. Department of Agriculture



Source: National Drought Mitigation Center, a partnership with USDA, U.S. Department of Commerce/NOAA, <http://droughtmonitor.unl.edu>