



Texas Crop Progress and Condition

Southern Plains Regional Field Office
Post Office Box 70 Austin, Texas 78767
(800) 626-3142 · FAX (855) 270-2725 · www.nass.usda.gov/tx

Issue: TX-CW1517

Weekly Summary for May 1-May 7

Released: May 8, 2017

Warm, dry and windy weather was experienced across many areas of Texas last week resulting in a decline of topsoil moisture. Most of the precipitation was reported in the Eastern part of the state. Areas of North and South East Texas received upwards of 2.0 inches of rain with isolated reports of 5.0 inches.

Small Grains: Winter wheat condition was mostly fair to good. Areas of the Northern High Plains reported damage to wheat fields due to the previous week snow and wet conditions. Producers were still checking for signs of damage. Oat condition was rated mostly fair to good statewide.

Row Crops: Corn planting was just getting underway in the Northern High Plains. Both corn and sorghum planting were delayed by wet field conditions. Corn in the Blacklands was being sprayed for pests. Some corn fields in South and South Central Texas entered the silking stage. Producers in the Southern High Plains were anticipating planting cotton in the coming week. Cotton planting neared completion in the southern districts of the state, but was estimated at 16 percent statewide.

Fruit, Vegetable and Specialty Crops: Vegetables and Citrus harvest continued in the Lower Valley. Early signs of Pecan Nut Casebearer (PNC) showed up in the Trans-Pecos and producers were spraying affected orchards. Producers in the Edwards Plateau also anticipated spraying for PNC.

Livestock, Range and Pasture: Cattle were in mostly good condition across the state. Pasture and range condition was rated at 80 percent good to fair, unchanged from the previous week. Gopher control and feral hog control measures were being taken in North East Texas. Danger of wildfire was reported in the Trans-Pecos due to the high winds and the dry matter in the pastures.

Crop Condition

Crop	Percent of Acreage					Index ¹	
	Excellent	Good	Fair	Poor	Very Poor	2017	2016
Corn	7	53	38	2	0	84	85
Rice	10	43	47	0	0	80	71
Wheat	6	34	44	14	2	69	73
Oats	6	29	45	12	8	63	72
Range and Pasture	10	49	31	8	2	--	--

¹ The formula for the condition index is $I = (5V + 25P + 60F + 90G + 110E)/100$ where I = crop condition index and V, P, F, G, E = percentage of crop rated very poor, poor, fair, good, excellent.

Crop Progress

Stage	Percent of Acreage			
	Current Week	Previous Week	Previous Year	5 Year Average
Corn				
Planted	77	71	69	73
Emerged	67	64	56	61
Silked	8	(NA)	4	2
Cotton				
Planted	16	13	17	19
Squaring	3	(NA)	4	2
Peanuts				
Planted	14	5	22	14
Rice				
Planted	82	76	85	87
Emerged	76	69	79	79
Sorghum				
Planted	76	72	68	69
Emerged	55	48	34	32
Headed	7	(NA)	4	2
Soybeans				
Planted	63	45	56	58
Emerged	41	25	38	34
Sunflowers				
Planted	17	(NA)	29	33
Winter Wheat				
Headed	83	78	82	76

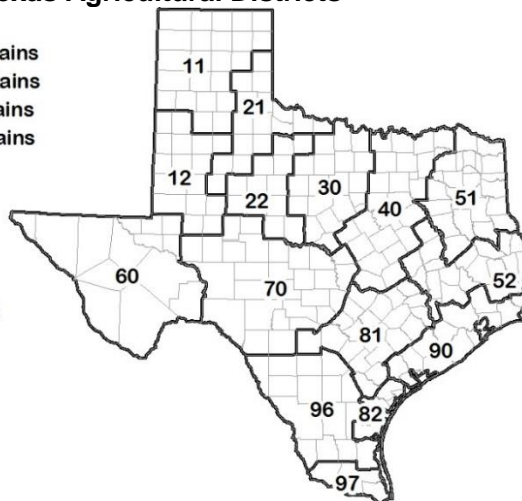
(NA) Not available.

Soil Moisture and Days Suitable by District

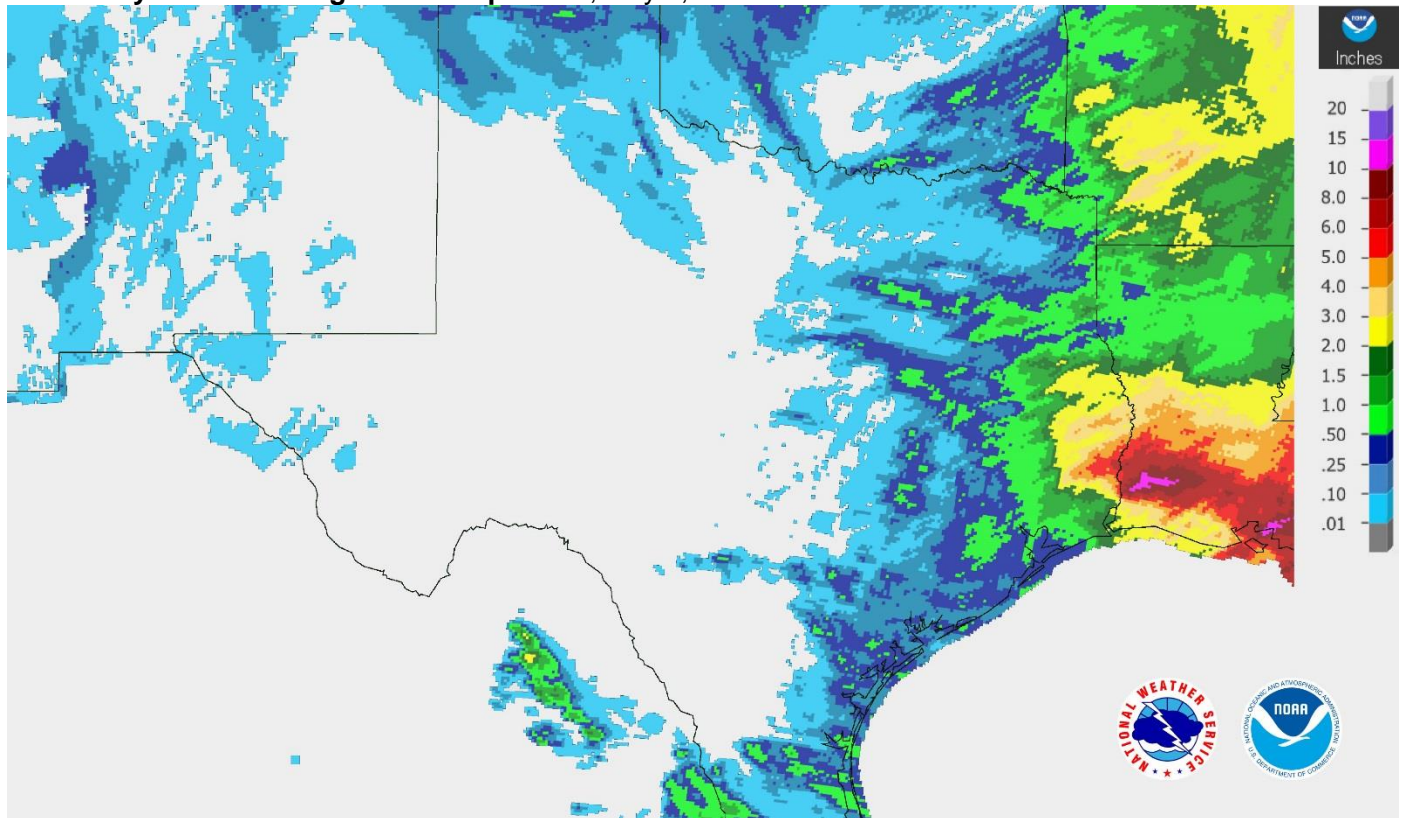
District	Topsoil Moisture Condition by District				Subsoil Moisture Condition by District				Days Suitable for Fieldwork
	Percentage of Acreage				Percentage of Acreage				
	Very Short	Short	Adequate	Surplus	Very Short	Short	Adequate	Surplus	
11	0	21	58	21	0	6	89	5	4.1
12	10	48	40	2	7	51	42	0	6.7
21	2	27	70	1	4	21	72	3	6.8
22	17	53	29	1	12	44	44	0	6.4
30	12	45	40	3	7	34	58	1	6.0
40	4	24	67	5	0	12	83	5	6.3
51	0	6	87	7	0	14	80	6	6.4
52	3	12	72	13	3	8	80	9	6.6
60	23	33	44	0	21	32	47	0	7.0
70	7	55	36	2	8	36	55	1	6.9
81	4	48	45	3	2	34	60	4	6.7
82	15	51	34	0	6	31	63	0	7.0
90	0	34	61	5	1	10	83	6	5.1
96	18	47	35	0	5	48	47	0	6.9
97	7	93	0	0	7	93	0	0	7.0
State	6	37	50	7	4	28	65	3	6.0

Texas Agricultural Districts

- 11 Northern High Plains
- 12 Southern High Plains
- 21 Northern Low Plains
- 22 Southern Low Plains
- 30 Cross Timbers
- 40 Blacklands
- 51 North East
- 52 South East
- 60 Trans-Pecos
- 70 Edwards Plateau
- 81 South Central
- 82 Coaster Bend
- 90 Upper Coast
- 96 South
- 97 Lower Valley

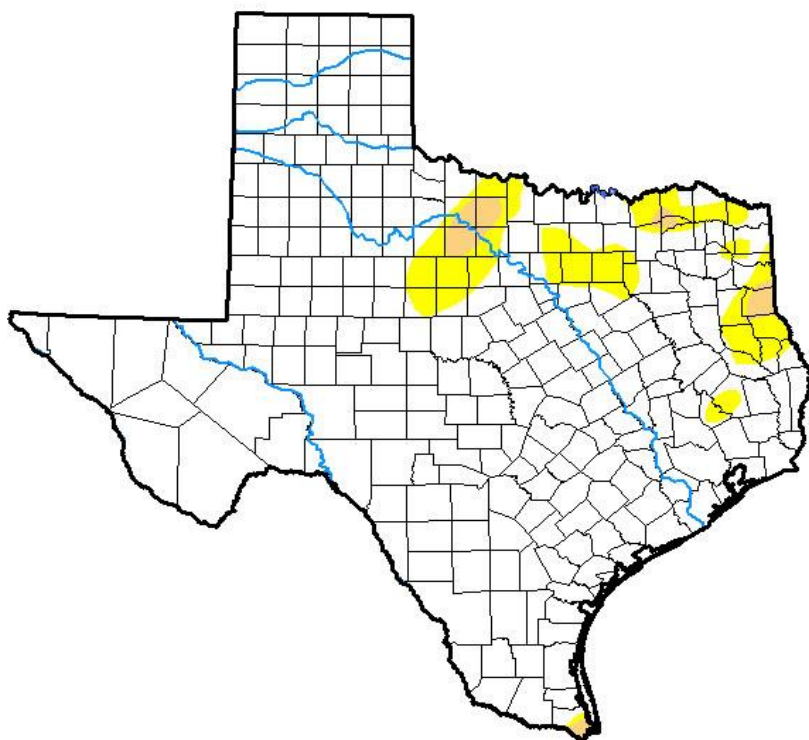


Seven Day Observed Regional Precipitation, May 7, 2017.



Source: National Weather Service, www.nws.noaa.gov

Drought Monitor, Valid May 2, 2017.



Drought Conditions (Percent Area)

	None	D0-D4	D1-D4	D2-D4	D3-D4	D4
Current	91.38	8.62	1.44	0.00	0.00	0.00
Last Week <i>04-25-2017</i>	90.58	9.42	1.34	0.00	0.00	0.00
3 Months Ago <i>01-31-2017</i>	92.34	7.66	3.40	1.08	0.01	0.00
Start of Calendar Year <i>01-03-2017</i>	81.50	18.50	6.29	1.97	0.04	0.00
Start of Water Year <i>09-27-2016</i>	94.83	5.17	0.62	0.00	0.00	0.00
One Year Ago <i>05-03-2016</i>	89.33	10.67	1.08	0.00	0.00	0.00

Intensity:

- D0 Abnormally Dry
- D1 Moderate Drought
- D2 Severe Drought
- D3 Extreme Drought
- D4 Exceptional Drought

The Drought Monitor focuses on broad-scale conditions. Local conditions may vary. See accompanying text summary for forecast statements.

Author:

Brian Fuchs
National Drought Mitigation Center



Source: National Drought Mitigation Center, a partnership with USDA, U.S. Department of Commerce/NOAA, <http://droughtmonitor.unl.edu>