



Texas Crop Progress and Condition

Southern Plains Regional Field Office
Post Office Box 70 Austin, Texas 78767
(800) 626-3142 · FAX (855) 270-2725 · www.nass.usda.gov/tx

Issue: TX-CW1617

Weekly Summary for May 8-May 14

Released: May 15, 2017

Most of the state experienced another week of warm and windy weather. A storm system brought between 0.5 and 1.0 inch of rainfall to the Low Plains, the Blacklands and East Texas. Golf ball sized hail caused damage to the crops in the Northern Low Plains. There were 6.0 days suitable for fieldwork.

Small Grains: Winter wheat condition was mostly fair to good statewide. Harvest continued in the southern districts and was just getting underway in the Southern Low Plains, the Blacklands and the Trans-Pecos. Hail in the Northern Low Plains destroyed some wheat acres. Producers in the Northern High Plains were still concerned with the quality of the wheat after experiencing two late freeze events. Oat harvest was ongoing in the Blacklands and South Central Texas. Oats condition was mostly fair to good statewide

Row Crops: Corn planting continued in the Northern High Plains. Producers in areas of South East Texas were irrigating corn fields. Cotton planting was underway in the High and Low Plains, the Blacklands, North East Texas and the Trans-Pecos. Cotton in the Upper Coast was squaring. Peanut planting started in the Northern Low Plains and in South Texas. Sorghum was heading in the Coastal Bend. Some producers applied insecticides to sorghum fields to control sugarcane aphid populations.

Fruit, Vegetable and Specialty Crops: Vegetables and citrus harvest was winding down in the Lower Valley. Farmers in North East Texas were harvesting onions and potatoes.

Livestock, Range and Pasture: Cattle were in mostly good condition across the state. Flies were prevalent in the Blacklands and caused stress to livestock. Pasture and range condition was rated good to fair statewide, but there were areas in Central and South Texas, where the pasture was drying up and even changing colors due to the lack of moisture. Tornadoes were reported in the Blacklands.

Crop Progress

Stage	Percent of Acreage			
	Current Week	Previous Week	Previous Year	5 Year Average
Corn				
Planted	80	77	77	82
Emerged	72	67	63	70
Silked	15	8	15	11
Cotton				
Planted	24	16	28	27
Squaring	6	3	5	4
Peanuts				
Planted	35	14	39	32
Rice				
Planted	84	82	92	91
Emerged	80	76	84	84
Sorghum				
Planted	77	76	71	75
Emerged	60	55	39	37
Headed	15	7	19	12
Soybeans				
Planted	70	63	61	66
Emerged	55	41	43	49
Sunflowers				
Planted	34	17	33	41
Winter Wheat				
Headed	91	83	95	86
Harvested	7	N/A	2	1
Oats				
Harvested	3	N/A	3	3

N/A Not available.

Crop Condition

Crop	Percent of Acreage					Index ¹	
	Excellent	Good	Fair	Poor	Very Poor	2017	2016
Corn	8	69	20	2	1	83	82
Rice	14	63	22	1	0	86	71
Sorghum	8	63	27	2	0	82	77
Wheat	5	32	46	15	2	66	71
Oats	5	25	49	13	8	61	72
Range and Pasture	9	42	34	12	3	--	--

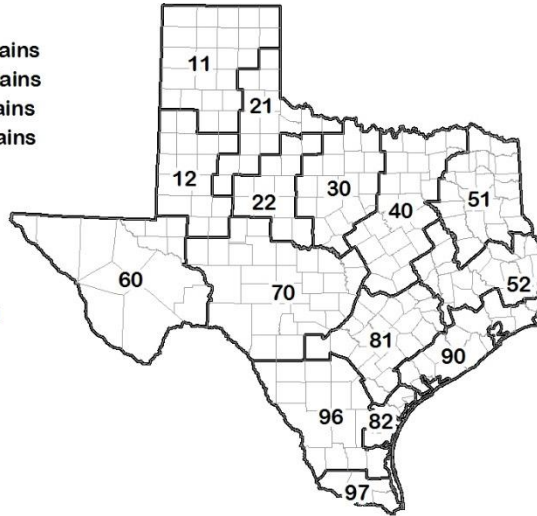
¹ The formula for the condition index is $I = (5V + 25P + 60F + 90G + 110E)/100$ where I = crop condition index and V, P, F, G, E = percentage of crop rated very poor, poor, fair, good, excellent.

Soil Moisture and Days Suitable by District

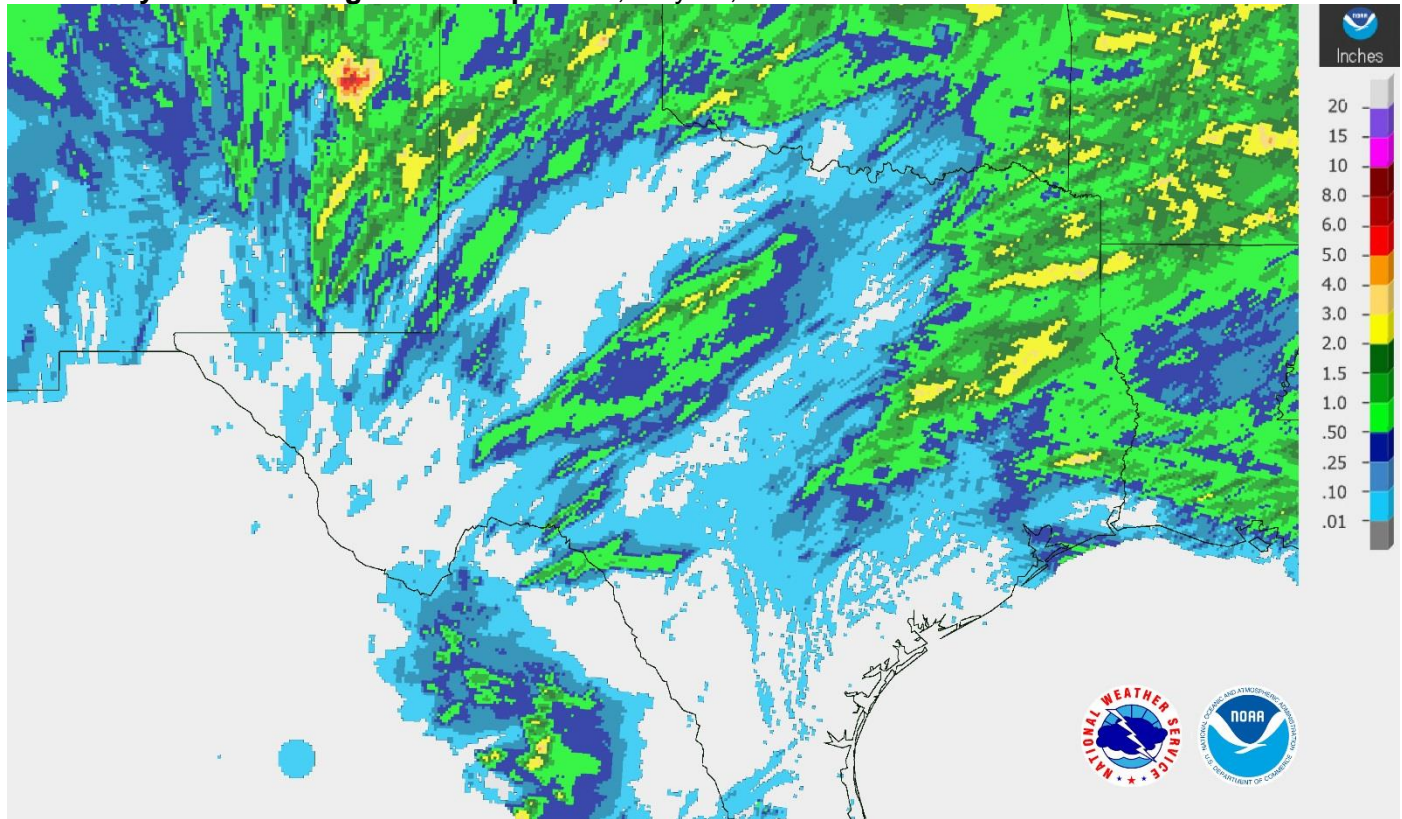
District	Topsoil Moisture Condition by District				Subsoil Moisture Condition by District				Days Suitable for Fieldwork
	Percentage of Acreage				Percentage of Acreage				
	Very Short	Short	Adequate	Surplus	Very Short	Short	Adequate	Surplus	
11	0	10	76	14	0	7	88	5	4.5
12	0	57	41	2	0	56	44	0	6.3
21	2	32	63	3	2	23	71	4	6.7
22	30	42	27	1	1	58	41	0	6.6
30	21	43	32	4	10	33	53	4	5.8
40	15	47	37	1	6	35	58	1	6.5
51	0	14	72	14	0	20	66	14	5.8
52	4	18	65	13	4	14	63	19	5.7
60	26	41	33	0	43	34	23	0	6.7
70	10	58	31	1	7	41	52	0	6.7
81	10	65	25	0	5	54	41	0	6.3
82	24	61	15	0	15	44	41	0	7.0
90	4	38	49	9	3	29	57	11	6.6
96	22	68	10	0	21	42	37	0	6.9
97	19	81	0	0	19	81	0	0	7.0
State	9	41	45	5	5	36	56	3	6.0

Texas Agricultural Districts

- 11 Northern High Plains
- 12 Southern High Plains
- 21 Northern Low Plains
- 22 Southern Low Plains
- 30 Cross Timbers
- 40 Blacklands
- 51 North East
- 52 South East
- 60 Trans-Pecos
- 70 Edwards Plateau
- 81 South Central
- 82 Coaster Bend
- 90 Upper Coast
- 96 South
- 97 Lower Valley

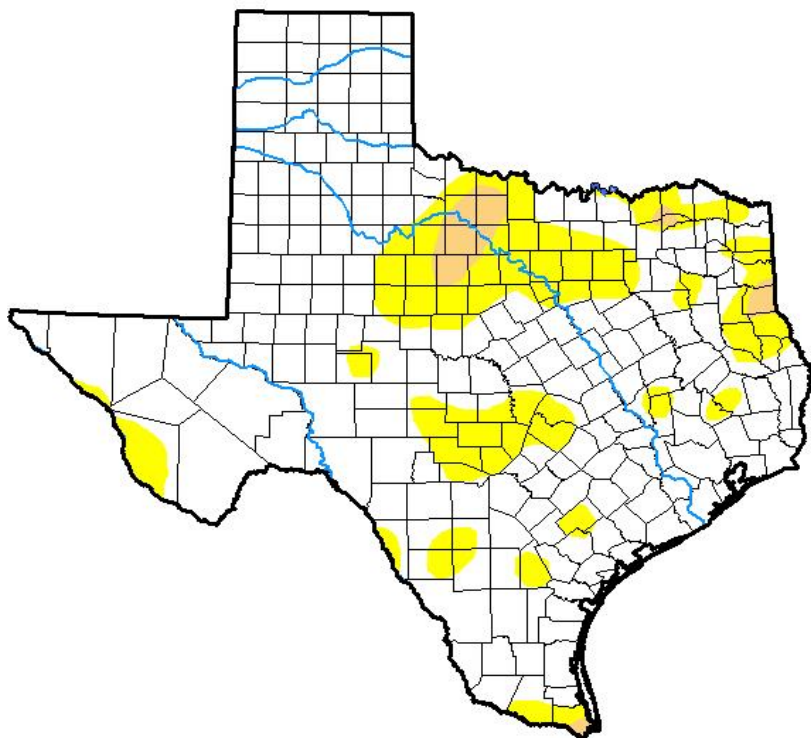


Seven Day Observed Regional Precipitation, May 14, 2017.



Source: National Weather Service, www.nws.noaa.gov

Drought Monitor, Valid May 9, 2017.



Drought Conditions (Percent Area)

	None	D0-D4	D1-D4	D2-D4	D3-D4	D4
Current	78.86	21.14	2.33	0.00	0.00	0.00
Last Week <i>05-02-2017</i>	91.38	8.62	1.44	0.00	0.00	0.00
3 Months Ago <i>02-07-2017</i>	90.56	9.44	3.40	1.22	0.19	0.00
Start of Calendar Year <i>01-03-2017</i>	81.50	18.50	6.29	1.97	0.04	0.00
Start of Water Year <i>09-27-2016</i>	94.83	5.17	0.62	0.00	0.00	0.00
One Year Ago <i>05-10-2016</i>	90.05	9.95	0.73	0.00	0.00	0.00

Intensity:

- D0 Abnormally Dry
- D1 Moderate Drought
- D2 Severe Drought
- D3 Extreme Drought
- D4 Exceptional Drought

The Drought Monitor focuses on broad-scale conditions. Local conditions may vary. See accompanying text summary for forecast statements.

Author:

Brian Fuchs
National Drought Mitigation Center



Source: National Drought Mitigation Center, a partnership with USDA, U.S. Department of Commerce/NOAA, <http://droughtmonitor.unl.edu>