



Texas Crop Progress and Condition

Southern Plains Regional Field Office
Post Office Box 70 Austin, Texas 78767
(800) 626-3142 · FAX (855) 270-2725 · www.nass.usda.gov/tx

Issue: TX-CW1717

Weekly Summary for May 15-May 21

Released: March 22, 2017

Many areas of the state received between 0.5 of an inch to 2.0 inches of rainfall with isolated reports of up to 5.0 inches of rain. The Trans-Pecos, the Panhandle and the Lower Valley reported the lowest total precipitation for the week. There were 6.3 days suitable for fieldwork.

Small Grains: Winter wheat condition was mostly fair to good statewide. Stripe rust was found in winter wheat fields in the Northern High Plains. Wheat harvest slowed down in the Low Plains, the Cross Timbers and the Blacklands due to rain and high humidity. Harvest continued in the Trans-Pecos and South Central Texas with no major setbacks. Oats condition was mostly fair to good statewide

Row Crops: Some farmers continued planting cotton in the Plains, but others decided to wait until after the forecasted rainfall at the end of the week. Peanuts planting continued in the Northern Low Plains and South Texas. The sugarcane aphid was still a threat in sorghum fields in areas of the Coastal Bend.

Fruit, Vegetable and Specialty Crops: Farmers in North East Texas were harvesting fruit and vegetables. Fruit trees in areas of the Trans-Pecos were in need of moisture.

Livestock, Range and Pasture: Cattle were in mostly good condition across the state. Fly numbers were increasing in the Blacklands and North East Texas. Pasture conditions were declining due to lack of moisture in the Edwards Plateau, the Upper Coast, South Texas, South Central and South East Texas. Even though most of the state received rainfall near the end of the week, farmers were concerned high winds and warm temperatures could erode topsoil moisture levels.

Crop Progress

Stage	Percent of Acreage			
	Current Week	Previous Week	Previous Year	5 Year Average
Corn				
Planted	87	80	79	86
Emerged	76	72	65	75
Silked	20	15	20	20
Cotton				
Planted	42	24	31	36
Squaring	8	6	6	5
Peanuts				
Planted	60	35	49	50
Rice				
Planted	86	84	97	94
Emerged	84	80	91	89
Sorghum				
Planted	82	77	72	78
Emerged	65	60	44	42
Headed	35	15	24	20
Soybeans				
Planted	85	70	64	73
Emerged	74	55	53	60
Sunflowers				
Planted	53	34	34	50
Winter Wheat				
Harvested	20	7	5	7
Oats				
Harvested	45	3	13	14

Crop Condition

Crop	Percent of Acreage					Index ¹	
	Excellent	Good	Fair	Poor	Very Poor	2017	2016
Corn	9	62	23	5	1	81	82
Rice	21	39	39	1		82	74
Sorghum	7	64	24	4	1	81	79
Wheat	4	32	46	16	2	65	71
Oats	6	27	50	14	3	65	73
Range and Pasture	6	39	39	13	3	--	--

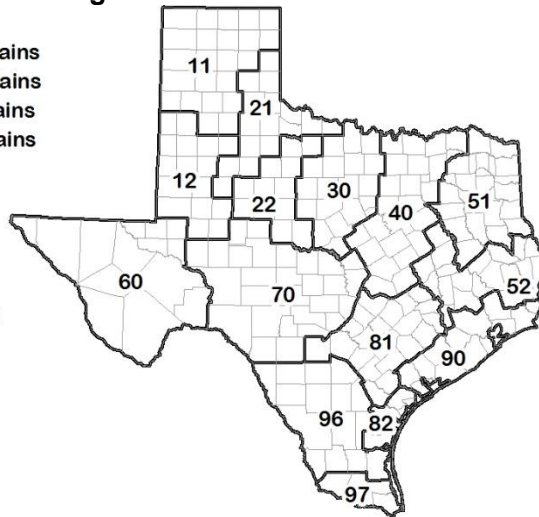
¹ The formula for the condition index is $I = (5V + 25P + 60F + 90G + 110E)/100$ where I = crop condition index and V, P, F, G, E = percentage of crop rated very poor, poor, fair, good, excellent.

Soil Moisture and Days Suitable by District

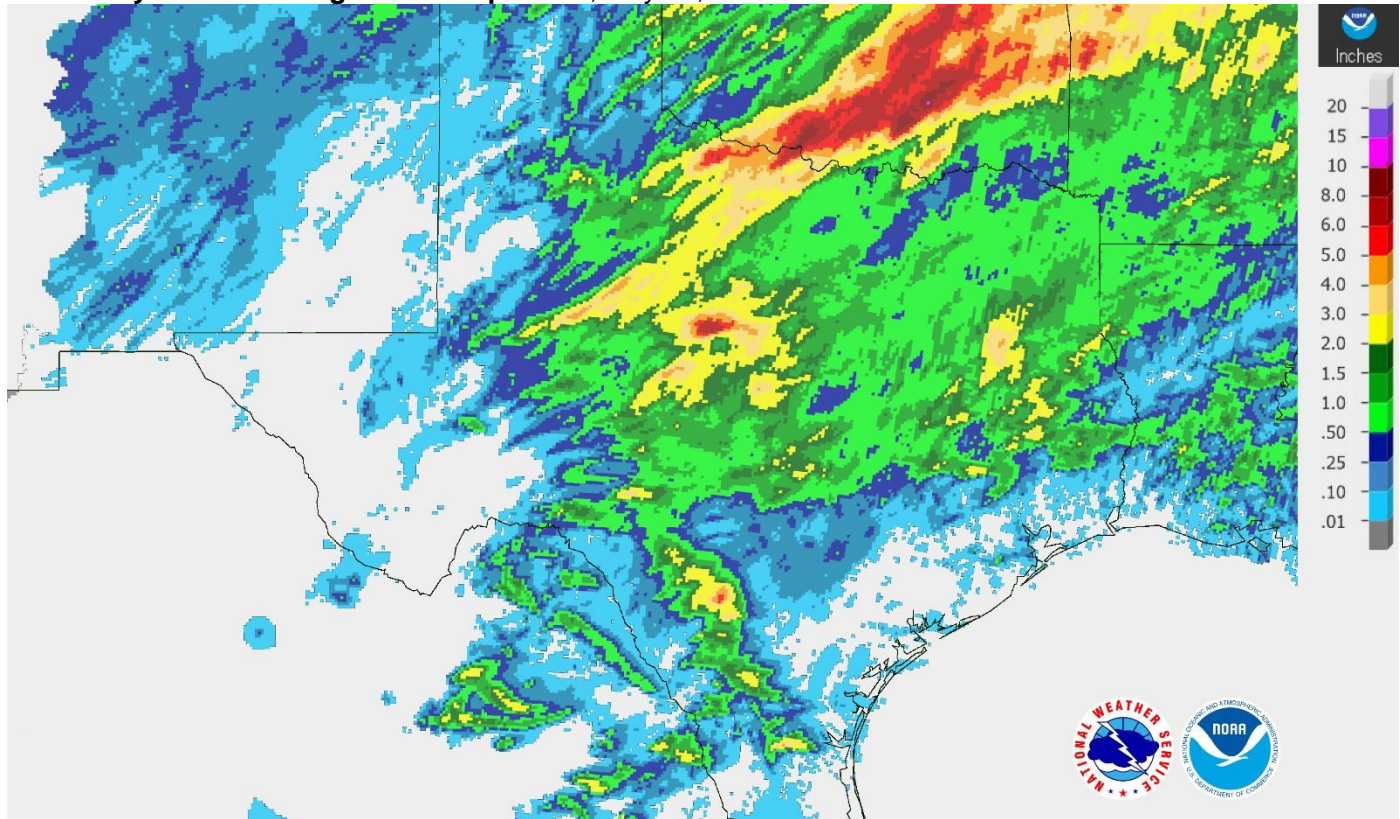
District	Topsoil Moisture Condition by District				Subsoil Moisture Condition by District				Days Suitable for Fieldwork
	Percentage of Acreage				Percentage of Acreage				
	Very Short	Short	Adequate	Surplus	Very Short	Short	Adequate	Surplus	
11	0	18	76	6	0	11	85	4	6.5
12	0	68	31	1	0	53	43	4	7.0
21	4	14	76	6	5	20	74	1	5.4
22	18	29	34	19	2	47	47	4	5.4
30	9	37	46	8	10	29	55	6	5.0
40	10	22	59	9	7	24	66	3	6.0
51	0	19	70	11	0	26	63	11	6.0
52	3	20	52	25	4	15	61	20	5.8
60	17	26	56	1	17	27	56	0	6.6
70	18	50	32	0	10	59	31	0	6.2
81	8	47	44	1	7	37	54	2	6.5
82	42	58	0	0	33	44	23	0	7.0
90	8	53	29	10	5	34	50	11	6.4
96	23	55	22	0	24	46	30	0	6.7
97	85	15	0	0	85	15	0	0	7.0
State	10	36	48	6	8	32	56	4	6.3

Texas Agricultural Districts

- 11 Northern High Plains
- 12 Southern High Plains
- 21 Northern Low Plains
- 22 Southern Low Plains
- 30 Cross Timbers
- 40 Blacklands
- 51 North East
- 52 South East
- 60 Trans-Pecos
- 70 Edwards Plateau
- 81 South Central
- 82 Coaster Bend
- 90 Upper Coast
- 96 South
- 97 Lower Valley

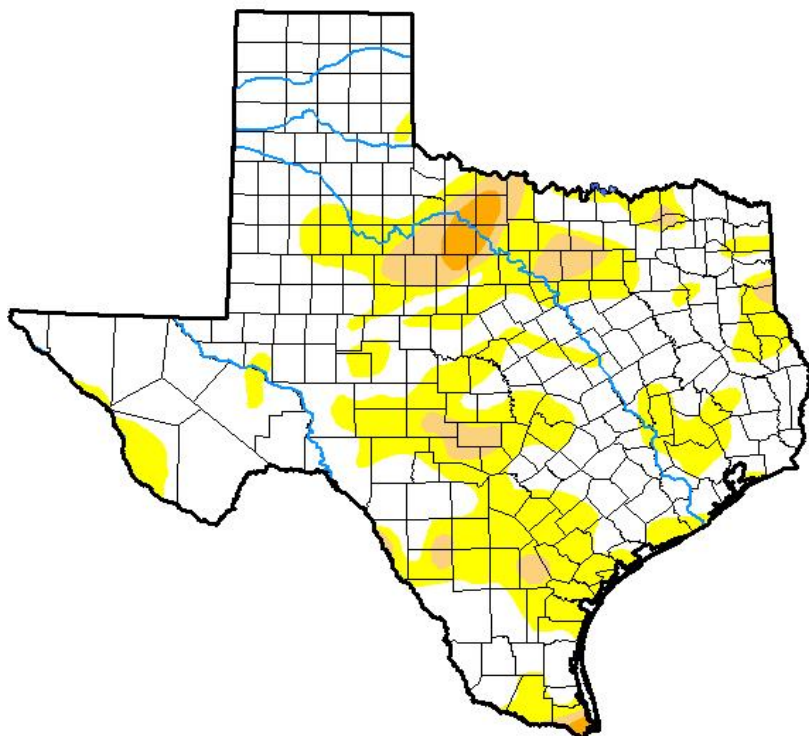


Seven Day Observed Regional Precipitation, May 21, 2017.



Source: National Weather Service, www.nws.noaa.gov

Drought Monitor, Valid May 16, 2017.



Drought Conditions (Percent Area)

	None	D0-D4	D1-D4	D2-D4	D3-D4	D4
Current	65.58	34.42	6.15	1.20	0.00	0.00
Last Week <i>05-09-2017</i>	78.86	21.14	2.33	0.00	0.00	0.00
3 Months Ago <i>02-14-2017</i>	88.14	11.86	3.69	1.26	0.53	0.00
Start of Calendar Year <i>01-03-2017</i>	81.50	18.50	6.29	1.97	0.04	0.00
Start of Water Year <i>09-27-2016</i>	94.83	5.17	0.62	0.00	0.00	0.00
One Year Ago <i>05-17-2016</i>	97.40	2.60	0.09	0.00	0.00	0.00

Intensity:

- D0 Abnormally Dry
- D1 Moderate Drought
- D2 Severe Drought
- D3 Extreme Drought
- D4 Exceptional Drought

The Drought Monitor focuses on broad-scale conditions. Local conditions may vary. See accompanying text summary for forecast statements.

Author:

Brad Rippey
U.S. Department of Agriculture



Source: National Drought Mitigation Center, a partnership with USDA, U.S. Department of Commerce/NOAA, <http://droughtmonitor.unl.edu>