



Texas Crop Progress and Condition

Southern Plains Regional Field Office
Post Office Box 70 Austin, Texas 78767
(800) 626-3142 · FAX (855) 270-2725 · www.nass.usda.gov/tx

Issue: TX-CW1817

Weekly Summary for May 22-May 28

Released: May 30, 2017

Many areas of the state experienced strong thunderstorms, with reports of damaging hail and high winds. East Texas, the Upper Coast, South and Central Texas, the Coastal Bend and the Lower Valley received 0.5 to 3.0 inches of rain, with isolated areas reporting upwards of 5.0 inches of precipitation during the week. There were 5.5 days suitable for fieldwork.

Small Grains: Hail during the previous week damaged wheat fields in the Cross Timbers and the Northern Low Plains, while storms and high winds damaged fields in the Blacklands. Harvest kicked off in a few areas of the High Plains but was slowed by wet conditions in other areas of the state. Farmers in the Blacklands were concerned with the difficulties that the wet weather might cause during harvest. Wheat and oats condition was mostly fair to good statewide.

Row Crops: Winds and hail affected corn, sorghum and cotton in South Central Texas as well as isolated areas of the Upper Coast. Producers commented that cotton in the High Plains has been slow to emerge due to cooler temperatures. Armyworms were reported in rice fields in the Upper Coast. Corn condition was mostly fair to good statewide.

Fruit, Vegetable and Specialty Crops: Vegetable harvest continued in North East Texas. However, farmers mentioned that vegetable production has been slowed due to cool nighttime temperatures. The opposite happened in the Cross Timbers, where warm nighttime temperatures were limiting production in some areas.

Livestock, Range and Pasture: Cattle were in mostly good condition across the state. Pastures responded well to recent rainfall and conditions were mostly fair to good statewide.

Crop Condition

Crop	Percent of Acreage					Index ¹	
	Excellent	Good	Fair	Poor	Very Poor	2017	2016
Corn	10	65	19	5	1	81	83
Rice	19	32	48	1	0	79	74
Sorghum	6	63	25	6	0	80	80
Wheat	3	28	52	16	1	64	71
Oats	7	32	41	13	7	65	71
Range and Pasture	9	38	40	10	3	--	--

¹ The formula for the condition index is $I = (5V + 25P + 60F + 90G + 110E)/100$ where I = crop condition index and V, P, F, G, E = percentage of crop rated very poor, poor, fair, good, excellent.

Crop Progress

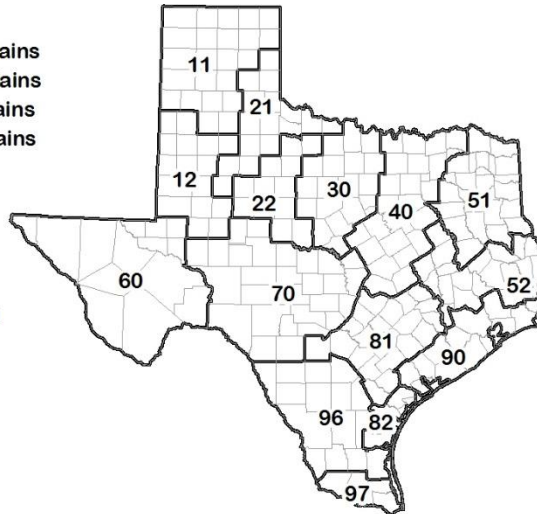
Stage	Percent of Acreage			
	Current Week	Previous Week	Previous Year	5 Year Average
Corn				
Planted	96	87	91	92
Emerged	86	76	76	82
Silked	30	20	27	29
Cotton				
Planted	52	42	42	52
Squaring	11	8	7	6
Peanuts				
Planted	72	60	74	71
Rice				
Planted	90	86	99	96
Emerged	86	84	96	93
Sorghum				
Planted	87	82	73	80
Emerged	72	65	49	47
Headed	38	35	27	31
Soybeans				
Planted	89	85	68	79
Emerged	77	74	59	66
Sunflowers				
Planted	59	53	40	62
Winter Wheat				
Harvested	22	20	10	15
Oats				
Harvested	47	45	17	29

Soil Moisture and Days Suitable by District

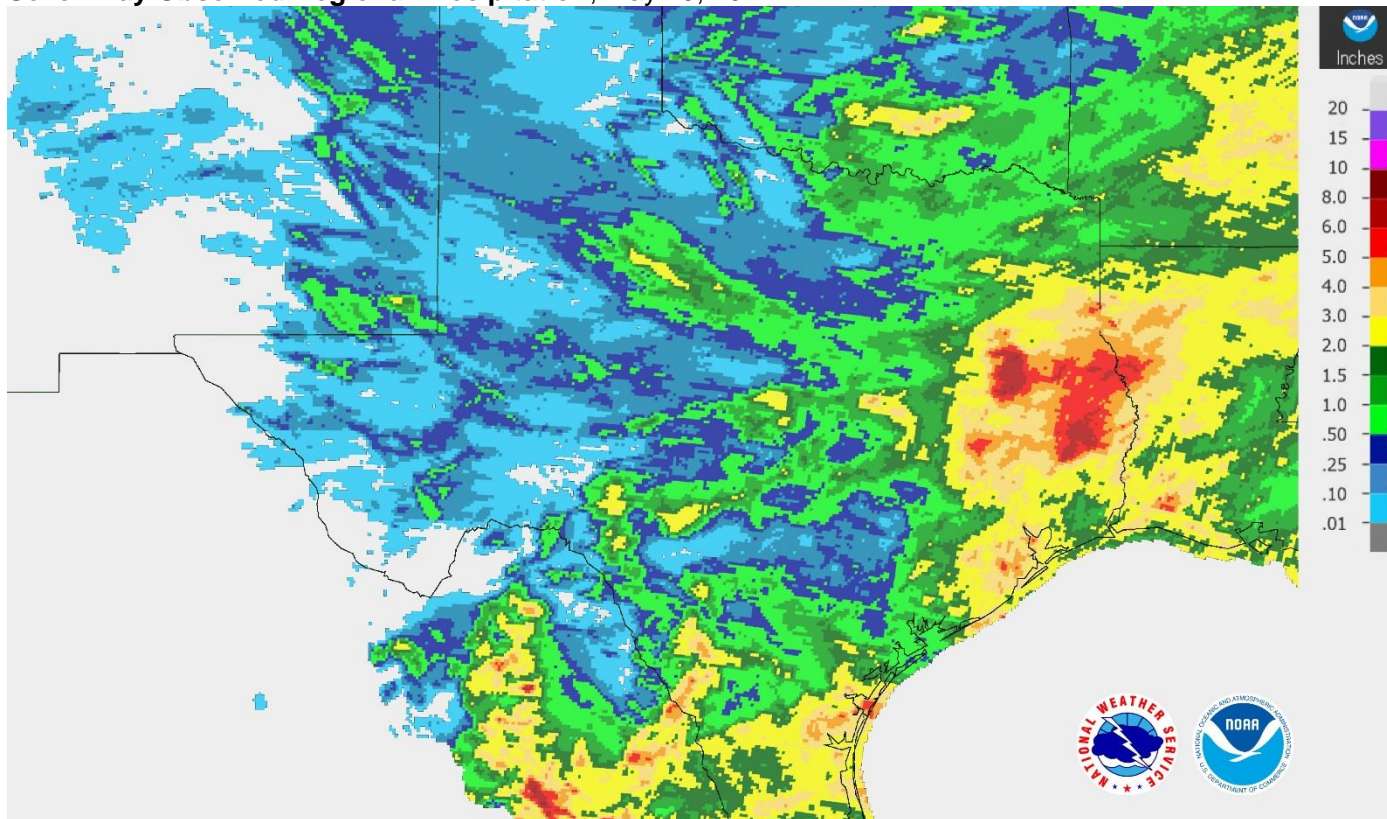
District	Topsoil Moisture Condition by District				Subsoil Moisture Condition by District				Days Suitable for Fieldwork
	Percentage of Acreage				Percentage of Acreage				
	Very Short	Short	Adequate	Surplus	Very Short	Short	Adequate	Surplus	
11	0	23	74	3	0	9	88	3	5.6
12	18	57	25	0	13	45	42	0	6.7
21	7	12	78	3	2	23	75	0	4.7
22	1	43	49	7	1	40	55	4	5.4
30	9	34	48	9	9	22	60	9	5.4
40	3	28	53	16	2	31	62	5	4.9
51	0	12	66	22	1	17	64	18	5.2
52	1	14	45	40	0	6	50	44	4.3
60	87	8	5	0	90	10	0	0	7.0
70	9	35	50	6	8	25	63	4	5.5
81	0	63	36	1	1	44	54	1	5.9
82	27	41	26	6	14	47	33	6	4.7
90	0	20	68	12	3	27	61	9	2.7
96	7	38	50	5	6	29	65	0	5.3
97	91	9	0	0	91	9	0	0	7.0
State	10	33	50	7	9	27	59	5	5.5

Texas Agricultural Districts

- 11 Northern High Plains
- 12 Southern High Plains
- 21 Northern Low Plains
- 22 Southern Low Plains
- 30 Cross Timbers
- 40 Blacklands
- 51 North East
- 52 South East
- 60 Trans-Pecos
- 70 Edwards Plateau
- 81 South Central
- 82 Coaster Bend
- 90 Upper Coast
- 96 South
- 97 Lower Valley

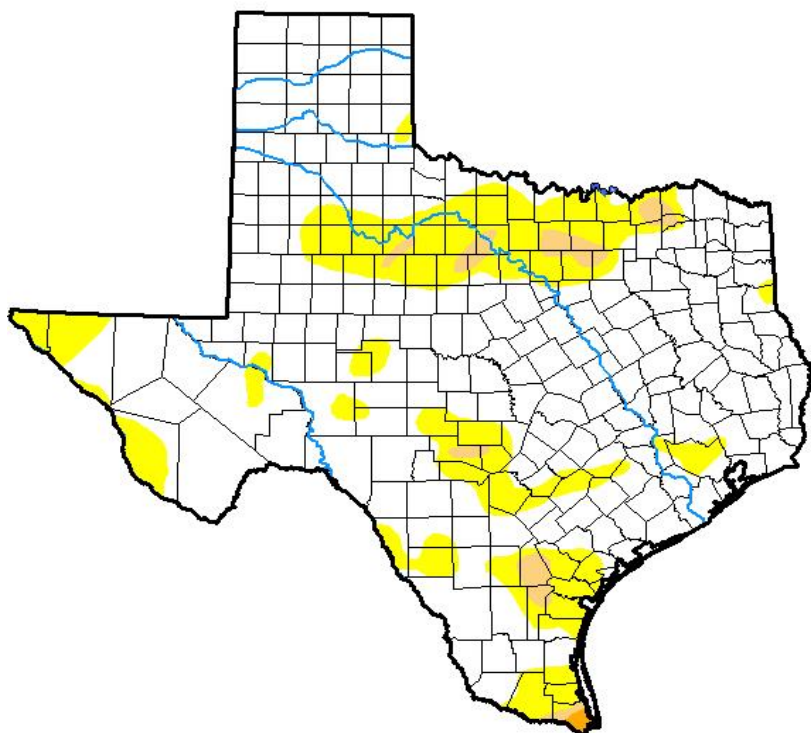


Seven Day Observed Regional Precipitation, May 29, 2017.



Source: National Weather Service, www.nws.noaa.gov

Drought Monitor, Valid May 23, 2017.



Drought Conditions (Percent Area)

	None	D0-D4	D1-D4	D2-D4	D3-D4	D4
Current	77.70	22.30	2.41	0.19	0.00	0.00
Last Week <i>05-16-2017</i>	65.58	34.42	6.15	1.20	0.00	0.00
3 Months Ago <i>02-21-2017</i>	91.57	8.43	2.07	0.82	0.00	0.00
Start of Calendar Year <i>01-03-2017</i>	81.50	18.50	6.29	1.97	0.04	0.00
Start of Water Year <i>09-27-2016</i>	94.83	5.17	0.62	0.00	0.00	0.00
One Year Ago <i>05-24-2016</i>	97.30	2.70	0.00	0.00	0.00	0.00

Intensity:

- D0 Abnormally Dry
- D1 Moderate Drought
- D2 Severe Drought
- D3 Extreme Drought
- D4 Exceptional Drought

The Drought Monitor focuses on broad-scale conditions. Local conditions may vary. See accompanying text summary for forecast statements.

Author:

Brad Rippey
U.S. Department of Agriculture



Source: National Drought Mitigation Center, a partnership with USDA, U.S. Department of Commerce/NOAA, <http://droughtmonitor.unl.edu>