



Texas Crop Progress and Condition

Southern Plains Regional Field Office

Post Office Box 70 Austin, Texas 78767

(800) 626-3142 · FAX (855) 270-2725 · www.nass.usda.gov/tx

Issue: TX-CW1917

Weekly Summary for May 29-June 4

Released: June 5, 2017

All areas of the state experienced measurable rainfall last week. Areas of the Cross Timbers, Edwards Plateau, Trans-Pecos, and South Texas reported rainfall totals from 1.0 to 5.0 inches. The Coastal Bend, Southern Low Plains, and East Texas received from 1.5 to 6.0 inches. Most of the rest of the state received from 0.5 to 3.0 inches. Flooding and small amounts of hail damage was reported in areas of the Cross Timbers. There were 5.5 days suitable for fieldwork.

Small Grains: Wheat harvest was in full swing across the Plains and nearing completion in areas of the Blacklands, Edwards Plateau, and South Central Texas. Heavy rains halted wheat harvest in areas of South Texas, but only a few areas remained to be harvested.

Row Crops: Cotton planting was delayed in areas of the Low Plains and North East Texas due to wet conditions. Thrip infestations were detected in seedling cotton in the Northern High Plains. Corn and sorghum planting were underway in the Northern Low Plains. Peanut planting continued in South Texas as weather conditions allowed.

Fruit, Vegetable and Specialty Crops: Development of onions, watermelons, and cantaloupes progressed well in South Texas. Vegetable harvest was underway in North East Texas.

Livestock, Range and Pasture: Livestock remain in good condition. Pasture condition varied greatly throughout the state, depending on recent rainfall. In many areas, grasses continued to improve providing good grazing conditions. Pastures in the East Texas were saturated, delaying hay harvest.

Crop Progress

Stage	Percent of Acreage			
	Current Week	Previous Week	Previous Year	5 Year Average
Corn				
Emerged	89	86	88	91
Silked	38	30	34	38
Cotton				
Planted	73	52	62	72
Squaring	13	11	8	8
Peanuts				
Planted	91	72	85	86
Rice				
Planted	100	90	100	97
Emerged	100	86	100	95
Sorghum				
Planted	92	87	81	84
Headed	44	38	34	37
Coloring	12	N/A	13	12
Soybeans				
Planted	92	89	82	87
Emerged	79	77	74	77
Blooming	5	N/A	2	6
Sunflowers				
Planted	65	59	62	78
Winter Wheat				
Harvested	58	22	15	23
Oats				
Harvested	78	47	20	41

N/A Not available.

Crop Condition

Crop	Percent of Acreage					Index ¹	
	Excellent	Good	Fair	Poor	Very Poor	2017	2016
Corn	11	68	16	4	1	82	82
Cotton	6	47	39	8	0	74	67
Peanuts	6	71	22	1	0	84	79
Rice	16	62	22	0	0	79	74
Sorghum	3	68	28	1	0	80	79
Soybeans	18	52	24	5	1	82	76
Wheat	3	33	49	14	1	64	71
Oats	7	40	34	15	4	65	68
Range and Pasture	9	42	37	9	3	--	--

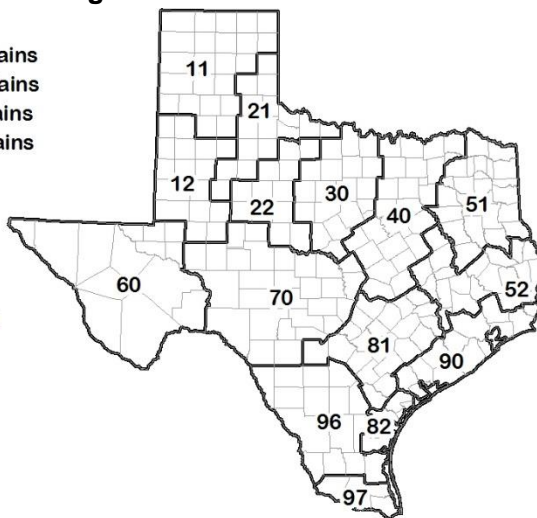
¹ The formula for the condition index is $I = (5V + 25P + 60F + 90G + 110E)/100$ where I = crop condition index and V, P, F, G, E = percentage of crop rated very poor, poor, fair, good, excellent.

Soil Moisture and Days Suitable by District

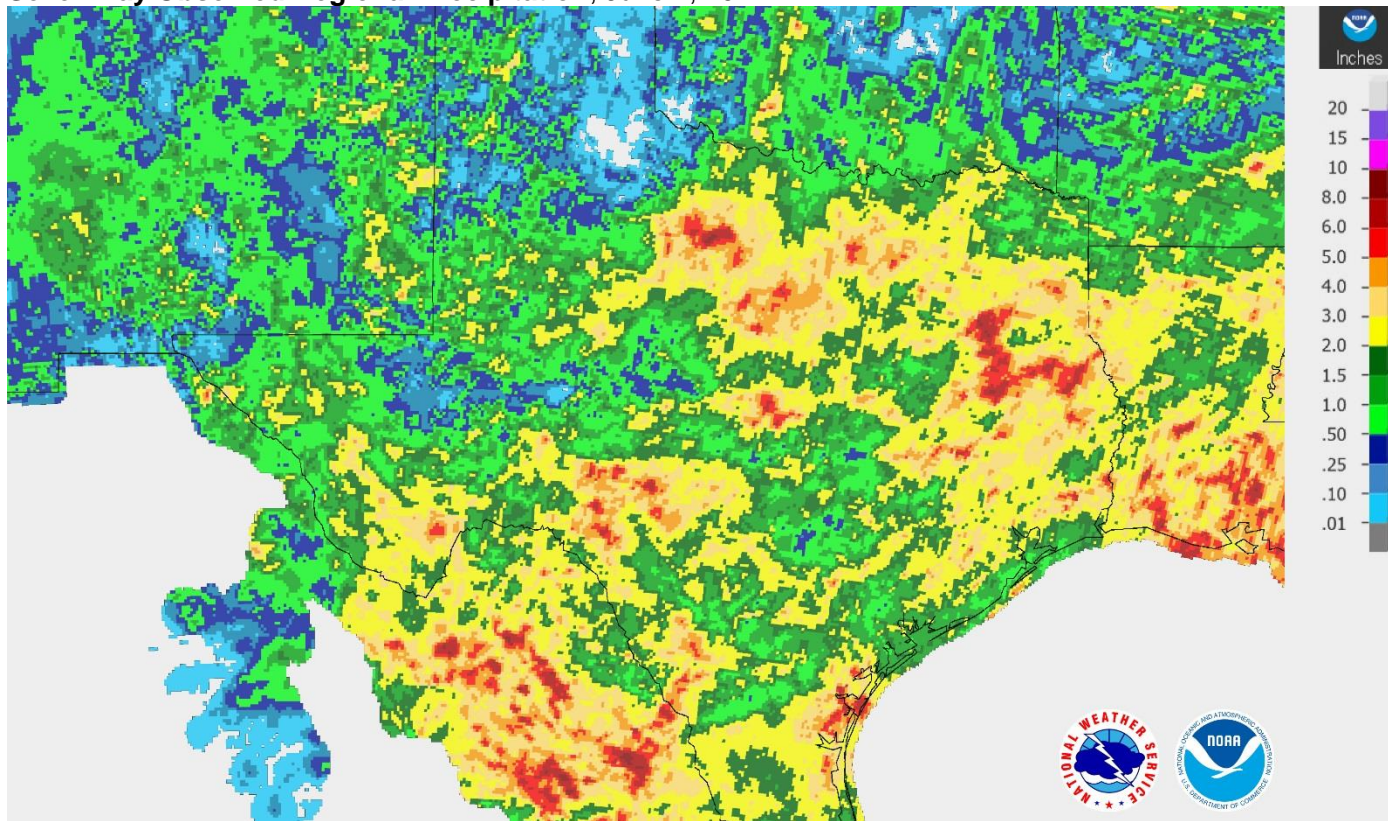
District	Topsoil Moisture Condition by District				Subsoil Moisture Condition by District				Days Suitable for Fieldwork
	Percentage of Acreage				Percentage of Acreage				
	Very Short	Short	Adequate	Surplus	Very Short	Short	Adequate	Surplus	
11	8	25	64	3	0	22	75	3	6.7
12	13	37	46	4	13	43	40	4	6.1
21	13	29	56	2	4	31	65	0	5.6
22	1	27	58	14	1	28	66	5	4.4
30	7	21	54	18	7	20	57	16	5.0
40	3	14	53	30	3	20	67	10	4.3
51	0	10	72	18	0	17	67	16	5.1
52	0	4	66	30	0	5	67	28	4.9
60	46	13	41	0	60	20	20	0	7.0
70	4	20	58	18	6	8	80	6	5.4
81	0	30	69	1	2	32	65	1	5.5
82	0	0	100	0	0	25	75	0	5.0
90	0	9	62	29	4	11	54	31	3.6
96	4	16	62	18	4	16	67	13	3.4
97	19	19	62	0	19	19	62	0	7.0
State	7	23	59	11	5	25	63	7	5.5

Texas Agricultural Districts

- 11 Northern High Plains
- 12 Southern High Plains
- 21 Northern Low Plains
- 22 Southern Low Plains
- 30 Cross Timbers
- 40 Blacklands
- 51 North East
- 52 South East
- 60 Trans-Pecos
- 70 Edwards Plateau
- 81 South Central
- 82 Coaster Bend
- 90 Upper Coast
- 96 South
- 97 Lower Valley

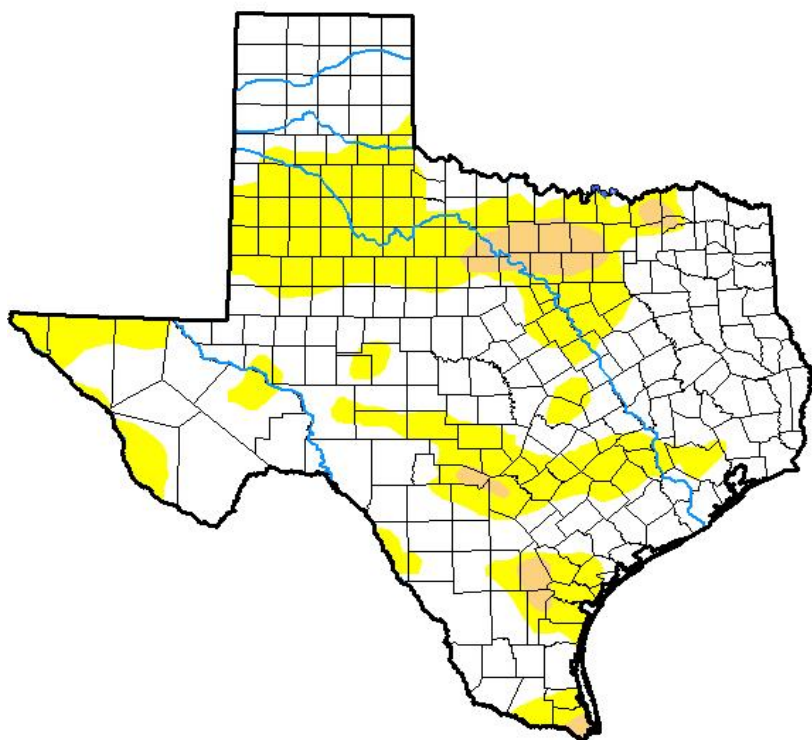


Seven Day Observed Regional Precipitation, June 4, 2017.



Source: National Weather Service, www.nws.noaa.gov

Drought Monitor, Valid May 30, 2017.



Drought Conditions (Percent Area)

	None	D0-D4	D1-D4	D2-D4	D3-D4	D4
Current	65.50	34.50	3.70	0.00	0.00	0.00
Last Week <i>05-23-2017</i>	77.70	22.30	2.41	0.19	0.00	0.00
3 Months Ago <i>02-28-2017</i>	75.50	24.50	3.93	1.01	0.00	0.00
Start of Calendar Year <i>01-03-2017</i>	81.50	18.50	6.29	1.97	0.04	0.00
Start of Water Year <i>09-27-2016</i>	94.83	5.17	0.62	0.00	0.00	0.00
One Year Ago <i>05-31-2016</i>	98.62	1.38	0.00	0.00	0.00	0.00

Intensity:

- D0 Abnormally Dry
- D1 Moderate Drought
- D2 Severe Drought
- D3 Extreme Drought
- D4 Exceptional Drought

The Drought Monitor focuses on broad-scale conditions. Local conditions may vary. See accompanying text summary for forecast statements.

Author:

Chris Fenimore
NCEI/NESDIS/NOAA



Source: National Drought Mitigation Center, a partnership with USDA, U.S. Department of Commerce/NOAA, <http://droughtmonitor.unl.edu>