



Texas Crop Progress and Condition

Southern Plains Regional Field Office
Post Office Box 70 Austin, Texas 78767
(800) 626-3142 · FAX (855) 270-2725 · www.nass.usda.gov/tx

Issue: TX-CW2117

Weekly Summary for June 12-June 18

Released: June 19, 2017

Areas of the High and Low Plains, the Trans-Pecos, and East Texas received up to 1.5 inches of rainfall while the rest of state recorded less than an inch. There were 6.6 days suitable for fieldwork.

Small Grains: Wheat harvest continued in areas of the Plains, the Blacklands and North East Texas. Small grain harvest was nearing completion in most of the state, while areas of the Northern High Plains progressed quickly.

Row Crops: Poor stands due to hail and slow emergence of cotton were reported in some areas of the Southern High Plains. Cotton in South Texas had begun setting bolls. Spider mites were seen in cotton fields of the Blacklands. Corn producers in the Southern High Plains were concerned with the adverse effect high temperatures could have on pollination. Some corn producers sprayed for rust in the Upper Coast. In South Texas, corn was maturing and sorghum was turning color. Producers in South Texas and the Lower Valley were expecting to start sorghum harvest in the next two weeks. Sorghum was being planted behind wheat in the Northern High Plains. Heat stress on sorghum was reported in the Blacklands, the Trans-Pecos and the Southern High Plains.

Fruit, Vegetable and Specialty Crops: Vegetable and fruit harvests continued in North East Texas.

Livestock, Range and Pasture: Livestock was mostly in good condition across the state. Pasture and range condition was mostly fair to good. However, conditions were declining fast in areas of the Lower Valley, the Low Plains and Central and South Texas, raising the threat of wildfires.

Crop Progress

Stage	Percent of Acreage			
	Current Week	Previous Week	Previous Year	5 Year Average
Corn				
Silked	53	52	41	51
Dough	18	(NA)	12	18
Dented	4	(NA)	6	6
Cotton				
Planted	91	89	93	94
Squaring	17	14	14	14
Setting Bolls	6	3	4	5
Peanuts				
Pegging	1	(NA)	6	3
Rice				
Headed	10	1	18	10
Sorghum				
Headed	52	49	40	48
Coloring	32	25	26	29
Mature	6	(NA)	8	8
Soybeans				
Emerged	90	86	86	90
Blooming	42	20	16	23
Sunflowers				
Planted	80	70	84	90
Winter Wheat				
Harvested	74	72	52	58
Oats				
Harvested	84	82	66	77

(NA) Not available.

Crop Condition

Crop	Percent of Acreage					Index ¹	
	Excellent	Good	Fair	Poor	Very Poor	2017	2016
Corn	15	59	22	3	1	84	83
Cotton	7	43	42	6	2	73	72
Peanuts	7	60	32	1	0	74	81
Rice	16	65	19	0	0	93	74
Sorghum	8	51	36	5	0	78	81
Soybeans	25	47	24	4	0	85	78
Wheat	3	33	49	14	1	64	70
Oats	7	40	34	15	4	64	68
Range and Pasture	10	43	34	11	2	--	--

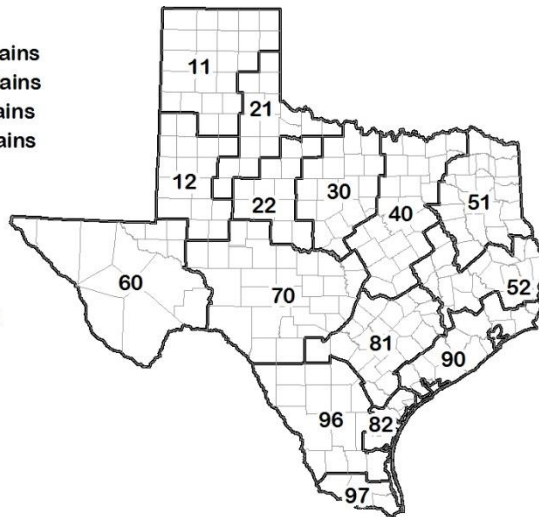
¹ The formula for the condition index is $I = (5V + 25P + 60F + 90G + 110E)/100$ where I = crop condition index and V, P, F, G, E = percentage of crop rated very poor, poor, fair, good, excellent.

Soil Moisture and Days Suitable by District

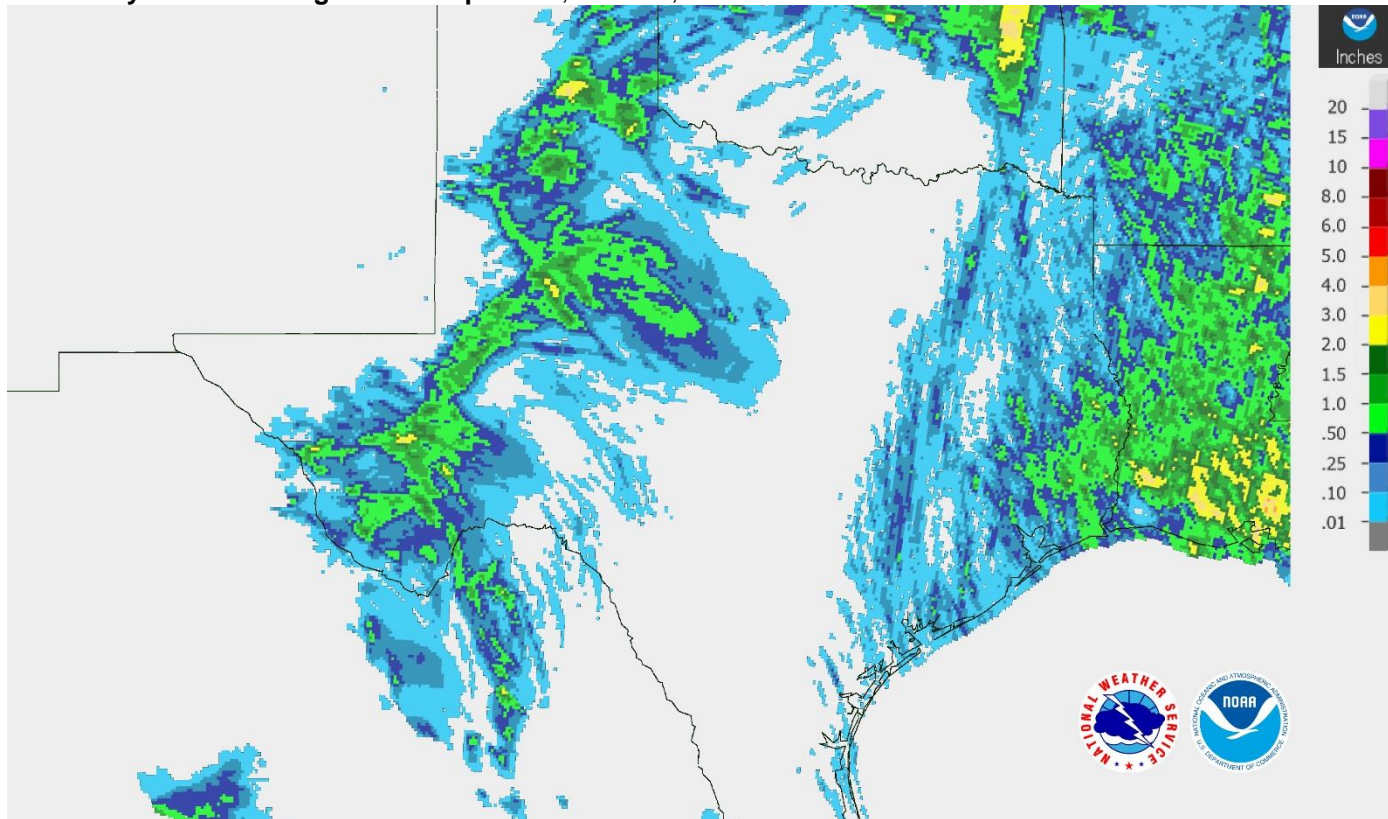
District	Topsoil Moisture Condition by District				Subsoil Moisture Condition by District				Days Suitable for Fieldwork
	Percentage of Acreage				Percentage of Acreage				
	Very Short	Short	Adequate	Surplus	Very Short	Short	Adequate	Surplus	
11	12	41	45	2	10	29	61	0	6.6
12	16	54	30	0	15	48	37	0	6.6
21	16	35	49	0	7	54	39	0	7.0
22	3	41	53	3	3	39	56	2	6.2
30	1	16	76	7	1	17	65	17	6.2
40	3	25	64	8	9	24	65	2	6.7
51	0	16	71	13	1	20	67	12	6.5
52	4	11	84	1	4	12	83	1	6.7
60	8	18	74	0	7	16	76	1	6.6
70	8	49	43	0	6	29	65	0	7.0
81	8	62	30	0	4	66	30	0	6.7
82	0	50	50	0	0	30	70	0	7.0
90	1	22	68	9	1	20	67	12	6.4
96	19	26	55	0	8	36	56	0	6.9
97	66	34	0	0	66	11	23	0	7.0
State	11	38	48	3	10	33	55	2	6.6

Texas Agricultural Districts

- 11 Northern High Plains
- 12 Southern High Plains
- 21 Northern Low Plains
- 22 Southern Low Plains
- 30 Cross Timbers
- 40 Blacklands
- 51 North East
- 52 South East
- 60 Trans-Pecos
- 70 Edwards Plateau
- 81 South Central
- 82 Coaster Bend
- 90 Upper Coast
- 96 South
- 97 Lower Valley

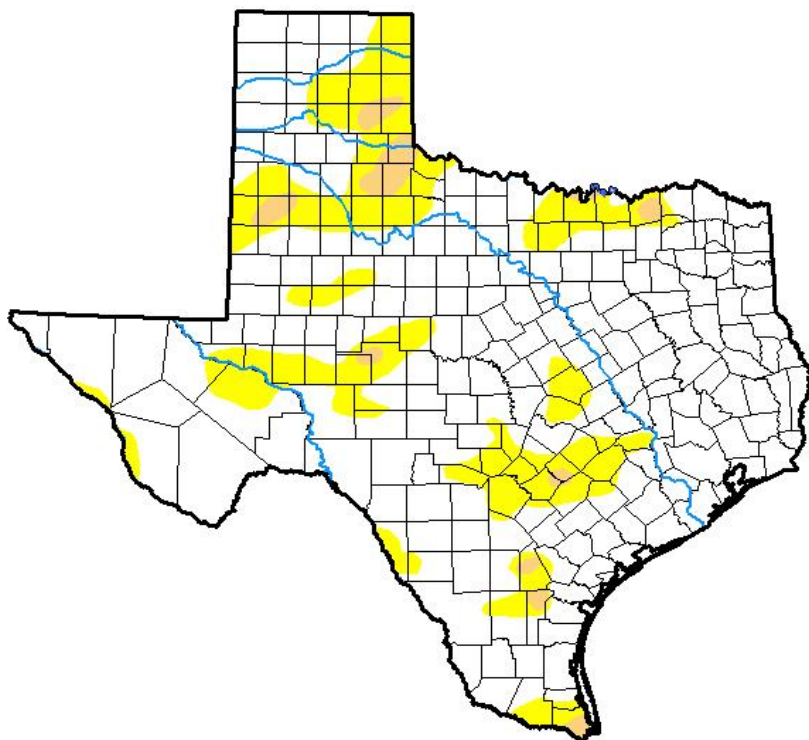


Seven Day Observed Regional Precipitation, June 18, 2017.



Source: National Weather Service, www.nws.noaa.gov

Drought Monitor, Valid June 13, 2017.



Drought Conditions (Percent Area)

	None	D0-D4	D1-D4	D2-D4	D3-D4	D4
Current	78.23	21.77	2.47	0.00	0.00	0.00
Last Week <i>06-06-2017</i>	83.43	16.57	1.16	0.00	0.00	0.00
3 Months Ago <i>03-14-2017</i>	65.12	34.88	4.52	0.93	0.00	0.00
Start of Calendar Year <i>01-03-2017</i>	81.50	18.50	6.29	1.97	0.04	0.00
Start of Water Year <i>09-27-2016</i>	94.83	5.17	0.62	0.00	0.00	0.00
One Year Ago <i>06-14-2016</i>	98.62	1.38	0.00	0.00	0.00	0.00

Intensity:

- D0 Abnormally Dry
- D1 Moderate Drought
- D2 Severe Drought
- D3 Extreme Drought
- D4 Exceptional Drought

The Drought Monitor focuses on broad-scale conditions. Local conditions may vary. See accompanying text summary for forecast statements.

Author:

David Miskus
NOAA/NWS/NCEP/CPC



Source: National Drought Mitigation Center, a partnership with USDA, U.S. Department of Commerce/NOAA, <http://droughtmonitor.unl.edu>