



# Texas Crop Progress and Condition

Southern Plains Regional Field Office  
Post Office Box 70 Austin, Texas 78767  
(800) 626-3142 · FAX (855) 270-2725 · [www.nass.usda.gov/tx](http://www.nass.usda.gov/tx)

**Issue: TX-CW2217**

**Weekly Summary for June 19-June 25**

**Released: June 26, 2017**

Hot temperatures affected most of the state. Temperatures as high as 115 degrees were measured in the Trans Pecos. Rainfall varied across the state. East Texas, Central Texas and the Panhandle received the most rainfall, averaging between 1.0 and 2.0 inches of precipitation, with isolated areas in East Texas reporting upwards 5.0 inches of rain. There were 6.0 days suitable for fieldwork.

**Small Grains:** Wheat harvest continued in areas of the Northern High Plains. The rest of the state was almost done with small grains harvest.

**Row Crops:** High winds and blowing sand were taking a toll on cotton seedlings in the Northern High Plains. Early planted irrigated cotton was entering the squaring stage in the Southern High Plains. Lack of moisture in areas of the Northern Low Plains was affecting cotton emergence and causing serious damage to emerged plants. Some cotton fields in the Upper Coast were having worm issues. Corn was tasseling in the Northern High Plains. Corn silage harvest was in full swing in the Cross Timbers. Dryland sorghum was being planted in the Northern High Plains. Sorghum was coloring in the Blacklands and the Upper Coast. Sorghum harvest was underway in the Coastal Bend. Worm infestations damaged soybeans in scattered areas of the Blacklands.

**Fruit, Vegetable and Specialty Crops:** Okra, beans and peas were being harvested in North East Texas.

**Livestock, Range and Pasture:** Livestock was mostly in good condition across the state. Producers in the Northern High Plains were continuing to discover respiratory complications in cattle affected by the large wildfires in early March. Flies and other insects were becoming a problem for livestock in North East Texas, the Cross Timbers and the Blacklands. Pasture and range condition was mostly fair to good. Wildfire was a concern in the Low Plains. Feral Hogs were damaging the corn fields in North East Texas.

### Crop Condition

Crop	Percent of Acreage					Index <sup>1</sup>	
	Excellent	Good	Fair	Poor	Very Poor	2017	2016
Corn	14	56	25	5	0	82	83
Cotton	9	37	41	11	2	71	74
Peanuts	4	52	44	0	0	78	81
Rice	12	53	35	0	0	82	74
Sorghum	15	45	37	3	0	80	81
Soybeans	24	45	27	4	0	84	79
Wheat	3	33	49	14	1	66	70
Oats	7	40	34	15	4	68	64
Range and Pasture	8	42	35	12	3	--	--

<sup>1</sup> The formula for the condition index is  $I = (5V + 25P + 60F + 90G + 110E)/100$  where I = crop condition index and V, P, F, G, E = percentage of crop rated very poor, poor, fair, good, excellent.

### Crop Progress

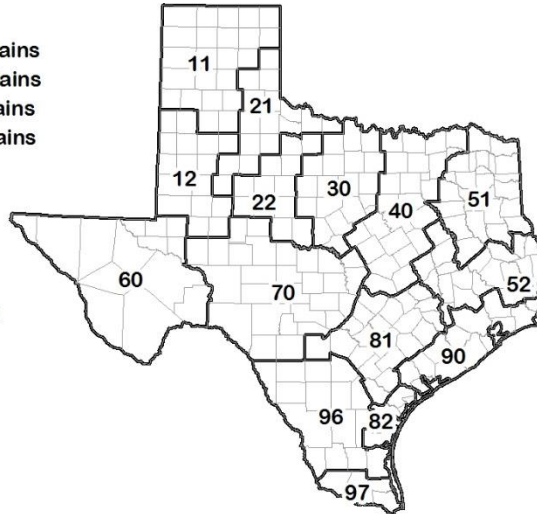
Stage	Percent of Acreage			
	Current Week	Previous Week	Previous Year	5 Year Average
<b>Corn</b>				
Silked	56	53	45	55
Dough	40	18	32	33
Dented	25	4	23	18
<b>Cotton</b>				
Planted	97	91	97	98
Squaring	29	17	17	20
Setting Bolls	9	6	7	7
<b>Peanuts</b>				
Pegging	8	1	12	8
<b>Rice</b>				
Headed	29	10	36	23
<b>Sorghum</b>				
Headed	59	52	55	55
Coloring	41	32	35	36
Mature	22	6	17	17
Harvested	4	N/A	3	2
<b>Soybeans</b>				
Emerged	95	90	95	93
Blooming	50	42	28	33
<b>Sunflowers</b>				
Planted	88	80	89	92
<b>Winter Wheat</b>				
Harvested	87	74	76	73
<b>Oats</b>				
Harvested	90	84	80	88

### Soil Moisture and Days Suitable by District

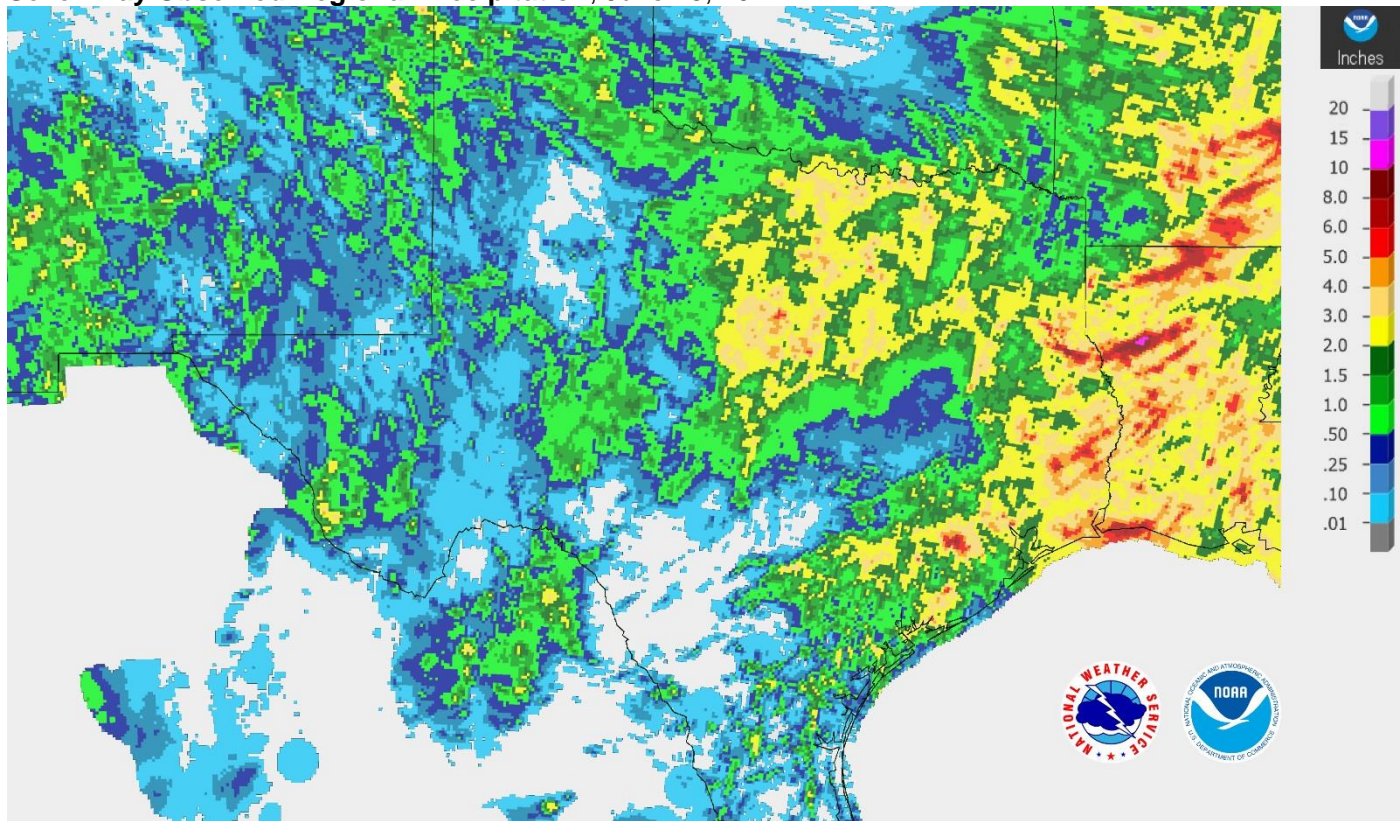
District	Topsoil Moisture Condition by District				Subsoil Moisture Condition by District				Days Suitable for Fieldwork
	Percentage of Acreage				Percentage of Acreage				
	Very Short	Short	Adequate	Surplus	Very Short	Short	Adequate	Surplus	
11	17	56	27	0	13	35	52	0	6.4
12	7	55	32	6	8	52	40	0	6.4
21	56	32	12	0	29	35	36	0	6.3
22	6	45	44	5	3	43	50	4	6.1
30	6	27	61	6	7	25	58	10	5.9
40	2	23	58	17	7	20	60	13	5.3
51	0	16	70	14	0	24	63	13	5.8
52	2	31	64	3	3	28	66	3	6.3
60	32	22	46	0	32	21	47	0	6.7
70	35	32	32	1	9	37	54	0	7.0
81	5	67	27	1	1	72	27	0	6.4
82	23	45	19	13	23	29	35	13	6.3
90	3	15	67	15	2	15	68	15	3.8
96	22	24	54	0	9	32	59	0	6.9
97	66	34	0	0	66	11	23	0	7.0
State	15	40	39	6	11	35	50	4	6.1

### Texas Agricultural Districts

- 11 Northern High Plains
- 12 Southern High Plains
- 21 Northern Low Plains
- 22 Southern Low Plains
- 30 Cross Timbers
- 40 Blacklands
- 51 North East
- 52 South East
- 60 Trans-Pecos
- 70 Edwards Plateau
- 81 South Central
- 82 Coaster Bend
- 90 Upper Coast
- 96 South
- 97 Lower Valley

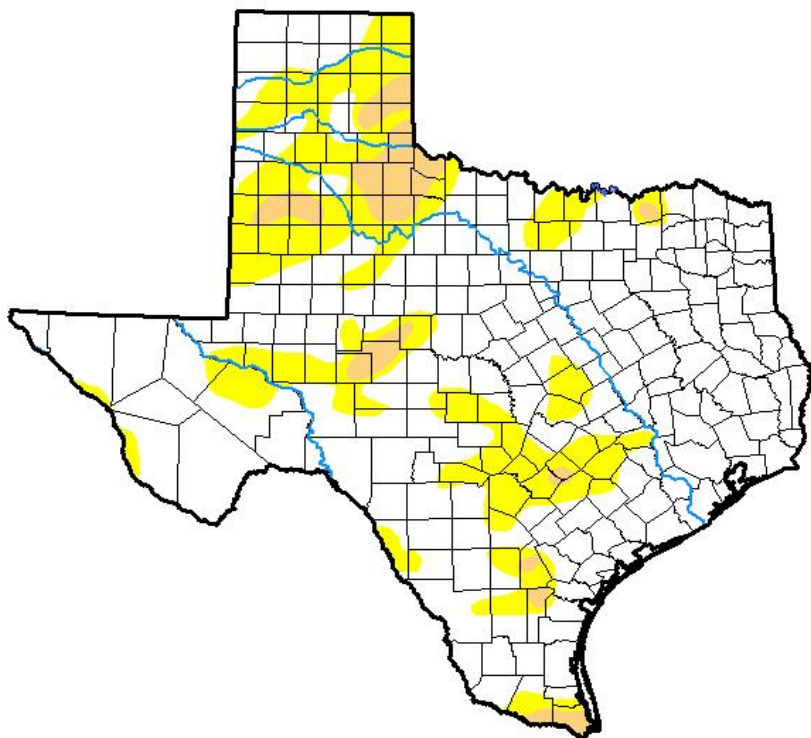


**Seven Day Observed Regional Precipitation, June 25, 2017.**



Source: National Weather Service, [www.nws.noaa.gov](http://www.nws.noaa.gov)

**Drought Monitor, Valid June 20, 2017.**



*Drought Conditions (Percent Area)*

	None	D0-D4	D1-D4	D2-D4	D3-D4	D4
<b>Current</b>	72.65	27.35	4.84	0.00	0.00	0.00
<b>Last Week</b> <i>06-13-2017</i>	78.23	21.77	2.47	0.00	0.00	0.00
<b>3 Months Ago</b> <i>03-21-2017</i>	53.46	46.54	8.63	0.93	0.00	0.00
<b>Start of Calendar Year</b> <i>01-03-2017</i>	81.50	18.50	6.29	1.97	0.04	0.00
<b>Start of Water Year</b> <i>09-27-2016</i>	94.83	5.17	0.62	0.00	0.00	0.00
<b>One Year Ago</b> <i>06-21-2016</i>	98.62	1.38	0.00	0.00	0.00	0.00

Intensity:

- D0 Abnormally Dry
- D1 Moderate Drought
- D2 Severe Drought
- D3 Extreme Drought
- D4 Exceptional Drought

*The Drought Monitor focuses on broad-scale conditions. Local conditions may vary. See accompanying text summary for forecast statements.*

Author:

David Miskus  
NOAA/NWS/NCEP/CPC



Source: National Drought Mitigation Center, a partnership with USDA, U.S. Department of Commerce/NOAA, <http://droughtmonitor.unl.edu>

**Texas Crop Progress and Condition (26 June 2017)**

USDA, National Agricultural Statistics Service, Southern Plains Regional Field Office