



# Texas Crop Progress and Condition

Southern Plains Regional Field Office  
Post Office Box 70 Austin, Texas 78767  
(800) 626-3142 · FAX (855) 270-2725 · [www.nass.usda.gov/tx](http://www.nass.usda.gov/tx)

**Issue: TX-CW2417**

**Weekly Summary for July 3-July 9**

**Released: July 10, 2017**

Cooler temperatures were experienced across the state early in the week. As the week progressed, most areas of the state reported scattered showers, with isolated reports of heavy rain. Areas of the Edwards Plateau, Blacklands, and Northeast Texas received up to 6.0 inches of rainfall, while the rest of the state experienced from trace amounts to upwards of 2.0 inches of precipitation.

**Small Grains:** Winter wheat harvest neared completion throughout the state. Field work in areas of the Blacklands and Northeast Texas was slowed due to heavy rainfall received this week

**Row Crops:** Hail and high temperatures in the Northern Low Plains damaged cotton in some areas. Cotton continued to emerge in the Southern Low Plains. Irrigation on cotton was in full swing in areas of Southeast Texas, while cotton in South Texas and South Central Texas was setting bolls. Corn was drying down in areas of the Blacklands, South Central, and Southeast Texas, while producers began harvesting in the Upper Coast and South Texas. Harvest progressed well in the Lower Valley. Sorghum harvest was in full swing in areas of the Coastal Bend, Upper Coast, South Texas, and the Lower Valley. Peanuts were progressing well in the Southern Low Plains and entered the pegging stage in South Texas. Soybeans progressed well in areas of the Blacklands.

**Fruit, Vegetable, and Specialty Crops:** Harvest of warm season vegetables continued in North East Texas but pea growers reported heat stress. The pecan crop progressed well in areas of the Trans-Pecos and the Southern High Plains. Watermelon and cantaloupe harvest was active in a few areas of South Texas.

**Livestock, Range and Pasture:** Livestock was in good condition throughout the state. In the Cross Timbers, Blacklands, and Northeast Texas, livestock producers reported an abundance of forage still available for grazing on native range and pastures. Hay production activities were underway.

### Crop Condition

Crop	Percent of Acreage					Index <sup>1</sup>	
	Excellent	Good	Fair	Poor	Very Poor	2017	2016
Corn	14	53	27	6	0	81	81
Cotton	12	39	32	11	6	71	71
Peanuts	1	56	43	0	0	--	80
Rice	23	34	42	1	0	80	76
Sorghum	12	53	30	4	1	80	81
Soybeans	19	44	26	11	0	79	76
Wheat	3	33	49	14	1	66	69
Range and Pasture	12	40	36	9	3	(NA)	(NA)

(NA) Not available.

<sup>1</sup> The formula for the condition index is  $I = (5V + 25P + 60F + 90G + 110E)/100$  where I = crop condition index and V, P, F, G, E = percentage of crop rated very poor, poor, fair, good, excellent.

### Crop Progress

Stage	Percent of Acreage			
	Current Week	Previous Week	Previous Year	5 Year Average
<b>Corn</b>				
Silked	65	63	65	72
Dough	53	48	49	52
Dented	46	35	44	41
Mature	15	(NA)	17	18
<b>Cotton</b>				
Squaring	55	35	41	48
Setting Bolls	18	15	12	12
Bolls Opening	3	(NA)	1	1
<b>Peanuts</b>				
Pegging	25	15	32	30
<b>Rice</b>				
Headed	70	56	68	51
<b>Sorghum</b>				
Headed	70	68	63	61
Coloring	55	47	43	48
Mature	41	27	35	35
Harvested	24	12	18	16
<b>Soybeans</b>				
Blooming	60	53	47	52
Setting Pods	15	(NA)	5	8
<b>Sunflowers</b>				
Planted	95	90	95	96
<b>Winter Wheat</b>				
Harvested	97	93	97	93

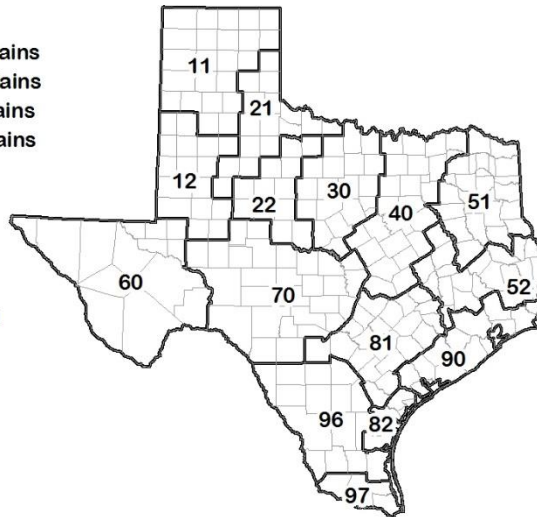
(NA) Not available.

### Soil Moisture and Days Suitable by District

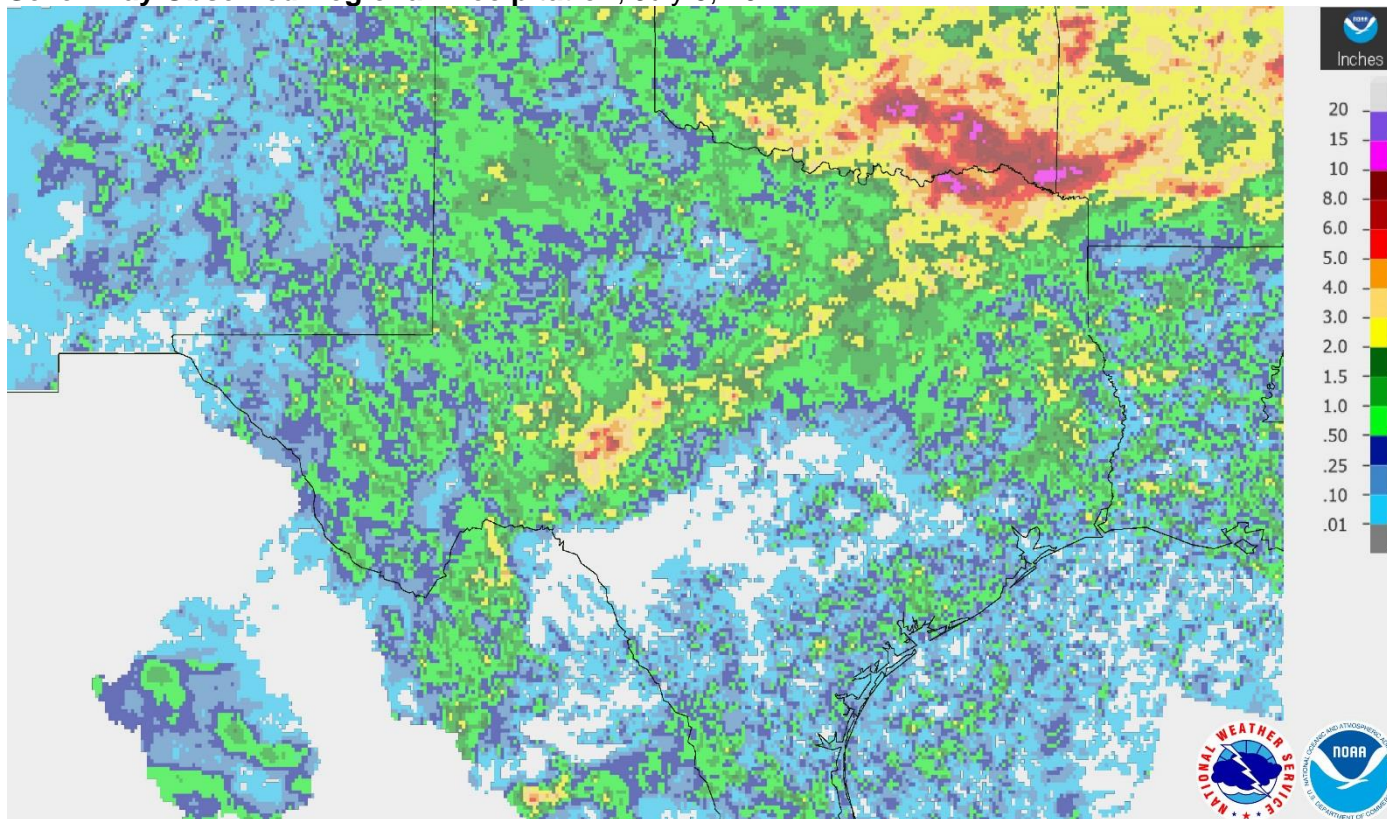
District	Topsoil Moisture Condition by District				Subsoil Moisture Condition by District				Days Suitable for Fieldwork
	Percentage of Acreage				Percentage of Acreage				
	Very Short	Short	Adequate	Surplus	Very Short	Short	Adequate	Surplus	
11	23	19	58	0	8	31	61	0	6.4
12	0	19	57	24	1	34	49	16	5.0
21	19	26	52	3	11	28	61	0	6.7
22	2	28	62	8	0	25	72	3	5.6
30	2	17	72	9	3	21	62	14	5.4
40	3	10	62	25	4	9	58	29	4.0
51	0	19	72	9	0	23	68	9	6.3
52	4	41	46	9	0	42	50	8	6.6
60	32	22	46	0	31	22	47	0	6.7
70	10	36	53	1	10	41	48	1	5.8
81	12	43	37	8	10	47	35	8	6.6
82	35	39	25	1	29	36	35	0	7.0
90	0	12	70	18	0	11	72	17	4.6
96	34	42	24	0	32	42	26	0	7.0
97	12	42	46	0	10	47	43	0	6.6
State	10	23	57	10	7	29	55	9	5.7

### Texas Agricultural Districts

- 11 Northern High Plains
- 12 Southern High Plains
- 21 Northern Low Plains
- 22 Southern Low Plains
- 30 Cross Timbers
- 40 Blacklands
- 51 North East
- 52 South East
- 60 Trans-Pecos
- 70 Edwards Plateau
- 81 South Central
- 82 Coaster Bend
- 90 Upper Coast
- 96 South
- 97 Lower Valley

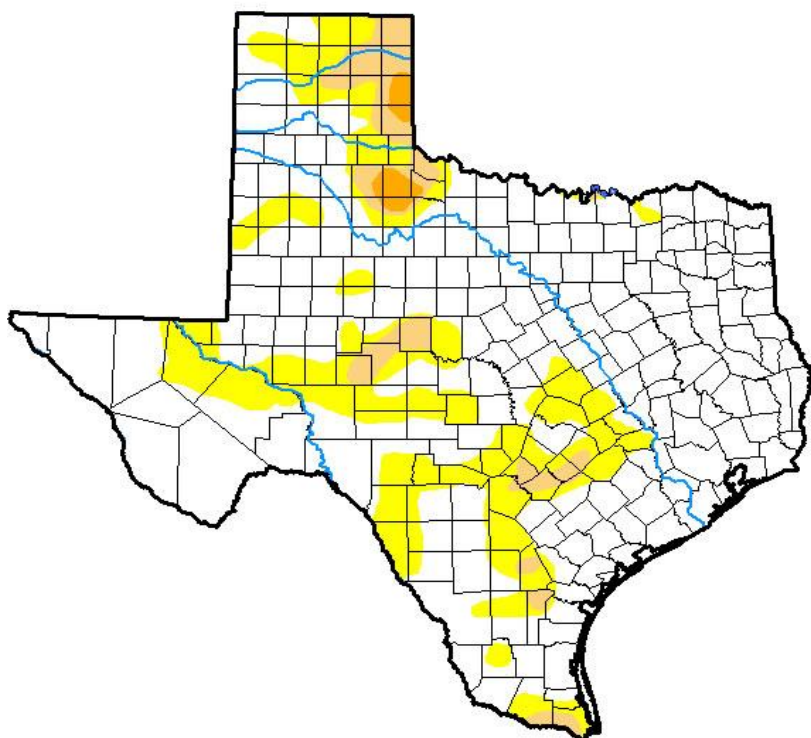


## Seven Day Observed Regional Precipitation, July 9, 2017.



Source: National Weather Service, [www.nws.noaa.gov](http://www.nws.noaa.gov)

## Drought Monitor, Valid July 4, 2017.



Drought Conditions (Percent Area)

	None	D0-D4	D1-D4	D2-D4	D3-D4	D4
<b>Current</b>	73.51	26.49	6.01	0.92	0.00	0.00
<b>Last Week</b> 06-27-2017	76.48	23.52	5.98	0.61	0.00	0.00
<b>3 Months Ago</b> 04-04-2017	82.49	17.51	2.91	0.01	0.00	0.00
<b>Start of Calendar Year</b> 01-03-2017	81.50	18.50	6.29	1.97	0.04	0.00
<b>Start of Water Year</b> 09-27-2016	94.83	5.17	0.62	0.00	0.00	0.00
<b>One Year Ago</b> 07-05-2016	97.07	2.93	0.00	0.00	0.00	0.00

**Intensity:**

- D0 Abnormally Dry
- D1 Moderate Drought
- D2 Severe Drought
- D3 Extreme Drought
- D4 Exceptional Drought

The Drought Monitor focuses on broad-scale conditions. Local conditions may vary. See accompanying text summary for forecast statements.

**Author:**

David Simeral  
Western Regional Climate Center



Source: National Drought Mitigation Center, a partnership with USDA, U.S. Department of Commerce/NOAA, <http://droughtmonitor.unl.edu>

## Texas Crop Progress and Condition (July 2017)

USDA, National Agricultural Statistics Service, Southern Plains Regional Field Office