



# Texas Crop Progress and Condition

Southern Plains Regional Field Office  
Post Office Box 70 Austin, Texas 78767  
(800) 626-3142 · FAX (855) 270-2725 · www.nass.usda.gov/tx

**Issue: TX-CW2517**

**Weekly Summary for July 10-July 16**

**Released: July 17, 2017**

The northern and central parts of the state remained relatively dry. Most of the rain was received in the Trans Pecos, South Texas, the Lower Valley, the Coastal Bend, the Upper Coast, and North and South East Texas. Rainfall in these areas averaged between 0.5 and 1.5 inches, with isolated areas receiving upwards of 4.5 inches of precipitation. There were 6.6 days suitable for fieldwork.

**Small Grains:** Producers were plowing wheat residue in areas of the Northern High Plains.

**Row Crops:** Early cotton fields in the High Plains were blooming. Some cotton fields in the Plains were behind in terms of growth. Producers in the Blacklands took advantage of the weather to do field work. Cotton was being heavily irrigated in areas of South East Texas. Cotton was filling bolls and progressing toward maturity in the Lower Valley and South Texas. Corn was in the tassel stage in the Northern High Plains. Corn harvest was rapidly approaching in the Cross Timbers, Blacklands South Central and South Texas. Sorghum harvest was underway in the Blacklands and continued in the Coastal Bend, Upper Coast, South Texas, and the Lower Valley.

**Fruit, Vegetable, and Specialty Crops:** Watermelons were being harvested in South Texas. Fruit and vegetables harvest continued in North East Texas. However, harvest slowed down a bit due to hot temperatures. Also, diseases and insect issues on vegetables were reported during the past week. Pecan orchards in South Texas were progressing well. Nut development had reached the halfway point in orchards in South Texas.

**Livestock, Range and Pasture:** Livestock was in good condition throughout the state. Horn flies continued to be an issue in North East Texas. Supplemental feeding continued in the Lower Valley. Range and pasture conditions remained fair to good across the state. The lack of rain and hot weather in the Panhandle were causing a decline in the pastures conditions.

## Crop Progress

Stage	Percent of Acreage			
	Current	Previous Week	Previous Year	5 Year Average
<b>Corn</b>				
Silked	70	65	73	78
Dough	56	53	53	59
Dented	53	46	47	49
Mature	25	15	30	31
<b>Cotton</b>				
Squaring	65	55	67	68
Setting Bolls	20	18	17	19
Bolls Opening	4	3	4	4
<b>Peanuts</b>				
Pegging	35	25	41	48
<b>Rice</b>				
Headed	81	70	81	67
<b>Sorghum</b>				
Headed	74	70	74	69
Coloring	57	55	47	55
Mature	46	41	39	43
Harvested	32	24	24	24
<b>Soybeans</b>				
Blooming	65	60	50	60
Setting Pods	20	15	18	21

### Crop Condition

Crop	Percent of Acreage					Index <sup>1</sup>	
	Excellent	Good	Fair	Poor	Very Poor	2017	2016
Corn	18	54	25	3	0	84	79
Cotton	10	39	37	13	1	72	71
Peanuts	1	56	43	0	0	77	78
Rice	21	40	38	1	0	82	76
Sorghum	9	57	26	6	2	78	81
Soybeans	15	47	30	8	0	79	76
Oats	7	40	34	15	4	68	63
Range and Pasture	9	39	37	11	4	--	--

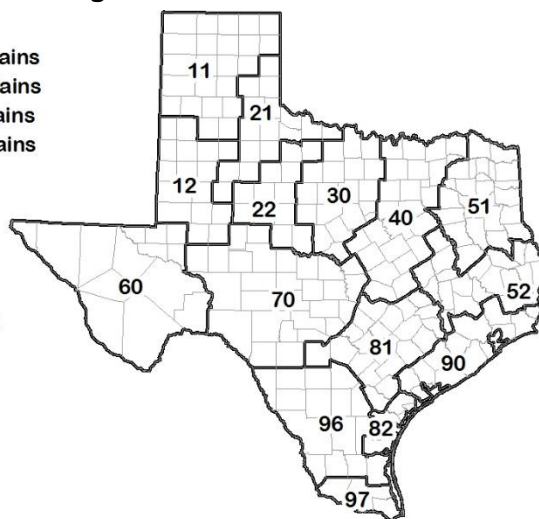
<sup>1</sup> The formula for the condition index is  $I = (5V + 25P + 60F + 90G + 110E)/100$  where I = crop condition index and V, P, F, G, E = percentage of crop rated very poor, poor, fair, good, excellent.

### Soil Moisture and Days Suitable by District

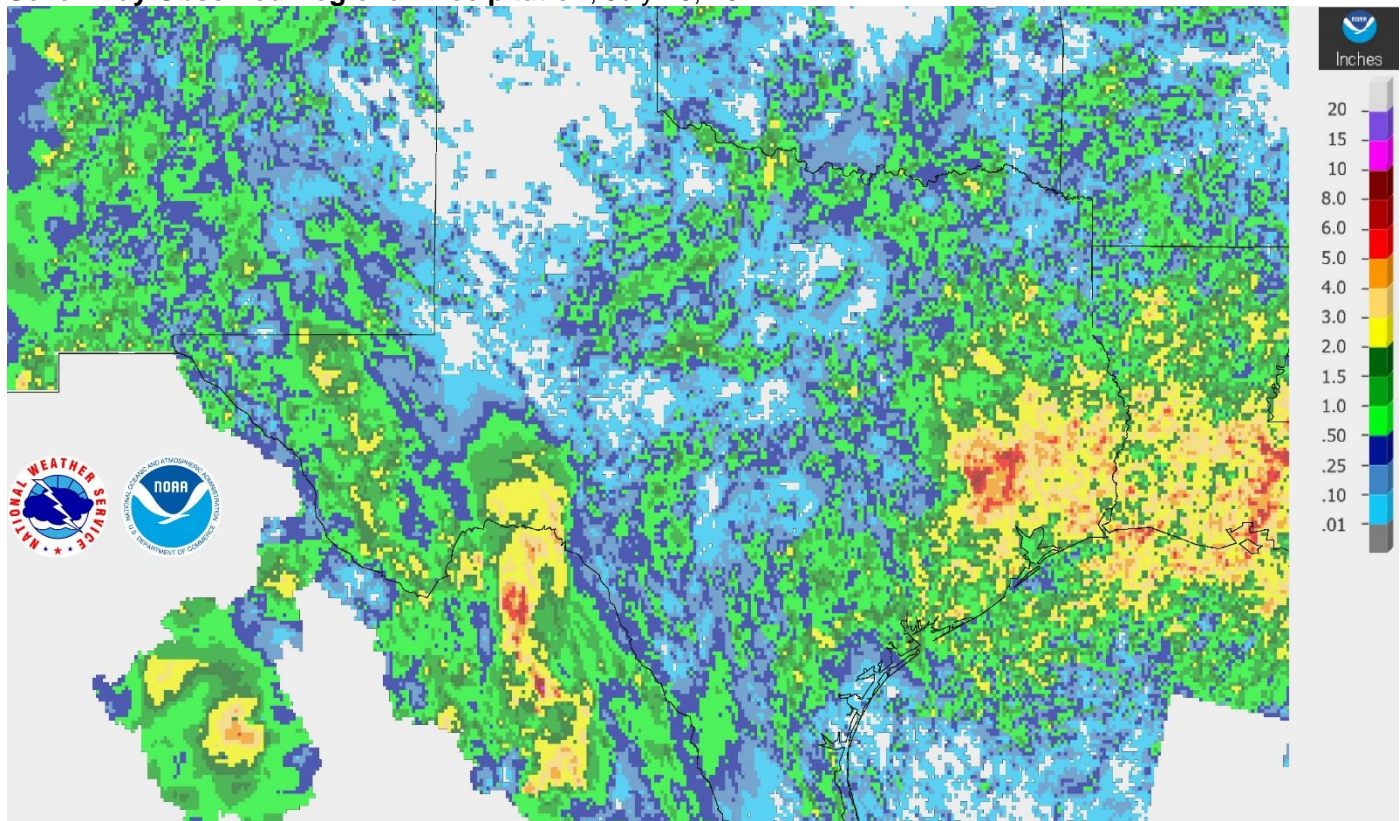
District	Topsoil Moisture Condition by District				Subsoil Moisture Condition by District				Days Suitable for Fieldwork
	Percentage of Acreage				Percentage of Acreage				
	Very Short	Short	Adequate	Surplus	Very Short	Short	Adequate	Surplus	
11	15	45	40	0	7	40	53	0	6.9
12	0	19	78	3	1	23	74	2	6.5
21	11	47	42	0	11	38	51	0	7.0
22	1	37	57	5	1	27	70	2	6.2
30	6	28	59	7	6	28	60	6	6.6
40	6	18	71	5	3	14	78	5	6.1
51	1	22	75	2	0	27	71	2	6.5
52	4	39	46	11	3	38	51	8	6.5
60	47	7	46	0	46	9	45	0	7.0
70	8	49	42	1	6	42	51	1	6.9
81	8	54	34	4	6	57	30	7	6.5
82	41	51	8	0	43	40	17	0	7.0
90	5	12	69	14	4	13	78	5	5.5
96	33	41	25	1	32	42	25	1	7.0
97	12	29	34	25	10	32	58	0	7.0
State	9	33	54	4	7	31	60	2	6.6

### Texas Agricultural Districts

- 11 Northern High Plains
- 12 Southern High Plains
- 21 Northern Low Plains
- 22 Southern Low Plains
- 30 Cross Timbers
- 40 Blacklands
- 51 North East
- 52 South East
- 60 Trans-Pecos
- 70 Edwards Plateau
- 81 South Central
- 82 Coaster Bend
- 90 Upper Coast
- 96 South
- 97 Lower Valley

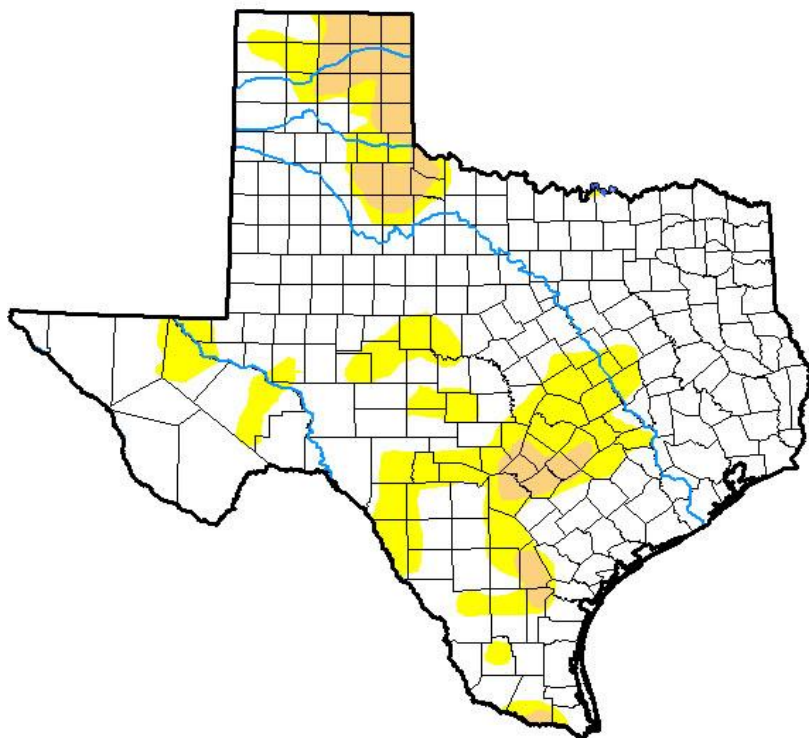


Seven Day Observed Regional Precipitation, July 16, 2017.



Source: National Weather Service, [www.nws.noaa.gov](http://www.nws.noaa.gov)

Drought Monitor, Valid July 11, 2017.



Drought Conditions (Percent Area)

	None	D0-D4	D1-D4	D2-D4	D3-D4	D4
<b>Current</b>	76.12	23.88	6.57	0.00	0.00	0.00
<b>Last Week</b> <i>07-04-2017</i>	73.51	26.49	6.01	0.92	0.00	0.00
<b>3 Months Ago</b> <i>04-11-2017</i>	84.74	15.26	1.71	0.01	0.00	0.00
<b>Start of Calendar Year</b> <i>01-03-2017</i>	81.50	18.50	6.29	1.97	0.04	0.00
<b>Start of Water Year</b> <i>09-27-2016</i>	94.83	5.17	0.62	0.00	0.00	0.00
<b>One Year Ago</b> <i>07-12-2016</i>	93.97	6.03	0.00	0.00	0.00	0.00

Intensity:

- D0 Abnormally Dry
- D1 Moderate Drought
- D2 Severe Drought
- D3 Extreme Drought
- D4 Exceptional Drought

*The Drought Monitor focuses on broad-scale conditions. Local conditions may vary. See accompanying text summary for forecast statements.*

Author:

David Simeral  
Western Regional Climate Center



Source: National Drought Mitigation Center, a partnership with USDA, U.S. Department of Commerce/NOAA, <http://droughtmonitor.unl.edu>