



# Texas Crop Progress and Condition

Southern Plains Regional Field Office  
Post Office Box 70 Austin, Texas 78767  
(800) 626-3142 · FAX (855) 270-2725 · www.nass.usda.gov/tx

**Issue: TX-CW2617**

**Weekly Summary for July 17-23**

**Released: July 24, 2017**

Three digit temperatures were once again recorded in many areas of the state. Rainfall in areas of the Trans-Pecos, the Edwards Plateau, the Upper Coast, East Texas, the Blacklands and the Cross Timbers ranged between 0.5 and 2.0 inches. The rest of the state had little to no precipitation during the week. There were 6.5 days suitable for fieldwork.

**Small Grains:** Land was being prepared in some areas of South Texas for winter wheat.

**Row Crops:** High winds carrying dirt and sand, along with multiple hail events have caused significant cotton crop losses in areas of the Southern High Plains and the Northern Low Plains. Cotton fleahoppers were becoming a concern for some producers in the Northern Low Plains. Sorghum harvest continued in the Blacklands, the Coastal Bend, the Upper Coast, and South East Texas, while nearing completion in southern areas of the state. Rain and high humidity delayed corn harvest in areas of the Blacklands as producers waited for grain to dry down.

**Fruit, Vegetable, and Specialty Crops:** Summer vegetable production was slowing in North East Texas. Watermelon and cantaloupe harvests were progressing in South Texas. Field preparations were underway for planting of fall vegetable crops in the Lower Valley. The pecan crop in the Cross Timbers had some nut drop due to heat.

**Livestock, Range and Pasture:** Livestock was in good to fair condition throughout the state. Range and pasture conditions remained fair to good across the state.

## Crop Progress

Stage	Percent of Acreage			
	Current Week	Previous Week	Previous Year	5 Year Average
<b>Corn</b>				
Silked	74	70	89	87
Dough	57	56	57	64
Dented	55	53	51	56
Mature	40	25	40	40
<b>Cotton</b>				
Squaring	70	65	80	80
Setting Bolls	26	20	33	29
Bolls Opening	8	4	6	7
<b>Peanuts</b>				
Pegging	40	35	55	60
<b>Rice</b>				
Headed	89	81	90	79
Harvested	1	(NA)	5	1
<b>Sorghum</b>				
Headed	79	74	79	80
Coloring	58	57	57	64
Mature	49	46	49	53
Harvested	38	32	29	32
<b>Soybeans</b>				
Blooming	70	65	67	71
Setting Pods	40	20	37	38

(NA) Not available.

### Crop Condition

Crop	Percent of Acreage					Index <sup>1</sup>	
	Excellent	Good	Fair	Poor	Very Poor	2017	2016
Corn	20	54	24	2	0	86	76
Cotton	8	37	40	11	4	69	68
Peanuts	0	55	45	0	0	76	75
Rice	18	34	47	1	0	79	76
Sorghum	8	55	35	2	0	80	77
Soybeans	14	45	28	13	0	76	75
Oats	7	40	34	15	4	68	63
Range and Pasture	6	35	41	14	4	--	--

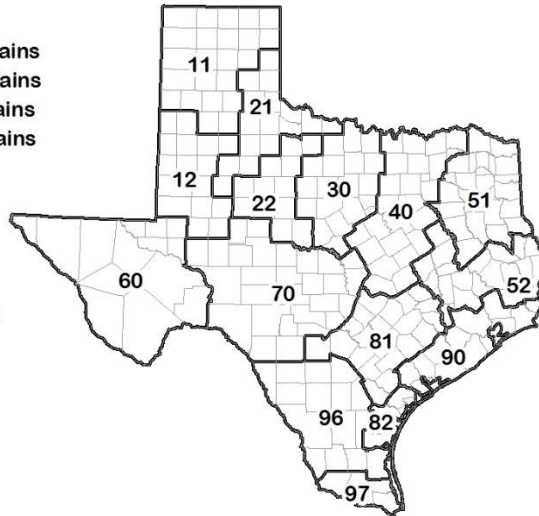
<sup>1</sup> The formula for the condition index is  $I = (5V + 25P + 60F + 90G + 110E)/100$  where I = crop condition index and V, P, F, G, E = percentage of crop rated very poor, poor, fair, good, excellent.

### Soil Moisture and Days Suitable by District

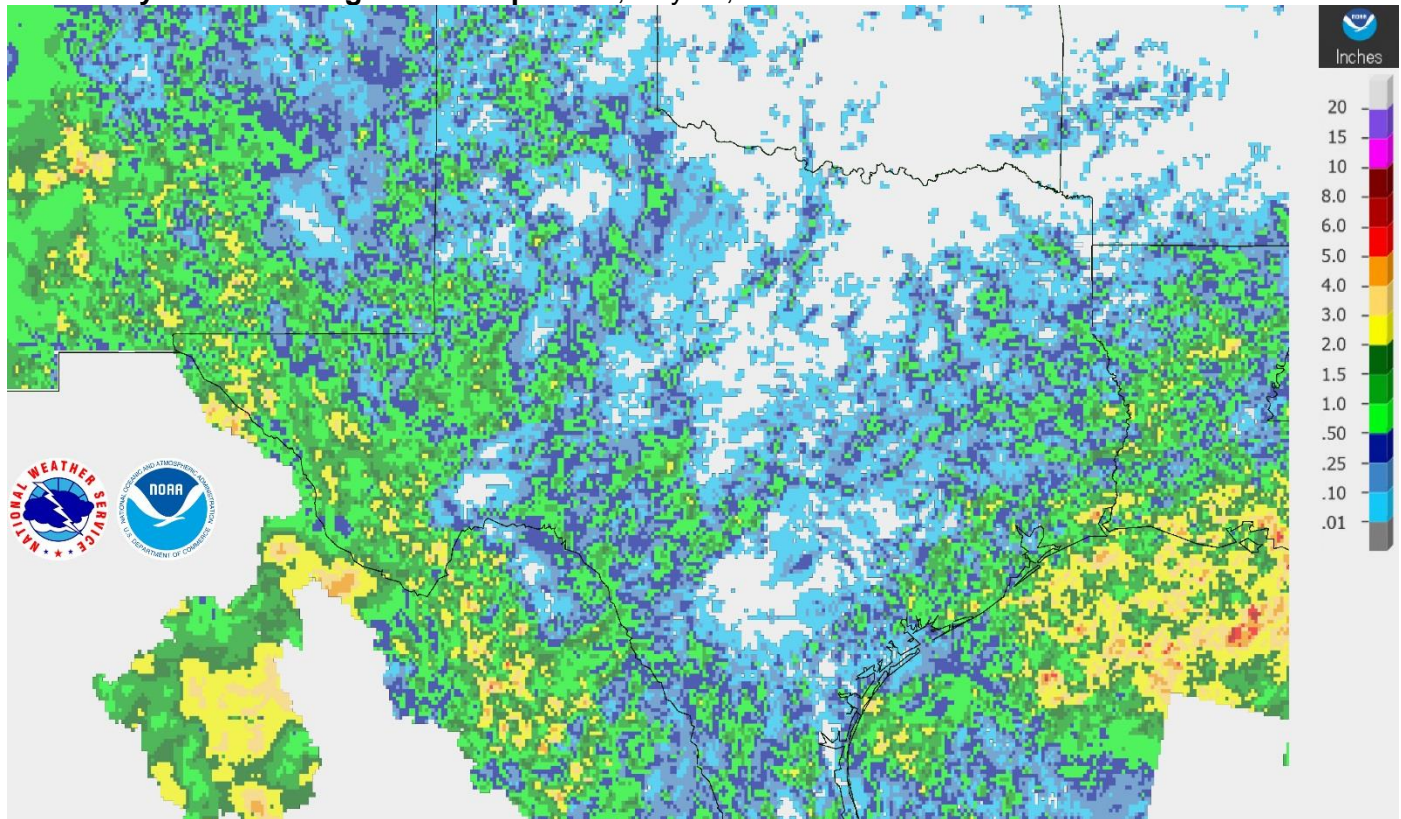
District	Topsoil Moisture Condition by District				Subsoil Moisture Condition by District				Days Suitable for Fieldwork
	Percentage of Acreage				Percentage of Acreage				
	Very Short	Short	Adequate	Surplus	Very Short	Short	Adequate	Surplus	
11	13	49	38	0	11	43	46	0	6.6
12	6	30	61	3	6	45	48	1	6.2
21	15	44	41	0	14	42	44	0	6.8
22	2	72	24	2	1	43	54	2	6.6
30	7	42	49	2	7	33	51	9	6.5
40	4	35	55	6	4	26	65	5	6.5
51	4	29	60	7	0	36	56	8	6.6
52	16	44	39	1	12	49	38	1	6.9
60	36	25	23	16	46	34	20	0	6.4
70	13	58	29	0	12	48	40	0	6.8
81	18	68	14	0	16	70	14	0	6.5
82	68	21	11	0	47	40	13	0	7.0
90	4	15	76	5	4	14	77	5	5.5
96	44	28	27	1	47	28	25	0	6.4
97	63	31	6	0	75	25	0	0	7.0
State	14	41	43	2	13	39	46	2	6.5

### Texas Agricultural Districts

- 11 Northern High Plains
- 12 Southern High Plains
- 21 Northern Low Plains
- 22 Southern Low Plains
- 30 Cross Timbers
- 40 Blacklands
- 51 North East
- 52 South East
- 60 Trans-Pecos
- 70 Edwards Plateau
- 81 South Central
- 82 Coaster Bend
- 90 Upper Coast
- 96 South
- 97 Lower Valley

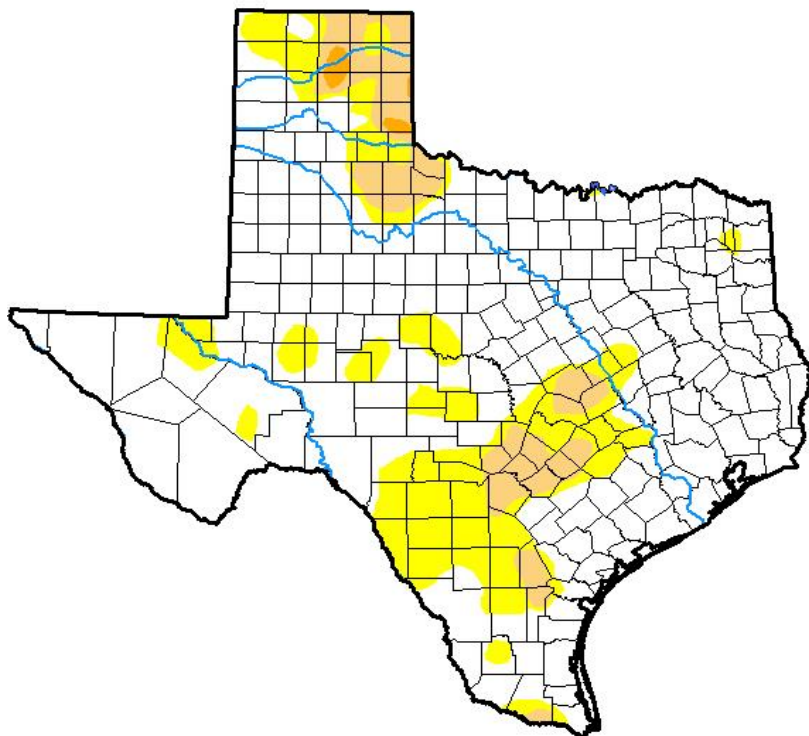


Seven Day Observed Regional Precipitation, July 23, 2017.



Source: National Weather Service, [www.nws.noaa.gov](http://www.nws.noaa.gov)

Drought Monitor, Valid July 18, 2017.



Drought Conditions (Percent Area)

	None	D0-D4	D1-D4	D2-D4	D3-D4	D4
<b>Current</b>	74.42	25.58	7.85	0.46	0.00	0.00
<b>Last Week</b> <i>07-11-2017</i>	76.12	23.88	6.57	0.00	0.00	0.00
<b>3 Months Ago</b> <i>04-18-2017</i>	90.30	9.70	1.54	0.00	0.00	0.00
<b>Start of Calendar Year</b> <i>01-03-2017</i>	81.50	18.50	6.29	1.97	0.04	0.00
<b>Start of Water Year</b> <i>09-27-2016</i>	94.83	5.17	0.62	0.00	0.00	0.00
<b>One Year Ago</b> <i>07-19-2016</i>	86.88	13.12	1.66	0.00	0.00	0.00

Intensity:

- D0 Abnormally Dry
- D1 Moderate Drought
- D2 Severe Drought
- D3 Extreme Drought
- D4 Exceptional Drought

The Drought Monitor focuses on broad-scale conditions. Local conditions may vary. See accompanying text summary for forecast statements.

Author:

Richard Heim  
NCEI/NOAA



Source: National Drought Mitigation Center, a partnership with USDA, U.S. Department of Commerce/NOAA, <http://droughtmonitor.unl.edu>