



Texas Crop Progress and Condition

Southern Plains Regional Field Office
Post Office Box 70 Austin, Texas 78767
(800) 626-3142 · FAX (855) 270-2725 · www.nass.usda.gov/tx

Issue: TX-CW2917

Weekly Summary for August 7-August 13

Released: August 14, 2017

The Northern High Plains, the Blacklands, East Texas and the Upper Coast received between 3.0 and 6.0 inches of rain. Isolated areas in the Blacklands received upwards 10 inches of precipitation. Delayed harvest and cooler temperatures were experienced in those areas receiving precipitation, while areas of South Texas remained hot and dry. There were 5.3 days suitable for fieldwork.

Small Grain: Field preparations continued for the 2017 wheat and oats crops.

Row Crops: Aphid numbers in the Southern High Plains were elevated in areas that were previously treated for cotton fleahoppers. There were signs of cotton root rot in some areas of the Blacklands. Cotton harvest continued in the Upper Coast, the Coastal Bend, South Texas and the Lower Valley. Producers were making preparations in anticipation of corn harvest in the Northern High Plains.

Fruit, Vegetable, and Specialty Crops: Vegetable harvest slowed down in North East Texas. Some areas of South East Texas reported fungus problems in fruit trees. Pecan trees in the Southern High Plains were shedding and operators were applying pesticides to control weevils.

Livestock, Range and Pasture: Cattle conditions in areas of South Texas have declined. Producers continued providing supplemental feed for livestock. Range and pasture condition varied across the state. Some areas benefited greatly from the recent rains and increase in moisture. However, pastures in South Texas and areas of the Trans-Pecos were still dry and continued to decline in forage quality. Hogs continued to be a problem for corn growers in North East Texas.

Crop Condition

Crop	Percent of Acreage					Index ¹	
	Excellent	Good	Fair	Poor	Very Poor	2017	2016
Corn	17	63	18	2	0	87	73
Cotton	16	35	32	4	13	70	63
Peanuts	1	74	25	0	0	83	75
Rice	15	53	31	1	0	83	80
Sorghum	16	62	18	3	1	85	75
Soybeans	17	45	23	15	0	77	72
Range and Pasture	9	36	37	14	4	--	--

¹ The formula for the condition index is $I = (5V + 25P + 60F + 90G + 110E)/100$ where I = crop condition index and V, P, F, G, E = percentage of crop rated very poor, poor, fair, good, excellent.

Crop Progress

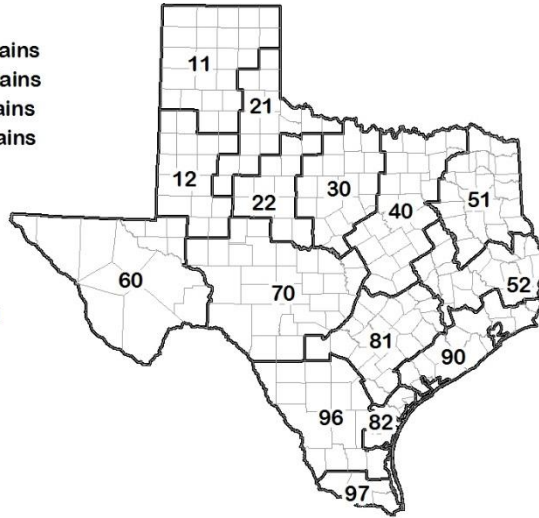
Stage	Percent of Acreage			
	Current Week	Previous Week	Previous Year	5 Year Average
Corn				
Dough	71	65	90	85
Dented	62	58	60	64
Mature	58	51	51	55
Harvested	42	31	37	37
Cotton				
Squaring	97	90	99	98
Setting Bolls	75	45	84	77
Bolls Opening	13	12	15	13
Harvested	3	1	3	2
Peanuts				
Pegging	80	64	92	93
Rice				
Harvested	52	38	64	34
Sorghum				
Headed	89	85	85	86
Coloring	68	61	73	75
Mature	58	54	56	66
Harvested	51	49	45	48
Soybeans				
Blooming	93	89	95	89
Setting Pods	86	77	72	72
Dropping Leaves	25	15	30	17
Sunflowers				
Harvested	30	20	14	17

Soil Moisture and Days Suitable by District

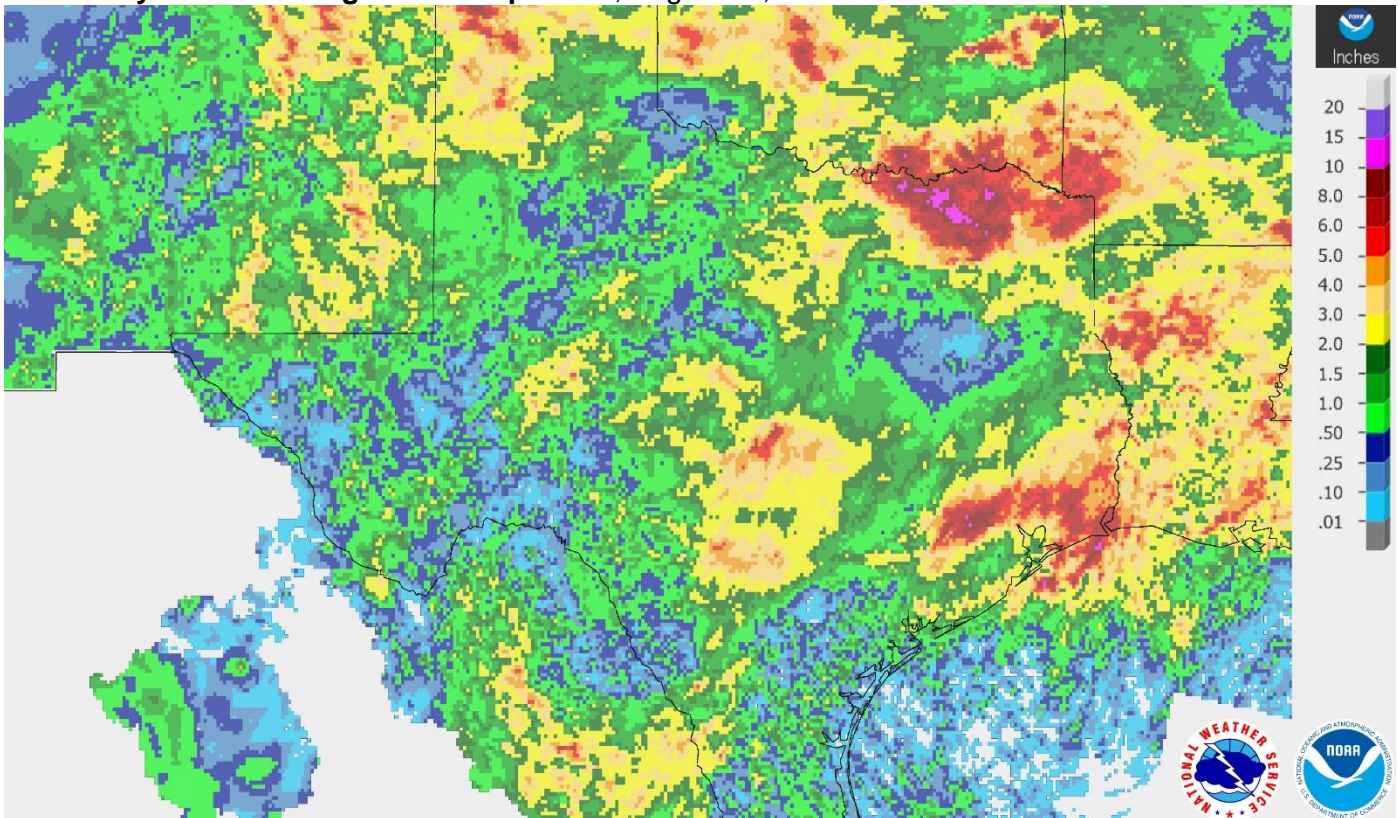
District	Topsoil Moisture Condition by District				Subsoil Moisture Condition by District				Days Suitable for Fieldwork
	Percentage of Acreage				Percentage of Acreage				
	Very Short	Short	Adequate	Surplus	Very Short	Short	Adequate	Surplus	
11	1	11	59	29	3	14	81	2	3.9
12	0	16	46	38	4	14	52	30	5.0
21	11	36	51	2	13	38	49	0	6.7
22	0	43	50	7	0	43	56	1	6.0
30	7	24	63	6	6	24	66	4	6.2
40	0	28	55	17	1	18	74	7	5.3
51	1	19	64	16	1	29	64	6	5.5
52	7	38	42	13	6	41	44	9	6.1
60	0	2	98	0	0	2	98	0	6.6
70	14	47	26	13	20	46	34	0	6.1
81	11	54	35	0	18	58	24	0	6.2
82	0	100	0	0	90	10	0	0	7.0
90	4	18	58	20	4	13	64	19	4.1
96	27	23	50	0	27	44	29	0	6.4
97	62	36	2	0	88	12	0	0	7.0
State	6	27	49	18	11	24	57	8	5.3

Texas Agricultural Districts

- 11 Northern High Plains
- 12 Southern High Plains
- 21 Northern Low Plains
- 22 Southern Low Plains
- 30 Cross Timbers
- 40 Blacklands
- 51 North East
- 52 South East
- 60 Trans-Pecos
- 70 Edwards Plateau
- 81 South Central
- 82 Coaster Bend
- 90 Upper Coast
- 96 South
- 97 Lower Valley

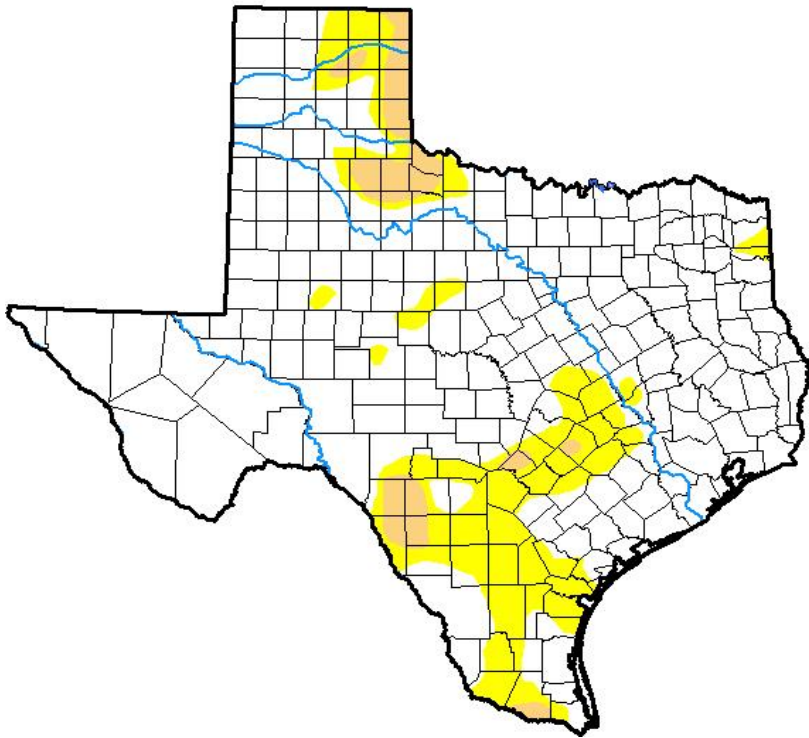


Seven Day Observed Regional Precipitation, August 13, 2017.



Source: National Weather Service, www.nws.noaa.gov

Drought Monitor, Valid August 8, 2017.



Drought Conditions (Percent Area)

	None	D0-D4	D1-D4	D2-D4	D3-D4	D4
Current	79.97	20.03	4.29	0.00	0.00	0.00
Last Week <i>08-01-2017</i>	73.48	26.52	9.90	0.73	0.00	0.00
3 Months Ago <i>05-09-2017</i>	78.86	21.14	2.33	0.00	0.00	0.00
Start of Calendar Year <i>01-03-2017</i>	81.50	18.50	6.29	1.97	0.04	0.00
Start of Water Year <i>09-27-2016</i>	94.83	5.17	0.62	0.00	0.00	0.00
One Year Ago <i>08-09-2016</i>	55.83	44.17	10.16	0.93	0.00	0.00

Intensity:

- D0 Abnormally Dry
- D1 Moderate Drought
- D2 Severe Drought
- D3 Extreme Drought
- D4 Exceptional Drought

The Drought Monitor focuses on broad-scale conditions. Local conditions may vary. See accompanying text summary for forecast statements.

Author:

Deborah Bathke
National Drought Mitigation Center



Source: National Drought Mitigation Center, a partnership with USDA, U.S. Department of Commerce/NOAA, <http://droughtmonitor.unl.edu>