



Texas Crop Progress and Condition

Southern Plains Regional Field Office
Post Office Box 70 Austin, Texas 78767
(800) 626-3142 · FAX (855) 270-2725 · www.nass.usda.gov/tx

Issue: TX-CW3017

Weekly Summary for August 14 - August 20

Released: August 21, 2017

Weather was mostly hot and dry in South Central Texas, the Coastal Bend, South Texas and the Lower Valley. The rest of the state experienced cooler temperatures and between 0.2 to 2.0 inches of rain. There were 5.5 days suitable for fieldwork.

Small Grain: Field preparations continued for the 2017 wheat and oats crops. Some farmers in the Northern Low Plains had begun seeding winter wheat.

Row Crops: Hail damaged some cotton fields in the Northern High Plains. Cotton rust was spotted in areas of the Trans-Pecos. Cotton harvest continued in the Upper Coast, the Coastal Bend, South Texas and the Lower Valley, while warmer temperatures and dry weather were needed in some areas of the High and Low Plains. High humidity prevented farmers from harvesting corn in areas of the Northern Low Plains and the Southern High Plains. Rain in areas of the Northern High Plains helped with control of sugarcane aphid populations in sorghum.

Fruit, Vegetable, and Specialty Crops: Pecans were progressing well in the Cross Timbers but areas of the Trans-Pecos and South Texas were in need of rain.

Livestock, Range and Pasture: Producers continued providing supplemental feed for livestock in South Texas and the Lower Valley. Lambs were being weaned in areas of the Edwards Plateau. Range and pasture benefited greatly from the previous week showers in the northern areas of the state. However, pastures in South Central Texas, the Coastal Bend, the Upper Coast, South Texas and the Lower Valley were browning due to the hot, dry weather.

Crop Progress

Stage	Percent of Acreage			
	Current Week	Previous Week	Previous Year	5 Year Average
Corn				
Dough	92	71	95	88
Dented	77	62	69	69
Mature	60	58	56	59
Harvested	51	42	46	46
Cotton				
Setting Bolls	86	75	91	84
Bolls Opening	14	13	17	16
Harvested	9	3	4	4
Peanuts				
Pegging	92	80	96	98
Rice				
Harvested	70	52	70	52
Sorghum				
Headed	91	89	88	88
Coloring	79	68	76	77
Mature	69	58	66	69
Harvested	56	51	46	52
Soybeans				
Blooming	95	93	100	90
Setting Pods	89	86	79	78
Dropping Leaves	40	25	38	31
Sunflowers				
Harvested	33	30	19	23

Crop Condition

Crop	Percent of Acreage					Index ¹	
	Excellent	Good	Fair	Poor	Very Poor	2017	2016
Corn	22	57	18	3	0	87	74
Cotton	12	43	30	7	8	72	65
Peanuts	1	74	25	0	0	83	77
Rice	22	44	33	1	0	84	80
Sorghum	16	62	18	3	1	85	77
Soybeans	18	44	33	5	0	80	72
Range and Pasture	10	31	39	15	5	--	--

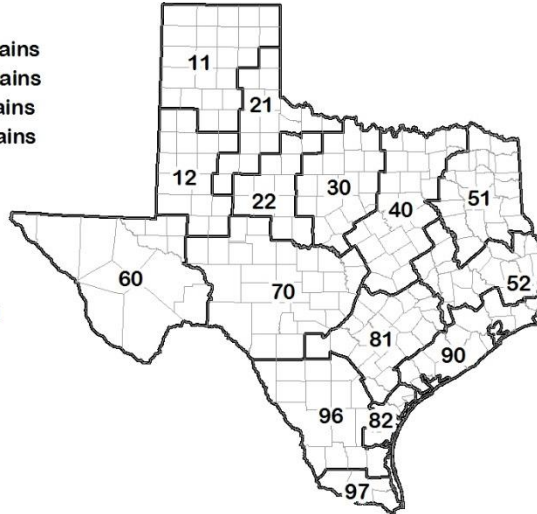
¹ The formula for the condition index is $I = (5V + 25P + 60F + 90G + 110E)/100$ where I = crop condition index and V, P, F, G, E = percentage of crop rated very poor, poor, fair, good, excellent.

Soil Moisture and Days Suitable by District

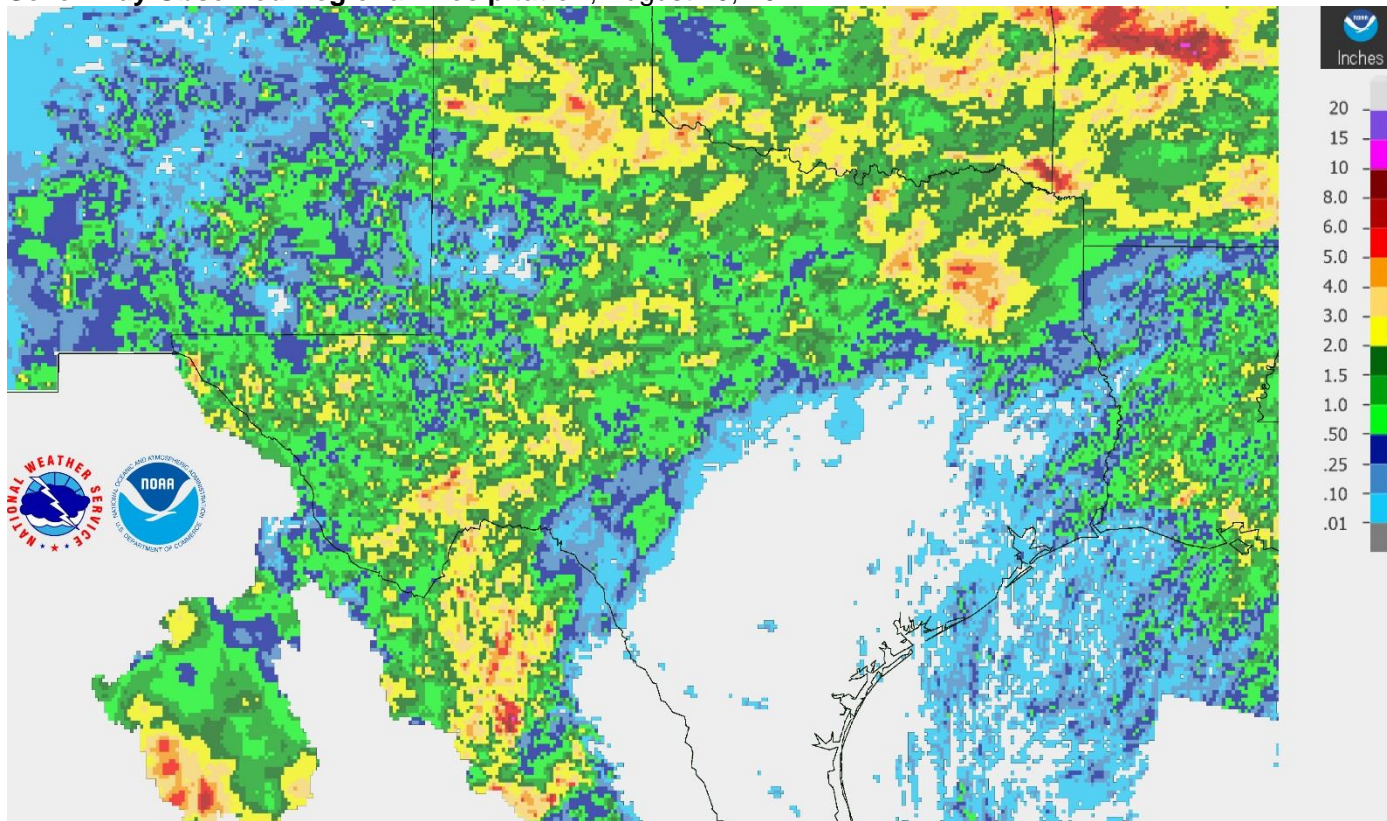
District	Topsoil Moisture Condition by District				Subsoil Moisture Condition by District				Days Suitable for Fieldwork
	Percentage of Acreage				Percentage of Acreage				
	Very Short	Short	Adequate	Surplus	Very Short	Short	Adequate	Surplus	
11	0	8	75	17	5	14	80	1	3.7
12	0	13	42	45	1	24	42	33	6.0
21	3	26	63	8	9	22	63	6	4.6
22	5	29	64	2	5	37	56	2	5.6
30	10	34	43	13	9	41	44	6	5.8
40	9	29	46	16	6	22	57	15	5.0
51	0	16	68	16	0	26	67	7	5.7
52	38	28	31	3	29	36	32	3	6.9
60	23	13	64	0	23	14	63	0	5.8
70	9	42	49	0	10	40	50	0	6.4
81	17	60	23	0	20	64	16	0	6.8
82	31	64	5	0	36	56	8	0	7.0
90	4	25	61	10	4	18	68	10	6.6
96	36	21	43	0	38	41	21	0	7.0
97	73	23	4	0	71	29	0	0	7.0
State	9	24	51	16	10	28	53	9	5.5

Texas Agricultural Districts

- 11 Northern High Plains
- 12 Southern High Plains
- 21 Northern Low Plains
- 22 Southern Low Plains
- 30 Cross Timbers
- 40 Blacklands
- 51 North East
- 52 South East
- 60 Trans-Pecos
- 70 Edwards Plateau
- 81 South Central
- 82 Coaster Bend
- 90 Upper Coast
- 96 South
- 97 Lower Valley

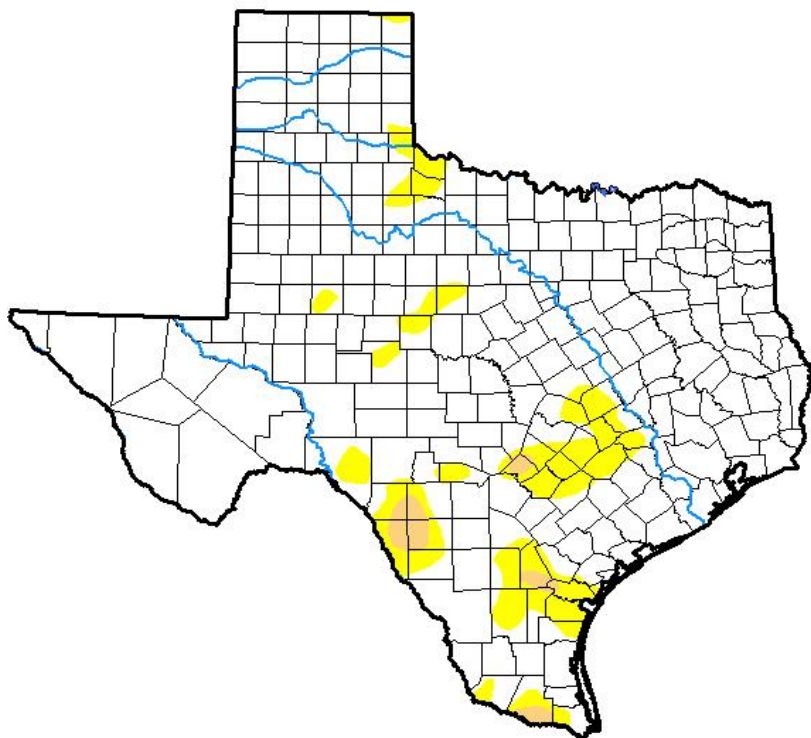


Seven Day Observed Regional Precipitation, August 20, 2017.



Source: National Weather Service, www.nws.noaa.gov

Drought Monitor, Valid August 15, 2017.



Drought Conditions (Percent Area)

	None	D0-D4	D1-D4	D2-D4	D3-D4	D4
Current	89.71	10.29	1.23	0.00	0.00	0.00
Last Week <i>08-08-2017</i>	79.97	20.03	4.29	0.00	0.00	0.00
3 Months Ago <i>05-16-2017</i>	65.58	34.42	6.15	1.20	0.00	0.00
Start of Calendar Year <i>01-03-2017</i>	81.50	18.50	6.29	1.97	0.04	0.00
Start of Water Year <i>09-27-2016</i>	94.83	5.17	0.62	0.00	0.00	0.00
One Year Ago <i>08-16-2016</i>	71.24	28.76	5.31	0.63	0.00	0.00

Intensity:

- D0 Abnormally Dry
- D1 Moderate Drought
- D2 Severe Drought
- D3 Extreme Drought
- D4 Exceptional Drought

The Drought Monitor focuses on broad-scale conditions. Local conditions may vary. See accompanying text summary for forecast statements.

Author:

Jessica Blunden
NCEI/NOAA



Source: National Drought Mitigation Center, a partnership with USDA, U.S. Department of Commerce/NOAA, <http://droughtmonitor.unl.edu>

Texas Crop Progress and Condition (21 August 2017)

USDA, National Agricultural Statistics Service, Southern Plains Regional Field Office