



Texas Crop Progress and Condition

Southern Plains Regional Field Office
Post Office Box 70 Austin, Texas 78767
(800) 626-3142 · FAX (855) 270-2725 · www.nass.usda.gov/tx

Issue: TX-CW3317

Weekly Summary for September 4 - 10

Released: September 11, 2017

Last week was relatively dry for most of Texas. The only areas with measurable rainfall were East Texas, South Texas, and the Lower Valley. These districts received between 0.2 to 1.5 inches of rain, with isolated areas receiving upwards 4.0 inches. There were 6.5 days suitable for fieldwork.

Small Grain: Winter Wheat seedings started in the Plains and the Edwards Plateau. Oat seedings continued in South Texas and the Blacklands.

Row Crops: Cotton development in the Northern High Plains made favorable progress thanks to the warm weather and setting bolls neared completion. Cotton harvest continued in South Texas and the Lower Valley. Corn and soybean harvest continued in the Blacklands and North East Texas. Some producers reported sorghum fields in the Southern High Plains being infested with sugarcane aphids.

Fruit, Vegetable, and Specialty Crops: Planting of fall season vegetable crops continued in the Lower Valley. An early variety of pecans called Pawnee, was opening up in the Tans-Pecos and harvest should start in the next few weeks.

Livestock, Range and Pasture: Producers in the Coastal Bend and the Upper Coast suffered livestock losses during the passing of Hurricane Harvey two weeks ago. Livestock in the rest of the state remained in mostly good condition. Pasture and range condition were rated good to fair statewide.

Crop Progress

Stage	Percent of Acreage			
	Current Week	Previous Week	Previous Year	5 Year Average
Corn				
Dented	88	87	83	86
Mature	67	66	67	69
Harvested	60	57	58	58
Cotton				
Bolls Opening	26	21	29	32
Harvested	16	15	8	9
Rice				
Harvested	91	90	95	90
Sorghum				
Coloring	83	82	81	83
Mature	73	72	77	76
Harvested	62	61	58	62
Soybeans				
Dropping Leaves	62	50	62	62
Harvested	40	30	42	39
Sunflowers				
Harvested	46	44	34	41
Winter Wheat				
Planted	6	(NA)	5	5

(NA) Not available.

Crop Condition

Crop	Percent of Acreage					Index ¹	
	Excellent	Good	Fair	Poor	Very Poor	2017	2016
Corn	22	57	18	3	0	87	74
Cotton	16	39	30	8	7	73	65
Peanuts	9	61	26	4	0	81	78
Rice	22	44	33	1	0	84	80
Sorghum	16	62	18	3	1	85	76
Soybeans	28	46	20	2	4	85	72
Range and Pasture	15	36	33	12	4	--	--

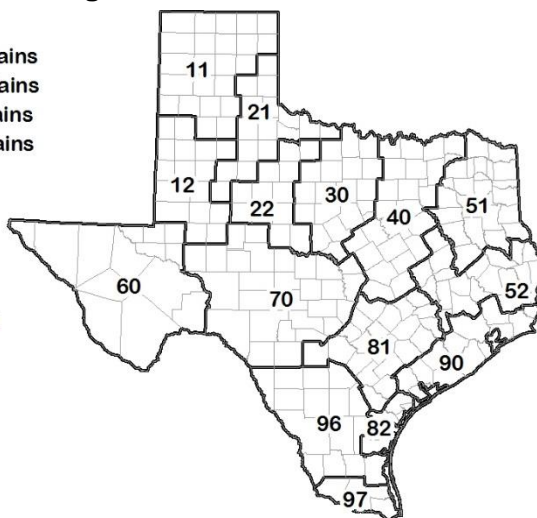
¹ The formula for the condition index is $I = (5V + 25P + 60F + 90G + 110E)/100$ where I = crop condition index and V, P, F, G, E = percentage of crop rated very poor, poor, fair, good, excellent.

Soil Moisture and Days Suitable by District

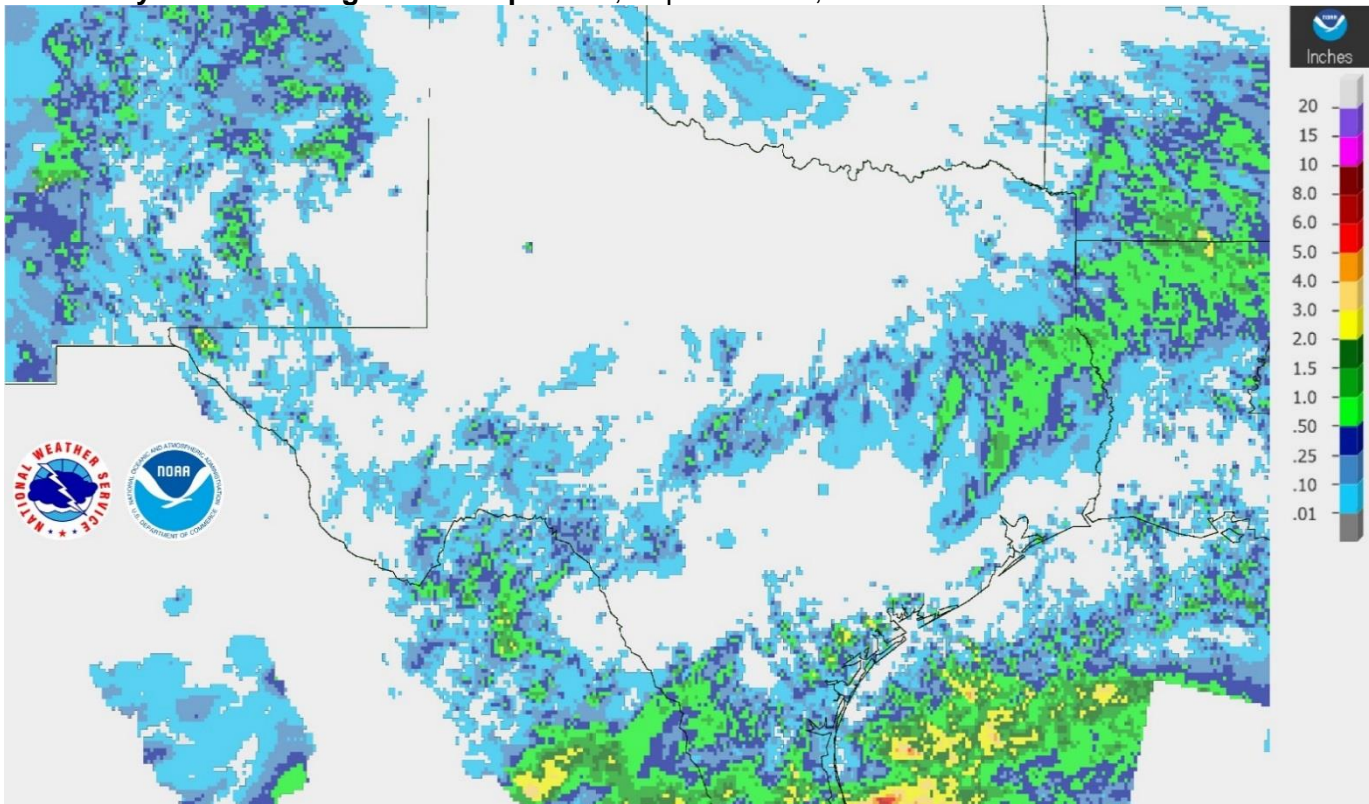
District	Topsoil Moisture Condition by District				Subsoil Moisture Condition by District				Days Suitable for Fieldwork
	Percentage of Acreage				Percentage of Acreage				
	Very Short	Short	Adequate	Surplus	Very Short	Short	Adequate	Surplus	
11	0	28	72	0	0	14	86	0	6.9
12	2	49	36	13	2	47	38	13	7.0
21	10	31	58	1	7	28	65	0	7.0
22	5	58	35	2	3	56	41	0	6.4
30	15	37	42	6	11	40	46	3	6.3
40	12	53	32	3	5	42	50	3	6.8
51	3	25	55	17	4	25	62	9	6.6
52	0	8	62	30	0	6	66	28	5.4
60	33	16	51	0	29	19	51	1	6.8
70	9	46	42	3	11	44	42	3	6.7
81	1	20	71	8	0	24	67	9	6.9
82	0	34	61	5	41	27	27	5	4.7
90	2	2	41	55	2	2	40	56	3.4
96	34	42	24	0	34	41	25	0	7.0
97	63	36	1	0	62	38	0	0	7.0
State	8	36	48	8	8	32	52	8	6.5

Texas Agricultural Districts

- 11 Northern High Plains
- 12 Southern High Plains
- 21 Northern Low Plains
- 22 Southern Low Plains
- 30 Cross Timbers
- 40 Blacklands
- 51 North East
- 52 South East
- 60 Trans-Pecos
- 70 Edwards Plateau
- 81 South Central
- 82 Coaster Bend
- 90 Upper Coast
- 96 South
- 97 Lower Valley

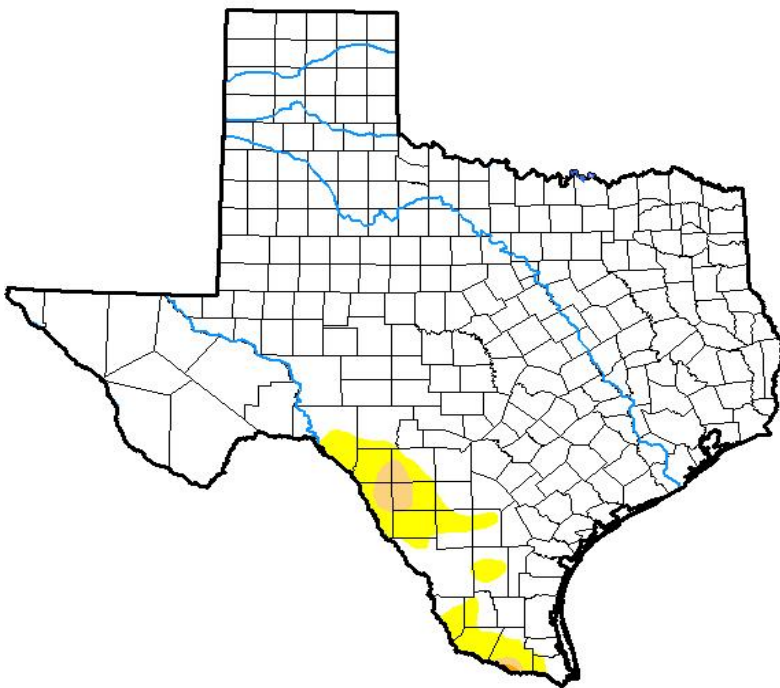


Seven Day Observed Regional Precipitation, September 10, 2017.



Source: National Weather Service, www.nws.noaa.gov

Drought Monitor, Valid September 5, 2017.



Drought Conditions (Percent Area)

	None	D0-D4	D1-D4	D2-D4	D3-D4	D4
Current	94.84	5.16	0.79	0.04	0.00	0.00
Last Week <i>08-29-2017</i>	96.14	3.86	0.87	0.00	0.00	0.00
3 Months Ago <i>06-06-2017</i>	83.43	16.57	1.16	0.00	0.00	0.00
Start of Calendar Year <i>01-03-2017</i>	81.50	18.50	6.29	1.97	0.04	0.00
Start of Water Year <i>09-27-2016</i>	94.83	5.17	0.62	0.00	0.00	0.00
One Year Ago <i>09-06-2016</i>	92.46	7.54	0.57	0.00	0.00	0.00

Intensity:

- D0 Abnormally Dry
- D1 Moderate Drought
- D2 Severe Drought
- D3 Extreme Drought
- D4 Exceptional Drought

The Drought Monitor focuses on broad-scale conditions. Local conditions may vary. See accompanying text summary for forecast statements.

Author:

Deborah Bathke
National Drought Mitigation Center



Source: National Drought Mitigation Center, a partnership with USDA, U.S. Department of Commerce/NOAA, <http://droughtmonitor.unl.edu>