



# Texas Crop Progress and Condition

Southern Plains Regional Field Office

Post Office Box 70 Austin, Texas 78767

(800) 626-3142 · FAX (855) 270-2725 · www.nass.usda.gov/tx

Issue: TX-CW3417

Weekly Summary for September 11 - 17

Released: September 18, 2017

Weather was mostly dry and hot across the state. Areas in the Trans-Pecos, the High Plains and the Northern Low Plains received between 0.2 and 1.0 inches of precipitation with isolated areas receiving upwards of 1.5 inches of rain. There were 6.7 days suitable for fieldwork.

**Small Grain:** Winter Wheat seeding continued in the Plains. Wheat producers in some areas of the Southern Plains, the Cross Timbers, the Blacklands and the Trans-Pecos were waiting for higher soil moisture to start seeding the fields. Oats and wheat seeding continued in South Texas.

**Row Crops:** Cotton bolls were opening in the Plains and the Trans-Pecos while harvest continued in the Blacklands, South East Texas and South Texas. Corn harvest continued in the Northern Plains and the Cross Timbers. Sugarcane aphid infestations got heavier late in the season in the Southern High Plains.

**Fruit, Vegetable, and Specialty Crops:** Producers were planting spinach and onions in South Texas. Pecans continued making favorable progress for harvest.

**Livestock, Range and Pasture:** Producers were giving supplemental feed to livestock in the Cross Timbers, South Texas and the Lower Valley. Cattle and livestock condition remained good to fair across the state. Pastures were showing signs of drought stress in many areas of the state. Overall, pasture and range condition remained good to fair statewide.

## Crop Progress

Stage	Percent of Acreage			
	Current Week	Previous Week	Previous Year	5 Year Average
<b>Corn</b>				
Dented	92	88	92	92
Mature	74	67	74	77
Harvested	67	60	62	62
<b>Cotton</b>				
Bolls Opening	31	26	31	40
Harvested	18	16	9	11
<b>Peanuts</b>				
Harvested	3	(NA)	1	3
<b>Rice</b>				
Harvested	96	91	99	96
<b>Sorghum</b>				
Coloring	89	83	82	86
Mature	74	73	78	77
Harvested	70	62	61	64
<b>Soybeans</b>				
Dropping Leaves	70	62	70	69
Harvested	47	40	45	46
<b>Sunflowers</b>				
Harvested	47	46	39	46
<b>Winter Wheat</b>				
Planted	14	6	13	14

(NA) Not available.

### Crop Condition

Crop	Percent of Acreage					Index <sup>1</sup>	
	Excellent	Good	Fair	Poor	Very Poor	2017	2016
Corn	22	57	18	3	0	87	74
Cotton	17	41	28	6	8	74	66
Peanuts	15	51	28	6	0	81	78
Rice	22	44	33	1	0	84	(NA)
Sorghum	16	62	18	3	1	85	76
Soybeans	22	49	19	6	4	81	71
Range and Pasture	11	38	32	15	4	---	---

(NA) Not available.

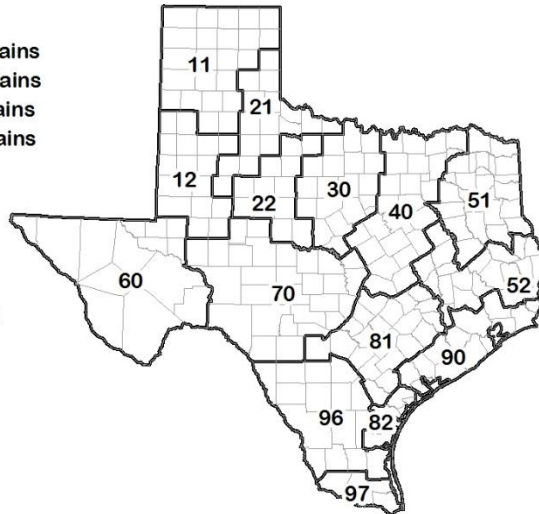
<sup>1</sup> The formula for the condition index is  $I = (5V + 25P + 60F + 90G + 110E)/100$  where I = crop condition index and V, P, F, G, E = percentage of crop rated very poor, poor, fair, good, excellent.

### Soil Moisture and Days Suitable by District

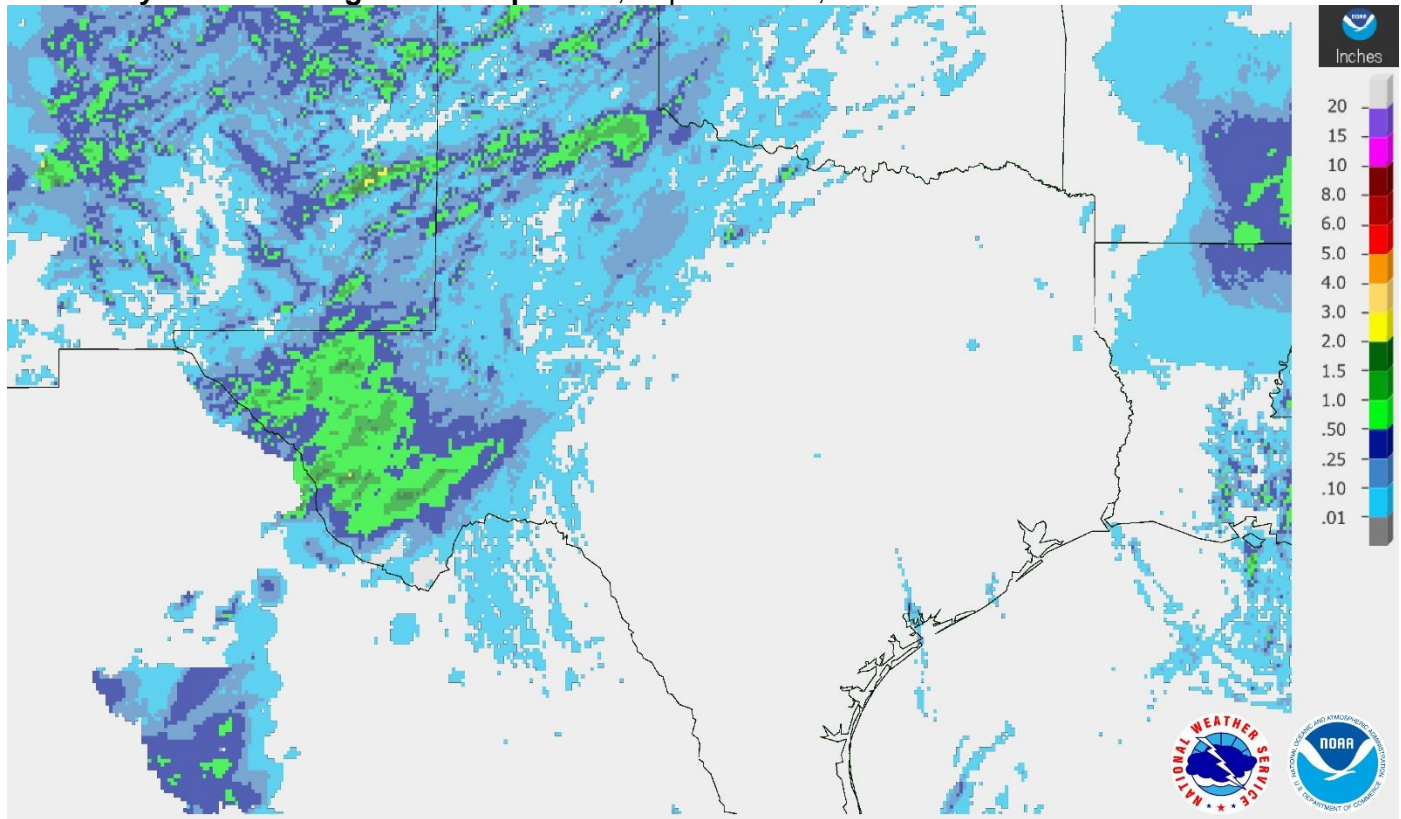
District	Topsoil Moisture Condition by District				Subsoil Moisture Condition by District				Days Suitable for Fieldwork
	Percentage of Acreage				Percentage of Acreage				
	Very Short	Short	Adequate	Surplus	Very Short	Short	Adequate	Surplus	
11	0	46	54	0	2	11	87	0	6.5
12	5	63	18	14	1	61	24	14	6.7
21	23	36	41	0	13	35	52	0	6.8
22	12	60	28	0	3	68	29	0	6.6
30	13	42	43	2	12	37	49	2	6.3
40	22	42	35	1	10	42	46	2	7.0
51	7	32	52	9	8	33	55	4	6.9
52	1	18	65	16	0	16	72	12	6.8
60	33	17	50	0	33	16	49	2	6.8
70	15	61	23	1	14	57	28	1	6.7
81	14	16	61	9	6	28	59	7	6.8
82	30	70	0	0	70	30	0	0	7.0
90	3	11	44	42	0	8	34	58	5.4
96	35	42	23	0	35	41	24	0	7.0
97	62	36	2	0	62	38	0	0	7.0
State	13	44	37	6	10	36	47	7	6.7

### Texas Agricultural Districts

- 11 Northern High Plains
- 12 Southern High Plains
- 21 Northern Low Plains
- 22 Southern Low Plains
- 30 Cross Timbers
- 40 Blacklands
- 51 North East
- 52 South East
- 60 Trans-Pecos
- 70 Edwards Plateau
- 81 South Central
- 82 Coaster Bend
- 90 Upper Coast
- 96 South
- 97 Lower Valley

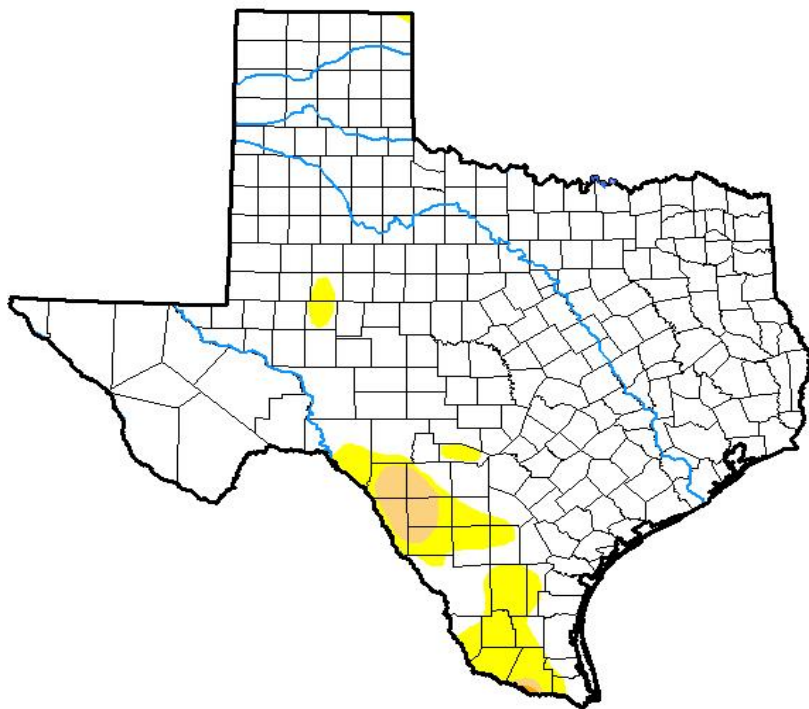


Seven Day Observed Regional Precipitation, September 17, 2017.



Source: National Weather Service, [www.nws.noaa.gov](http://www.nws.noaa.gov)

Drought Monitor, Valid September 12, 2017.



Drought Conditions (Percent Area)

	None	D0-D4	D1-D4	D2-D4	D3-D4	D4
<b>Current</b>	92.45	7.55	1.52	0.04	0.00	0.00
<b>Last Week</b> <i>09-05-2017</i>	94.84	5.16	0.79	0.04	0.00	0.00
<b>3 Months Ago</b> <i>06-13-2017</i>	78.23	21.77	2.47	0.00	0.00	0.00
<b>Start of Calendar Year</b> <i>01-03-2017</i>	81.50	18.50	6.29	1.97	0.04	0.00
<b>Start of Water Year</b> <i>09-27-2016</i>	94.83	5.17	0.62	0.00	0.00	0.00
<b>One Year Ago</b> <i>09-13-2016</i>	96.22	3.78	0.67	0.09	0.00	0.00

Intensity:

- D0 Abnormally Dry
- D1 Moderate Drought
- D2 Severe Drought
- D3 Extreme Drought
- D4 Exceptional Drought

*The Drought Monitor focuses on broad-scale conditions. Local conditions may vary. See accompanying text summary for forecast statements.*

Author:

Richard Tinker  
CPC/NOAA/NWS/NCEP



Source: National Drought Mitigation Center, a partnership with USDA, U.S. Department of Commerce/NOAA, <http://droughtmonitor.unl.edu>