



# Texas Crop Progress and Condition

Southern Plains Regional Field Office

Post Office Box 70 Austin, Texas 78767

(800) 626-3142 · FAX (855) 270-2725 · www.nass.usda.gov/tx

**Issue: TX-CW3517**

**Weekly Summary for September 18 - 24**

**Released: September 25, 2017**

A storm hit the Plains with strong winds and hail damaging some fields and cooling temperature in the area. Precipitation in the Plains, the Trans-Pecos, South East Texas and the Upper Coast measured from 0.5 to 1.5 inches with isolated areas getting upwards to 2.5 inches of rain. There were 6.3 days suitable for fieldwork.

**Small Grain:** Winter wheat seeding had been completed in some areas of the state. Meanwhile producers in other areas delayed seeding operations waiting on better moisture conditions.

**Row Crops:** Cotton fields in areas of the Southern High Plains and the Low Plains were damaged by hail. Producers in the Upper Coast were still trying to salvage any remaining cotton not destroyed by Hurricane Harvey. Corn harvest in the Blacklands was slowed due to lack of elevator space. Sugarcane aphids continued to be an issue for sorghum producers in the Southern High Plains.

**Fruit, Vegetable, and Specialty Crops:** Winter vegetables were being planted in the Lower Valley. Harvest of spinach, onion and cabbage continued in South Texas. Pecans in the Southern Low Plains were showing signs of pests.

**Livestock, Range and Pasture:** Supplemental feeding of livestock continued in areas of the Cross Timbers, the Lower Valley and South Texas. Cattle and livestock condition remained good to fair across the state. Pasture conditions declined in those areas that did not receive rainfall last week. Army worm issues were reported in South Central Texas. Feral hog activity was causing problems to producers in North East Texas.

## Crop Progress

Stage	Percent of Acreage			
	Current Week	Previous Week	Previous Year	5 Year Average
<b>Corn</b>				
Dented	95	92	94	94
Mature	83	74	76	79
Harvested	68	67	64	65
<b>Cotton</b>				
Bolls Opening	45	31	46	51
Harvested	21	18	11	13
<b>Peanuts</b>				
Harvested	4	3	2	5
<b>Sorghum</b>				
Coloring	91	89	90	91
Mature	78	74	79	78
Harvested	72	70	64	66
<b>Soybeans</b>				
Dropping Leaves	76	70	82	76
Harvested	50	47	49	52
<b>Sunflowers</b>				
Harvested	50	47	49	51
<b>Winter Wheat</b>				
Planted	33	14	28	29
Emerged	4	(NA)	9	6
<b>Oats</b>				
Planted	15	(NA)	9	13

(NA) Not available.

### Crop Condition

Crop	Percent of Acreage					Index <sup>1</sup>	
	Excellent	Good	Fair	Poor	Very Poor	2017	2016
Corn	22	57	18	3	0	87	74
Cotton	18	41	27	6	8	75	66
Peanuts	16	53	25	6	0	82	78
Sorghum	16	62	18	3	1	85	76
Soybeans	17	43	28	8	4	76	68
Range and Pasture	8	35	35	16	6	--	--

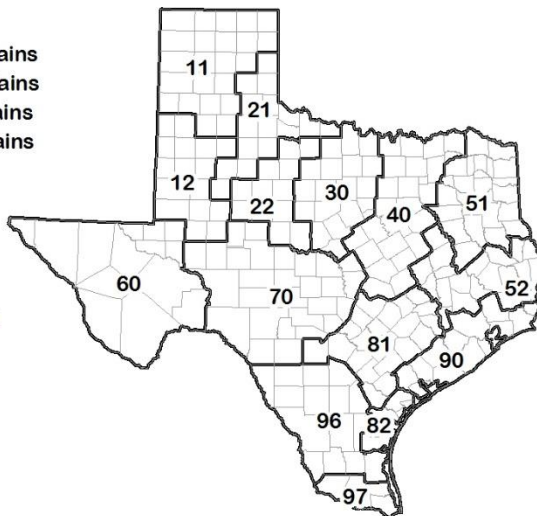
<sup>1</sup> The formula for the condition index is  $I = (5V + 25P + 60F + 90G + 110E)/100$  where I = crop condition index and V, P, F, G, E = percentage of crop rated very poor, poor, fair, good, excellent.

### Soil Moisture and Days Suitable by District

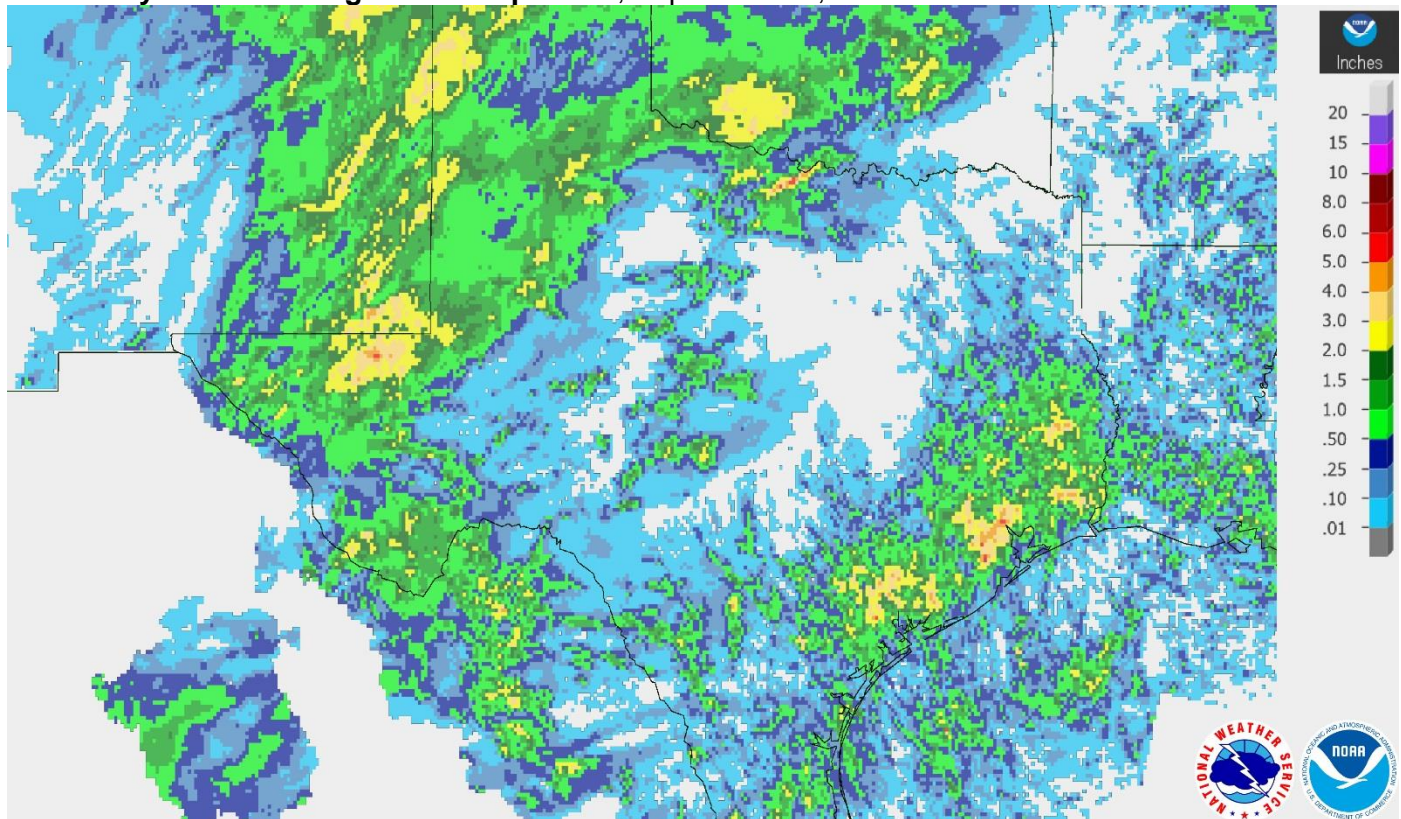
District	Topsoil Moisture Condition by District				Subsoil Moisture Condition by District				Days Suitable for Fieldwork
	Percentage of Acreage				Percentage of Acreage				
	Very Short	Short	Adequate	Surplus	Very Short	Short	Adequate	Surplus	
11	2	14	84	0	0	25	75	0	5.6
12	1	50	41	8	2	56	38	4	6.3
21	8	50	42	0	13	39	48	0	6.7
22	20	60	18	2	5	67	28	0	6.4
30	22	46	32	0	15	43	41	1	6.1
40	40	34	26	0	26	40	34	0	6.9
51	8	46	46	0	8	43	47	2	6.9
52	10	22	58	10	5	21	58	16	6.9
60	28	16	53	3	27	16	52	5	6.7
70	17	68	15	0	18	53	29	0	7.0
81	12	25	59	4	11	22	64	3	6.9
82	27	49	24	0	48	20	32	0	7.0
90	3	22	47	28	1	9	71	19	4.2
96	48	25	27	0	55	21	24	0	6.4
97	62	36	2	0	88	12	0	0	7.0
State	15	37	44	4	13	37	48	2	6.3

### Texas Agricultural Districts

- 11 Northern High Plains
- 12 Southern High Plains
- 21 Northern Low Plains
- 22 Southern Low Plains
- 30 Cross Timbers
- 40 Blacklands
- 51 North East
- 52 South East
- 60 Trans-Pecos
- 70 Edwards Plateau
- 81 South Central
- 82 Coaster Bend
- 90 Upper Coast
- 96 South
- 97 Lower Valley

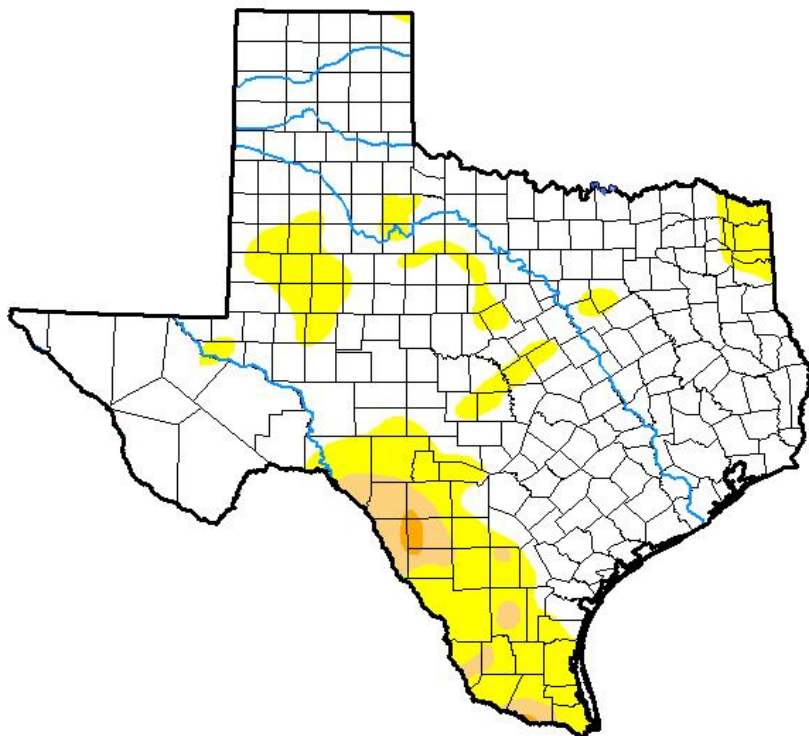


## Seven Day Observed Regional Precipitation, September 24, 2017



Source: National Weather Service, [www.nws.noaa.gov](http://www.nws.noaa.gov)

## Drought Monitor, Valid September 19, 2017



Drought Conditions (Percent Area)

	None	D0-D4	D1-D4	D2-D4	D3-D4	D4
<b>Current</b>	79.27	20.73	3.27	0.35	0.00	0.00
<b>Last Week</b> <i>09-12-2017</i>	92.45	7.55	1.52	0.04	0.00	0.00
<b>3 Months Ago</b> <i>06-20-2017</i>	72.65	27.35	4.84	0.00	0.00	0.00
<b>Start of Calendar Year</b> <i>01-03-2017</i>	81.50	18.50	6.29	1.97	0.04	0.00
<b>Start of Water Year</b> <i>09-27-2016</i>	94.83	5.17	0.62	0.00	0.00	0.00
<b>One Year Ago</b> <i>09-20-2016</i>	95.44	4.56	0.94	0.12	0.00	0.00

**Intensity:**

- D0 Abnormally Dry
- D1 Moderate Drought
- D2 Severe Drought
- D3 Extreme Drought
- D4 Exceptional Drought

*The Drought Monitor focuses on broad-scale conditions. Local conditions may vary. See accompanying text summary for forecast statements.*

**Author:**

Brad Rippey  
U.S. Department of Agriculture



Source: National Drought Mitigation Center, a partnership with USDA, U.S. Department of Commerce/NOAA, <http://droughtmonitor.unl.edu>