



Texas Crop Progress and Condition

Southern Plains Regional Field Office
Post Office Box 70 Austin, Texas 78767
(800) 626-3142 · FAX (855) 270-2725 · www.nass.usda.gov/tx

Issue: TX-CW3717

Weekly Summary for October 2 - 8

Released: October 10, 2017

Temperatures as low as 40 degrees in the Northern High Plains, resulted from the first strong cold front of the season. Precipitation in the Northern Plains ranged from 2.0 to 4.0 inches. The Lower Valley, East Texas, South Central Texas and the Blacklands received from 0.5 up to 2.0 inches of rain. There were 4.4 days suitable for fieldwork.

Small Grain: Rains helped wheat and oats progress, but delayed seeding. However, producers across many areas of the state continued seeding oats and wheat between rains. Armyworms were reported in the Blacklands and the Edwards Plateau.

Row Crops: Cotton in the Northern Plains and the Southern High Plains struggled to develop due to the lack of warm weather. The potential of a freeze concerned cotton producers in those districts. Southern Low Plains cotton producers applied defoliant with boll opener to help cotton advance toward maturity. Cotton harvest continued in the Blacklands and North East Texas. Corn harvest in the Northern High Plains was delayed due to precipitation and mycotoxin levels continued to be a concern among producers. Rain also delayed the harvest of sorghum in the Northern High Plains and peanuts in the Southern High Plains and Northern Low Plains.

Fruit, Vegetable, and Specialty Crops: Pecans in the Southern Low Plains, North East Texas and the Edwards Plateau were opening up.

Livestock, Range and Pasture: Cattle and livestock condition remained good to fair across the state. Reports indicate that the supplemental feeding in South Texas was suspended due to availability of good quality forage. Flies on cattle were a problem in the Coastal Bend. Pasture and range condition improved or were unchanged from the previous week in most parts of the state.

Crop Condition

Crop	Percent of Acreage					Index ¹	
	Excellent	Good	Fair	Poor	Very Poor	2017	2016
Corn	22	57	18	3	0	87	74
Cotton	19	37	27	5	12	72	67
Peanuts	9	25	62	4	0	82	79
Sorghum	16	62	18	3	1	85	76
Soybeans	17	43	28	8	4	76	69
Range and Pasture	6	36	38	15	5	--	--

¹ The formula for the condition index is $I = (5V + 25P + 60F + 90G + 110E)/100$ where I = crop condition index and V, P, F, G, E = percentage of crop rated very poor, poor, fair, good, excellent.

Crop Progress

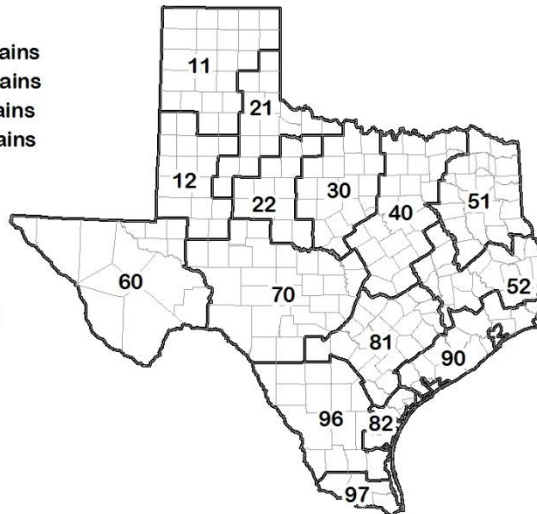
Stage	Percent of Acreage			
	Current Week	Previous Week	Previous Year	5 Year Average
Corn				
Mature	91	89	89	88
Harvested	76	75	76	73
Cotton				
Bolls Opening	60	56	68	71
Harvested	27	22	19	19
Peanuts				
Harvested	12	5	13	18
Sorghum				
Mature	82	80	85	84
Harvested	74	73	70	70
Soybeans				
Dropping Leaves	89	84	86	86
Harvested	66	55	57	63
Sunflowers				
Harvested	59	55	60	60
Winter Wheat				
Planted	54	40	46	52
Emerged	30	15	29	27
Oats				
Planted	40	26	27	40

Soil Moisture and Days Suitable by District

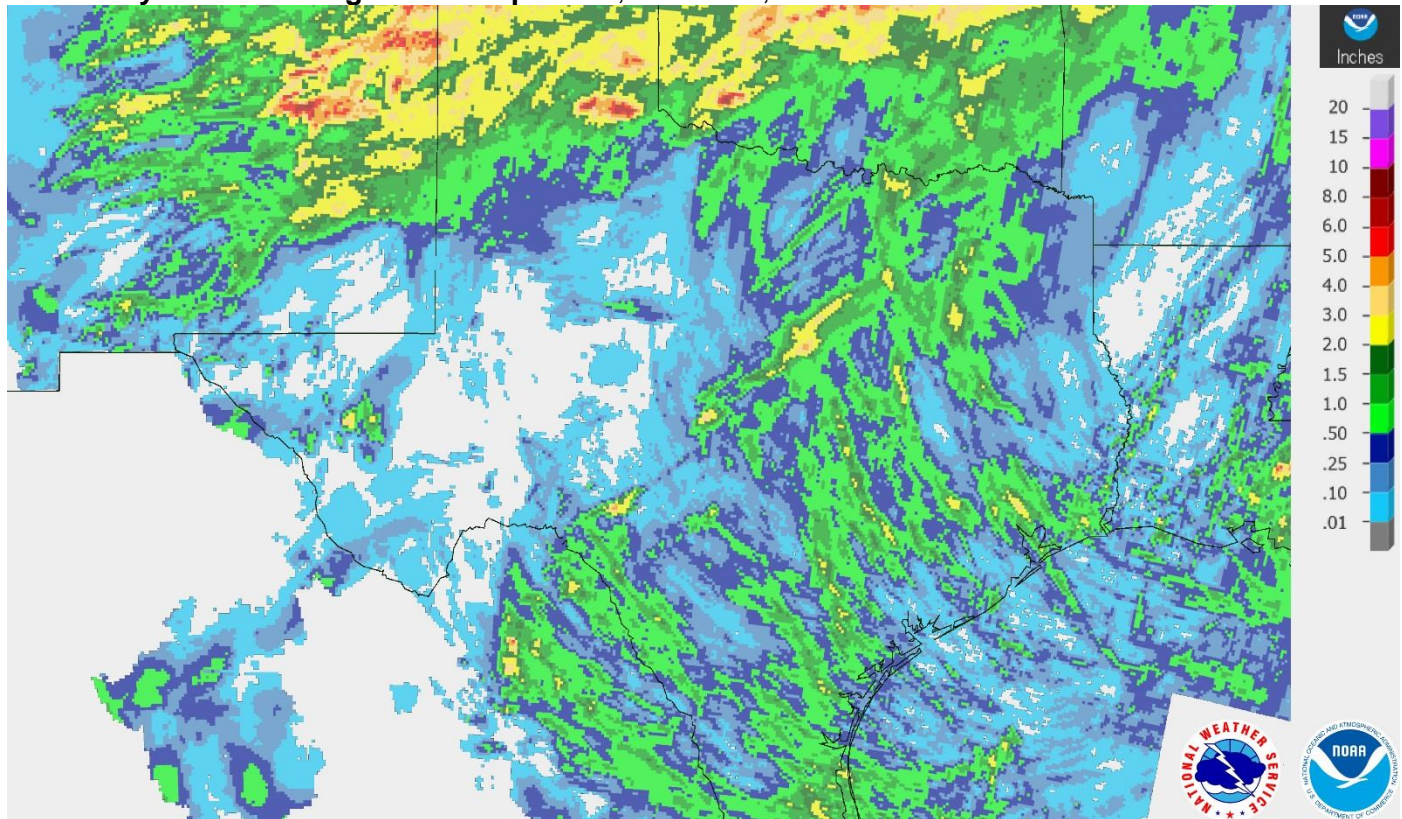
District	Topsoil Moisture Condition by District				Subsoil Moisture Condition by District				Days Suitable for Fieldwork
	Percentage of Acreage				Percentage of Acreage				
	Very Short	Short	Adequate	Surplus	Very Short	Short	Adequate	Surplus	
11	0	0	60	40	0	0	69	31	2.0
12	0	2	49	49	1	2	48	49	2.3
21	2	3	89	6	2	7	89	2	4.4
22	1	7	92	0	0	13	87	0	6.3
30	3	17	72	8	3	25	65	7	5.6
40	15	35	50	0	20	37	43	0	5.4
51	16	49	35	0	16	56	28	0	7.0
52	0	19	64	17	0	15	70	15	6.1
60	1	14	83	2	1	13	83	3	7.0
70	2	11	84	3	5	19	74	2	5.3
81	0	20	76	4	0	17	82	1	5.8
82	0	76	24	0	47	20	33	0	4.7
90	0	12	41	47	0	3	45	52	5.8
96	0	0	94	6	1	3	92	4	4.8
97	63	10	27	0	62	12	26	0	7.0
State	5	13	61	21	7	13	61	19	4.4

Texas Agricultural Districts

- 11 Northern High Plains
- 12 Southern High Plains
- 21 Northern Low Plains
- 22 Southern Low Plains
- 30 Cross Timbers
- 40 Blacklands
- 51 North East
- 52 South East
- 60 Trans-Pecos
- 70 Edwards Plateau
- 81 South Central
- 82 Coaster Bend
- 90 Upper Coast
- 96 South
- 97 Lower Valley

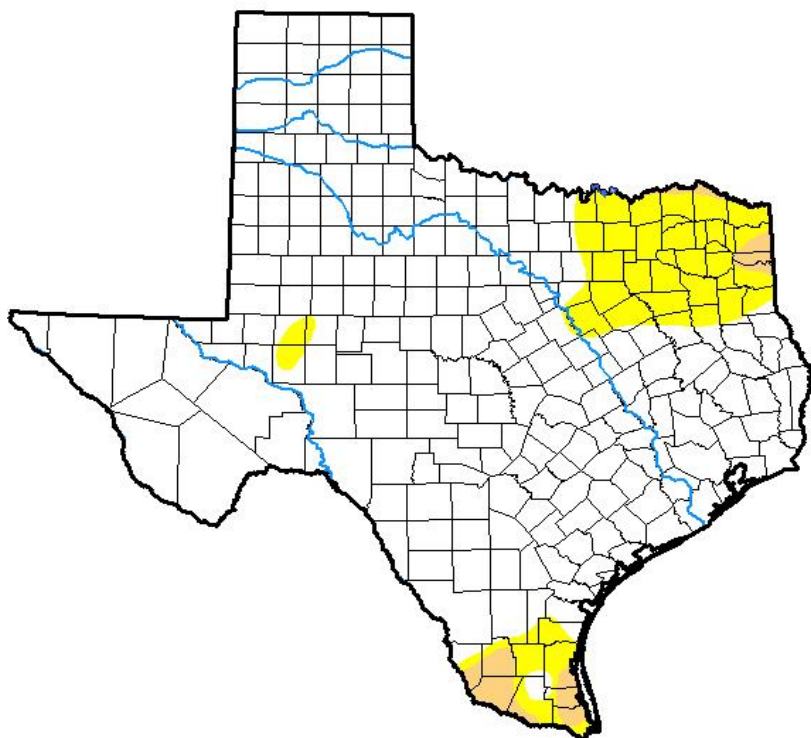


Seven Day Observed Regional Precipitation, October 9, 2017.



Source: National Weather Service, www.nws.noaa.gov

Drought Monitor, Valid October 3, 2017.



Drought Conditions (Percent Area)

	None	D0-D4	D1-D4	D2-D4	D3-D4	D4
Current	86.76	13.24	2.20	0.00	0.00	0.00
Last Week <i>09-26-2017</i>	70.54	29.46	4.17	0.04	0.00	0.00
3 Months Ago <i>07-04-2017</i>	73.51	26.49	6.01	0.92	0.00	0.00
Start of Calendar Year <i>01-03-2017</i>	81.50	18.50	6.29	1.97	0.04	0.00
Start of Water Year <i>09-26-2017</i>	70.54	29.46	4.17	0.04	0.00	0.00
One Year Ago <i>10-04-2016</i>	88.04	11.96	1.41	0.00	0.00	0.00

Intensity:

- D0 Abnormally Dry
- D1 Moderate Drought
- D2 Severe Drought
- D3 Extreme Drought
- D4 Exceptional Drought

The Drought Monitor focuses on broad-scale conditions. Local conditions may vary. See accompanying text summary for forecast statements.

Author:

Anthony Artusa
NOAA/NWS/NCEP/CPC



Source: National Drought Mitigation Center, a partnership with USDA, U.S. Department of Commerce/NOAA, <http://droughtmonitor.unl.edu>

Texas Crop Progress and Condition (October 2017)

USDA, National Agricultural Statistics Service, Southern Plains Regional Field Office