



Texas Crop Progress and Condition

Southern Plains Regional Field Office

Post Office Box 70 Austin, Texas 78767

(800) 626-3142 · FAX (855) 270-2725 · www.nass.usda.gov/tx

Issue: TX-CW3817

Weekly Summary for October 9-15

Released: October 16, 2017

Moisture conditions were decreasing though out most of the state due to the lack of rain during the past week. Small areas in North East Texas, the Blacklands and the Edwards Plateau received from traces up to an inch of rain. Precipitation in the Lower Valley ranged from 0.5 to 2.5 inches, with isolated area receiving upwards of 5 inches. There were 6.4 days suitable for fieldwork.

Small Grain: Armyworms were reaching treatment thresholds in small grain fields in the Southern Plains, the Northern Low Plains, the Cross Timbers, the Blacklands, the Edwards Plateau, and South Texas. Spraying operations were underway in areas where heavier infestations were occurring.

Row Crops: Last week's warmer weather aided cotton development in the Plains. Bolls were opening in the Southern Plains and the Edwards Plateau. Cotton harvest continued in the Blacklands. Corn and Sorghum harvest continued in the Northern High Plains.

Fruit, Vegetable, and Specialty Crops: Vegetable producers in North East Texas were irrigating fall vegetable crops. Pecan harvest started in areas of the Cross Timbers.

Livestock, Range and Pasture: Cattle and livestock condition remained good to fair across the state. Pasture and range condition was rated mostly fair to good. However, pastures in North East Texas were getting drier and cattle producers had begun feeding hay to supplement grazing. Feral hog activity in pastures and hay meadows continued in North East Texas.

Crop Progress

Stage	Percent of Acreage			
	Current Week	Previous Week	Previous Year	5 Year Average
Corn				
Mature	95	91	94	92
Harvested	80	76	79	77
Cotton				
Bolls Opening	73	60	82	80
Harvested	30	27	22	22
Peanuts				
Harvested	15	12	23	29
Sorghum				
Coloring		96		
Mature	89	82	89	88
Harvested	79	74	73	72
Soybeans				
Dropping Leaves	90	89	89	90
Harvested	70	66	68	71
Sunflowers				
Harvested	65	59	64	66
Winter Wheat				
Planted	66	54	63	63
Emerged	35	30	32	37
Oats				
Planted	55	40	51	56
Emerged	25	(NA)	19	25

(NA) Not available.

Crop Condition

Crop	Percent of Acreage					Index ¹	
	Excellent	Good	Fair	Poor	Very Poor	2017	2016
Corn	22	57	18	3	0	87	73
Cotton	14	40	32	7	7	73	67
Peanuts	16	45	33	6	0	79	78
Sorghum	16	62	18	3	1	85	76
Soybeans	17	43	28	8	4	76	68
Range and Pasture	8	36	36	15	5	--	--

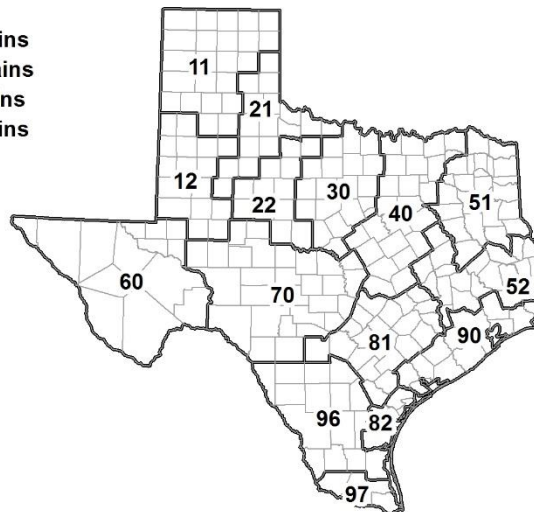
¹ The formula for the condition index is $I = (5V + 25P + 60F + 90G + 110E)/100$ where I = crop condition index and V, P, F, G, E = percentage of crop rated very poor, poor, fair, good, excellent.

Soil Moisture and Days Suitable by District

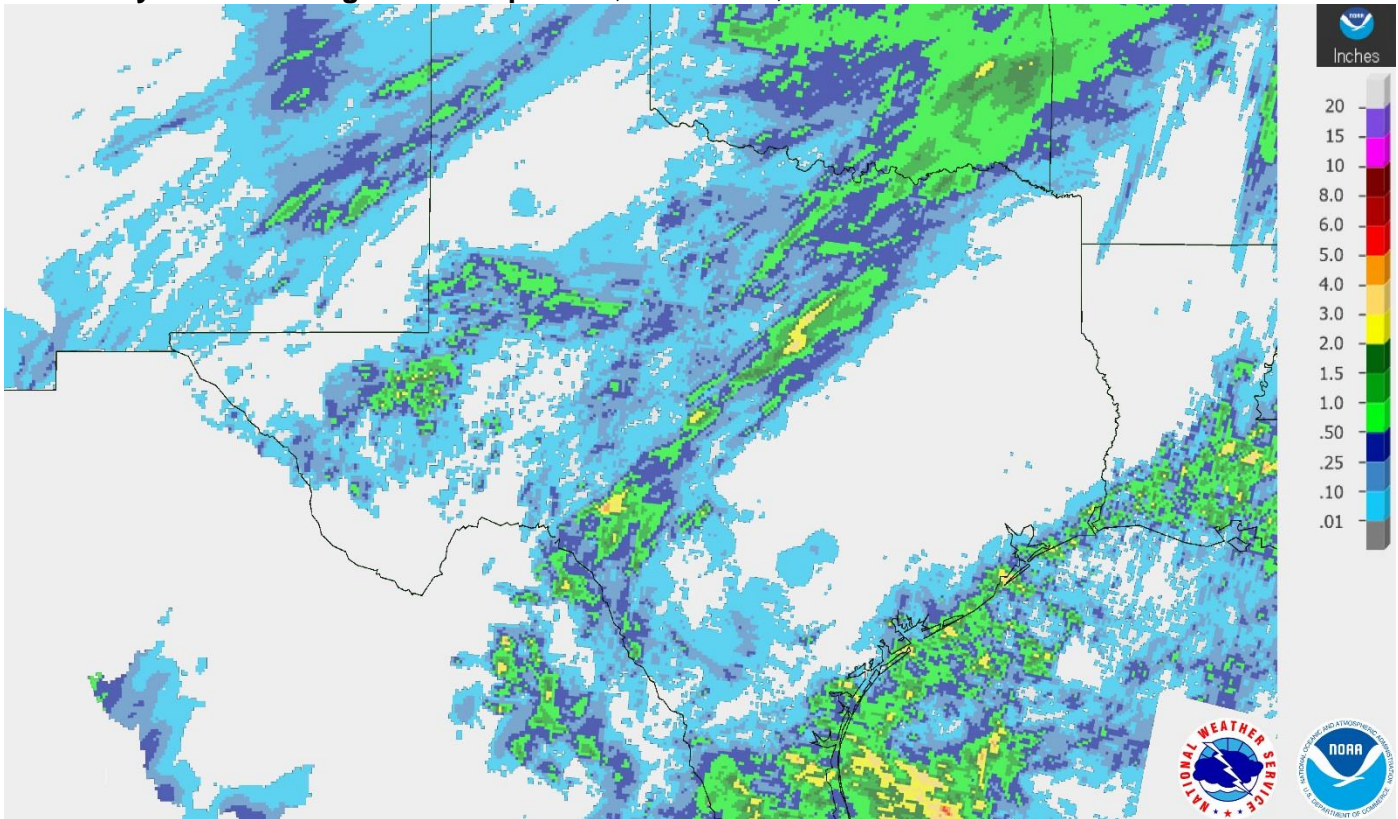
District	Topsoil Moisture Condition by District				Subsoil Moisture Condition by District				Days Suitable for Fieldwork
	Percentage of Acreage				Percentage of Acreage				
	Very Short	Short	Adequate	Surplus	Very Short	Short	Adequate	Surplus	
11	0	2	84	14	0	0	86	14	5.7
12	0	9	83	8	2	9	77	12	6.7
21	2	8	90	0	2	10	88	0	6.5
22	4	12	84	0	0	11	88	1	6.1
30	5	24	67	4	5	27	63	5	6.3
40	19	41	40	0	22	38	40	0	6.4
51	21	50	29	0	27	48	25	0	7.0
52	2	41	56	1	1	37	61	1	6.8
60	23	8	68	1	19	8	73	0	6.8
70	7	23	67	3	10	24	66	0	6.6
81	2	22	73	3	1	18	78	3	6.8
82	0	100	0	0	70	30	0	0	7.0
90	1	18	67	14	1	13	62	24	6.8
96	0	21	76	3	0	8	92	0	6.4
97	12	23	4	61	10	29	0	61	7.0
State	5	20	67	8	7	17	67	9	6.4

Texas Agricultural Districts

- 11 Northern High Plains
- 12 Southern High Plains
- 21 Northern Low Plains
- 22 Southern Low Plains
- 30 Cross Timbers
- 40 Blacklands
- 51 North East
- 52 South East
- 60 Trans-Pecos
- 70 Edwards Plateau
- 81 South Central
- 82 Coastal Bend
- 90 Upper Coast
- 96 South
- 97 Lower Valley

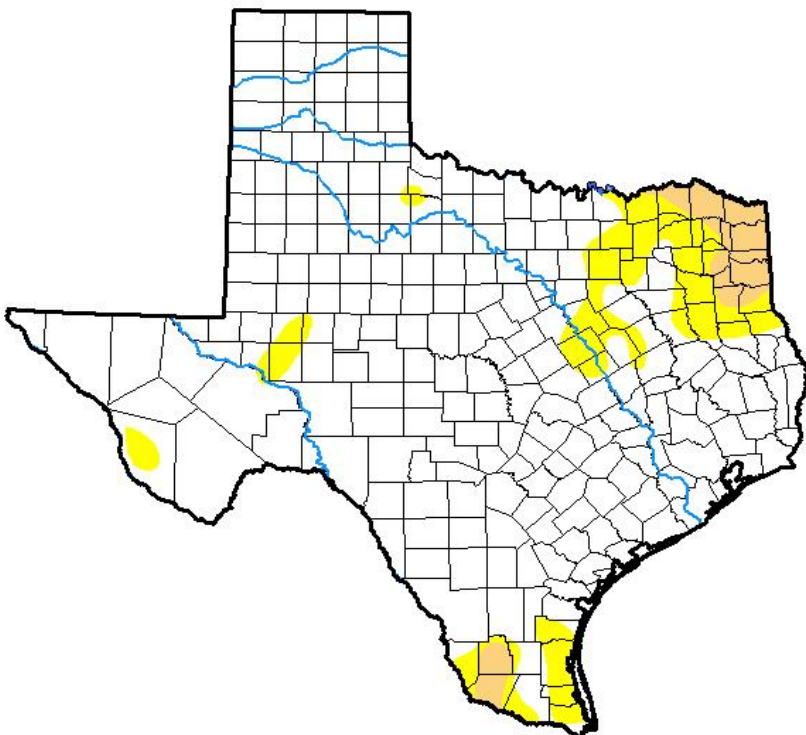


Seven Day Observed Regional Precipitation, October 15, 2017.



Source: National Weather Service, www.nws.noaa.gov

Drought Monitor, Valid October 10, 2017.



Drought Conditions (Percent Area)

	None	D0-D4	D1-D4	D2-D4	D3-D4	D4
Current	87.34	12.66	3.31	0.00	0.00	0.00
Last Week <i>10-03-2017</i>	86.76	13.24	2.20	0.00	0.00	0.00
3 Months Ago <i>07-11-2017</i>	76.12	23.88	6.57	0.00	0.00	0.00
Start of Calendar Year <i>01-03-2017</i>	81.50	18.50	6.29	1.97	0.04	0.00
Start of Water Year <i>09-26-2017</i>	70.54	29.46	4.17	0.04	0.00	0.00
One Year Ago <i>10-11-2016</i>	78.07	21.93	4.40	0.00	0.00	0.00

Intensity:

- D0 Abnormally Dry
- D1 Moderate Drought
- D2 Severe Drought
- D3 Extreme Drought
- D4 Exceptional Drought

The Drought Monitor focuses on broad-scale conditions. Local conditions may vary. See accompanying text summary for forecast statements.

Author:

Anthony Artusa
NOAA/NWS/NCEP/CPC



Source: National Drought Mitigation Center, a partnership with USDA, U.S. Department of Commerce/NOAA, <http://droughtmonitor.unl.edu>