



Texas Crop Progress and Condition

Southern Plains Regional Field Office
Post Office Box 70 Austin, Texas 78767
(800) 626-3142 · FAX (855) 270-2725 · www.nass.usda.gov/tx

Issue: TX-CW3917

Weekly Summary for October 16-22

Released: October 23, 2017

Temperatures were a few degrees cooler than the previous week across many areas of the state, and significantly cooler in other areas as a strong cold front moved through. Rainfall between 0.5 and 2.0 inches covered the Cross Timbers, the Blacklands, East Texas, South Central Texas, the Upper Coast, and the Coastal Bend. Isolated areas in the Upper Coast received upwards of 5 inches. There were 6.6 days suitable for fieldwork.

Small Grain: Armyworms continued to be an issue in small grain fields in the Southern Plains, the Northern Low Plains, the Cross Timbers, the Blacklands, the Edwards Plateau, and South Texas. Some producers have been forced to replant the fields due to the worms.

Row Crops: Cotton harvest was underway in the Plains, the Blacklands, the Trans-Pecos and the Edwards Plateau. Corn, sorghum, and soybean harvests were in full swing in the Northern High Plains. Peanuts were being harvested in the Low Plains and South Texas.

Fruit, Vegetable, and Specialty Crops: Producers were planting vegetables in the Lower Valley. Pecan harvest started in the Southern Low Plains, the Cross Timbers and the Trans-Pecos.

Livestock, Range and Pasture: Cattle and livestock condition remained mostly good to fair across the state. However, producers were using supplemental feeding in the Cross Timbers due to inadequate pasture. Some producers reported emerging respiratory problems in cattle. Horn flies continued being an issue in areas of North East Texas. Pasture and range condition did not change much from the previous week, remaining mostly fair to good across the state.

Crop Progress

| Stage | Percent of Acreage | | | |
|---------------------|--------------------|---------------|---------------|----------------|
| | Current Week | Previous Week | Previous Year | 5 Year Average |
| Corn | | | | |
| Harvested | 83 | 80 | 84 | 83 |
| Cotton | | | | |
| Bolls Opening | 80 | 73 | 89 | 87 |
| Harvested | 31 | 30 | 27 | 28 |
| Peanuts | | | | |
| Harvested | 30 | 15 | 42 | 44 |
| Sorghum | | | | |
| Mature | 92 | 89 | 93 | 91 |
| Harvested | 80 | 79 | 77 | 75 |
| Soybeans | | | | |
| Dropping Leaves | 91 | 90 | 94 | 95 |
| Harvested | 83 | 70 | 77 | 77 |
| Sunflowers | | | | |
| Harvested | 69 | 65 | 69 | 70 |
| Winter Wheat | | | | |
| Planted | 70 | 66 | 67 | 70 |
| Emerged | 53 | 35 | 41 | 47 |
| Oats | | | | |
| Planted | 75 | 55 | 64 | 69 |
| Emerged | 49 | 25 | 24 | 36 |

Crop Condition

| Crop | Percent of Acreage | | | | | Index ¹ | |
|-------------------|--------------------|------|------|------|-----------|--------------------|------|
| | Excellent | Good | Fair | Poor | Very Poor | 2017 | 2016 |
| Corn | 22 | 57 | 18 | 3 | 0 | 87 | 73 |
| Cotton | 13 | 36 | 35 | 9 | 7 | 70 | 67 |
| Peanuts | 15 | 50 | 29 | 6 | 0 | 80 | 78 |
| Sorghum | 16 | 62 | 18 | 3 | 1 | 85 | 76 |
| Soybeans | 17 | 43 | 28 | 8 | 4 | 76 | 68 |
| Winter Wheat | 9 | 34 | 42 | 13 | 2 | 69 | 67 |
| Range and Pasture | 8 | 36 | 36 | 15 | 5 | -- | -- |

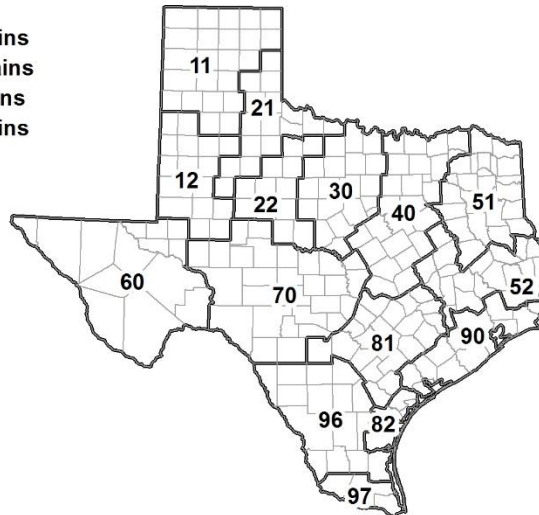
¹ The formula for the condition index is $I = (5V + 25P + 60F + 90G + 110E)/100$ where I = crop condition index and V, P, F, G, E = percentage of crop rated very poor, poor, fair, good, excellent.

Soil Moisture and Days Suitable by District

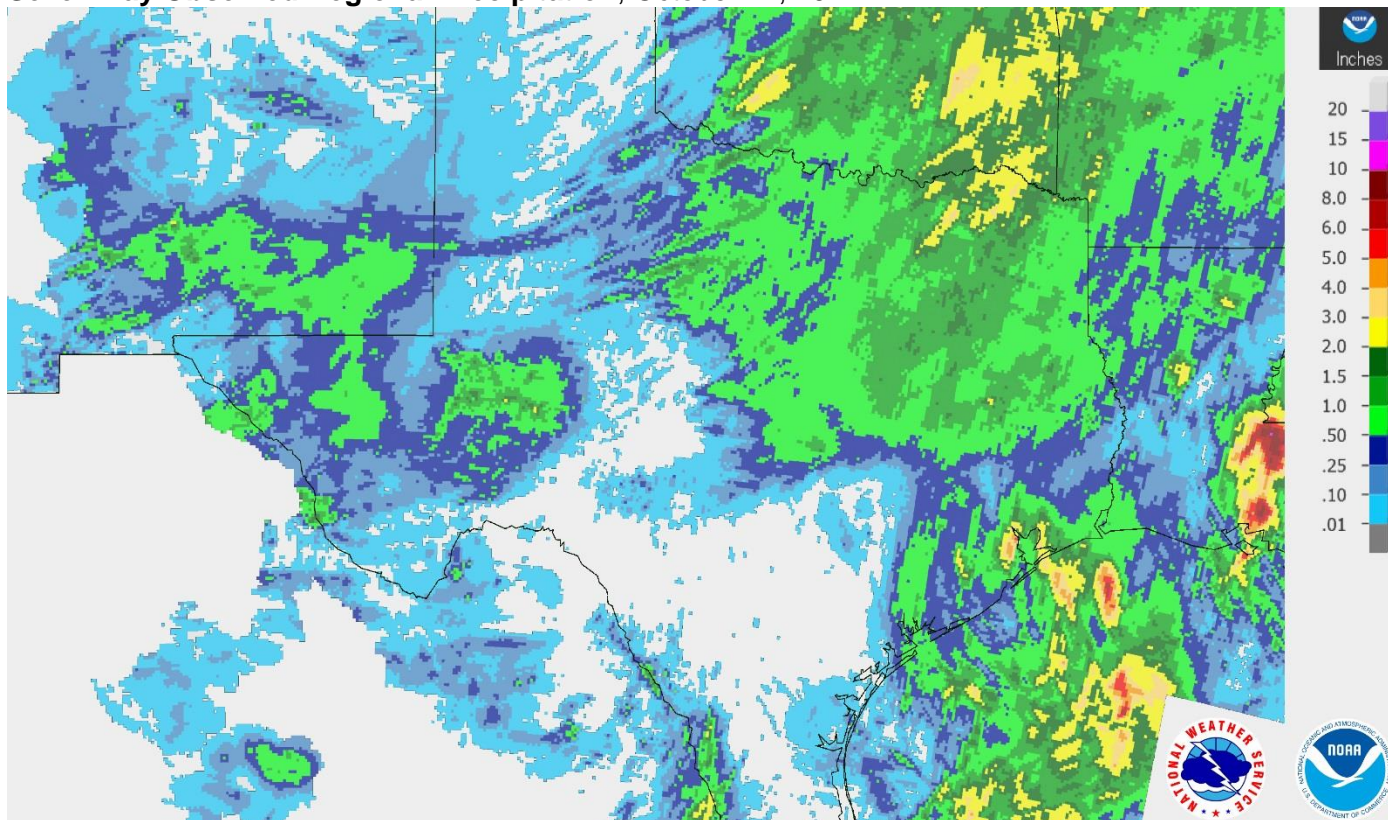
| District | Topsoil Moisture Condition by District | | | | Subsoil Moisture Condition by District | | | | Days Suitable for Fieldwork |
|----------|--|-------|----------|---------|--|-------|----------|---------|-----------------------------|
| | Percentage of Acreage | | | | Percentage of Acreage | | | | |
| | Very Short | Short | Adequate | Surplus | Very Short | Short | Adequate | Surplus | |
| 11 | 0 | 14 | 86 | 0 | 0 | 4 | 94 | 2 | 6.6 |
| 12 | 0 | 34 | 58 | 8 | 2 | 24 | 59 | 15 | 7.0 |
| 21 | 2 | 11 | 87 | 0 | 2 | 10 | 88 | 0 | 6.6 |
| 22 | 5 | 18 | 75 | 2 | 1 | 21 | 78 | 0 | 6.5 |
| 30 | 10 | 30 | 56 | 4 | 4 | 30 | 63 | 3 | 6.1 |
| 40 | 7 | 39 | 52 | 2 | 16 | 30 | 51 | 3 | 6.6 |
| 51 | 15 | 52 | 33 | 0 | 15 | 59 | 26 | 0 | 6.8 |
| 52 | 4 | 21 | 70 | 5 | 2 | 21 | 72 | 5 | 6.2 |
| 60 | 34 | 15 | 51 | 0 | 31 | 15 | 54 | 0 | 6.6 |
| 70 | 2 | 23 | 73 | 2 | 2 | 21 | 76 | 1 | 6.8 |
| 81 | 0 | 37 | 60 | 3 | 0 | 31 | 67 | 2 | 6.5 |
| 82 | 0 | 76 | 24 | 0 | 47 | 25 | 28 | 0 | 7.0 |
| 90 | 0 | 33 | 48 | 19 | 0 | 30 | 46 | 24 | 5.7 |
| 96 | 15 | 27 | 54 | 4 | 1 | 37 | 59 | 3 | 6.9 |
| 97 | 45 | 27 | 28 | 0 | 62 | 12 | 26 | 0 | 7.0 |
| State | 5 | 28 | 64 | 3 | 7 | 22 | 66 | 5 | 6.6 |

Texas Agricultural Districts

- 11 Northern High Plains
- 12 Southern High Plains
- 21 Northern Low Plains
- 22 Southern Low Plains
- 30 Cross Timbers
- 40 Blacklands
- 51 North East
- 52 South East
- 60 Trans-Pecos
- 70 Edwards Plateau
- 81 South Central
- 82 Coastal Bend
- 90 Upper Coast
- 96 South
- 97 Lower Valley

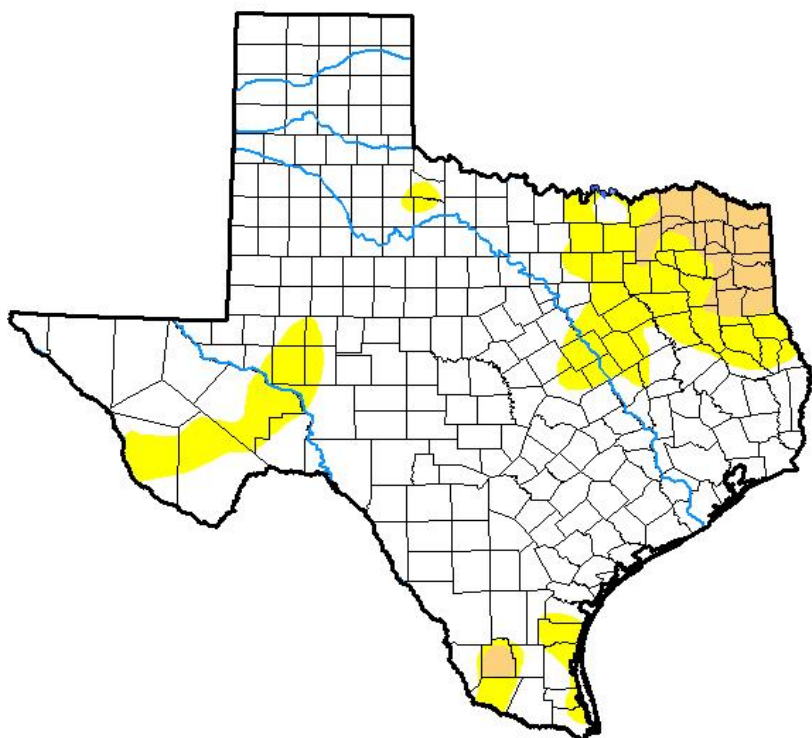


Seven Day Observed Regional Precipitation, October 22, 2017.



Source: National Weather Service, www.nws.noaa.gov

Drought Monitor, Valid October 17, 2017.



Drought Conditions (Percent Area)

| | None | D0-D4 | D1-D4 | D2-D4 | D3-D4 | D4 |
|---|-------|-------|-------|-------|-------|------|
| Current | 80.83 | 19.17 | 4.32 | 0.00 | 0.00 | 0.00 |
| Last Week <i>10-10-2017</i> | 87.34 | 12.66 | 3.31 | 0.00 | 0.00 | 0.00 |
| 3 Months Ago <i>07-18-2017</i> | 74.42 | 25.58 | 7.85 | 0.46 | 0.00 | 0.00 |
| Start of Calendar Year <i>01-03-2017</i> | 81.50 | 18.50 | 6.29 | 1.97 | 0.04 | 0.00 |
| Start of Water Year <i>09-26-2017</i> | 70.54 | 29.46 | 4.17 | 0.04 | 0.00 | 0.00 |
| One Year Ago <i>10-18-2016</i> | 70.53 | 29.47 | 5.91 | 0.00 | 0.00 | 0.00 |

Intensity:

- D0 Abnormally Dry
- D1 Moderate Drought
- D2 Severe Drought
- D3 Extreme Drought
- D4 Exceptional Drought

The Drought Monitor focuses on broad-scale conditions. Local conditions may vary. See accompanying text summary for forecast statements.

Author:

Jessica Blunden
NCEI/NOAA



Source: National Drought Mitigation Center, a partnership with USDA, U.S. Department of Commerce/NOAA, <http://droughtmonitor.unl.edu>