



Texas Crop Progress and Condition

Southern Plains Regional Field Office
Post Office Box 70 Austin, Texas 78767
(800) 626-3142 · FAX (855) 270-2725 · www.nass.usda.gov/tx

Issue: TX-CW4017 c Weekly Summary for October 23-29 Released: October 30, 2017

A strong cold front hit Texas resulting in freezing temperatures in the Plains and a few other areas. Some cotton producers reported freeze damage. The biggest rain concentration was reported in the Upper Coast and South East Texas with an average precipitation between 0.5 and 1.5 inches. Most of the rest of the state recorded no precipitation up to trace amounts. There were 6.6 days suitable for fieldwork.

Small Grain: Armyworms continued being an issue in small grain fields across the state. Planting and replanting of wheat continued in many areas. Early planted wheat continued emerging in most parts of the state. Oats had begun to emerge in the Low Plains.

Row Crops: A freeze affected cotton fields in the Plains, with some producers reporting damage to late maturing fields. However, cotton harvest continued in full swing in the Plains, the Blacklands and the Trans-Pecos. Corn harvest was near completion in the Blacklands.

Fruit, Vegetable, and Specialty Crops: Vegetable harvest has been completed in South Texas. Producers were preparing the soil for next season. Vegetables continued to be planted in the Lower Valley. Pecan harvest was in full swing in South Texas, South Central Texas, the Edwards Plateau, the Cross Timbers and the Southern Low Plains. The cold front caused immature nuts to drop early in the Trans-Pecos.

Livestock, Range and Pasture: Cattle producers were using supplemental feeding in the Cross Timbers, North East Texas, the Coastal Bend and South Texas. However, livestock condition remained mostly good to fair across the state. Pasture and range condition have been adversely affected by the drought. Cooler temperatures slowed growth of pastures.

Crop Progress

Stage	Percent of Acreage			
	Current Week	Previous Week	Previous Year	5 Year Average
Corn				
Harvested	88	83	89	88
Cotton				
Bolls Opening	90	80	93	93
Harvested	37	31	30	35
Peanuts				
Harvested	45	30	55	60
Sorghum				
Coloring				
Mature	97	92	94	94
Harvested	82	80	80	78
Soybeans				
Dropping Leaves	95	91	96	96
Harvested	89	83	80	80
Sunflowers				
Harvested	73	69	72	73
Winter Wheat				
Planted	79	70	74	77
Emerged	60	53	54	58
Oats				
Planted	90	75	74	76
Emerged	64	49	29	42

Crop Condition

Crop	Percent of Acreage					Index ¹	
	Excellent	Good	Fair	Poor	Very Poor	2017	2016
Corn	22	57	18	3	0	87	73
Cotton	11	35	36	11	7	70	68
Peanuts	16	52	25	7	0	80	79
Sorghum	16	62	18	3	1	85	76
Soybeans	17	43	28	8	4	76	68
Wheat	7	36	41	13	3	68	65
Oats	5	25	47	16	7	61	--
Range and Pasture	5	30	40	18	7	--	--

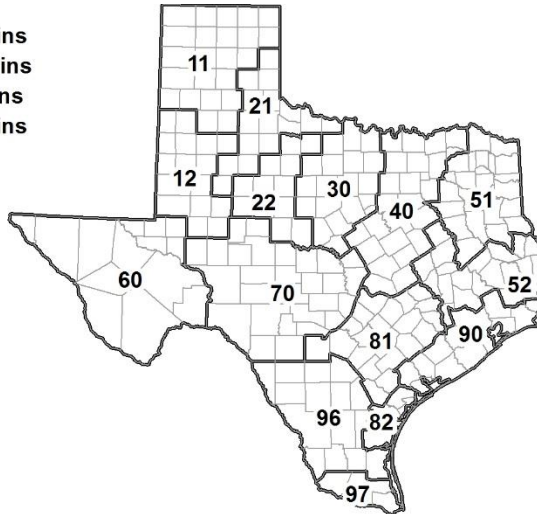
¹ The formula for the condition index is $I = (5V + 25P + 60F + 90G + 110E)/100$ where I = crop condition index and V, P, F, G, E = percentage of crop rated very poor, poor, fair, good, excellent.

Soil Moisture and Days Suitable by District

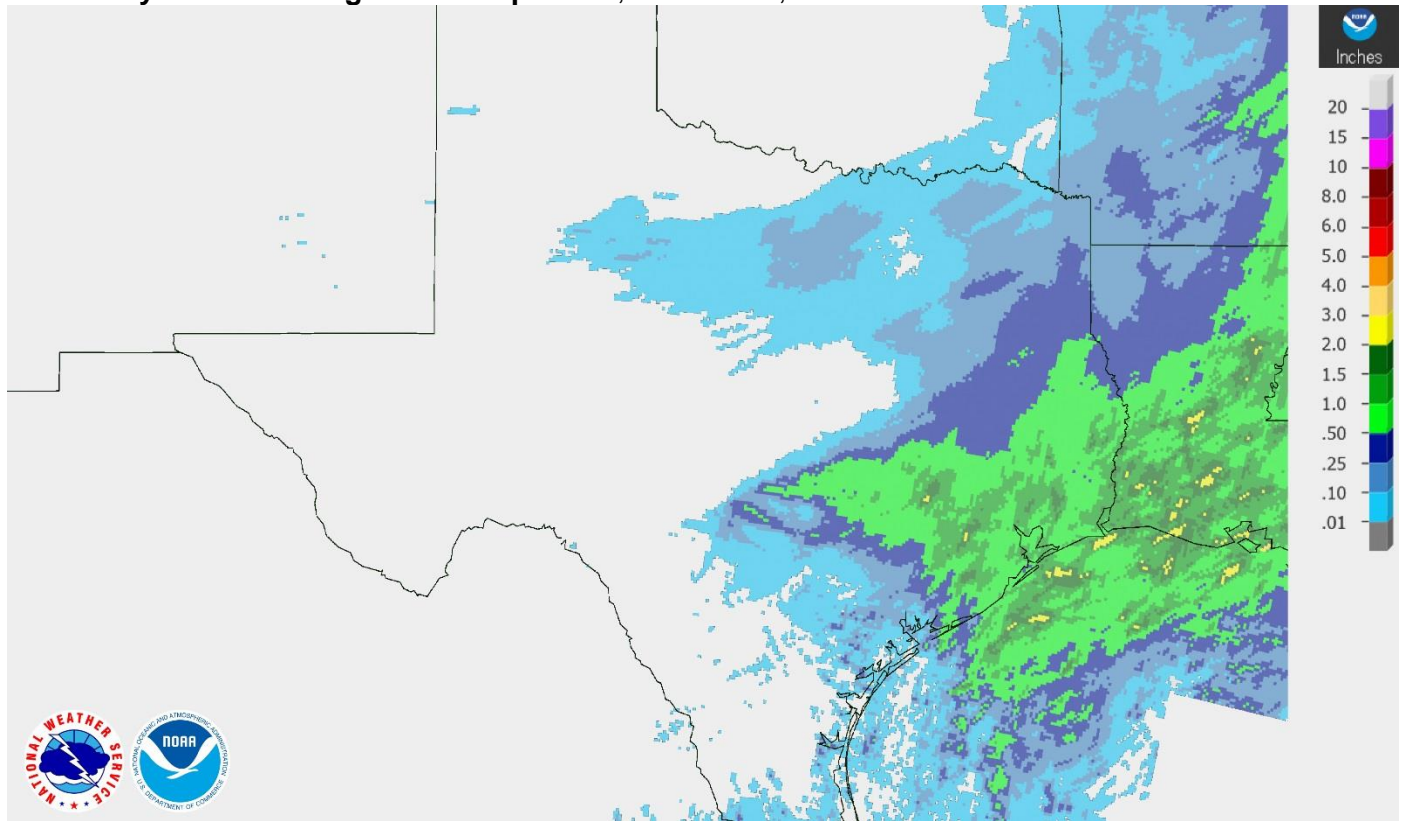
District	Topsoil Moisture Condition by District				Subsoil Moisture Condition by District				Days Suitable for Fieldwork
	Percentage of Acreage				Percentage of Acreage				
	Very Short	Short	Adequate	Surplus	Very Short	Short	Adequate	Surplus	
11	0	32	68	0	0	21	79	0	6.7
12	1	50	49	0	4	43	46	7	6.8
21	2	20	78	0	2	17	81	0	6.5
22	3	26	71	0	4	20	76	0	6.8
30	7	36	56	1	7	35	56	2	6.0
40	9	50	39	2	21	29	47	3	6.1
51	15	58	27	0	19	63	18	0	6.8
52	4	43	53	0	3	39	58	0	6.2
60	7	12	81	0	7	13	80	0	6.5
70	11	34	54	1	8	28	63	1	6.6
81	0	64	36	0	6	46	48	0	6.7
82	0	100	0	0	70	30	0	0	7.0
90	6	34	57	3	3	33	60	4	5.7
96	15	59	26	0	16	43	41	0	6.9
97	45	27	28	0	62	12	26	0	7.0
State	6	42	52	0	10	31	57	2	6.6

Texas Agricultural Districts

- 11 Northern High Plains
- 12 Southern High Plains
- 21 Northern Low Plains
- 22 Southern Low Plains
- 30 Cross Timbers
- 40 Blacklands
- 51 North East
- 52 South East
- 60 Trans-Pecos
- 70 Edwards Plateau
- 81 South Central
- 82 Coastal Bend
- 90 Upper Coast
- 96 South
- 97 Lower Valley

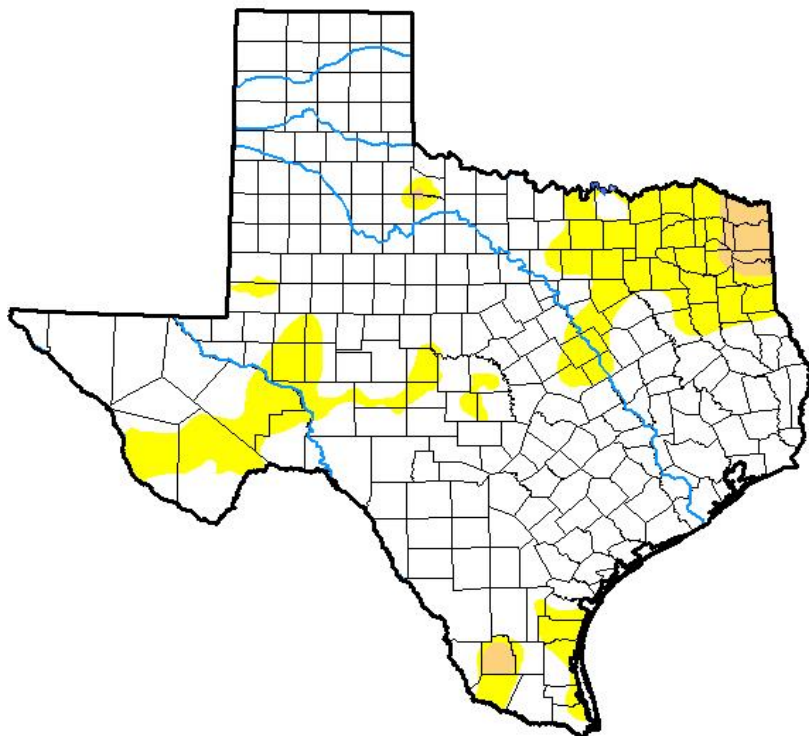


Seven Day Observed Regional Precipitation, October 29, 2017.



Source: National Weather Service, www.nws.noaa.gov

Drought Monitor, Valid October 24, 2017.



Drought Conditions (Percent Area)

	None	D0-D4	D1-D4	D2-D4	D3-D4	D4
Current	80.89	19.11	1.74	0.00	0.00	0.00
Last Week <i>10-17-2017</i>	80.83	19.17	4.32	0.00	0.00	0.00
3 Months Ago <i>07-25-2017</i>	75.04	24.96	8.99	1.26	0.00	0.00
Start of Calendar Year <i>01-03-2017</i>	81.50	18.50	6.29	1.97	0.04	0.00
Start of Water Year <i>09-26-2017</i>	70.54	29.46	4.17	0.04	0.00	0.00
One Year Ago <i>10-25-2016</i>	64.92	35.08	10.84	1.10	0.00	0.00

Intensity:

- D0 Abnormally Dry
- D1 Moderate Drought
- D2 Severe Drought
- D3 Extreme Drought
- D4 Exceptional Drought

The Drought Monitor focuses on broad-scale conditions. Local conditions may vary. See accompanying text summary for forecast statements.

Author:

Eric Luebehusen
U.S. Department of Agriculture



Source: National Drought Mitigation Center, a partnership with USDA, U.S. Department of Commerce/NOAA, <http://droughtmonitor.unl.edu>