



Texas Crop Progress and Condition

Southern Plains Regional Field Office
Post Office Box 70 Austin, Texas 78767
(800) 626-3142 · FAX (855) 270-2725 · www.nass.usda.gov/tx

Issue: TX-CW4117

Weekly Summary for Oct 30-Nov 5

Released: November 6, 2017

Average temperatures increased from the previous week across most of the state. Rainfall ranged from 0.5 to 1.5 inches in East Texas and the Upper Coast, with isolated areas receiving upwards of 3.0 inches. Most of the rest of the state recorded no precipitations up to trace amounts. There were 6.6 days suitable for fieldwork.

Small Grain: Small grains crops suffered from a lack of precipitation in some areas of the Cross Timbers, the Blacklands and South Texas. Even with the dry conditions, producers in the Blacklands and South Texas continued re-seeding wheat.

Row Crops: Cotton harvest continued in the Plains, the Cross Timbers, the Blacklands, North East Texas, the Trans-Pecos and the Edwards Plateau. Some areas in the Plains had freezing temperatures, which affected the progress of cotton.

Fruit, Vegetable, and Specialty Crops: Pecan harvest was in full swing in South Texas, South Central Texas, the Trans-Pecos, and the Cross Timbers. A few pecans were starting to come off in the Southern High Plains.

Livestock, Range and Pasture: Livestock condition remained mostly good across the state. However producers in the Cross Timbers, South Texas, the Coastal Bend, North East Texas, the Lower Valley and the Northern High Plains were feeding supplemental hay and protein. Pasture and range condition remained good to fair, but the dry weather had a negative effect on conditions in areas of South Central Texas and the Coastal Bend. Armyworms continued to be a problem in the Blacklands and South Texas.

Crop Progress

Stage	Percent of Acreage			
	Current Week	Previous Week	Previous Year	5 Year Average
Corn				
Harvested	92	88	94	93
Cotton				
Bolls Opening	93	90	96	95
Harvested	44	37	38	44
Peanuts				
Harvested	60	45	64	74
Sorghum				
Harvested	84	82	83	82
Soybeans				
Harvested	92	89	84	82
Sunflowers				
Harvested	80	73	80	80
Winter Wheat				
Planted	85	79	84	83
Emerged	69	60	69	67
Oats				
Planted	94	90	84	85
Emerged	69	64	55	57

Crop Condition

Crop	Percent of Acreage					Index ¹	
	Excellent	Good	Fair	Poor	Very Poor	2017	2016
Corn	22	57	18	3	0	87	73
Cotton	15	31	26	8	20	63	68
Peanuts	3	62	34	1	0	80	79
Sorghum	16	62	18	3	1	85	76
Soybeans	17	43	28	8	4	76	68
Wheat	13	36	37	11	3	72	67
Oats	4	20	41	22	13	53	(NA)
Range and Pasture	3	28	42	20	7	--	--

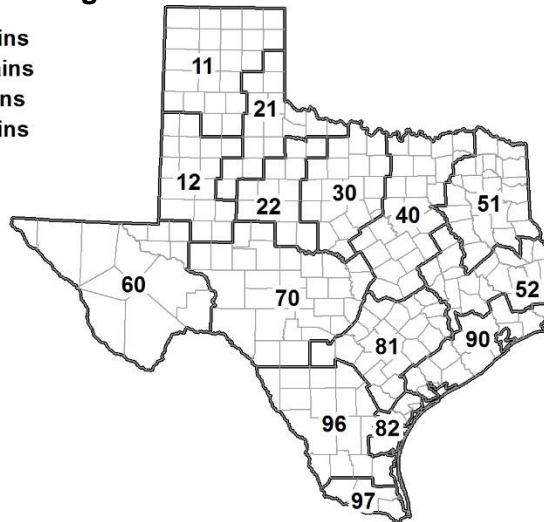
(NA) Not available. ¹ The formula for the condition index is $I = (5V + 25P + 60F + 90G + 110E)/100$ where I = crop condition index and V, P, F, G, E = percentage of crop rated very poor, poor, fair, good, excellent.

Soil Moisture and Days Suitable by District

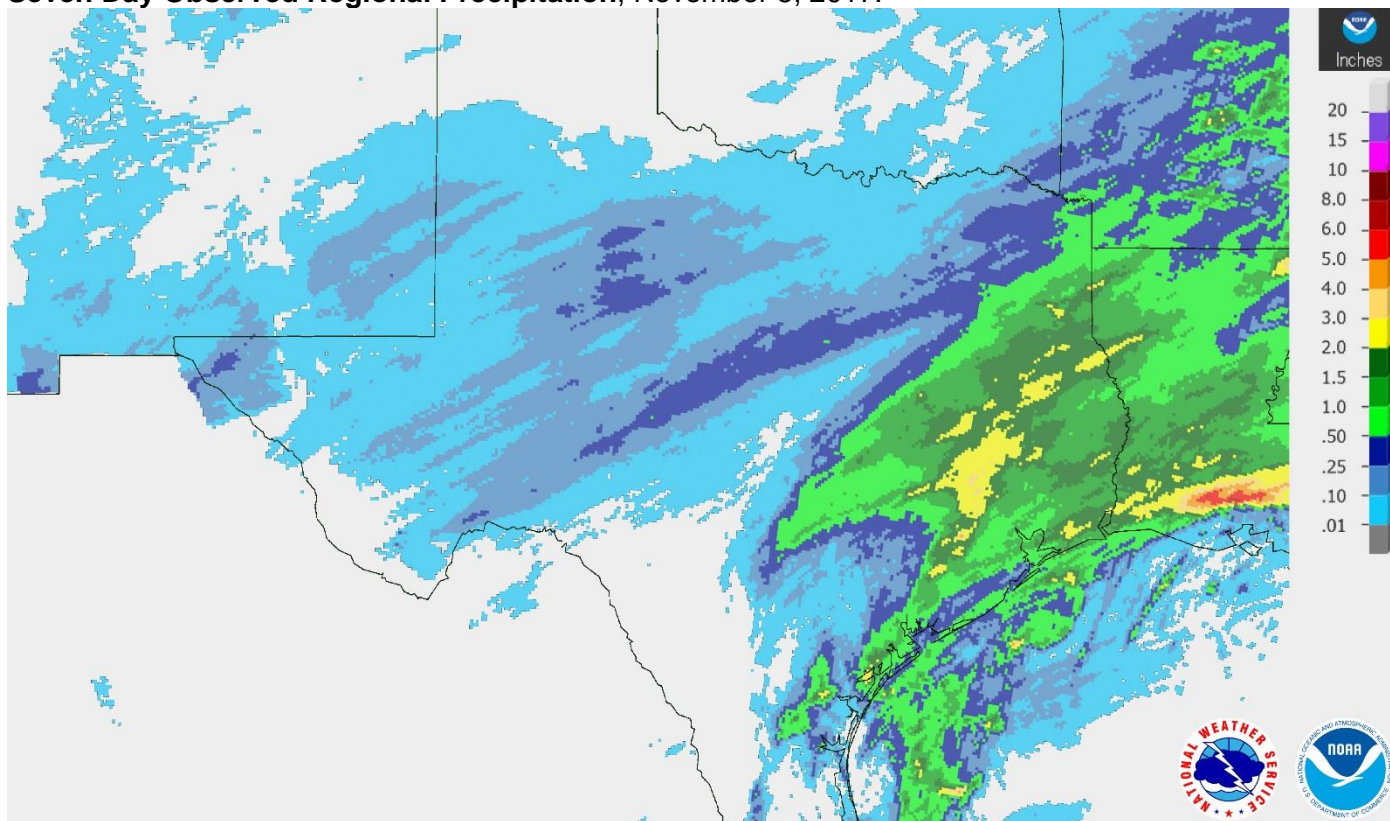
District	Topsoil Moisture Condition by District				Subsoil Moisture Condition by District				Days Suitable for Fieldwork
	Percentage of Acreage				Percentage of Acreage				
	Very Short	Short	Adequate	Surplus	Very Short	Short	Adequate	Surplus	
11	0	37	63	0	0	22	78	0	6.9
12	10	69	19	2	17	62	19	2	6.1
21	2	40	58	0	2	27	71	0	6.8
22	15	63	22	0	6	39	55	0	6.4
30	8	51	41	0	7	41	52	0	6.0
40	14	47	38	1	14	40	41	5	6.7
51	12	55	33	0	19	57	24	0	6.6
52	2	16	76	6	0	18	77	5	5.8
60	32	16	52	0	32	15	52	1	6.8
70	8	49	43	0	6	28	66	0	6.8
81	3	60	36	1	10	41	48	1	6.4
82	34	47	19	0	54	20	26	0	7.0
90	4	34	55	7	4	34	50	12	6.6
96	18	57	25	0	18	49	33	0	6.2
97	51	47	2	0	62	38	0	0	7.0
State	10	49	40	1	12	38	48	2	6.6

Texas Agricultural Districts

- 11 Northern High Plains
- 12 Southern High Plains
- 21 Northern Low Plains
- 22 Southern Low Plains
- 30 Cross Timbers
- 40 Blacklands
- 51 North East
- 52 South East
- 60 Trans-Pecos
- 70 Edwards Plateau
- 81 South Central
- 82 Coastal Bend
- 90 Upper Coast
- 96 South
- 97 Lower Valley

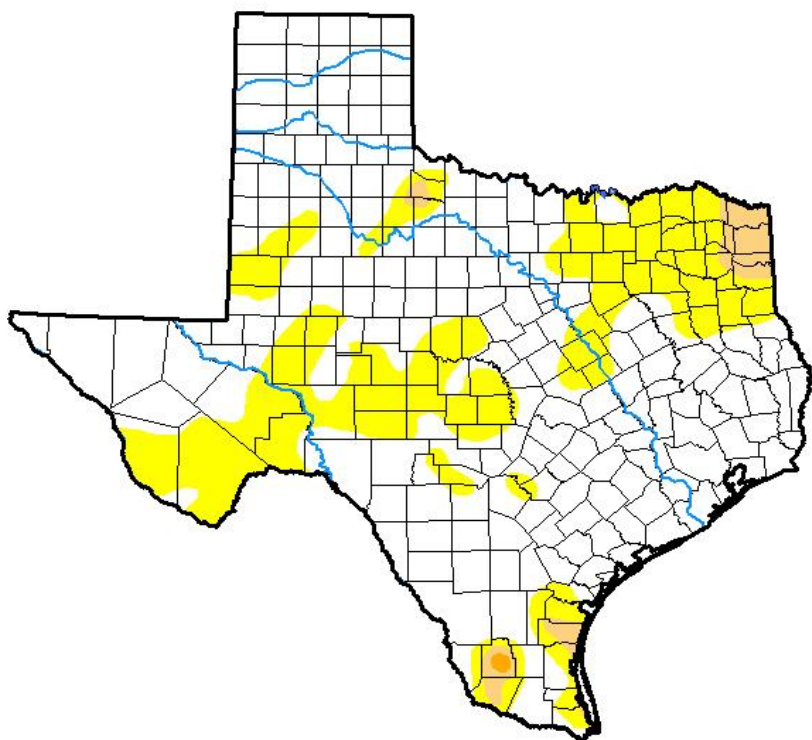


Seven Day Observed Regional Precipitation, November 5, 2017.



Source: National Weather Service, www.nws.noaa.gov

Drought Monitor, Valid October 31, 2017.



Drought Conditions (Percent Area)

	None	D0-D4	D1-D4	D2-D4	D3-D4	D4
Current	71.18	28.82	2.52	0.11	0.00	0.00
Last Week <i>10-24-2017</i>	80.89	19.11	1.74	0.00	0.00	0.00
3 Months Ago <i>08-01-2017</i>	73.48	26.52	9.90	0.73	0.00	0.00
Start of Calendar Year <i>01-03-2017</i>	81.50	18.50	6.29	1.97	0.04	0.00
Start of Water Year <i>09-26-2017</i>	70.54	29.46	4.17	0.04	0.00	0.00
One Year Ago <i>11-01-2016</i>	59.55	40.45	14.87	6.50	0.00	0.00

Intensity:

- D0 Abnormally Dry
- D1 Moderate Drought
- D2 Severe Drought
- D3 Extreme Drought
- D4 Exceptional Drought

The Drought Monitor focuses on broad-scale conditions. Local conditions may vary. See accompanying text summary for forecast statements.

Author:

David Miskus
NOAA/NWS/NCEP/CPC



Source: National Drought Mitigation Center, a partnership with USDA, U.S. Department of Commerce/NOAA, <http://droughtmonitor.unl.edu>