



Texas Crop Progress and Condition

Southern Plains Regional Field Office
Post Office Box 70 Austin, Texas 78767
(800) 626-3142 · FAX (855) 270-2725 · www.nass.usda.gov/tx

Issue: TX-CW4217

Weekly Summary for November 6 - 12

Released: November 13, 2017

Most of the state experienced cooler temperatures last week. Rainfall ranged from 0.5 to 1.5 inches in East Texas, the Blacklands, the Cross Timbers, and the Southern Plains. Most of the rest of the state recorded trace amounts of precipitation up to half an inch. There were 5.8 days suitable for fieldwork.

Small Grain: The past two weeks' precipitation and humidity improved the winter wheat conditions in the Southern Plains, the Cross Timbers, the Blacklands, North East Texas and the Edwards Plateau. Wheat seeding continued in South Texas, the Low Plains and the Cross Timbers. Oats seeding continued in the Blacklands and South Texas.

Row Crops: Cotton harvest continued in the Plains, the Cross Timbers and the Edwards Plateau. However, humidity and precipitation slowed harvest in many areas of those districts. Corn and sorghum harvest continued in the Northern High Plains.

Fruit, Vegetable, and Specialty Crops: Fall vegetables were being harvested in North East Texas. Producers in the Lower Valley and South Texas indicated their vegetables were making good progress. Pecan harvest continued to progress in South Central Texas, South Texas, the Southern Low Plains and the Edwards Plateau.

Livestock, Range and Pasture: Livestock condition remained mostly good across the state. However, use of supplemental feeding continued across the state. Pasture and range condition remained good to fair.

Crop Progress

Stage	Percent of Acreage			
	Current Week	Previous Week	Previous Year	5 Year Average
Corn				
Harvested	95	92	97	96
Cotton				
Bolls Opening	95	93	99	98
Harvested	55	44	41	53
Peanuts				
Harvested	80	60	76	85
Sorghum				
Harvested	91	84	86	87
Soybeans				
Harvested	95	92	86	86
Sunflowers				
Harvested	83	80	84	83
Winter Wheat				
Planted	89	85	88	87
Emerged	78	69	72	73
Oats				
Planted	96	94	88	89
Emerged	79	69	73	66

Crop Condition

Crop	Percent of Acreage					Index ¹	
	Excellent	Good	Fair	Poor	Very Poor	2017	2016
Corn	22	57	18	3	0	87	(NA)
Cotton	18	40	34	7	1	78	67
Peanuts	3	62	34	1	0	80	79
Sorghum	16	62	18	3	1	85	76
Soybeans	17	43	28	8	4	76	68
Wheat	6	40	40	12	2	70	68
Oats	1	23	46	19	11	55	66
Range and Pasture	3	28	44	19	6	--	--

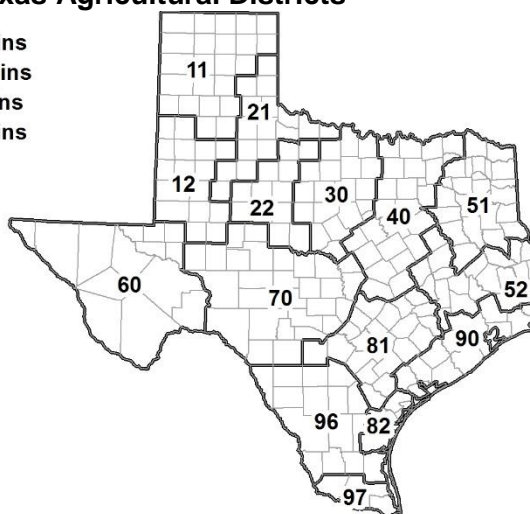
¹ The formula for the condition index is $I = (5V + 25P + 60F + 90G + 110E)/100$ where I = crop condition index and V, P, F, G, E = percentage of crop rated very poor, poor, fair, good, excellent. (NA) Not available.

Soil Moisture and Days Suitable by District

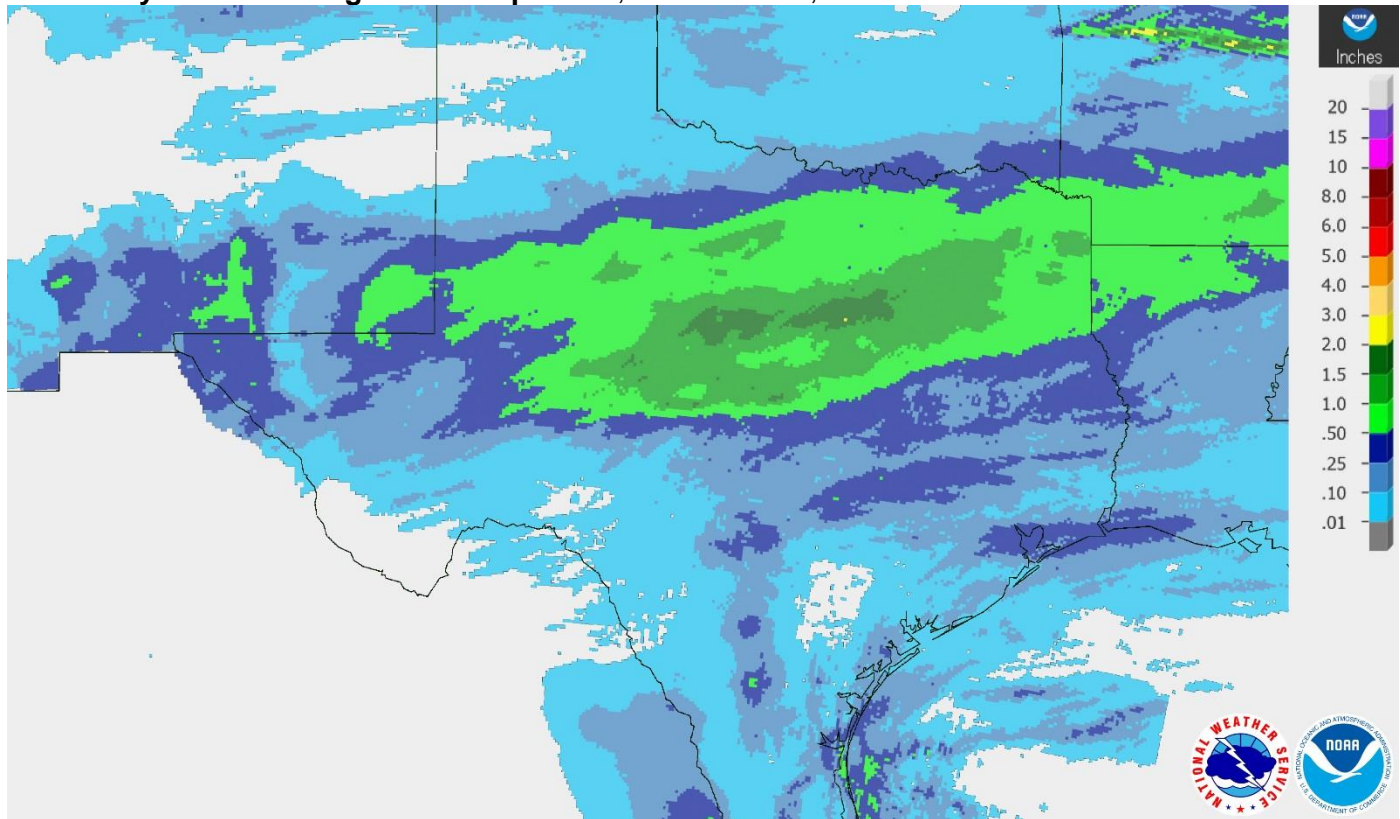
District	Topsoil Moisture Condition by District				Subsoil Moisture Condition by District				Days Suitable for Fieldwork
	Percentage of Acreage				Percentage of Acreage				
	Very Short	Short	Adequate	Surplus	Very Short	Short	Adequate	Surplus	
11	0	47	53	0	0	24	76	0	6.4
12	3	27	50	20	13	23	50	14	5.9
21	0	50	50	0	0	27	73	0	7.0
22	3	25	70	2	3	30	67	0	4.3
30	3	21	63	13	4	26	59	11	5.0
40	7	22	64	7	9	30	55	6	4.7
51	8	41	51	0	9	47	44	0	6.3
52	2	22	50	26	2	30	63	5	5.1
60	53	17	30	0	56	16	28	0	6.6
70	6	36	58	0	5	37	58	0	4.8
81	2	47	51	0	2	45	53	0	6.1
82	11	50	39	0	18	36	46	0	7.0
90	4	39	47	10	4	33	39	24	5.6
96	19	51	30	0	21	54	25	0	6.9
97	51	21	28	0	62	12	26	0	7.0
State	6	35	53	6	9	29	57	5	5.8

Texas Agricultural Districts

- 11 Northern High Plains
- 12 Southern High Plains
- 21 Northern Low Plains
- 22 Southern Low Plains
- 30 Cross Timbers
- 40 Blacklands
- 51 North East
- 52 South East
- 60 Trans-Pecos
- 70 Edwards Plateau
- 81 South Central
- 82 Coastal Bend
- 90 Upper Coast
- 96 South
- 97 Lower Valley

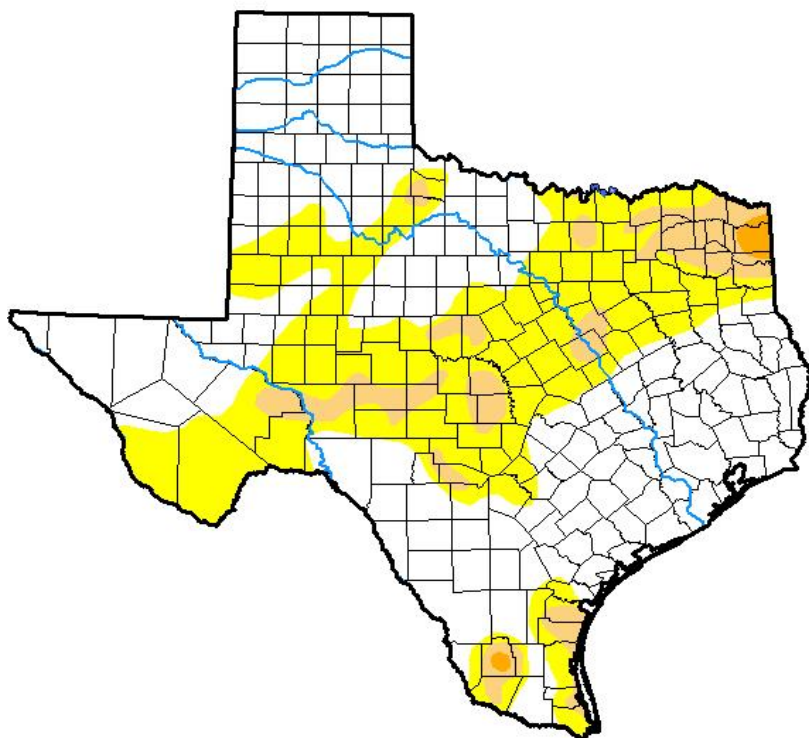


Seven Day Observed Regional Precipitation, November 12, 2017.



Source: National Weather Service, www.nws.noaa.gov

Drought Monitor, Valid November 7, 2017.



Drought Conditions (Percent Area)

	None	D0-D4	D1-D4	D2-D4	D3-D4	D4
Current	58.23	41.77	8.80	0.56	0.00	0.00
Last Week <i>10-31-2017</i>	71.18	28.82	2.52	0.11	0.00	0.00
3 Months Ago <i>08-08-2017</i>	79.97	20.03	4.29	0.00	0.00	0.00
Start of Calendar Year <i>01-03-2017</i>	81.50	18.50	6.29	1.97	0.04	0.00
Start of Water Year <i>09-26-2017</i>	70.54	29.46	4.17	0.04	0.00	0.00
One Year Ago <i>11-08-2016</i>	64.99	35.01	14.03	5.55	0.00	0.00

Intensity:

- D0 Abnormally Dry
- D1 Moderate Drought
- D2 Severe Drought
- D3 Extreme Drought
- D4 Exceptional Drought

The Drought Monitor focuses on broad-scale conditions. Local conditions may vary. See accompanying text summary for forecast statements.

Author:

David Miskus
NOAA/NWS/NCEP/CPC



Source: National Drought Mitigation Center, a partnership with USDA, U.S. Department of Commerce/NOAA, <http://droughtmonitor.unl.edu>