



# Texas Crop Progress and Condition

Southern Plains Regional Field Office  
Post Office Box 70 Austin, Texas 78767  
(800) 626-3142 · FAX (855) 270-2725 · www.nass.usda.gov/tx

**Issue: TX-CW4317 corrected      Weekly Summary for November 13-19      Released: November 20, 2017**

Average temperatures across the state were mostly warm this past week compared to the week prior. Even though high humidity was reported in some areas of the state, most of the state experienced little to no rainfall. Isolated areas in South Central Texas, the Coastal Bend, South Texas and the Lower Valley received precipitation ranging from 0.5 to 1.5 inches. There were 6.4 days suitable for fieldwork.

**Small Grain:** Wheat seeding continued in the Blacklands, the Edwards Plateau, and South Central Texas. Wheat in the High Plains, the Blacklands and the Edwards Plateau was in need of moisture. Producers in the Southern High Plains and South Texas reported a reduction in armyworms after application of chemical control. Oats were rated mostly fair to good across the state.

**Row Crops:** Sorghum harvest was ongoing in the Northern High Plains. Cotton harvest continued in the Plains, the Blacklands, North East Texas, the Trans-Pecos and the Edwards Plateau. Producers in the Low Plains, the Southern High Plains and the Edwards Plateau reported cotton harvest was slowed by the high humidity. Field work in preparation of 2018 corn planting has begun in the Blacklands.

**Fruit, Vegetable, and Specialty Crops:** Fall vegetable crops were maturing in the Lower Valley. Pecan harvest continued in North East Texas, the Edwards Plateau and South Central Texas. Western Schley pecans in the Trans-Pecos are in need of a freeze to start the harvest.

**Livestock, Range and Pasture:** Stock tank levels were decreasing in the Edwards Plateau, creating concerns for producers who have no other water source for livestock. Use of supplemental feeding continued in the Northern High Plains, the Cross Timbers, North East Texas, the Edwards Plateau, South Central Texas and the Lower Valley. Pasture and range condition remained good to fair.

### Crop Progress

Stage	Percent of Acreage			
	Current Week	Previous Week	Previous Year	5 Year Average
<b>Cotton</b>				
Harvested	67	55	46	60
<b>Peanuts</b>				
Harvested	85	80	81	90
<b>Sorghum</b>				
Harvested	95	91	90	90
<b>Sunflowers</b>				
Harvested	87	83	87	87
<b>Winter Wheat</b>				
Planted	90	89	91	90
Emerged	79	78	78	78
<b>Oats</b>				
Emerged	82	79	80	73

### Crop Condition

Crop	Percent of Acreage					Index <sup>1</sup>	
	Excellent	Good	Fair	Poor	Very Poor	2017	2016
Cotton	18	40	34	7	1	78	66
Peanuts	3	62	34	1	0	80	79
Sorghum	16	62	18	3	1	85	76
Wheat	5	36	43	13	3	67	67
Oats	2	38	47	11	2	67	65
Range and Pasture	2	26	47	20	5	--	--

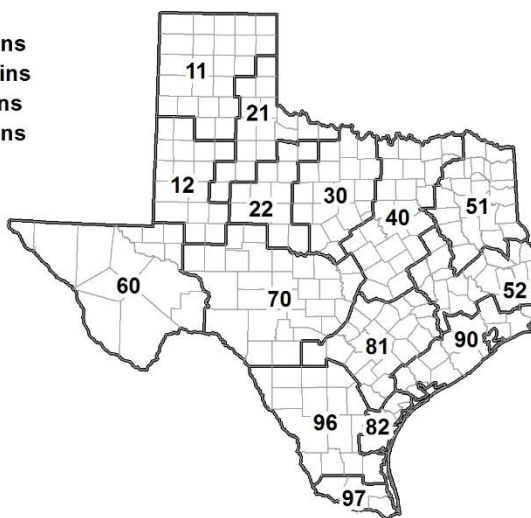
<sup>1</sup> The formula for the condition index is  $I = (5V + 25P + 60F + 90G + 110E)/100$  where I = crop condition index and V, P, F, G, E = percentage of crop rated very poor, poor, fair, good, excellent.

### Soil Moisture and Days Suitable by District

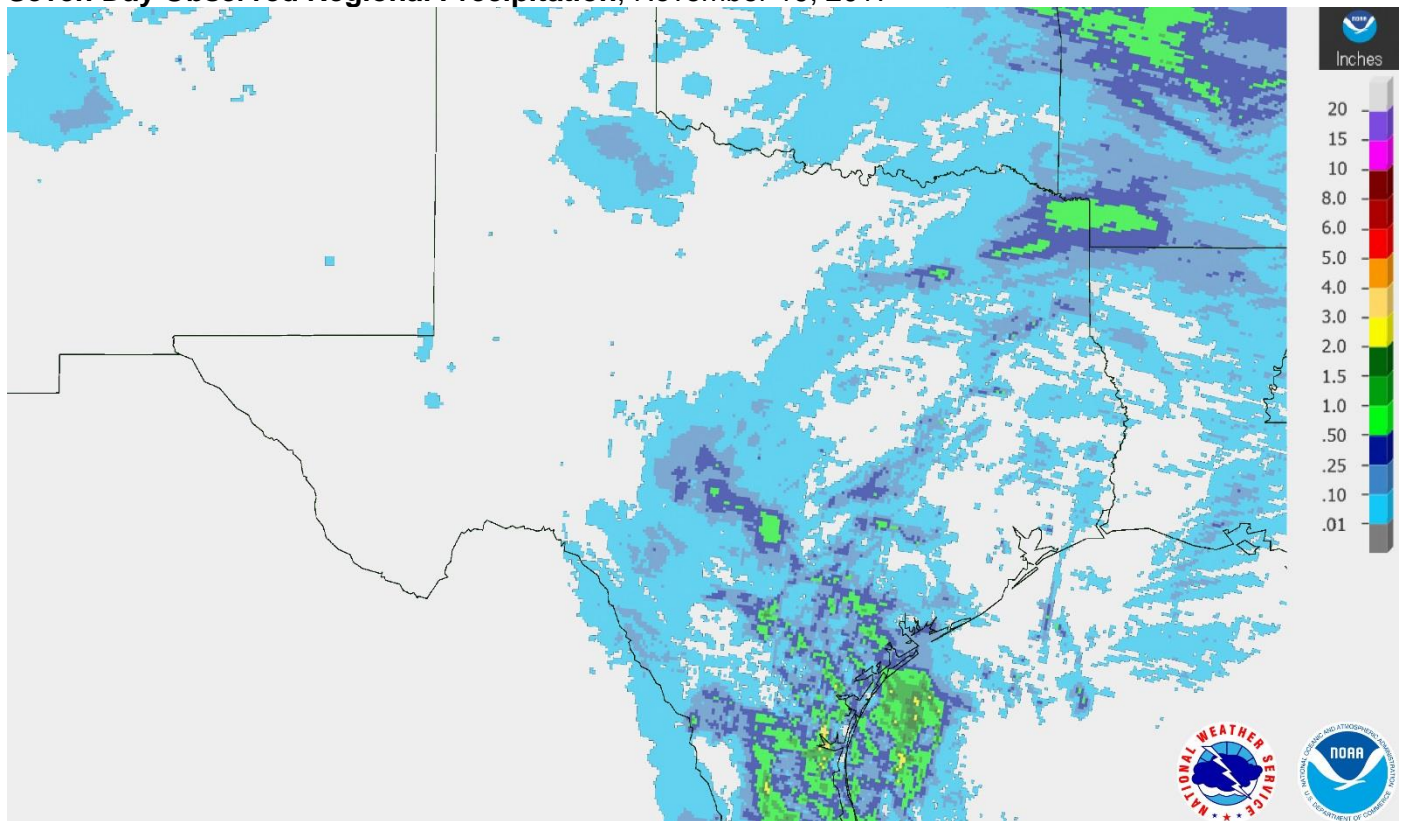
District	Topsoil Moisture Condition by District				Subsoil Moisture Condition by District				Days Suitable for Fieldwork
	Percentage of Acreage				Percentage of Acreage				
	Very Short	Short	Adequate	Surplus	Very Short	Short	Adequate	Surplus	
11	3	82	15	0	0	44	56	0	6.2
12	19	55	16	10	29	44	17	10	7.0
21	9	61	30	0	1	41	58	0	6.7
22	9	54	37	0	5	42	53	0	6.4
30	4	33	62	1	4	29	62	5	6.0
40	12	40	48	0	14	27	56	3	6.2
51	9	45	46	0	10	47	43	0	6.9
52	4	30	63	3	4	37	56	3	6.9
60	9	22	69	0	10	21	68	1	6.6
70	10	43	46	1	9	43	48	0	6.1
81	5	67	27	1	3	59	37	1	6.6
82	27	52	21	0	31	45	16	8	5.9
90	4	41	54	1	4	25	61	10	5.8
96	4	75	21	0	21	58	21	0	7.0
97	12	23	65	0	10	29	61	0	7.0
State	9	56	33	2	10	40	47	3	6.4

### Texas Agricultural Districts

- 11 Northern High Plains
- 12 Southern High Plains
- 21 Northern Low Plains
- 22 Southern Low Plains
- 30 Cross Timbers
- 40 Blacklands
- 51 North East
- 52 South East
- 60 Trans-Pecos
- 70 Edwards Plateau
- 81 South Central
- 82 Coastal Bend
- 90 Upper Coast
- 96 South
- 97 Lower Valley

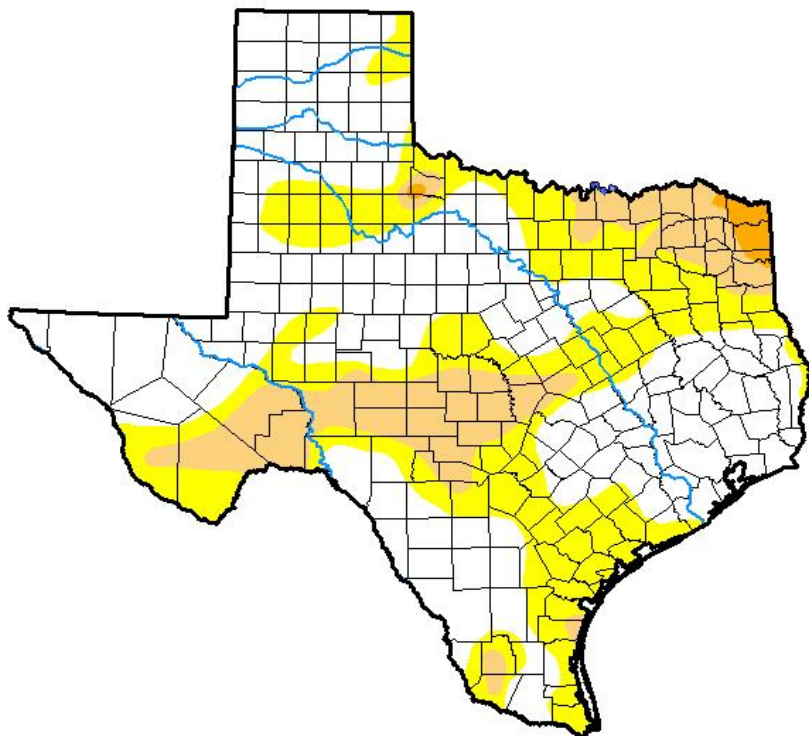


## Seven Day Observed Regional Precipitation, November 19, 2017



Source: National Weather Service, [www.nws.noaa.gov](http://www.nws.noaa.gov)

## Drought Monitor, Valid November 14, 2017



Drought Conditions (Percent Area)

	None	D0-D4	D1-D4	D2-D4	D3-D4	D4
<b>Current</b>	54.34	45.66	15.26	0.97	0.00	0.00
<b>Last Week</b> <i>11-07-2017</i>	58.23	41.77	8.80	0.56	0.00	0.00
<b>3 Months Ago</b> <i>08-15-2017</i>	89.71	10.29	1.23	0.00	0.00	0.00
<b>Start of Calendar Year</b> <i>01-03-2017</i>	81.50	18.50	6.29	1.97	0.04	0.00
<b>Start of Water Year</b> <i>09-26-2017</i>	70.54	29.46	4.17	0.04	0.00	0.00
<b>One Year Ago</b> <i>11-15-2016</i>	64.98	35.02	16.32	7.69	0.63	0.00

Intensity:

- D0 Abnormally Dry
- D1 Moderate Drought
- D2 Severe Drought
- D3 Extreme Drought
- D4 Exceptional Drought

*The Drought Monitor focuses on broad-scale conditions. Local conditions may vary. See accompanying text summary for forecast statements.*

Author:

Richard Tinker  
CPC/NOAA/NWS/NCEP



Source: National Drought Mitigation Center, a partnership with USDA, U.S. Department of Commerce/NOAA, <http://droughtmonitor.unl.edu>