



Texas Crop Progress and Condition

Southern Plains Regional Field Office
Post Office Box 70 Austin, Texas 78767
(800) 626-3142 · FAX (855) 270-2725 · www.nass.usda.gov/tx

Issue: TX-CW0318

Weekly Summary for March 5 - 11

Released: March 12, 2018

Areas of the Upper Coast, Coastal Bend, South and East Texas received between 0.1 to 1.5 inches of rainfall, with isolated areas in East Texas and the Upper Coast getting upwards of 2.0 inches. The remainder of the state received marginal to no measurable rain.

Small Grains: Lack of rain continued to impede optimal growing conditions for small grain crops across the Plains. Meanwhile conditions in the Blacklands and South Texas continued to improve.

Row Crops: Cotton planting was just underway in areas of the Lower Valley and South Texas. Corn and sorghum planting progressed in South Texas, the Upper Coast, and the Coastal Bend. Weather conditions delayed planting some areas of the Blacklands and East Texas.

Fruit, Vegetable and Specialty Crops: Onions, carrots and other vegetables have progressed well in areas of the Southern Low Plains, Lower Valley, and South Texas. Wet conditions in areas of South East Texas have delayed vegetable planting.

Livestock, Range and Pasture: Livestock remained in mostly good condition, but supplemental feeding continued in many areas of the state. Range and pasture conditions continued to improve in areas that have received rainfall. Wild hogs were active in areas of the Blacklands and North East. Meanwhile wild fire affected some areas of the Cross Timbers.

Crop Progress

Stage	Percent of Acreage			
	Current Week	Previous Week	Previous Year	5 Year Average
Corn				
Planted	26	11	24	18
Sorghum				
Planted	18	17	18	11

Crop Condition

Crop	Percent of Acreage					Index ¹	
	Excellent	Good	Fair	Poor	Very Poor	2018	2017
Wheat	1	12	34	23	30	40	64
Oats	2	30	30	27	11	54	66
Range and Pasture	5	24	37	25	9	--	--

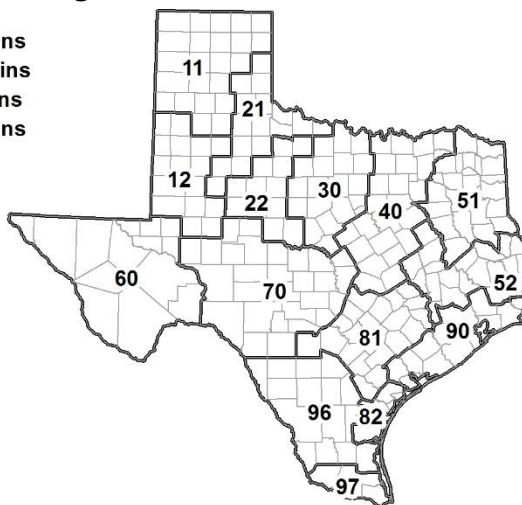
¹ The formula for the condition index is $I = (5V + 25P + 60F + 90G + 110E)/100$ where I = crop condition index and V, P, F, G, E = percentage of crop rated very poor, poor, fair, good, excellent.

Soil Moisture and Days Suitable by District

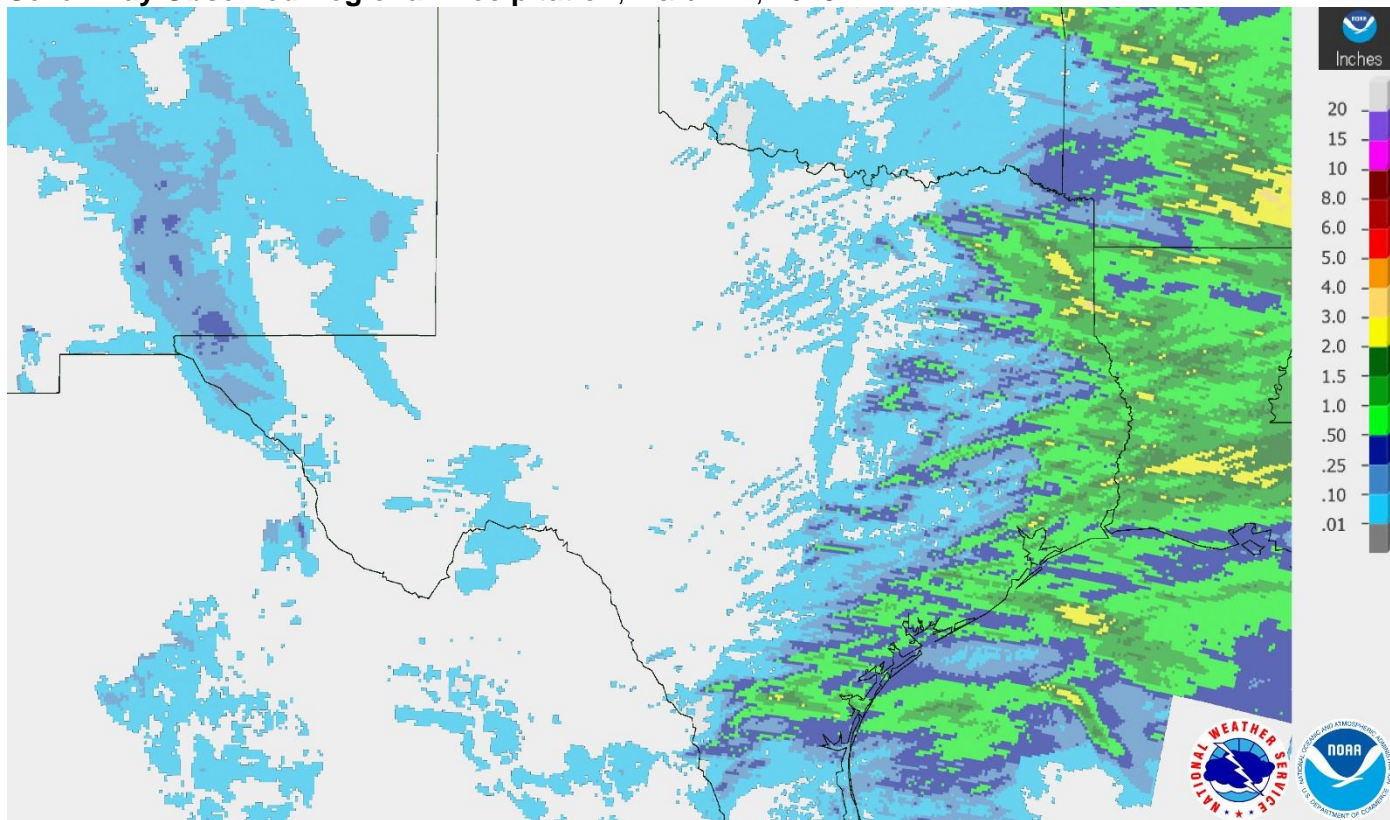
District	Topsoil Moisture Condition by District				Subsoil Moisture Condition by District				Days Suitable for Fieldwork
	Percentage of Acreage				Percentage of Acreage				
	Very Short	Short	Adequate	Surplus	Very Short	Short	Adequate	Surplus	
11	95	5	0	0	57	26	17	0	6.9
12	50	50	0	0	64	34	2	0	6.8
21	51	32	17	0	50	36	14	0	6.2
22	46	51	3	0	24	74	2	0	6.7
30	5	14	66	15	4	24	70	2	6.1
40	2	14	73	11	0	14	66	20	4.3
51	0	3	70	27	0	4	73	23	6.6
52	0	7	70	23	0	8	71	21	6.2
60	100	0	0	0	70	30	0	0	6.0
70	12	30	57	1	12	30	57	1	7.0
81	0	35	61	4	0	34	66	0	6.2
82	13	31	42	14	14	35	37	14	6.8
90	1	9	70	20	1	7	76	16	4.9
96	2	29	69	0	3	31	66	0	4.8
97	4	38	58	0	0	23	77	0	7.0
State	38	25	32	5	30	29	36	5	6.2

Texas Agricultural Districts

- 11 Northern High Plains
- 12 Southern High Plains
- 21 Northern Low Plains
- 22 Southern Low Plains
- 30 Cross Timbers
- 40 Blacklands
- 51 North East
- 52 South East
- 60 Trans-Pecos
- 70 Edwards Plateau
- 81 South Central
- 82 Coastal Bend
- 90 Upper Coast
- 96 South
- 97 Lower Valley

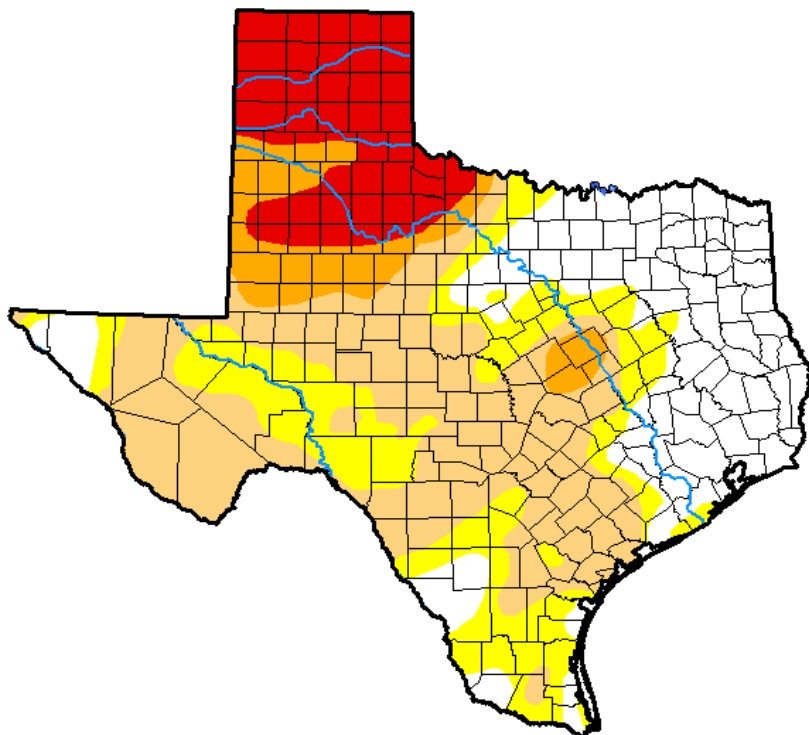


Seven Day Observed Regional Precipitation, March 11, 2018.



Source: National Weather Service, www.nws.noaa.gov.

Drought Monitor, Valid March 6, 2018.



Drought Conditions (Percent Area)

	None	D0-D4	D1-D4	D2-D4	D3-D4	D4
Current	25.76	74.24	54.22	21.74	14.16	0.00
Last Week <i>02-27-2018</i>	22.75	77.25	55.19	22.04	11.47	0.00
3 Months Ago <i>12-05-2017</i>	27.60	72.40	37.06	10.82	0.00	0.00
Start of Calendar Year <i>01-02-2018</i>	33.37	66.63	33.56	5.94	0.11	0.00
Start of Water Year <i>09-26-2017</i>	70.54	29.46	4.17	0.04	0.00	0.00
One Year Ago <i>03-07-2017</i>	70.92	29.08	4.65	0.93	0.00	0.00

Intensity:

- D0 Abnormally Dry
- D1 Moderate Drought
- D2 Severe Drought
- D3 Extreme Drought
- D4 Exceptional Drought

The Drought Monitor focuses on broad-scale conditions. Local conditions may vary. See accompanying text summary for forecast statements.

Author:

Richard Tinker
CPC/NOAA/NWS/NCEP



Source: National Drought Mitigation Center, a partnership with USDA, U.S. Department of Commerce/NOAA, <http://droughtmonitor.unl.edu>.