



Texas Crop Progress and Condition

Southern Plains Regional Field Office
Post Office Box 70 Austin, Texas 78767
(800) 626-3142 · FAX (855) 270-2725 · www.nass.usda.gov/tx

Issue: TX-CW0418

Weekly Summary for March 12 - 18

Released: March 19, 2018

Light scattered showers were observed across the state. Precipitation in areas of the Cross Timbers, Blacklands, and East Texas ranged from 0.1 to 1.5 inches, with isolated areas in the Blacklands reaching upwards of 2.0 inches.

Small Grains: Recent rains have aided wheat and oat conditions in areas of the Cross Timbers and the Blacklands. Meanwhile, wheat producers continue irrigating in areas of the High Plains due to little to no precipitation.

Row Crops: Field work in preparation for cotton and sorghum planting continued in areas of the Edwards Plateau. Early planted corn had just begun to emerge in the Upper Coast and South Central Texas. While cotton, corn, and sorghum planting was underway in areas of the Upper Coast.

Fruit, Vegetable and Specialty Crops: Vegetable producers have begun planting in areas of the North East Texas. Weather condition have favored development of vegetables in South Texas. Harvest continued for sugarcane, citrus, and vegetables in areas of the Lower Valley.

Livestock, Range and Pasture: Livestock were mostly in good condition as the need to provide supplemental feeding decreased, but livestock producers in areas of the Northern Low Plains and South Texas continued to supplement pastures. Pasture conditions are mostly fair to good throughout the state. Wild hogs were active in areas of the Blacklands and North East Texas. Meanwhile stock tank water levels dropped in areas of the Blacklands.

Crop Progress

Stage	Percent of Acreage			
	Current Week	Previous Week	Previous Year	5 Year Average
Corn				
Planted	35	26	30	26
Sorghum				
Planted	25	18	25	18

Crop Condition

Crop	Percent of Acreage					Index ¹	
	Excellent	Good	Fair	Poor	Very Poor	2018	2017
Wheat	1	9	30	24	36	35	64
Oats	1	27	39	21	12	55	66
Range and Pasture	3	26	39	25	7	--	--

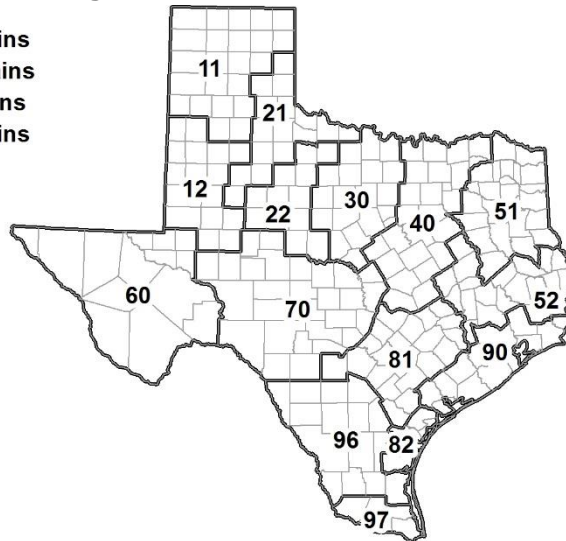
¹ The formula for the condition index is $I = (5V + 25P + 60F + 90G + 110E)/100$ where I = crop condition index and V, P, F, G, E = percentage of crop rated very poor, poor, fair, good, excellent.

Soil Moisture and Days Suitable by District

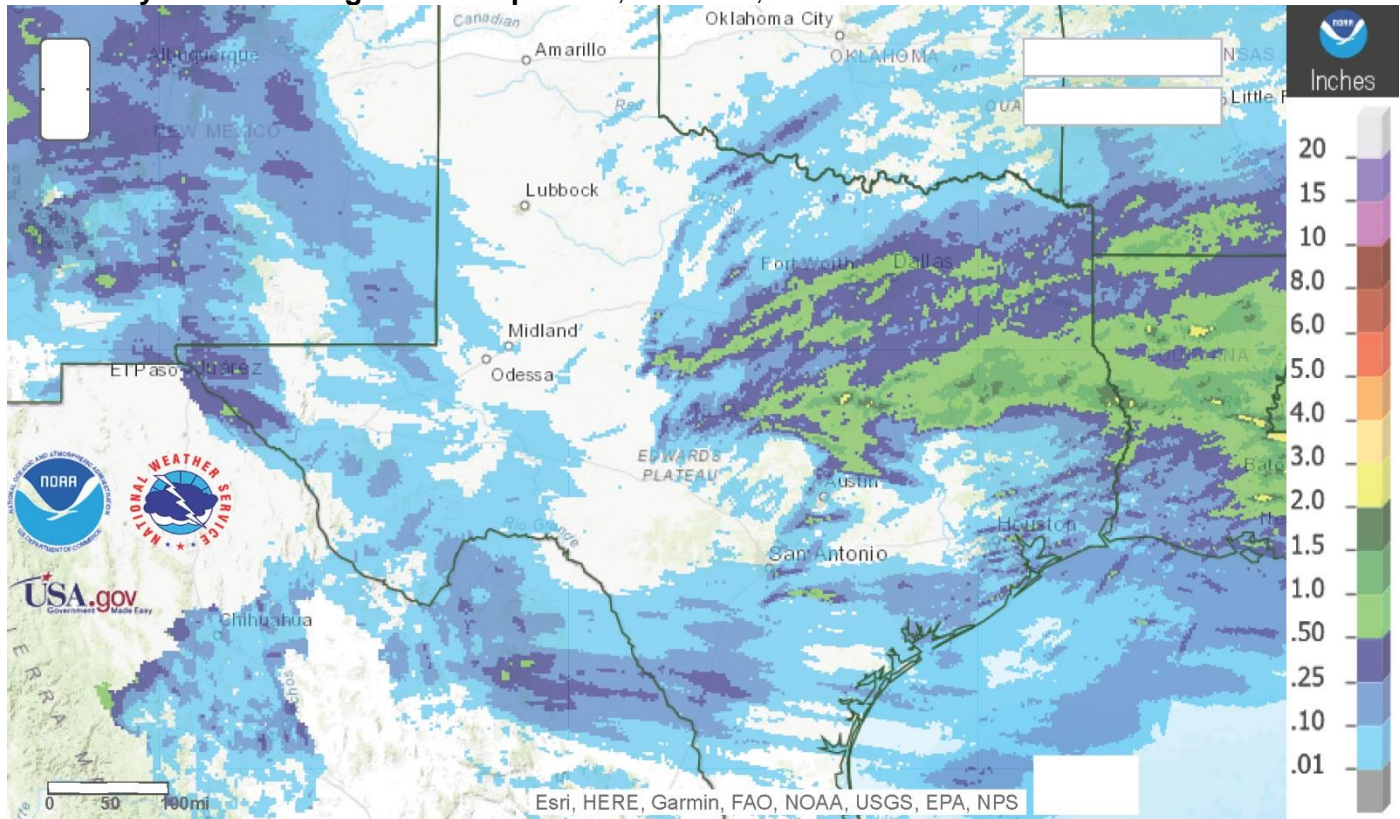
District	Topsoil Moisture Condition by District				Subsoil Moisture Condition by District				Days Suitable for Fieldwork
	Percentage of Acreage				Percentage of Acreage				
	Very Short	Short	Adequate	Surplus	Very Short	Short	Adequate	Surplus	
11	86	13	1	0	31	41	28	0	6.9
12	59	41	0	0	71	28	1	0	6.8
21	57	36	7	0	51	40	9	0	6.4
22	48	41	11	0	33	50	17	0	6.6
30	7	29	64	0	5	29	66	0	6.2
40	0	20	72	8	2	12	69	17	6.1
51	0	8	72	20	0	10	70	20	6.3
52	0	0	66	34	0	1	79	20	6.4
60	73	1	26	0	52	22	26	0	6.6
70	18	35	46	1	16	33	50	1	6.2
81	0	44	53	3	0	38	60	2	6.6
82	12	29	51	8	12	35	45	8	7.0
90	3	12	71	14	3	12	82	3	6.9
96	4	43	53	0	17	33	50	0	6.8
97	56	38	6	0	0	83	17	0	7.0
State	39	27	30	4	27	32	37	4	6.6

Texas Agricultural Districts

- 11 Northern High Plains
- 12 Southern High Plains
- 21 Northern Low Plains
- 22 Southern Low Plains
- 30 Cross Timbers
- 40 Blacklands
- 51 North East
- 52 South East
- 60 Trans-Pecos
- 70 Edwards Plateau
- 81 South Central
- 82 Coastal Bend
- 90 Upper Coast
- 96 South
- 97 Lower Valley

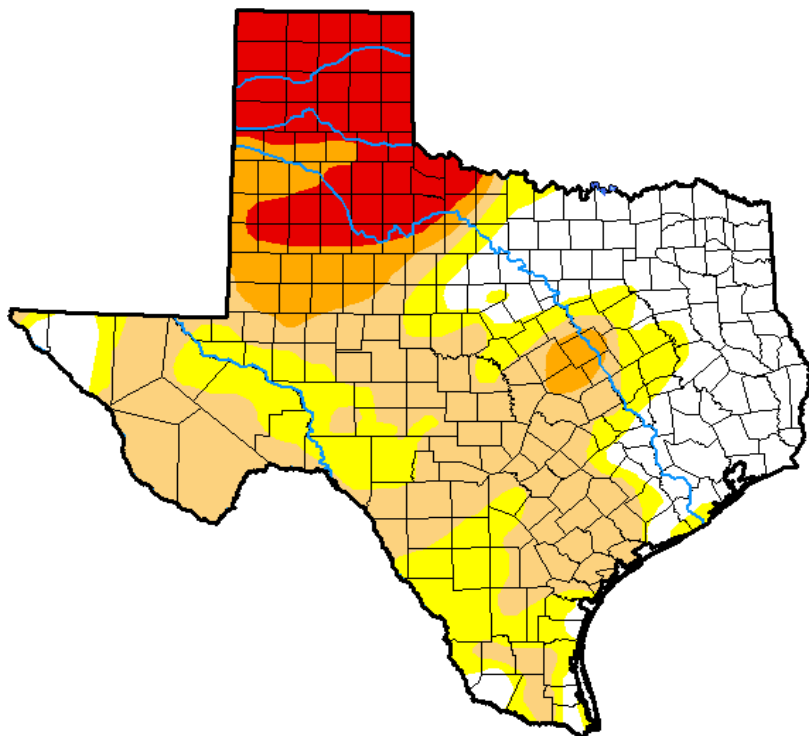


Seven Day Observed Regional Precipitation, March 18, 2018.



Source: National Weather Service, www.nws.noaa.gov.

Drought Monitor, Valid March 13, 2018.



Drought Conditions (Percent Area)

	None	D0-D4	D1-D4	D2-D4	D3-D4	D4
Current	24.83	75.17	54.19	22.29	14.19	0.00
Last Week <i>03-06-2018</i>	25.76	74.24	54.22	21.74	14.16	0.00
3 Months Ago <i>12-12-2017</i>	28.56	71.44	26.17	11.74	0.76	0.00
Start of Calendar Year <i>01-02-2018</i>	33.37	66.63	33.56	5.94	0.11	0.00
Start of Water Year <i>09-26-2017</i>	70.54	29.46	4.17	0.04	0.00	0.00
One Year Ago <i>03-14-2017</i>	65.12	34.88	4.52	0.93	0.00	0.00

Intensity:

- D0 Abnormally Dry
- D1 Moderate Drought
- D2 Severe Drought
- D3 Extreme Drought
- D4 Exceptional Drought

The Drought Monitor focuses on broad-scale conditions. Local conditions may vary. See accompanying text summary for forecast statements.

Author:

Richard Tinker
CPC/NOAA/NWS/NCEP

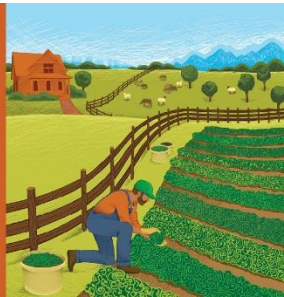


Source: National Drought Mitigation Center, a partnership with USDA, U.S. Department of Commerce/NOAA, <http://droughtmonitor.unl.edu>.

2017 CENSUS OF AGRICULTURE
YOUR VOICE. YOUR FUTURE. YOUR OPPORTUNITY.



United States Department of Agriculture
National Agricultural Statistics Service



**There's Still Time to Be Counted.
Respond Today!**

Respond Online. www.agcounts.usda.gov

*For assistance completing the census,
call toll-free (888) 424-7828.*

www.agcensus.usda.gov