



# Texas Crop Progress and Condition

Southern Plains Regional Field Office  
Post Office Box 70 Austin, Texas 78767  
(800) 626-3142 · FAX (855) 270-2725 · www.nass.usda.gov/tx

**Issue: TX-CW0718**

**Weekly Summary for April 2 - 8**

**Released: April 9, 2018**

A cold front hit Texas late in the week, bringing freezing temperatures to areas in the Northern and Southern Plains. The western part of the state had a very dry week, while the Blacklands, East Texas, the Upper Coast, the Coastal Bend, the Lower Valley and parts of South Central Texas received between 0.5 to 2 inches of rain. Hail and strong winds damaged several crops in the Blacklands, including wheat, oats, corn and sorghum. There were 6.1 days suitable for fieldwork.

**Small Grains:** Many operators grazed their dry land wheat fields in the Plains, while those with irrigation were watering their fields. Cold temperatures late in the week caused more concerns with small grains producers. Headed wheat in the Southern Low Plains showed signs of water stress. Wheat was improving in the Blacklands and East Texas and was turning color in South Texas. Wheat and oats were still struggling in the Edwards Plateau.

**Row Crops:** Cotton planting continued in South Texas, the Upper Coast, South Central Texas, and the Blacklands. Corn emerged in East Texas and the Edwards Plateau. Operators were irrigating corn in the Lower Valley. Planting of sorghum was in full swing in South Texas, while rice planting continued in the Upper Coast.

**Fruit, Vegetable and Specialty Crops:** Cabbage and spinach were being harvested in South Texas. Harvest of sugarcane, citrus and vegetables continued in the Lower Valley. Pecans were breaking bud in South Central Texas.

**Livestock, Range and Pasture:** Livestock condition was rated mostly fair to good. Many producers were providing supplemental feed to their livestock. Pasture and range condition remained fair to good.

## Crop Progress

Stage	Percent of Acreage			
	Current Week	Previous Week	Previous Year	5 Year Average
<b>Corn</b>				
Planted	58	55	59	51
Emerged	40	26	31	29
<b>Cotton</b>				
Planted	12	11	10	8
<b>Rice</b>				
Planted	65	61	51	54
Emerged	44	19	31	26
<b>Sorghum</b>				
Planted	55	42	52	40
<b>Winter Wheat</b>				
Headed	17	11	39	19
<b>Oats</b>				
Headed	45	26	34	23

### Crop Condition

Crop	Percent of Acreage					Index <sup>1</sup>	
	Excellent	Good	Fair	Poor	Very Poor	2018	2017
Wheat	2	12	25	30	31	37	68
Oats	7	24	42	17	10	59	64
Range and Pasture	6	30	38	18	8	--	--

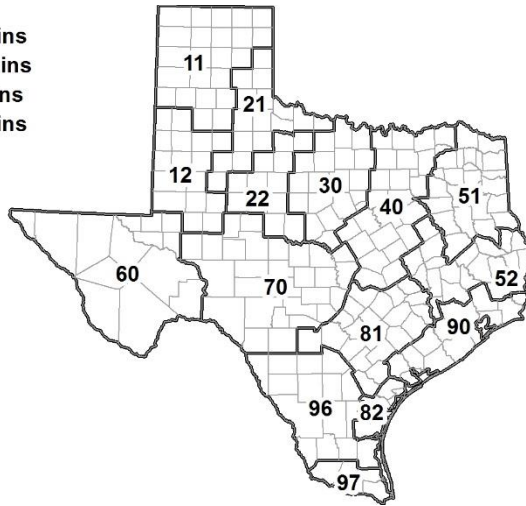
<sup>1</sup> The formula for the condition index is  $I = (5V + 25P + 60F + 90G + 110E)/100$  where I = crop condition index and V, P, F, G, E = percentage of crop rated very poor, poor, fair, good, excellent.

### Soil Moisture and Days Suitable by District

District	Topsoil Moisture Condition by District				Subsoil Moisture Condition by District				Days Suitable for Fieldwork
	Percentage of Acreage				Percentage of Acreage				
	Very Short	Short	Adequate	Surplus	Very Short	Short	Adequate	Surplus	
11	77	21	2	0	64	31	5	0	6.5
12	57	43	0	0	71	27	2	0	6.8
21	49	35	16	0	51	37	12	0	6.8
22	40	24	31	5	35	34	31	0	6.5
30	3	27	66	4	4	18	75	3	5.8
40	1	10	81	8	2	13	77	8	4.6
51	0	4	88	8	0	7	84	9	6.2
52	0	1	69	30	0	1	60	39	4.4
60	47	3	50	0	38	11	51	0	6.6
70	16	40	44	0	18	17	63	2	6.9
81	1	10	80	9	0	17	77	6	5.7
82	0	0	100	0	0	60	40	0	6.0
90	0	21	75	4	2	8	86	4	3.8
96	14	29	57	0	2	37	61	0	6.5
97	59	41	0	0	0	93	7	0	7.0
State	36	24	37	3	33	27	37	3	6.1

### Texas Agricultural Districts

- 11 Northern High Plains
- 12 Southern High Plains
- 21 Northern Low Plains
- 22 Southern Low Plains
- 30 Cross Timbers
- 40 Blacklands
- 51 North East
- 52 South East
- 60 Trans-Pecos
- 70 Edwards Plateau
- 81 South Central
- 82 Coastal Bend
- 90 Upper Coast
- 96 South
- 97 Lower Valley



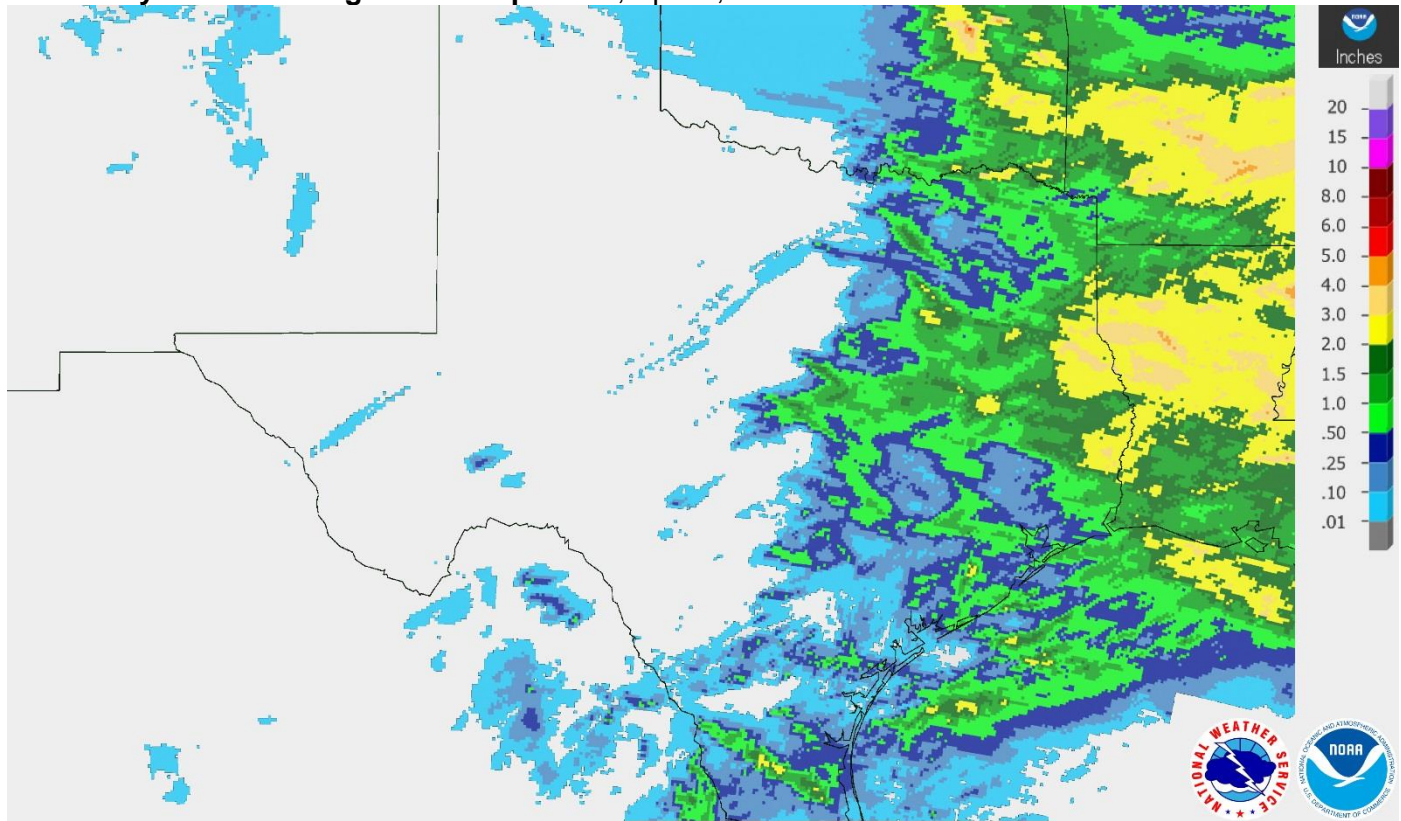
**Last Chance to Be Counted.  
Respond Today!**

Respond Online. [www.agcounts.usda.gov](http://www.agcounts.usda.gov)

For assistance completing the census,  
call toll-free (888) 424-7828.

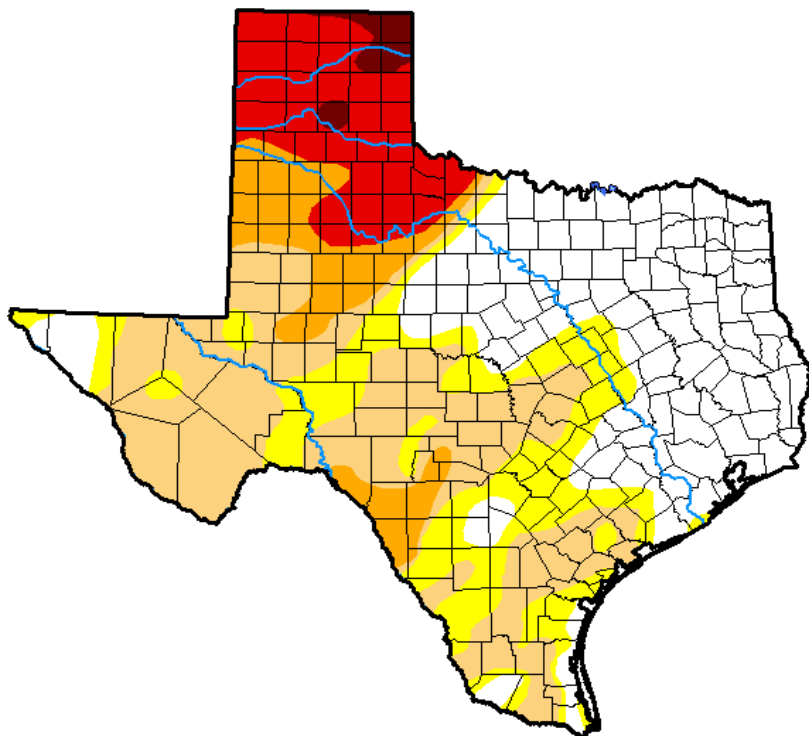
[www.agcensus.usda.gov](http://www.agcensus.usda.gov)

**Seven Day Observed Regional Precipitation, April 8, 2018.**



Source: National Weather Service, [www.nws.noaa.gov](http://www.nws.noaa.gov)

**Drought Monitor, Valid April 3, 2018.**



*Drought Conditions (Percent Area)*

	None	D0-D4	D1-D4	D2-D4	D3-D4	D4
<b>Current</b>	33.29	66.71	49.43	21.57	13.21	1.47
<b>Last Week</b> <i>03-27-2018</i>	26.19	73.81	64.23	28.30	15.08	1.21
<b>3 Months Ago</b> <i>01-02-2018</i>	33.37	66.63	33.56	5.94	0.11	0.00
<b>Start of Calendar Year</b> <i>01-02-2018</i>	33.37	66.63	33.56	5.94	0.11	0.00
<b>Start of Water Year</b> <i>09-26-2017</i>	70.54	29.46	4.17	0.04	0.00	0.00
<b>One Year Ago</b> <i>04-04-2017</i>	82.49	17.51	2.91	0.01	0.00	0.00

Intensity:

- D0 Abnormally Dry
- D1 Moderate Drought
- D2 Severe Drought
- D3 Extreme Drought
- D4 Exceptional Drought

*The Drought Monitor focuses on broad-scale conditions. Local conditions may vary. See accompanying text summary for forecast statements.*

Author:

David Miskus  
NOAA/NWS/NCEP/CPC



Source: National Drought Mitigation Center, a partnership with USDA, U.S. Department of Commerce/NOAA, <http://droughtmonitor.unl.edu>