



# Texas Crop Progress and Condition

Southern Plains Regional Field Office  
Post Office Box 70 Austin, Texas 78767  
(800) 626-3142 · FAX (855) 270-2725 · [www.nass.usda.gov/tx](http://www.nass.usda.gov/tx)

**Issue: TX-CW0818**

**Weekly Summary for April 9 - 15**

**Released: April 16, 2018**

Weather was mostly cool and windy throughout Texas. The Northern Plains and some other areas in the state experienced freezing temperatures. East Texas, the Upper Coast, the Coastal Bend, South Central Texas and areas of the Blacklands received between 0.5 to 2.0 inches of rain. The rest of the state remained very dry, intensifying the drought in the Northern Plains and the Southern Low Plains up to the point of reaching exceptional drought levels according to the US Drought Monitor. There were 6.2 days suitable for fieldwork.

**Small Grains:** Wheat irrigation remained active in the Northern High Plains, helping improve crop condition. Wheat and oats were heading out in the Low Plains, the Cross Timbers and the Blacklands. Freezing temperatures caused concerns for producers in the High and Low Plains as small grain crops were susceptible to freeze damage.

**Row Crops:** Cotton planting started in the Blacklands and continued in South East Texas, the Trans-Pecos, the Upper Coast and South Texas. Thrips were seen in cotton fields in the Upper Coast. Corn and sorghum continued to make good progress in the Blacklands, South Central Texas, the Upper Coast and the Lower Valley. Corn fields were being irrigated in South Texas. Early planted rice emerged in the Upper Coast while planting continued.

**Fruit, Vegetable and Specialty Crops:** Strawberry growers were affected by hail in South Texas. Spinach harvest continued in South Texas, while harvest of sugarcane, citrus and vegetables continued in the Lower Valley.

**Livestock, Range and Pasture:** Livestock condition continued to be rated mostly fair to good. Supplemental feed decreased in areas where rainfall was received in the past two weeks. Lambing and kidding season was in full swing in the Edwards Plateau, however, cool mornings paired with warm afternoon temperatures caused some respiratory issues with young lambs and goats. Pasture and range condition remained fair to good. Wildfires were reported in areas of the Edwards Plateau, while the rest of the western and northern parts of the state remained under fire weather watch.

### Crop Progress

Stage	Percent of Acreage			
	Current Week	Previous Week	Previous Year	5 Year Average
<b>Corn</b>				
Planted	60	58	60	54
Emerged	43	40	53	42
<b>Cotton</b>				
Planted	13	12	11	10
<b>Rice</b>				
Planted	70	65	63	69
Emerged	55	44	46	45
<b>Sorghum</b>				
Planted	64	55	57	51
<b>Soybeans</b>				
Planted	12	N/A	7	16
<b>Winter Wheat</b>				
Headed	40	17	49	32
<b>Oats</b>				
Headed	66	45	56	40

N/A Not available.

### Crop Condition

Crop	Percent of Acreage					Index <sup>1</sup>	
	Excellent	Good	Fair	Poor	Very Poor	2018	2017
Wheat	2	11	24	33	30	36	68
Oats	6	20	46	18	10	57	64
Range and Pasture	4	32	40	17	7	--	--

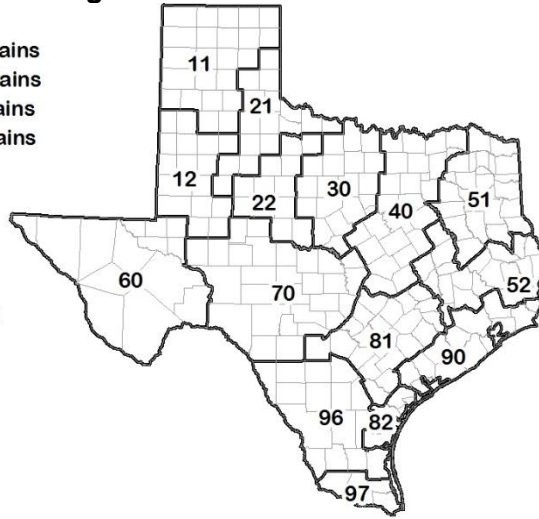
<sup>1</sup> The formula for the condition index is  $I = (5V + 25P + 60F + 90G + 110E)/100$  where I = crop condition index and V, P, F, G, E = percentage of crop rated very poor, poor, fair, good, excellent.

### Soil Moisture and Days Suitable by District

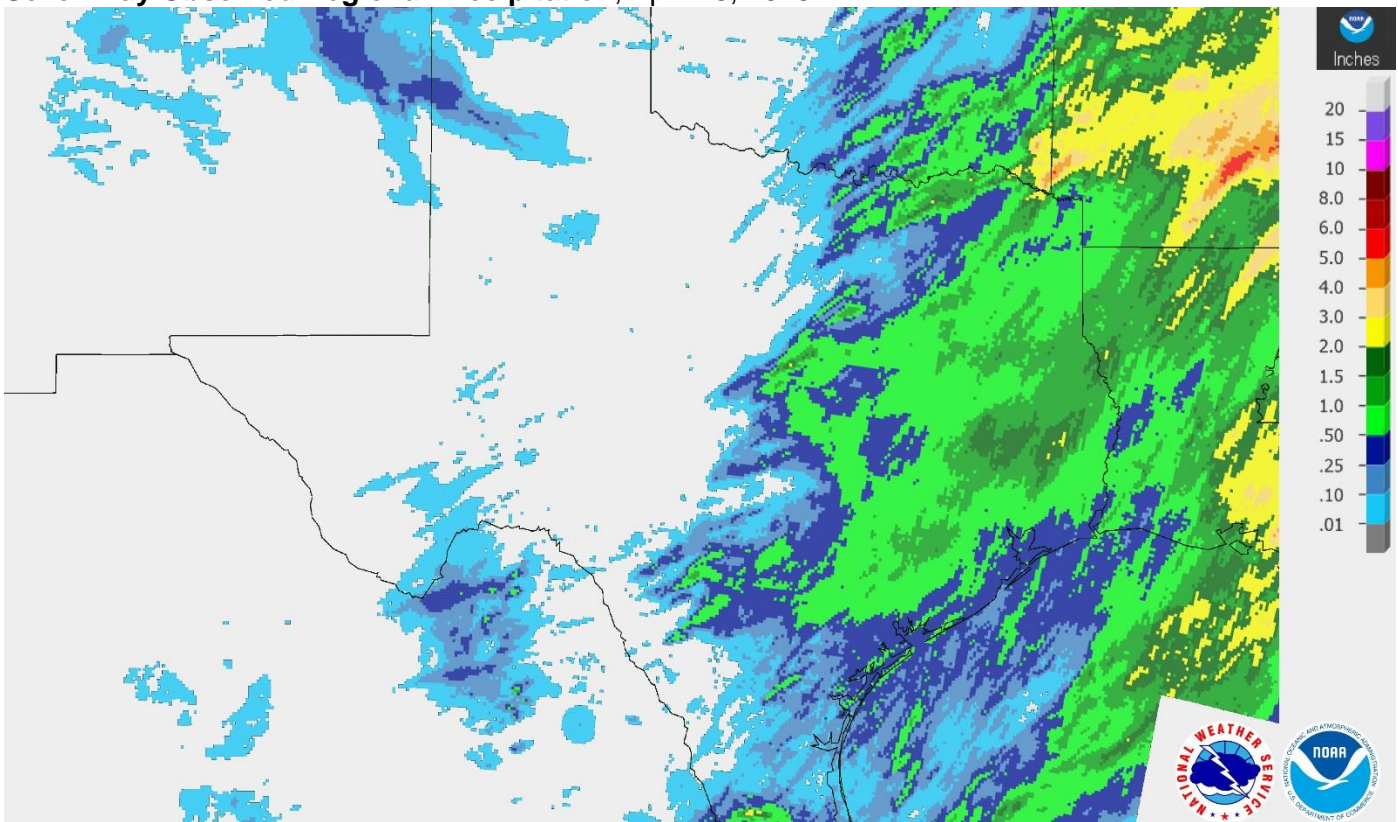
District	Topsoil Moisture Condition by District				Subsoil Moisture Condition by District				Days Suitable for Fieldwork
	Percentage of Acreage				Percentage of Acreage				
	Very Short	Short	Adequate	Surplus	Very Short	Short	Adequate	Surplus	
11	81	19	0	0	42	46	12	0	6.4
12	67	33	0	0	73	26	1	0	6.6
21	59	32	9	0	46	42	12	0	5.9
22	41	38	21	0	30	45	25	0	6.1
30	6	40	52	2	6	27	65	2	6.0
40	3	13	81	3	4	16	78	2	5.3
51	0	6	85	9	0	6	81	13	6.3
52	0	2	72	26	1	5	70	24	5.4
60	48	2	50	0	38	11	51	0	6.6
70	20	56	24	0	20	35	45	0	6.8
81	2	25	65	8	0	36	60	4	6.1
82	0	56	42	2	0	52	47	1	6.0
90	1	16	77	6	0	11	79	10	6.0
96	15	42	43	0	17	33	50	0	6.5
97	36	57	7	0	0	93	7	0	7.0
State	39	27	32	2	29	33	36	2	6.2

## Texas Agricultural Districts

- 11 Northern High Plains
- 12 Southern High Plains
- 21 Northern Low Plains
- 22 Southern Low Plains
- 30 Cross Timbers
- 40 Blacklands
- 51 North East
- 52 South East
- 60 Trans-Pecos
- 70 Edwards Plateau
- 81 South Central
- 82 Coaster Bend
- 90 Upper Coast
- 96 South
- 97 Lower Valley

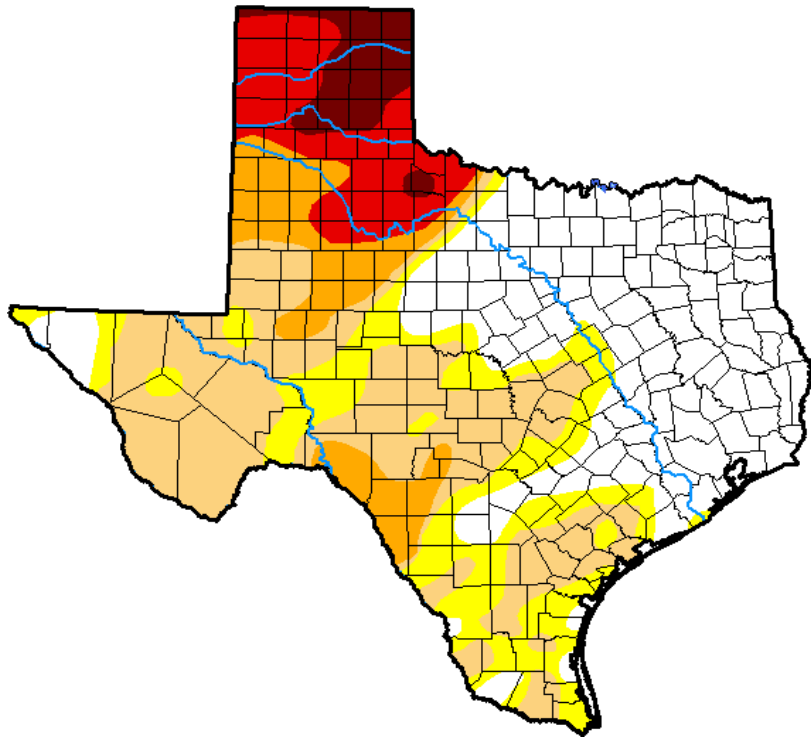


## Seven Day Observed Regional Precipitation, April 15, 2018.



Source: National Weather Service, [www.nws.noaa.gov](http://www.nws.noaa.gov).

**Drought Monitor, Valid April 10, 2018.**



*Drought Conditions (Percent Area)*

	None	D0-D4	D1-D4	D2-D4	D3-D4	D4
<b>Current</b>	34.90	65.10	49.01	22.20	13.21	4.27
<b>Last Week</b> <i>04-03-2018</i>	33.29	66.71	49.43	21.57	13.21	1.47
<b>3 Months Ago</b> <i>01-09-2018</i>	27.08	72.92	36.93	10.75	0.39	0.00
<b>Start of Calendar Year</b> <i>01-02-2018</i>	33.37	66.63	33.56	5.94	0.11	0.00
<b>Start of Water Year</b> <i>09-26-2017</i>	70.54	29.46	4.17	0.04	0.00	0.00
<b>One Year Ago</b> <i>04-11-2017</i>	84.74	15.26	1.71	0.01	0.00	0.00

Intensity:

- D0 Abnormally Dry
- D1 Moderate Drought
- D2 Severe Drought
- D3 Extreme Drought
- D4 Exceptional Drought

*The Drought Monitor focuses on broad-scale conditions. Local conditions may vary. See accompanying text summary for forecast statements.*

Author:

David Miskus  
NOAA/NWS/NCEP/CPC



Source: National Drought Mitigation Center, a partnership with USDA, U.S. Department of Commerce/NOAA, <http://droughtmonitor.unl.edu>.

**2017 CENSUS OF AGRICULTURE**

YOUR VOICE. YOUR FUTURE. YOUR OPPORTUNITY.

United States Department of Agriculture  
National Agricultural Statistics Service

**Last Chance to Be Counted.  
Respond Today!**

**Respond Online.** [www.agcounts.usda.gov](http://www.agcounts.usda.gov)

*For assistance completing the census,  
call toll-free (888) 424-7828.*

**[www.agcensus.usda.gov](http://www.agcensus.usda.gov)**