



# Texas Crop Progress and Condition

Southern Plains Regional Field Office  
Post Office Box 70 Austin, Texas 78767  
(800) 626-3142 · FAX (855) 270-2725 · www.nass.usda.gov/tx

Issue: TX-CW0918

Weekly Summary for April 16 - 22

Released: April 23, 2018

Dry, windy weather was experienced across many areas of Texas last week. Precipitation in East Texas, the Upper Coast, areas of South Central Texas and the Blacklands was reported between 0.5 and 2 inches, with isolated areas receiving upwards of 3 inches. The U.S. Drought Monitor showed more area in the High and Low Plains in extreme drought to exceptional drought conditions, while areas in the Edwards Plateau reached extreme drought conditions. There were 6.3 days suitable for fieldwork.

**Small Grains:** Irrigation, where available, continued on wheat fields in the Northern High Plains. High winds and hot weather damaged wheat heads in areas of the Northern Low Plains. Winter wheat in the Southern Low Plains had begun to turn. Small grains in South Texas continued to dry out and mature.

**Row Crops:** Some cotton, sorghum and soybeans were planted in the Blacklands, but most producers were waiting for warmer temperatures to plant. High winds damaged emerged cotton in the Coastal Bend. Producers in the Lower Valley were irrigating cotton fields. Corn planting had begun in the Southern Low Plains. Corn had begun to tassel in South Texas. Some corn fields in North East Texas were damaged by feral hogs.

**Fruit, Vegetable and Specialty Crops:** Progress of warm season vegetables in North East Texas had slowed due to cold temperatures. Producers continued to harvest citrus, onions and sugarcane in the Lower Valley. Cabbage was harvested in South Texas and the Lower Valley. Spinach producers in South Texas reported that spinach harvest will continue into May. Early planted potatoes were being prepared for harvest in some areas.

**Livestock, Range and Pasture:** Producers have been able to maintain their livestock in good condition. Pasture and range condition declined in areas where dry, windy weather prevailed. Areas of the Northern Plains and the Trans-Pecos were in a wildfire watch.

## Crop Progress

Stage	Percent of Acreage			
	Current Week	Previous Week	Previous Year	5 Year Average
<b>Corn</b>				
Planted	65	60	67	59
Emerged	47	43	59	50
<b>Cotton</b>				
Planted	14	13	12	11
<b>Rice</b>				
Planted	74	70	69	75
Emerged	62	55	58	60
<b>Sorghum</b>				
Planted	78	64	64	57
<b>Soybeans</b>				
Planted	26	12	23	25
Emerged	6	N/A	10	4
<b>Winter Wheat</b>				
Headed	56	40	65	48
<b>Oats</b>				
Headed	74	66	81	62

N/A Not available.

### Crop Condition

Crop	Percent of Acreage					Index <sup>1</sup>	
	Excellent	Good	Fair	Poor	Very Poor	2018	2017
Corn	5	38	48	7	2	70	86
Rice	7	24	62	6	1	68	75
Wheat	1	13	22	31	33	35	68
Oats	1	27	43	18	11	56	64
Range and Pasture	6	33	36	17	8	--	--

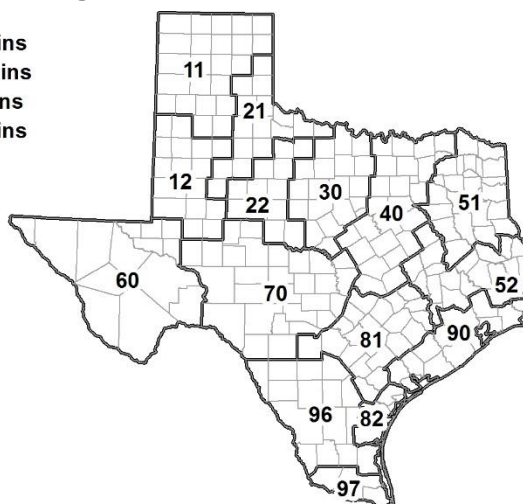
<sup>1</sup> The formula for the condition index is  $I = (5V + 25P + 60F + 90G + 110E)/100$  where I = crop condition index and V, P, F, G, E = percentage of crop rated very poor, poor, fair, good, excellent.

### Soil Moisture and Days Suitable by District

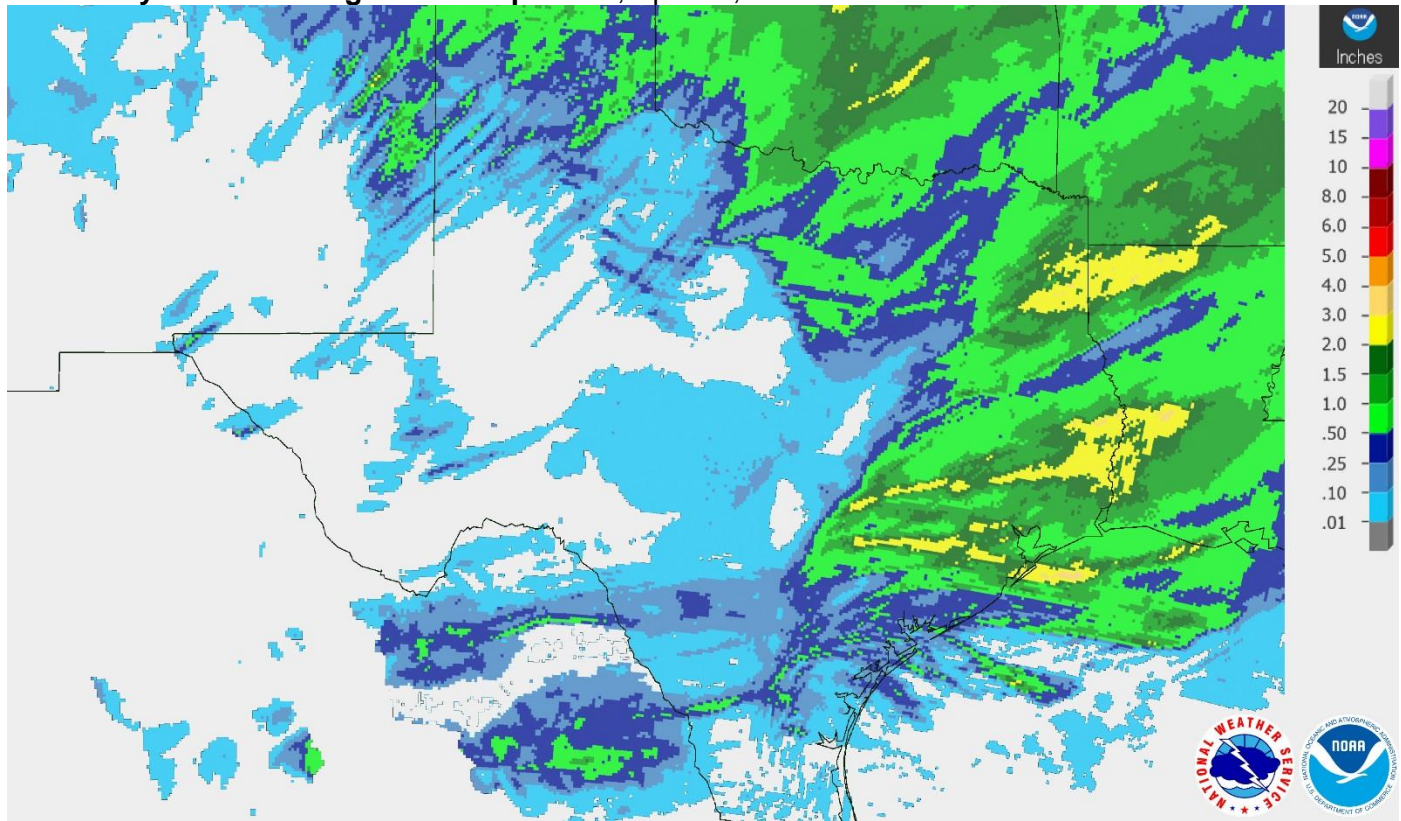
District	Topsoil Moisture Condition by District				Subsoil Moisture Condition by District				Days Suitable for Fieldwork
	Percentage of Acreage				Percentage of Acreage				
	Very Short	Short	Adequate	Surplus	Very Short	Short	Adequate	Surplus	
11	50	30	20	0	41	38	21	0	5.8
12	49	47	4	0	66	31	3	0	6.6
21	72	25	3	0	56	34	10	0	6.6
22	55	36	9	0	35	44	21	0	6.2
30	11	47	40	2	8	43	47	2	6.2
40	6	16	74	4	4	19	75	2	5.6
51	0	9	81	10	0	8	79	13	6.7
52	0	4	81	15	0	5	82	13	6.2
60	97	3	0	0	56	43	1	0	6.7
70	28	49	23	0	23	40	37	0	7.0
81	2	45	52	1	0	50	49	1	6.3
82	0	42	57	1	5	47	48	0	6.9
90	4	36	56	4	3	30	53	14	6.9
96	18	41	41	0	17	44	39	0	6.6
97	42	58	0	0	0	93	7	0	7.0
State	33	34	31	2	29	36	33	2	6.3

### Texas Agricultural Districts

- 11 Northern High Plains
- 12 Southern High Plains
- 21 Northern Low Plains
- 22 Southern Low Plains
- 30 Cross Timbers
- 40 Blacklands
- 51 North East
- 52 South East
- 60 Trans-Pecos
- 70 Edwards Plateau
- 81 South Central
- 82 Coastal Bend
- 90 Upper Coast
- 96 South
- 97 Lower Valley

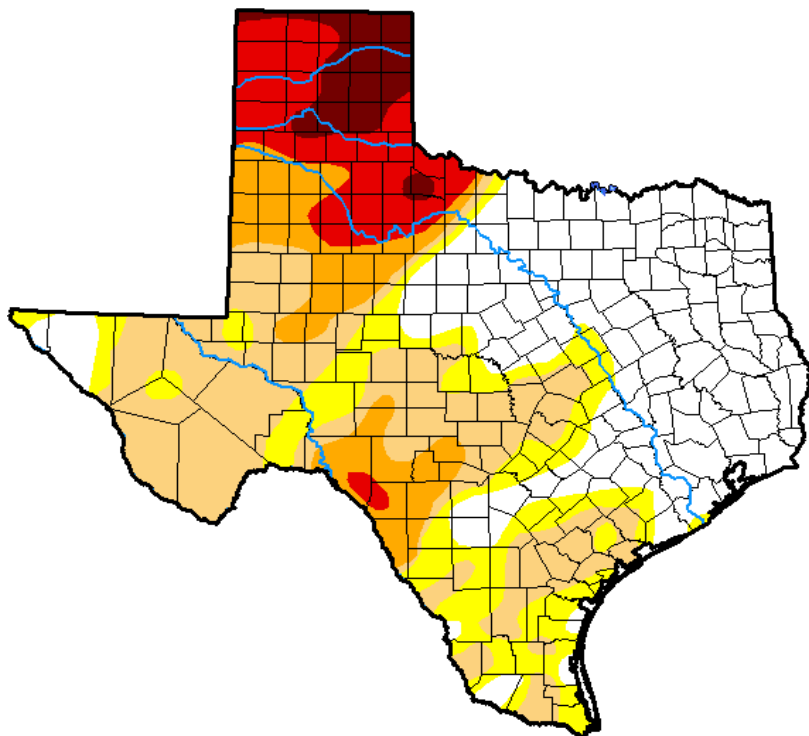


Seven Day Observed Regional Precipitation, April 22, 2018.



Source: National Weather Service, [www.nws.noaa.gov](http://www.nws.noaa.gov).

Drought Monitor, Valid April 17, 2018.



Drought Conditions (Percent Area)

	None	D0-D4	D1-D4	D2-D4	D3-D4	D4
<b>Current</b>	35.09	64.91	49.47	23.58	13.70	4.37
<b>Last Week</b> <i>04-10-2018</i>	34.90	65.10	49.01	22.20	13.21	4.27
<b>3 Months Ago</b> <i>01-16-2018</i>	20.81	79.19	41.81	16.21	2.01	0.00
<b>Start of Calendar Year</b> <i>01-02-2018</i>	33.37	66.63	33.56	5.94	0.11	0.00
<b>Start of Water Year</b> <i>09-26-2017</i>	70.54	29.46	4.17	0.04	0.00	0.00
<b>One Year Ago</b> <i>04-18-2017</i>	90.30	9.70	1.54	0.00	0.00	0.00

Intensity:

- D0 Abnormally Dry
- D1 Moderate Drought
- D2 Severe Drought
- D3 Extreme Drought
- D4 Exceptional Drought

*The Drought Monitor focuses on broad-scale conditions. Local conditions may vary. See accompanying text summary for forecast statements.*

Author:

Brad Rippey  
U.S. Department of Agriculture



Source: National Drought Mitigation Center, a partnership with USDA, U.S. Department of Commerce/NOAA, <http://droughtmonitor.unl.edu>.

**2017 CENSUS OF AGRICULTURE**

YOUR VOICE. YOUR FUTURE. YOUR OPPORTUNITY.



United States Department of Agriculture  
National Agricultural Statistics Service



**Last Chance to Be Counted.  
Respond Today!**

**Respond Online.** [www.agcounts.usda.gov](http://www.agcounts.usda.gov)

*For assistance completing the census,  
call toll-free (888) 424-7828.*

**[www.agcensus.usda.gov](http://www.agcensus.usda.gov)**