



Texas Crop Progress and Condition

Southern Plains Regional Field Office
Post Office Box 70 Austin, Texas 78767
(800) 626-3142 · FAX (855) 270-2725 · www.nass.usda.gov/tx

Issue: TX-CW1018

Weekly Summary for April 23 - 29

Released: April 30, 2018

Hot, dry and windy conditions prevailed across most of the state. Precipitation in the Low Plains, the Cross Timbers, the Trans-Pecos, the Edwards Plateau, South Texas and South Central Texas ranged from trace amounts to 1.5 inches, with isolated areas getting upwards of 2.5 inches of rain. However soil moisture continued to be depleted due to high winds and warm temperature. There were 6.2 days suitable for fieldwork.

Small Grains: Small grains have not shown much freeze damage from the freeze experienced two weeks ago. Winter wheat in the Northern High Plains started to head. Some producers in the Low Plains and the Cross Timbers were cutting wheat for hay because of the poor crop conditions. Wheat and oats harvest started in areas of South Texas.

Row Crops: Producers in the Northern Low Plains were spraying fields for weeds in preparation for cotton planting, while cotton planting continued in the Blacklands and the Trans-Pecos. Pima cotton planting was winding down in the Trans-Pecos. Some farmers in the Upper Coast had to replant cotton damaged by cool weather and windy conditions. Corn in South Texas and the Coastal Bend was tasseling. Corn and sorghum in areas of the Blacklands were showing signs of wind burn. Sorghum development in the Trans-Pecos was slower than usual due to cool nighttime temperatures.

Fruit, Vegetable and Specialty Crops: Harvest of sugarcane and citrus wound down in the Lower Valley, while harvest of vegetables continued. Cabbage and spinach harvest was active in South Texas, while other vegetables were emerging. Pecans in the Trans-Pecos were blooming and producers were applying the second irrigation. Pecan nut casebearer activity was reported in South Central Texas.

Livestock, Range and Pasture: Livestock conditions were mostly rated good to fair. Pasture and range condition remained mostly fair to good. Fire danger remains high in areas of the Trans-Pecos. Wild hogs were still active in East Texas.

Crop Progress

Stage	Percent of Acreage			
	Current Week	Previous Week	Previous Year	5 Year Average
Corn				
Planted	70	65	71	66
Emerged	50	47	63	56
Silked	3	N/A	0	0
Cotton				
Planted	15	14	13	13
Rice				
Planted	77	74	75	79
Emerged	69	62	68	71
Sorghum				
Planted	81	78	71	63
Headed	5		6	1
Soybeans				
Planted	42	26	42	38
Emerged	18	6	23	15
Winter Wheat				
Headed	70	56	76	62
Harvested	1	N/A	0	0
Oats				
Headed	79	74	94	78

N/A Not available.

Crop Condition

Crop	Percent of Acreage					Index ¹	
	Excellent	Good	Fair	Poor	Very Poor	2018	2017
Corn	2	26	69	2	1	6	84
Rice	6	23	65	5	1	8	80
Wheat	2	14	23	30	31	6	69
Oats	2	31	39	16	12	8	63
Range and Pasture	5	31	37	19	8	3	--
						8	
						5	
						8	
						--	

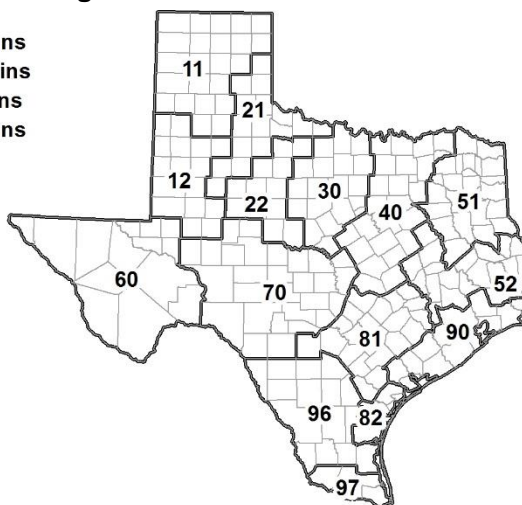
¹ The formula for the condition index is $I = (5V + 25P + 60F + 90G + 110E)/100$ where I = crop condition index and V, P, F, G, E = percentage of crop rated very poor, poor, fair, good, excellent.

Soil Moisture and Days Suitable by District

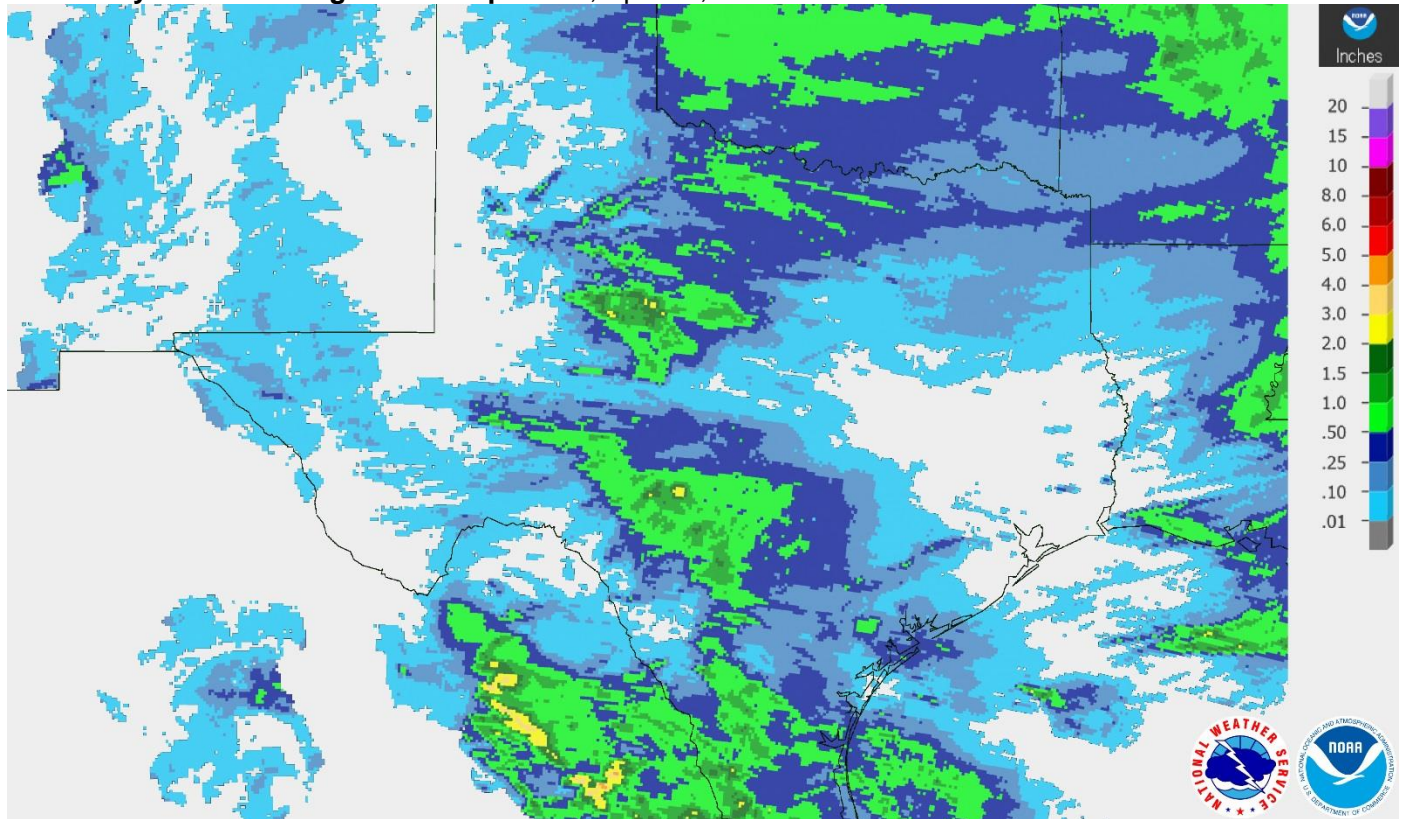
District	Topsoil Moisture Condition by District				Subsoil Moisture Condition by District				Days Suitable for Fieldwork
	Percentage of Acreage				Percentage of Acreage				
	Very Short	Short	Adequate	Surplus	Very Short	Short	Adequate	Surplus	
11	50	27	23	0	33	40	27	0	5.1
12	37	57	6	0	49	41	10	0	6.9
21	67	26	7	0	51	37	12	0	6.7
22	41	38	21	0	37	45	18	0	5.9
30	10	38	52	0	8	36	55	1	6.1
40	11	28	59	2	9	31	58	2	6.3
51	0	13	78	9	0	11	76	13	6.8
52	2	18	70	10	0	17	75	8	6.5
60	78	1	21	0	27	51	22	0	6.8
70	25	51	24	0	24	45	31	0	6.7
81	0	41	59	0	0	46	54	0	6.1
82	0	36	64	0	7	37	56	0	7.0
90	7	47	45	1	3	31	57	9	6.1
96	28	44	28	0	25	43	32	0	6.7
97	56	44	0	0	26	68	6	0	7.0
State	31	36	32	1	26	38	34	2	6.2

Texas Agricultural Districts

- 11 Northern High Plains
- 12 Southern High Plains
- 21 Northern Low Plains
- 22 Southern Low Plains
- 30 Cross Timbers
- 40 Blacklands
- 51 North East
- 52 South East
- 60 Trans-Pecos
- 70 Edwards Plateau
- 81 South Central
- 82 Coastal Bend
- 90 Upper Coast
- 96 South
- 97 Lower Valley

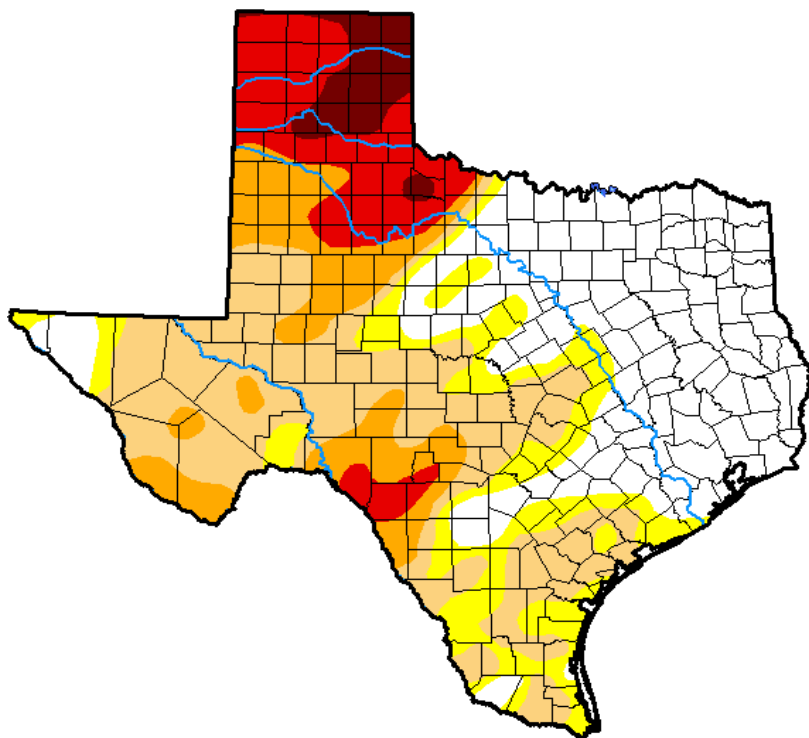


Seven Day Observed Regional Precipitation, April 29, 2018.



Source: National Weather Service, www.nws.noaa.gov.

Drought Monitor, Valid April 24, 2018.



Drought Conditions (Percent Area)

	None	D0-D4	D1-D4	D2-D4	D3-D4	D4
Current	33.36	66.64	53.23	26.26	14.54	3.88
Last Week <i>04-17-2018</i>	35.09	64.91	49.47	23.58	13.70	4.37
3 Months Ago <i>01-23-2018</i>	14.50	85.50	49.49	17.14	4.25	0.00
Start of Calendar Year <i>01-02-2018</i>	33.37	66.63	33.56	5.94	0.11	0.00
Start of Water Year <i>09-26-2017</i>	70.54	29.46	4.17	0.04	0.00	0.00
One Year Ago <i>04-25-2017</i>	90.58	9.42	1.34	0.00	0.00	0.00

Intensity:

- D0 Abnormally Dry
- D1 Moderate Drought
- D2 Severe Drought
- D3 Extreme Drought
- D4 Exceptional Drought

The Drought Monitor focuses on broad-scale conditions. Local conditions may vary. See accompanying text summary for forecast statements.

Author:

Brad Rippey
U.S. Department of Agriculture



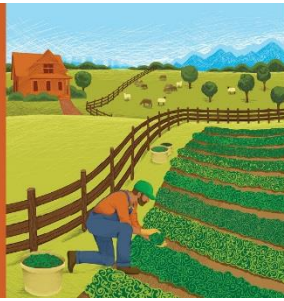
Source: National Drought Mitigation Center, a partnership with USDA, U.S. Department of Commerce/NOAA, <http://droughtmonitor.unl.edu>.

2017 CENSUS OF AGRICULTURE

YOUR VOICE. YOUR FUTURE. YOUR OPPORTUNITY.



United States Department of Agriculture
National Agricultural Statistics Service



**There's Still Time to Be Counted.
Respond Today!**

Respond Online. www.agcounts.usda.gov

*For assistance completing the census,
call toll-free (888) 424-7828.*

www.agcensus.usda.gov