



# Texas Crop Progress and Condition

Southern Plains Regional Field Office  
Post Office Box 70 Austin, Texas 78767  
(800) 626-3142 · FAX (855) 270-2725 · [www.nass.usda.gov/tx](http://www.nass.usda.gov/tx)

Issue: TX-CW1118

Weekly Summary for April 30-May 6

Released: May 7, 2018

Average temperatures increased from the previous week in most parts of the state. Storms caused some wind and hail damage, but also brought much needed moisture. The Trans-Pecos and the High Plains got little to no precipitation, but the rest of the state received between 0.2 and 3 inches, with isolated areas reporting upwards of 4.5 inches. There were 6.1 days suitable for fieldwork.

**Small Grains:** Winter wheat in the Plains remained in poor condition. Producers in the Cross Timbers and areas of the Blacklands were cutting and baling small grains in some areas. Wheat was turning in the Blacklands. Rust has been seen in some wheat in South Central Texas. Wheat harvest continued in areas of South Texas.

**Row Crops:** Cotton planting started in areas of the High Plains and the Blacklands. Pima Cotton has emerged in the Trans-Pecos. Replanting of cotton continued in the Upper Coast. Areas of the Upper Coast and the Lower Valley were in need of moisture and heat units in order to promote cotton development. Corn in South Texas had reached the silking stage. Thanks to the recent rains, corn and sorghum conditions improved in the Blacklands and the Upper Coast. Sorghum planting continued in the Edwards Plateau.

**Fruit, Vegetable and Specialty Crops:** Rabbits and deer were damaging the watermelons in the Southern High Plains. Pecans in the Cross Timbers began nut development. Melon, onion and cabbage harvests were active in the Lower Valley, while citrus and sugarcane harvest neared completion.

**Livestock, Range and Pasture:** Cattle producers in the Northern Low Plains were having issues with lice and ticks. Cattle and livestock conditions in most of the state were good to fair, but some producers reported cattle condition as fair to poor in areas of the Plains, the Trans Pecos and South Texas. Some of these producers had begun culling herds. Pasture and range condition remained unchanged from the previous week.

 <p>2017 CENSUS OF AGRICULTURE YOUR VOICE. YOUR FUTURE. YOUR OPPORTUNITY.</p>  <p>United States Department of Agriculture National Agricultural Statistics Service</p>		<p><b>Last Chance to Be Counted. Respond Today!</b></p> <p>Respond Online. <a href="http://www.agcounts.usda.gov">www.agcounts.usda.gov</a></p> <p>For assistance completing the census, call toll-free (888) 424-7828.</p> <p><a href="http://www.agcensus.usda.gov">www.agcensus.usda.gov</a></p>
--	---	---

### Crop Progress

Stage	Percent of Acreage			
	Current Week	Previous Week	Previous Year	5 Year Average
<b>Corn</b>				
Planted	81	70	76	72
Emerged	55	50	67	61
Silked	11	3	7	3
<b>Cotton</b>				
Planted	19	15	16	16
Squaring	1	N/A	3	2
<b>Peanuts</b>				
Planted	11	0	13	11
<b>Rice</b>				
Planted	84	77	81	84
Emerged	77	69	75	77
Headed			4	2
<b>Sorghum</b>				
Planted	84	81	75	68
Headed	7	5	7	3
<b>Soybeans</b>				
Planted	52	42	60	54
Emerged	30	18	39	30
<b>Winter Wheat</b>				
Headed	73	70	82	73
Harvested	5	1	0	0
<b>Oats</b>				
Headed	90	79	98	89
Harvested	2	0	0	0

N/A Not available.

### Crop Condition

Crop	Percent of Acreage					Index <sup>1</sup>	
	Excellent	Good	Fair	Poor	Very Poor	2018	2017
Corn	2	33	62	2	1	70	84
Rice	10	34	53	3	0	74	80
Wheat	2	14	24	31	29	38	69
Oats	4	27	39	19	11	57	63
Range and Pasture	4	33	36	19	8	--	--

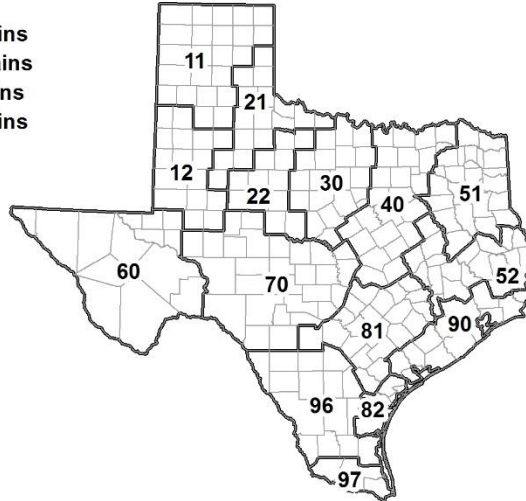
<sup>1</sup> The formula for the condition index is  $I = (5V + 25P + 60F + 90G + 110E)/100$  where I = crop condition index and V, P, F, G, E = percentage of crop rated very poor, poor, fair, good, excellent.

### Soil Moisture and Days Suitable by District

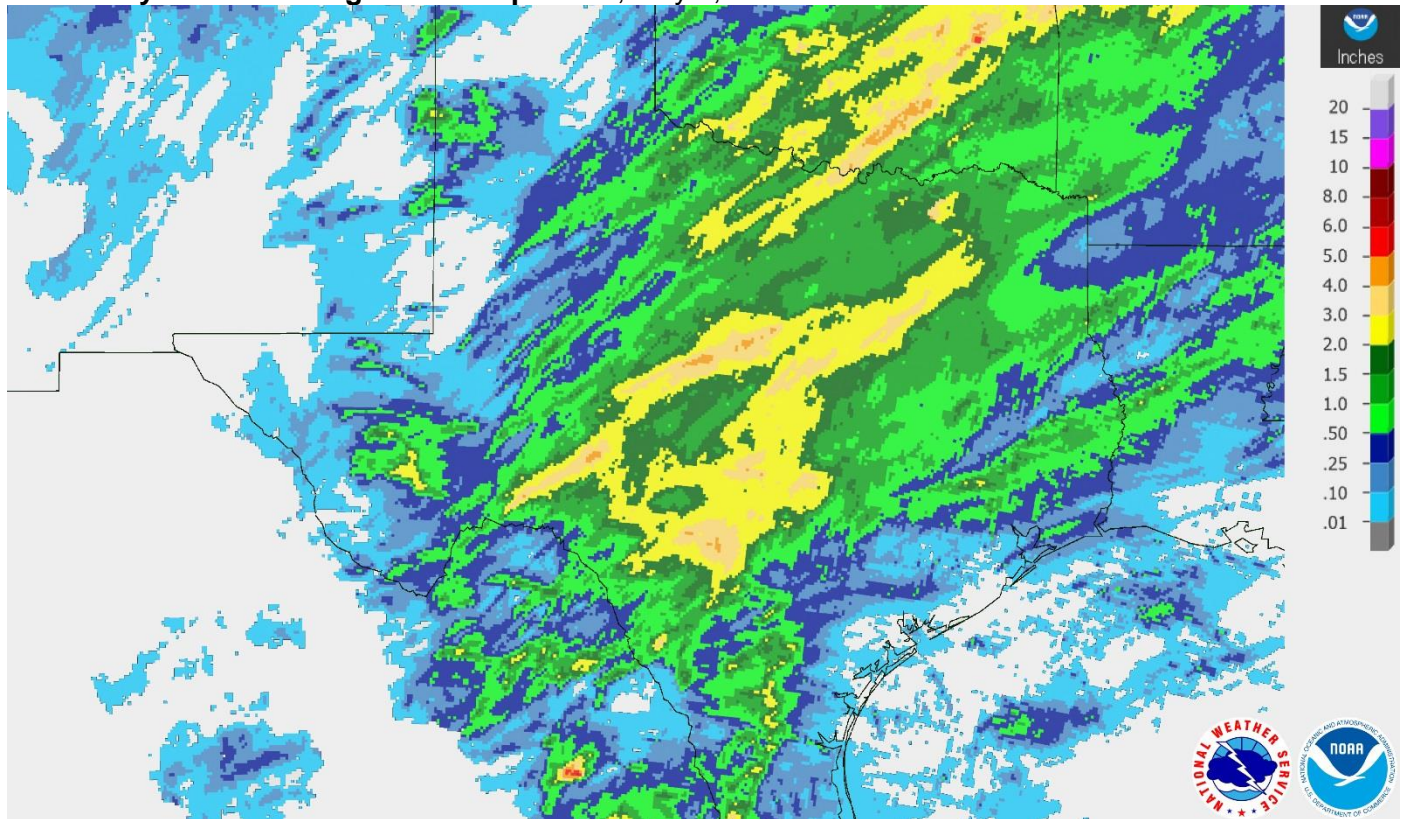
District	Topsoil Moisture Condition by District				Subsoil Moisture Condition by District				Days Suitable for Fieldwork
	Percentage of Acreage				Percentage of Acreage				
	Very Short	Short	Adequate	Surplus	Very Short	Short	Adequate	Surplus	
11	51	27	22	0	27	50	23	0	6.7
12	52	47	1	0	65	32	3	0	6.9
21	59	26	15	0	49	37	14	0	6.1
22	30	29	39	2	31	42	27	0	5.4
30	3	16	68	13	7	28	62	3	5.0
40	3	13	61	23	4	18	64	14	4.5
51	0	11	68	21	0	12	72	16	5.8
52	2	28	60	10	1	26	63	10	6.1
60	59	1	40	0	53	7	40	0	7.0
70	16	19	61	4	19	24	55	2	5.5
81	0	36	60	4	0	35	62	3	6.6
82	0	70	30	0	0	70	30	0	7.0
90	14	32	53	1	7	24	67	2	5.6
96	5	44	51	0	7	43	50	0	6.4
97	74	26	0	0	26	67	7	0	7.0
State	31	29	35	5	26	35	36	3	6.1

### Texas Agricultural Districts

- 11 Northern High Plains
- 12 Southern High Plains
- 21 Northern Low Plains
- 22 Southern Low Plains
- 30 Cross Timbers
- 40 Blacklands
- 51 North East
- 52 South East
- 60 Trans-Pecos
- 70 Edwards Plateau
- 81 South Central
- 82 Coastal Bend
- 90 Upper Coast
- 96 South
- 97 Lower Valley

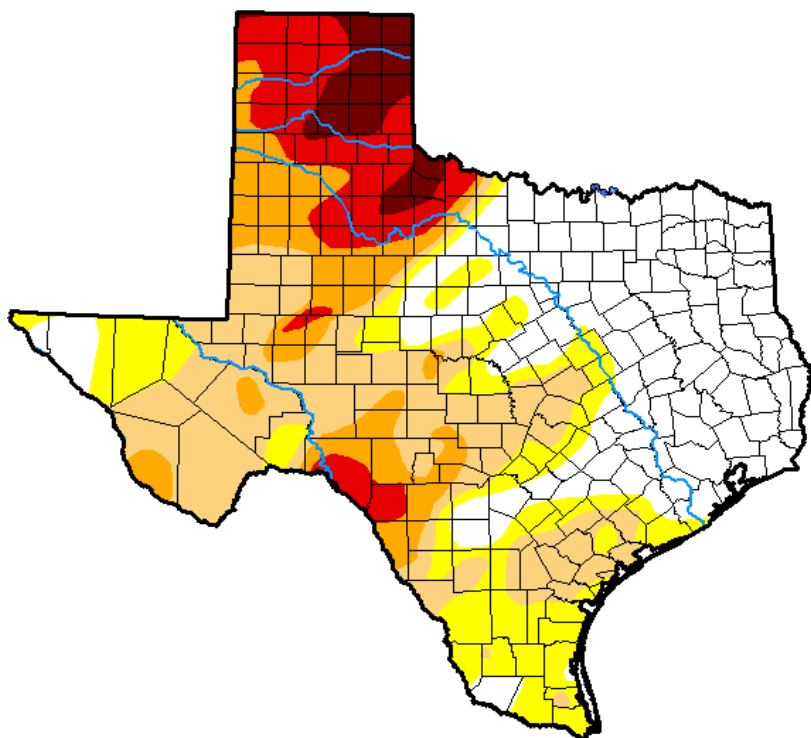


## Seven Day Observed Regional Precipitation, May 6, 2018.



Source: National Weather Service, [www.nws.noaa.gov](http://www.nws.noaa.gov).

## Drought Monitor, Valid May 1, 2018.



*Drought Conditions (Percent Area)*

	None	D0-D4	D1-D4	D2-D4	D3-D4	D4
<b>Current</b>	33.60	66.40	49.36	25.50	13.94	4.31
<b>Last Week</b> <i>04-24-2018</i>	33.36	66.64	53.23	26.26	14.54	3.88
<b>3 Months Ago</b> <i>01-30-2018</i>	13.27	86.73	56.47	21.98	7.30	0.00
<b>Start of Calendar Year</b> <i>01-02-2018</i>	33.37	66.63	33.56	5.94	0.11	0.00
<b>Start of Water Year</b> <i>09-26-2017</i>	70.54	29.46	4.17	0.04	0.00	0.00
<b>One Year Ago</b> <i>05-02-2017</i>	91.38	8.62	1.44	0.00	0.00	0.00

Intensity:

- D0 Abnormally Dry
- D1 Moderate Drought
- D2 Severe Drought
- D3 Extreme Drought
- D4 Exceptional Drought

*The Drought Monitor focuses on broad-scale conditions. Local conditions may vary. See accompanying text summary for forecast statements.*

Author:

David Simeral  
Western Regional Climate Center



Source: National Drought Mitigation Center, a partnership with USDA, U.S. Department of Commerce/NOAA, <http://droughtmonitor.unl.edu>.

## Texas Crop Progress and Condition (7 May 2018)

USDA, National Agricultural Statistics Service, Southern Plains Regional Field Office