



United States Department of Agriculture
National Agricultural Statistics Service



Texas Crop Progress and Condition

Southern Plains Regional Field Office
Post Office Box 70 Austin, Texas 78767
(800) 626-3142 · FAX (855) 270-2725 · www.nass.usda.gov/tx

Issue: TX-CW1218

Weekly Summary for May 7-May13

Released: May 14, 2018

Weather was mostly dry and warm across the state. Most of the state had no measurable rainfall, but the Trans-Pecos and the Low Plains received from trace amounts up to 1 inch of rain, with isolated areas getting upwards of 2 inches. There were 6.7 days suitable for fieldwork.

Small Grains: Winter wheat in many areas of the High Plains and the Northern Low Plains was being grazed, baled or used as a cover crop for cotton. Recent rainfall improved wheat condition in the Southern Low Plains. Wheat was turning in the Cross Timbers, the Blacklands and areas of the Southern Low Plains. Producers in the southern and central parts of the state expected to start harvesting small grains later this week.

Row Crops: Cotton planting was ongoing in the High Plains. Some farmers were planting cotton in the Low Plains, but most expected to start planting in the upcoming weeks. Producers in the Edwards Plateau were preparing to plant cotton. Meanwhile, cotton was irrigated in South Texas and the Lower Valley. Corn planting was active in the Northern High Plains. Producers in the Upper Coast, South Texas and the Lower Valley were irrigating corn fields. Sorghum was emerging in the Edwards Plateau and was heading in South Texas.

Fruit, Vegetable and Specialty Crops: Pecan orchards in South Central Texas were treated for pecan nut casebearer. Vegetable producers in South Texas resumed cabbage harvest, completed spinach harvest and began harvesting onions. Vegetable harvest continued in the Lower Valley.

Livestock, Range and Pasture: Cattle remained in good to fair condition. Pasture supplementation continued in the Northern Low Plains, the Edwards Plateau, South Texas and the Lower Valley. Pasture and range condition remained fair to good. Several wildfires were spotted in the Southern High Plains and the Northern Low Plains.

Crop Progress

Stage	Percent of Acreage			
	Current Week	Previous Week	Previous Year	5 Year Average
Corn				
Planted	82	81	80	78
Emerged	70	55	71	67
Silked	18	11	14	9
Cotton				
Planted	28	19	23	23
Squaring	2	1	6	3
Peanuts				
Planted	35	11	32	24
Rice				
Planted	90	84	84	89
Emerged	82	77	79	82
Headed			8	5
Sorghum				
Planted	85	84	77	73
Headed	15	7	14	10
Soybeans				
Planted	64	52	69	62
Sunflowers				
Planted	25	16	32	36
Winter Wheat				
Headed	81	73	90	83
Harvested	7	5	6	2
Oats				
Headed	95	90	100	95
Harvested	10	2	3	2

Crop Condition

Crop	Percent of Acreage					Index ¹	
	Excellent	Good	Fair	Poor	Very Poor	2018	2017
Corn	3	32	61	4	0	70	83
Rice	3	35	61	1	0	72	86
Wheat	2	14	25	31	28	39	67
Oats	4	25	42	20	9	58	61
Range and Pasture	5	27	40	19	9	--	--

¹ The formula for the condition index is $I = (5V + 25P + 60F + 90G + 110E)/100$ where I = crop condition index and V, P, F, G, E = percentage of crop rated very poor, poor, fair, good, excellent.



2017 CENSUS OF AGRICULTURE
YOUR VOICE. YOUR FUTURE. YOUR OPPORTUNITY.

USDA
NATIONAL AGRICULTURAL STATISTICS SERVICE



**Last Chance to Be Counted.
Respond Today!**

Respond Online. www.agcounts.usda.gov

For assistance completing the census,
call toll-free (888) 424-7828.

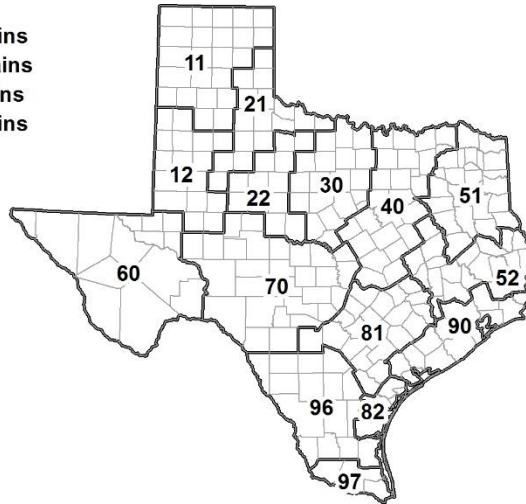
www.agcensus.usda.gov

Soil Moisture and Days Suitable by District

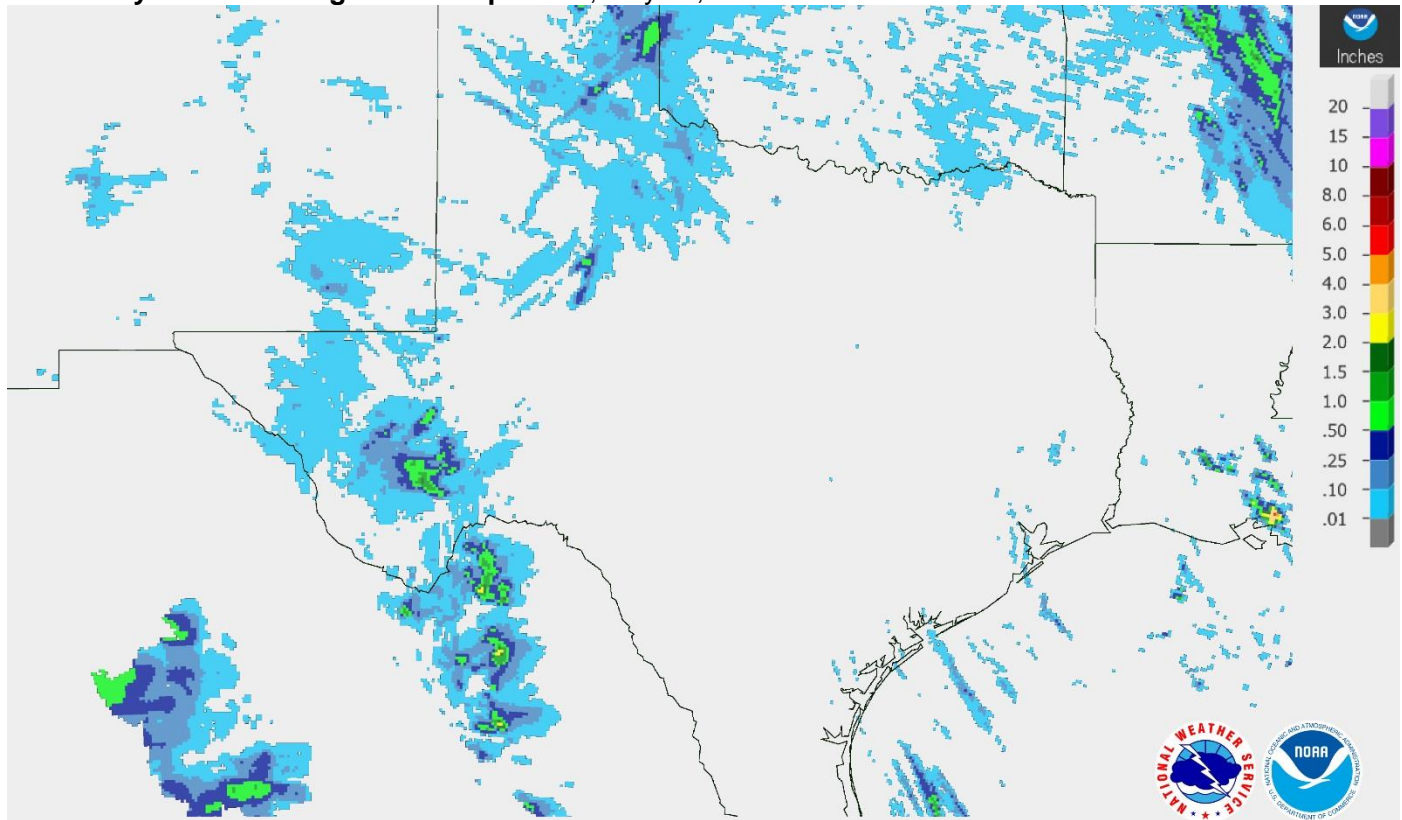
District	Topsoil Moisture Condition by District				Subsoil Moisture Condition by District				Days Suitable for Fieldwork
	Percentage of Acreage				Percentage of Acreage				
	Very Short	Short	Adequate	Surplus	Very Short	Short	Adequate	Surplus	
11	59	28	13	0	18	57	25	0	7.0
12	79	21	0	0	75	23	2	0	6.9
21	55	24	13	8	47	34	14	5	6.9
22	39	28	33	0	31	48	21	0	6.5
30	3	29	61	7	4	34	61	1	5.9
40	6	28	64	2	6	27	66	1	6.4
51	4	22	68	6	0	21	73	6	6.9
52	8	36	50	6	7	36	51	6	6.7
60	74	0	26	0	45	29	26	0	6.8
70	21	34	44	1	22	34	44	0	6.8
81	1	68	31	0	0	65	35	0	6.2
82	0	100	0	0	0	80	20	0	7.0
90	16	61	19	4	5	31	59	5	6.7
96	7	76	17	0	9	60	31	0	6.6
97	73	25	2	0	26	66	8	0	7.0
State	38	34	26	2	26	41	32	1	6.7

Texas Agricultural Districts

- 11 Northern High Plains
- 12 Southern High Plains
- 21 Northern Low Plains
- 22 Southern Low Plains
- 30 Cross Timbers
- 40 Blacklands
- 51 North East
- 52 South East
- 60 Trans-Pecos
- 70 Edwards Plateau
- 81 South Central
- 82 Coastal Bend
- 90 Upper Coast
- 96 South
- 97 Lower Valley

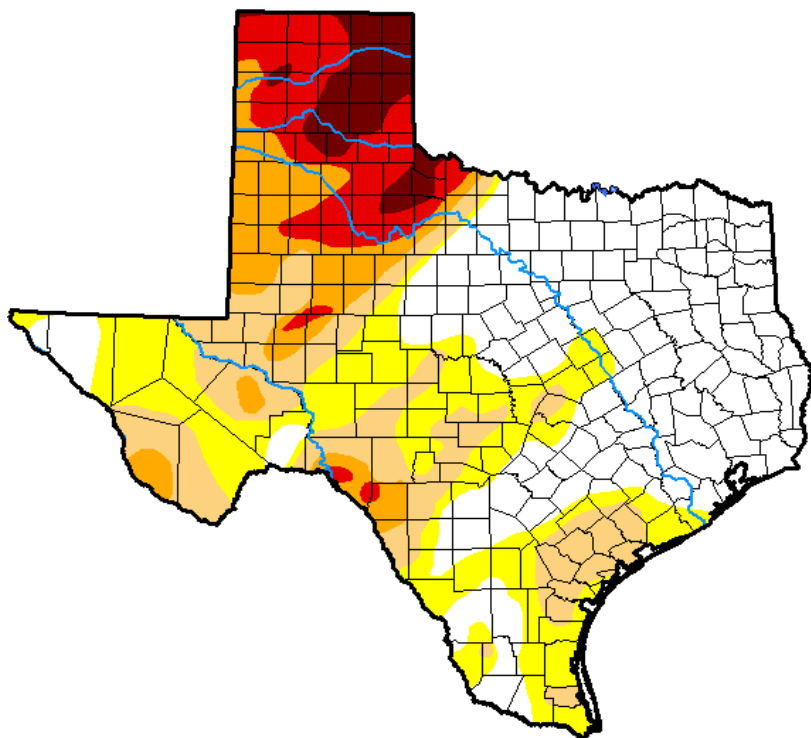


Seven Day Observed Regional Precipitation, May 13, 2018.



Source: National Weather Service, www.nws.noaa.gov.

Drought Monitor, Valid May 8, 2018.



Drought Conditions (Percent Area)

	None	D0-D4	D1-D4	D2-D4	D3-D4	D4
Current	39.78	60.22	38.80	22.30	12.97	4.61
Last Week <i>05-01-2018</i>	33.60	66.40	49.36	25.50	13.94	4.31
3 Months Ago <i>02-08-2018</i>	9.76	90.24	64.88	29.56	11.79	0.00
Start of Calendar Year <i>01-02-2018</i>	33.37	66.63	33.56	5.94	0.11	0.00
Start of Water Year <i>09-26-2017</i>	70.54	29.46	4.17	0.04	0.00	0.00
One Year Ago <i>05-09-2017</i>	78.86	21.14	2.33	0.00	0.00	0.00

Intensity:

- D0 Abnormally Dry
- D1 Moderate Drought
- D2 Severe Drought
- D3 Extreme Drought
- D4 Exceptional Drought

The Drought Monitor focuses on broad-scale conditions. Local conditions may vary. See accompanying text summary for forecast statements.

Author:

David Simeral
Western Regional Climate Center



Source: National Drought Mitigation Center, a partnership with USDA, U.S. Department of Commerce/NOAA, <http://droughtmonitor.unl.edu>.

Texas Crop Progress and Condition (14 May 2018)

USDA, National Agricultural Statistics Service, Southern Plains Regional Field Office